



Queensborough Terrace, London W2

---



# Queensborough Terrace, London, W2

A second floor flat in an attractive period building with Hyde Park at the end of the road. The flat provides two bedrooms, an impressive bathroom and stunning kitchen with an open plan reception and dining area. The flat benefits from good volume and period architecture alongside tasteful modern features.

Queensborough Terrace is centrally located with excellent transport links such as Queensway (Central line) and Bayswater (District, Circle) stations close by.

Oxford Street and the West End are both easily accessible offering some of the best shops, restaurants and theatre London has to offer.



## Asking price

£925,000

## Tenure

Leasehold:  
approximately  
994 years

## Local authority

City of  
Westminster

A beautifully refurbished and interior designed flat for sale in Bayswater.

I would be delighted to tell you more

Tim Perks | +44 20 7871 5065

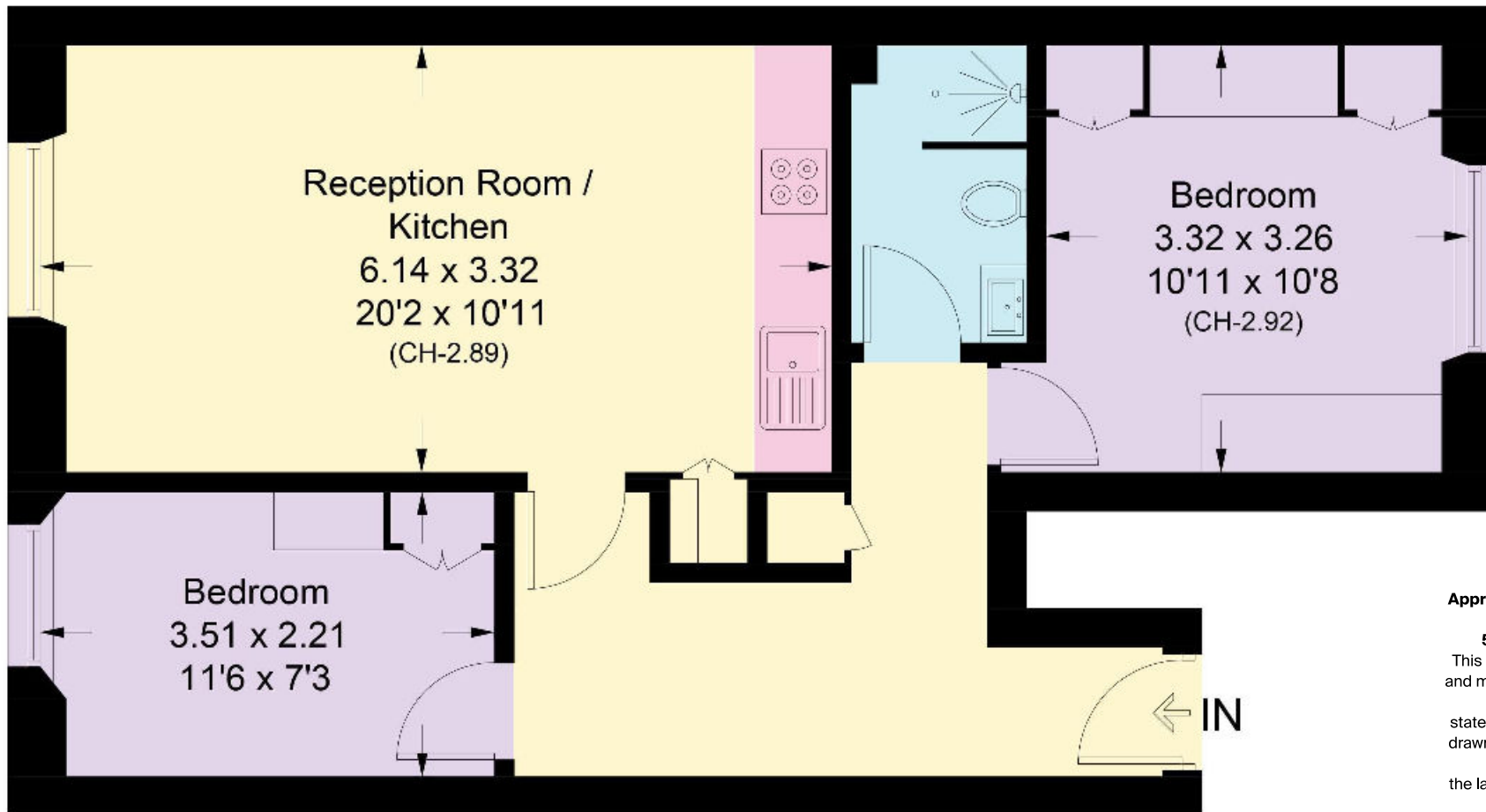
tim.perks@knightfrank.com | [knightfrank.co.uk](https://www.knightfrank.co.uk)





Queensborough Terrace is perfectly positioned for the open spaces of Hyde Park.





**Approximate Gross Internal Floor Area**  
**53,6 sq m/577 sq ft**  
 This plan is for guidance only and must not be relied upon as a statement of fact. Attention is drawn to the Important Notice on the last page of the text of the Particulars

**Knight Frank**  
 Hyde Park  
 1 Craven Terrace  
 London  
 W2 3QD  
[knightfrank.co.uk](http://knightfrank.co.uk)

I would be delighted to tell you more  
**Tim Perks**  
 +44 20 7871 5065  
[tim.perks@knightfrank.com](mailto:tim.perks@knightfrank.com)



Fixtures and fittings: A list of the fitted carpets, curtains, light fittings and other items fixed to the property which are included in the sale (or may be available by separate negotiation) will be provided by the Seller's Solicitors.  
 Important Notice: 1. Particulars: These particulars are not an offer or contract, nor part of one. You should not rely on statements by Knight Frank LLP in the particulars or by word of mouth or in writing ("information") as being factually accurate about the property, its condition or its value. Neither Knight Frank LLP nor any joint agent has any authority to make any representations about the property, and accordingly any information given is entirely without responsibility on the part of the agents, seller(s) or lessor(s). 2. Photos, Videos etc: The photographs, property videos and virtual viewings etc. show only certain parts of the property as they appeared at the time they were taken. Areas, measurements and distances given are approximate only. 3. Regulations etc: Any reference to alterations to, or use of, any part of the property does not mean that any necessary planning, building regulations or other consent has been obtained. A buyer or lessee must find out by inspection or in other ways that these matters have been properly dealt with and that all information is correct. 4. VAT: The VAT position relating to the property may change without notice. 5. To find out how we process Personal Data, please refer to our Group Privacy Statement and other notices at <https://www.knightfrank.com/legals/privacy-statement>.  
 Particulars dated xxxxxxxx 2022. Photographs and videos dated xxxxxxxx 2022.  
 Knight Frank is the trading name of Knight Frank LLP. Knight Frank LLP is a limited liability partnership registered in England and Wales with registered number OC305934. Our registered office is at 55 Baker Street, London W1U 8AN where you may look at a list of members' names. If we use the term 'partner' when referring to one of our representatives, that person will either be a member, employee, worker or consultant of Knight Frank LLP and not a partner in a partnership. If you do not want us to contact you further about our services then please contact us by either calling 020 3544 0692, email to [marketing.help@knightfrank.com](mailto:marketing.help@knightfrank.com) or post to our UK Residential Marketing Manager at our registered office (above) providing your name and address.