



Norfolk Crescent
Hyde park
W2







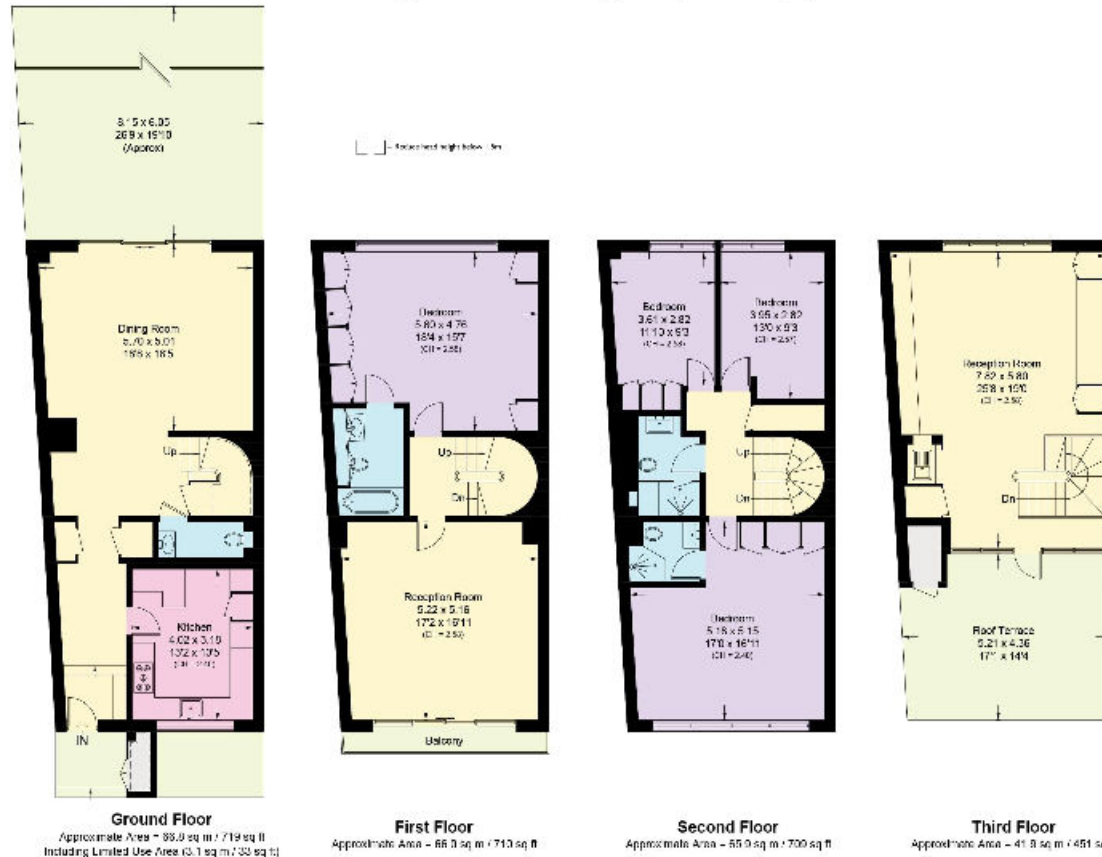
This beautifully interior designed and welcoming house is presented in immaculate condition and provides well proportioned rooms throughout. The ground floor comprises a modern kitchen with high end appliances and a spacious dining room with bifolding doors out to a private garden at the rear. The main reception on the first floor enjoys views over the trees and gardens of Norfolk Crescent and there is a large principle bedroom with built in storage and en suite bathroom. The second floor consists of three good sized bedrooms and two additional bathrooms. Another reception area on the top floor offers further space to relax and enjoy access to a west-facing roof terrace.



Norfolk Crescent is located on the Hyde Park Estate, equidistant between Lancaster Gate and Marble Arch (Central line) underground stations. The open spaces of Hyde Park and the pretty shops and cafes of Connaught Village are located nearby.

Norfolk Crescent, W2

Approximate Area = 240.6 sq m / 2589 sq ft
 External Cupboards = 2.2 sq m / 24 sq ft
 Total = 242.8 sq m / 2613 sq ft
 Including Limited Use Area (3.1 sq m / 33 sq ft)



Surveyed and drawn in accordance with the International property measurements standards (IPMS 2: Residential) Not drawn to scale unless stated.
 Whilst every care is taken in the preparation of this plan, please check all dimensions, shapes and compass bearings before making any decisions reliant upon them.

Knight Frank
 Hyde Park
 1 Craven Terrace
 London
 W2 3QD

[knightfrank.co.uk](https://www.knightfrank.co.uk)

We would be delighted to tell you more.

020 7871 5060
hydepark@knightfrank.com



Your partners in property for 125 years

Fixtures and fittings: A list of the fitted carpets, curtains, light fittings and other items fixed to the property which are included in the sale (or may be available by separate negotiation) will be provided by the Seller's Solicitors.

Important Notice: 1. Particulars: These particulars are not an offer or contract, nor part of one. You should not rely on statements by Knight Frank LLP in the particulars or by word of mouth or in writing ("information") as being factually accurate about the property, its condition or its value. Neither Knight Frank LLP nor any joint agent has any authority to make any representations about the property, and accordingly any information given is entirely without responsibility on the part of the agents, seller(s) or lessor(s). 2. Photos, Videos etc: The photographs, property videos and virtual viewings etc. show only certain parts of the property as they appeared at the time they were taken. Areas, measurements and distances given are approximate only. 3. Regulations etc: Any reference to alterations to, or use of, any part of the property does not mean that any necessary planning, building regulations or other consent has been obtained. A buyer or lessee must find out by inspection or in other ways that these matters have been properly dealt with and that all information is correct. 4. VAT: The VAT position relating to the property may change without notice. 5. To find out how we process Personal Data, please refer to our Group Privacy Statement and other notices at <https://www.knightfrank.com/legal/privacy-statement>.

Particulars dated November 2021. Photographs and videos dated November 2021.

Knight Frank is the trading name of Knight Frank LLP. Knight Frank LLP is a limited liability partnership registered in England and Wales with registered number OC305934. Our registered office is at 55 Baker Street, London W1U 8AN where you may look at a list of members' names. If we use the term 'partner' when referring to one of our representatives, that person will either be a member, employee, worker or consultant of Knight Frank LLP and not a partner in a partnership. If you do not want us to contact you further about our services then please contact us by either calling 020 3544 0692, email to marketing.help@knightfrank.com or post to our UK Residential Marketing Manager at our registered office (above) providing your name and address.