



Cleveland Square  
Bayswater  
W2









Originally two apartments joined together in this beautiful Grade II Listed stucco-fronted building, this large and spacious penthouse comprises four double bedrooms, four bathrooms, study and an abundance of reception space. The formal reception with two large windows and Juliette balconies overlooks the stunning communal garden which residents' of Cleveland Square have exclusive access to. This well proportioned home also offers a formal dining room and a bright open plan reception on the top floor with skylights and bifolding doors opening onto a south-facing balcony.

The penthouse further benefits from its own private roof terrace and the property is accessible via a lift.



*Cleveland Square is located in the heart of Bayswater with the many shops, bars and restaurants of Whiteleys and Westbourne Grove nearby. Local transport links include Paddington Mainline (Network Rail, Heathrow Express) and Underground Stations (Bakerloo, Hammersmith and City, Circle and District lines) and Lancaster Gate (Central Line) Underground Station.*





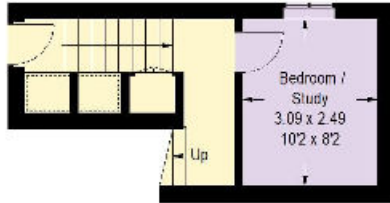






# Cleveland Square

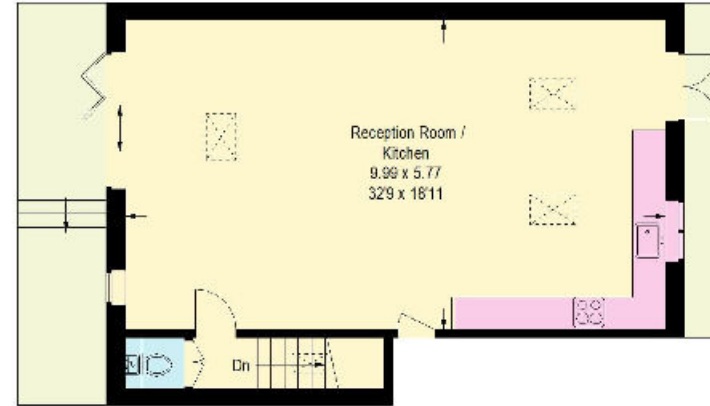
Approximate Gross Internal Area  
266.4 sq m / 2867 sq ft



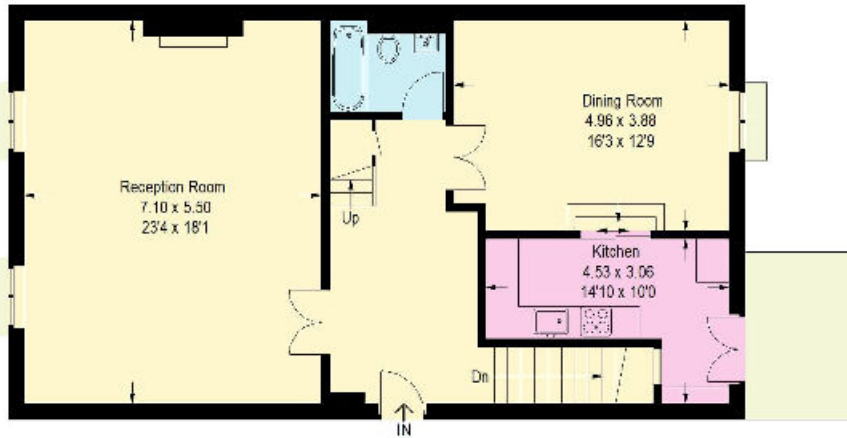
Second Floor



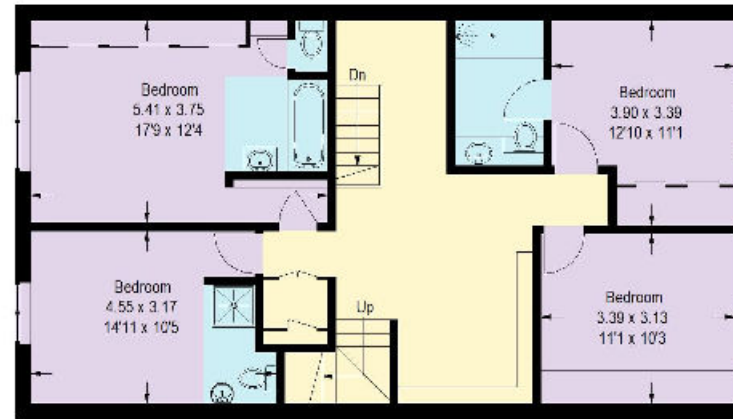
Reduced headroom  
below 1.5 m / 5'0"



Fifth Floor



Third Floor



Fourth Floor

Knight Frank  
Hyde Park  
1 Craven Terrace  
London  
W2 3QD

[knightfrank.co.uk](https://www.knightfrank.co.uk)

**We would be delighted to tell you more.**

020 7871 5060  
[hydepark@knightfrank.com](mailto:hydepark@knightfrank.com)



**Connecting people & property, perfectly.**

Fixtures and fittings: A list of the fitted carpets, curtains, light fittings and other items fixed to the property which are included in the sale (or may be available by separate negotiation) will be provided by the Seller's Solicitors.

Important Notice: 1. Particulars: These particulars are not an offer or contract, nor part of one. You should not rely on statements by Knight Frank LLP in the particulars or by word of mouth or in writing ("information") as being factually accurate about the property, its condition or its value. Neither Knight Frank LLP nor any joint agent has any authority to make any representations about the property, and accordingly any information given is entirely without responsibility on the part of the agents, seller(s) or lessor(s). 2. Photos, Videos etc: The photographs, property videos and virtual viewings etc. show only certain parts of the property as they appeared at the time they were taken. Areas, measurements and distances given are approximate only. 3. Regulations etc: Any reference to alterations to, or use of, any part of the property does not mean that any necessary planning, building regulations or other consent has been obtained. A buyer or lessee must find out by inspection or in other ways that these matters have been properly dealt with and that all information is correct. 4. VAT: The VAT position relating to the property may change without notice. 5. To find out how we process Personal Data, please refer to our Group Privacy Statement and other notices at <https://www.knightfrank.com/legals/privacy-statement>.

Particulars dated September 2021. Photographs and videos dated September 2021.

Knight Frank is the trading name of Knight Frank LLP. Knight Frank LLP is a limited liability partnership registered in England and Wales with registered number OC305934. Our registered office is at 55 Baker Street, London W1U 8AN where you may look at a list of members' names. If we use the term 'partner' when referring to one of our representatives, that person will either be a member, employee, worker or consultant of Knight Frank LLP and not a partner in a partnership. If you do not want us to contact you further about our services then please contact us by either calling 020 3544 0692, email to [marketing.help@knightfrank.com](mailto:marketing.help@knightfrank.com) or post to our UK Residential Marketing Manager at our registered office (above) providing your name and address.