



Sussex Mews East, Hyde Park W2

Sussex Mews East, Hyde Park W2

Located on a secluded mews moments from Hyde Park this immaculately presented two bedroom property benefits from good living spaces and short distance from Hyde Park.

The property is arranged over three floors and comprises entrance hallway, shower room and garage (currently used as a third bedroom) on the ground floor.

There's a smart open plan reception room and kitchen with large windows and wood floors on the first floor.

The top floor is where the principal suite is with en suite bathroom, and a second bedroom with en suite shower room.



Guide price: £1,450,000

Tenure: Freehold

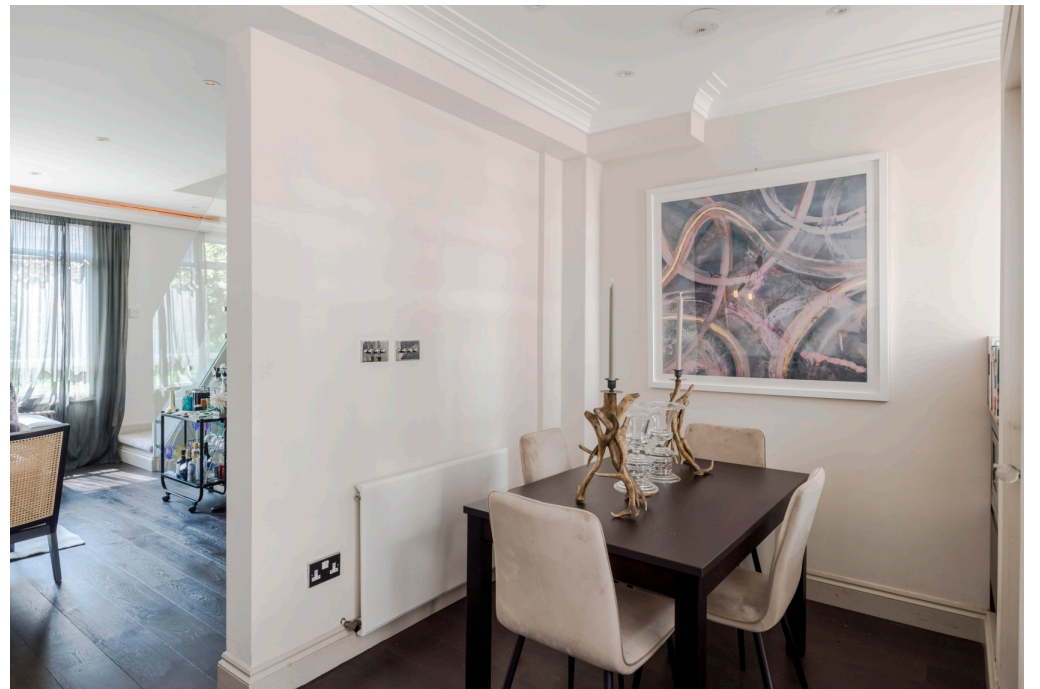
Local authority: City of Westminster

Council tax band: G

Location

Sussex Mews East is moments away from the numerous boutiques, shops of Connaught Village and transport links of Paddington. Paddington mainline (Network Rail and Heathrow Express) and underground (District, Circle, Bakerloo and Hammersmith & City lines) stations are also within close proximity as well as Crossrail which offers faster journey times into the City and Canary Wharf.





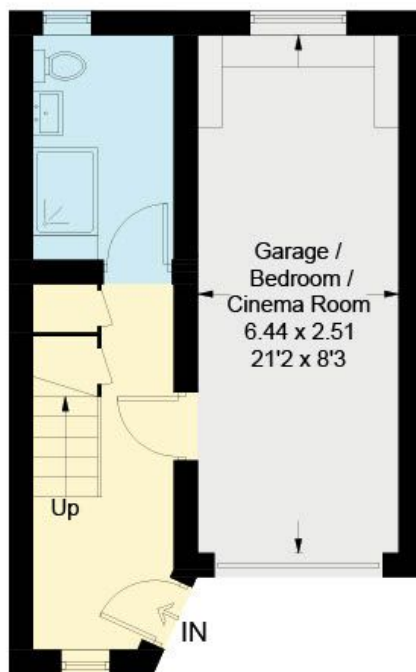


SUSSEX
MEWS EAST W2
CITY OF WESTMINSTER

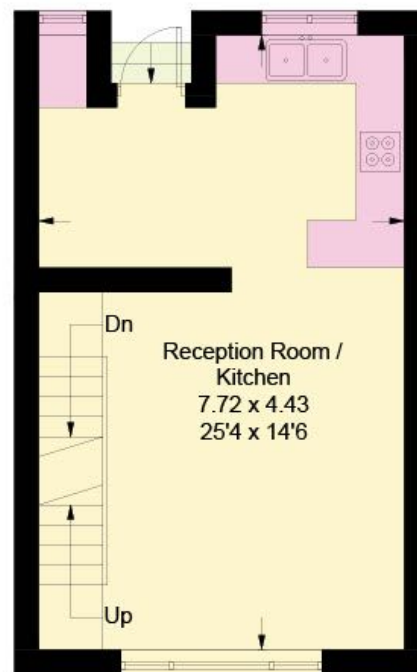
This plan is for guidance only and must not be relied upon as a statement of fact. Attention is drawn to the important notice on the last page of the text of the Particulars.

Sussex Mews East

Approximate Gross Internal Area = 99.6 sq m / 1072 sq ft
(Including Garage)



Ground Floor



First Floor



Second Floor

Knight Frank
Hyde Park
1 Craven Terrace
London
W2 3QD
[knightfrank.co.uk](https://www.knightfrank.co.uk)

I would be delighted to tell you more
Tim Perks
+44 20 7871 5065
tim.perks@knightfrank.com



Fixtures and fittings: A list of the fitted carpets, curtains, light fittings and other items fixed to the property which are included in the sale (or may be available by separate negotiation) will be provided by the Seller's Solicitors.

Important Notice: 1. Particulars: These particulars are not an offer or contract, nor part of one. You should not rely on statements by Knight Frank LLP in the particulars or by word of mouth or in writing ("information") as being factually accurate about the property, its condition or its value. Neither Knight Frank LLP nor any joint agent has any authority to make any representations about the property, and accordingly any information given is entirely without responsibility on the part of the agents, seller(s) or lessor(s). 2. Photos, Videos etc: The photographs, property videos and virtual viewings etc. show only certain parts of the property as they appeared at the time they were taken. Areas, measurements and distances given are approximate only. 3. Regulations etc: Any reference to alterations to, or use of, any part of the property does not mean that any necessary planning, building regulations or other consent has been obtained. A buyer or lessee must find out by inspection or in other ways that these matters have been properly dealt with and that all information is correct. 4. VAT: The VAT position relating to the property may change without notice. 5. To find out how we process Personal Data, please refer to our Group Privacy Statement and other notices at <https://www.knightfrank.com/legals/privacy-statement>.

Particulars dated June 2023. Photographs and videos dated June 2023.

Knight Frank is the trading name of Knight Frank LLP. Knight Frank LLP is a limited liability partnership registered in England and Wales with registered number OC305934. Our registered office is at 55 Baker Street, London W1U 8AN where you may look at a list of members' names. If we use the term 'partner' when referring to one of our representatives, that person will either be a member, employee, worker or consultant of Knight Frank LLP and not a partner in a partnership. If you do not want us to contact you further about our services then please contact us by either calling 020 3544 0692, email to marketing.help@knightfrank.com or post to our UK Residential Marketing Manager at our registered office (above) providing your name and address.