



The image shows a bright, modern living room. On the left, a beige sofa with a blue and white patterned cushion and two dark blue pillows sits on a light-colored wooden floor. A large, framed cartoon painting of a man in a top hat and a boy with a briefcase is on the wall above the sofa. In the center, a white armchair with a purple cushion and a patterned seat cushion faces a large window. The window has white frames and looks out onto a city street with buildings. To the right of the window is a dark wood sideboard with a patterned front and a television mounted on the wall above it. A white lamp is on a small table next to the sofa. The ceiling has a white cylindrical pendant light. The room is well-lit by natural light from the window.

Heron Court Bayswater W2





Located within a well maintained residential building near Hyde Park, this wonderfully presented two bedroomed apartment benefits from bright rooms, porter and lift. The property is situated on the fourth floor and comprises a good sized reception room with large window to small balcony area, dining space and a fitted kitchen with ample space for utilities. The two bedrooms are both of an equal size and feature fitted wardrobes and there is also a tiled shower room. Heron Court is on a quiet road just North of Hyde Park and is a great location for amenities and transport links.



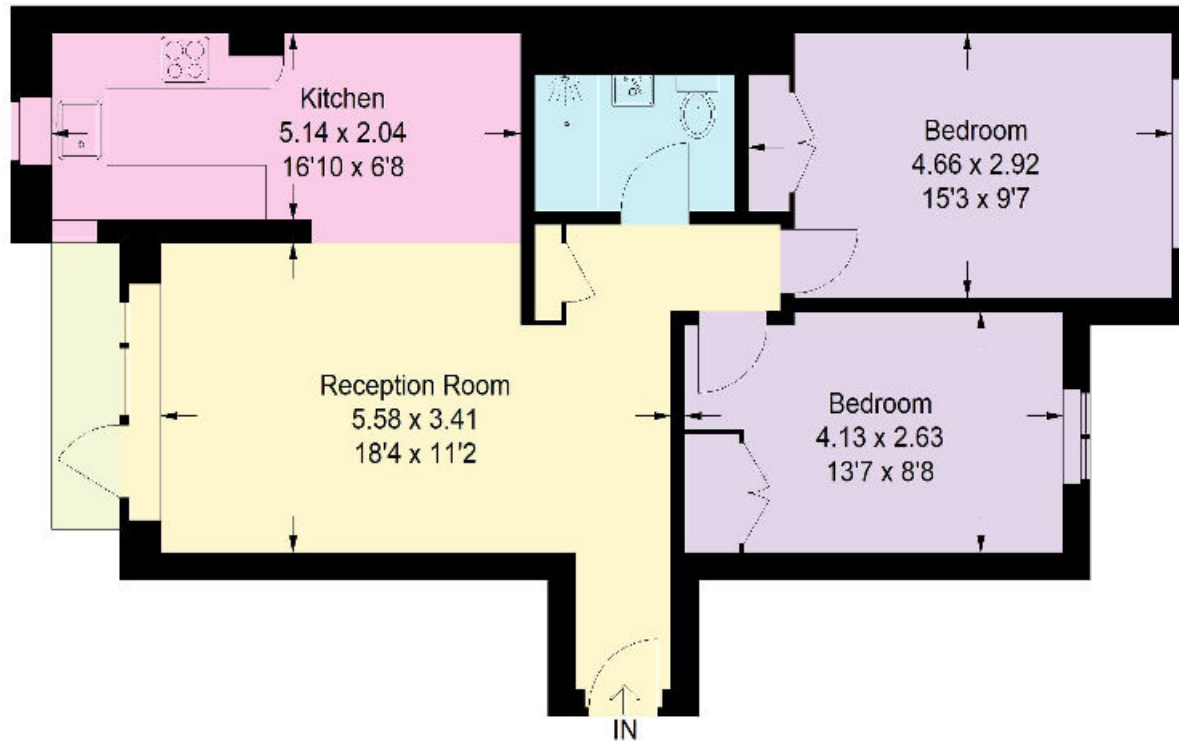
Asking price
£850,000
Leasehold sale



Lancaster Gate is located off the Bayswater Road, within close proximity to Lancaster Gate (Central line) station and Paddington mainline (Network Rail, Heathrow Express) and underground (Hammersmith & City, Bakerloo, Circle and District lines) stations. The property is perfectly positioned for the imminent arrival of Crossrail, which will offer faster journey times into the City and Canary Wharf.

Heron Court

Approximate Gross Internal Area = 65 sq m / 700 sq ft



Fourth Floor

Illustration for identification purposes only, measurements are approximate, not to scale.

FloorplansUsketch.com © 2021 (ID 812421)

Knight Frank
Hyde Park
1 Craven Terrace
London
W2 3QD

[knightfrank.co.uk](https://www.knightfrank.co.uk)

We would be delighted to tell you more.

020 7871 5060
hydepark@knightfrank.com



Your partners in property

Fixtures and fittings: A list of the fitted carpets, curtains, light fittings and other items fixed to the property which are included in the sale (or may be available by separate negotiation) will be provided by the Seller's Solicitors.

Important Notice: 1. Particulars: These particulars are not an offer or contract, nor part of one. You should not rely on statements by Knight Frank LLP in the particulars or by word of mouth or in writing ("information") as being factually accurate about the property, its condition or its value. Neither Knight Frank LLP nor any joint agent has any authority to make any representations about the property, and accordingly any information given is entirely without responsibility on the part of the agents, seller(s) or lessor(s). 2. Photos, Videos etc: The photographs, property videos and virtual viewings etc. show only certain parts of the property as they appeared at the time they were taken. Areas, measurements and distances given are approximate only. 3. Regulations etc: Any reference to alterations to, or use of, any part of the property does not mean that any necessary planning, building regulations or other consent has been obtained. A buyer or lessee must find out by inspection or in other ways that these matters have been properly dealt with and that all information is correct. 4. VAT: The VAT position relating to the property may change without notice. 5. To find out how we process Personal Data, please refer to our Group Privacy Statement and other notices at <https://www.knightfrank.com/legals/privacy-statement>.

Particulars dated November 2021. Photographs and videos dated November 2021.

Knight Frank is the trading name of Knight Frank LLP. Knight Frank LLP is a limited liability partnership registered in England and Wales with registered number OC305934. Our registered office is at 55 Baker Street, London W1U 8AN where you may look at a list of members' names. If we use the term 'partner' when referring to one of our representatives, that person will either be a member, employee, worker or consultant of Knight Frank LLP and not a partner in a partnership. If you do not want us to contact you further about our services then please contact us by either calling 020 3544 0692, email to marketing.help@knightfrank.com or post to our UK Residential Marketing Manager at our registered office (above) providing your name and address.