

Albion Street, W2

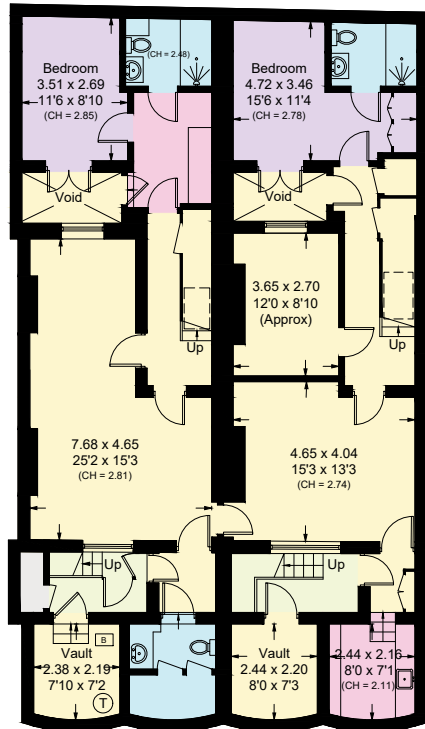
Approximate Area = 577.7 sq m / 6218 sq ft

Landing Storage = 2.5 sq m / 27 sq ft

Total = 580.2 sq m / 6245 sq ft

(Excluding Void / Including Vaults)

Including Limited Use Area (5.1 sq m / 55 sq ft)

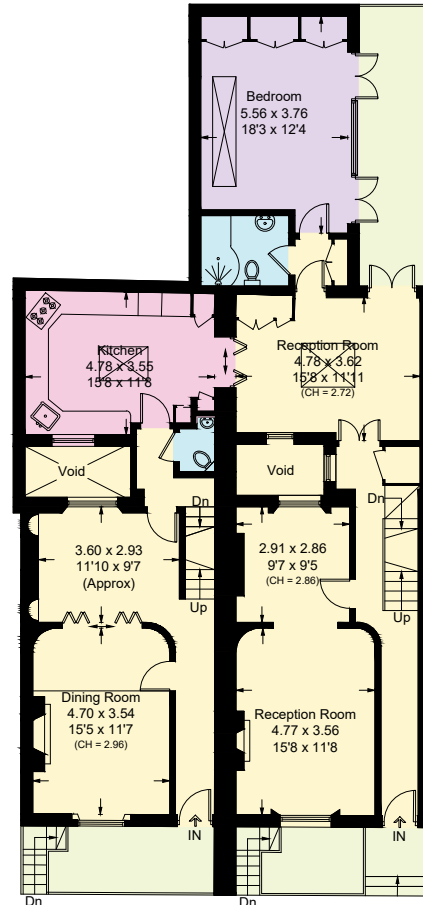


Lower Ground Floor

Approximate Area = 123.4 sq m / 1328 sq ft

Vaults Area = 29.4 sq m / 316 sq ft

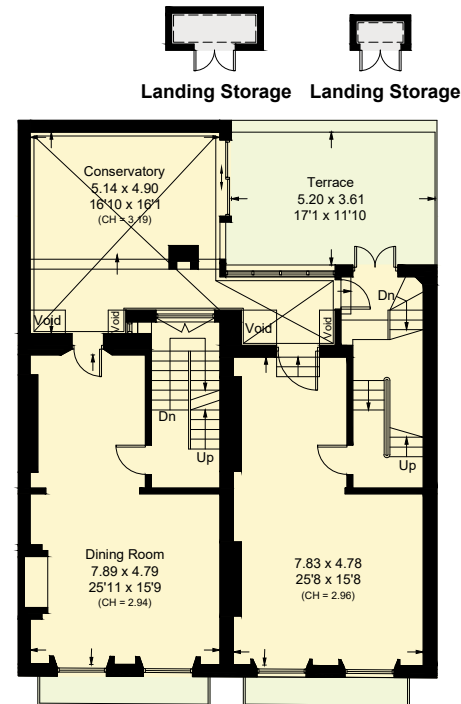
Including Limited Use Area (2.3 sq m / 25 sq ft)



Ground Floor

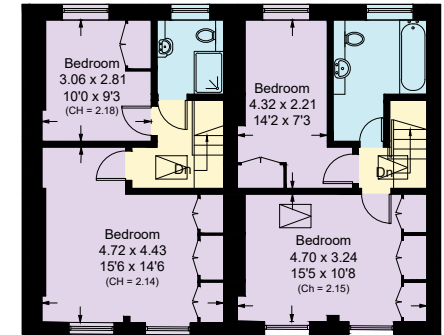
Approximate Area = 149.9 sq m / 1613 sq ft

☐ = Reduce head height below 1.5m



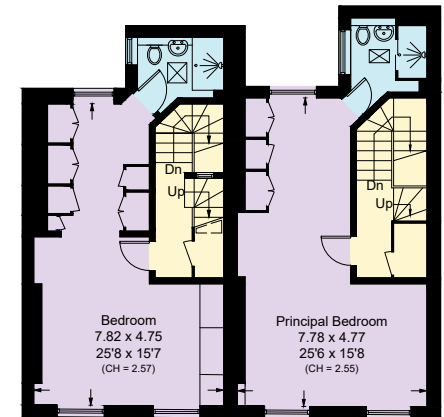
First Floor

Approximate Area = 116.9 sq m / 1258 sq ft



Third Floor

Approximate Area = 73.7 sq m / 793 sq ft



Second Floor

Approximate Area = 84.3 sq m / 907 sq ft

Including Limited Use Area (0.2 sq m / 2 sq ft)

Surveyed and drawn in accordance with the International property measurements standards (IPMS 2: Residential) Not drawn to scale unless stated.
Whilst every care is taken in the preparation of this plan, please check all dimensions, shapes and compass bearings before making any decisions reliant upon them.