



Stanhope Place,
Hyde Park W2



Stanhope Place, Hyde Park W2

This impressively designed Grade II Listed house provides fantastic living space inside and out, with two terraces, balconies and voluminous internal living areas. Offering generous living space which has been recently decorated throughout, the property comprises six double bedrooms, three bathrooms, two shower rooms, dining room, drawing room, a large loft-style reception space, a modern fully fitted eat in kitchen, study, utility room, three WC's, wine cellar and fantastic roof terrace.

The first-floor reception room with lovely cornicing is light and bright, with three sets of French doors opening out onto a Juliet balcony. The various reception areas provide complete flexibility on the use of space, perfect for entertaining and relaxing. Cleverly designed features include a mid-landing refreshment point, mirrored shelving to maximise light and sense of space and a hydraulic skylight accessing the roof terrace.



Guide price: £4,995,000

Tenure: Available freehold

Local authority: City of Westminster

Council tax band: H

The principal suite occupies the second floor and features a stunning bathroom with a bath and separate shower and a bespoke designed dressing room. There are an additional five well-proportioned bedrooms and 3 more bathrooms. The house further benefits from air-conditioning.

Location

Stanhope Place, known for some of W2's most prestigious properties, is located in the heart of Connaught Village with its vast selection of boutique cafes and small independent shops. Neighbouring Mayfair and the West End, the house is situated steps away from the open green spaces of Hyde Park. The nearest underground station is Lancaster Gate (Central Line).

The area is also served by Paddington mainline (Network Rail, Heathrow Express) and underground (Elizabeth, District, Circle, Bakerloo, Hammersmith & City lines) station.









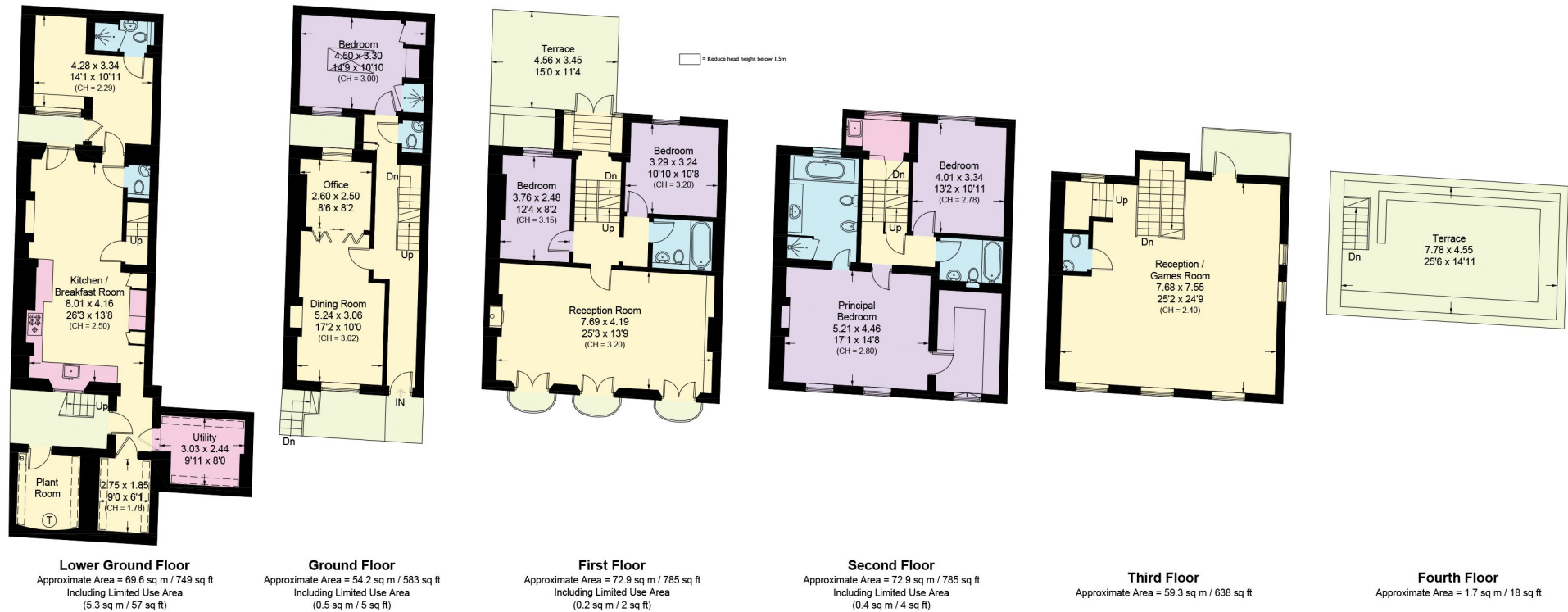


A charming 6-
bedroom house for
sale in Connaught
Village, Hyde Park,
W2.



Stanhope Place, W2

Approximate Area = 330.6 sq m / 3558 sq ft
 Plant Room = 6.2 sq m / 67 sq ft
 Total = 336.8 sq m / 3625 sq ft
 Including Limited Use Area (6.4 sq m / 69 sq ft)



This plan is for guidance only and must not be relied upon as a statement of fact. Attention is drawn to the important notice on the last page of the text of the Particulars.

Knight Frank
Hyde Park
1 Craven Terrace
London
W2 3QD

Laura Dam Villena
020 3978 2463
laura.damvillena@knightfrank.com

[knightfrank.co.uk](https://www.knightfrank.co.uk)

Your partners in property



Fixtures and fittings: A list of the fitted carpets, curtains, light fittings and other items fixed to the property which are included in the sale (or may be available by separate negotiation) will be provided by the Seller's Solicitors.

Important Notice: 1. Particulars: These particulars are not an offer or contract, nor part of one. You should not rely on statements by Knight Frank LLP in the particulars or by word of mouth or in writing ("information") as being factually accurate about the property, its condition or its value. Neither Knight Frank LLP nor any joint agent has any authority to make any representations about the property, and accordingly any information given is entirely without responsibility on the part of the agents, seller(s) or lessor(s). 2. Photos, Videos etc: The photographs, property videos and virtual viewings etc. show only certain parts of the property as they appeared at the time they were taken. Areas, measurements and distances given are approximate only. 3. Regulations etc: Any reference to alterations to, or use of, any part of the property does not mean that any necessary planning, building regulations or other consent has been obtained. A buyer or lessee must find out by inspection or in other ways that these matters have been properly dealt with and that all information is correct. 4. VAT: The VAT position relating to the property may change without notice. 5. To find out how we process Personal Data, please refer to our Group Privacy Statement and other notices at <https://www.knightfrank.com/legals/privacy-statement>.

Particulars dated May 2023. Photographs and videos dated May 2023.

All information is correct at the time of going to print. Knight Frank is the trading name of Knight Frank LLP. Knight Frank LLP is a limited liability partnership registered in England and Wales with registered number OC305934. Our registered office is at 55 Baker Street, London W1U 8AN. We use the term 'partner' to refer to a member of Knight Frank LLP, or an employee or consultant. A list of members names of Knight Frank LLP may be inspected at our registered office. If you do not want us to contact you further about our services then please contact us by either calling 020 3544 0692, email to marketing.help@knightfrank.com or post to our UK Residential Marketing Manager at our registered office (above) providing your name and address.