

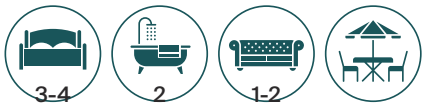


Westbourne Terrace, London W2

Westbourne Terrace, London W2

Situated within a beautiful period building, this triplex apartment is entered from the second floor, going up to the third floor for a fantastic entertaining space. The large reception room is dual aspect, with a newly fitted open plan kitchen and access to a small terrace, along with a guest WC.

On the fourth floor, the main bedroom benefits from a private terrace, renovated en suite bathroom and walk-in wardrobe, with two additional double bedrooms that are served by a new family bathroom. There is an additional multi-functional room on the fifth floor which could serve as a fourth bedroom, study or family room. This opens out onto the largest terrace which offers stunning rooftop views.



Guide price

2,750,000

Tenure

Share of freehold

Local authority

City of
Westminster

Peppercorn rent

KF





Location

Westbourne Terrace is centrally located with excellent transport links such as Lancaster Gate underground (Central line) and Paddington mainline (Network Rail and Heathrow Express) and underground (District, Circle, Bakerloo and Hammersmith & City lines) station.

It now also benefits from the new Elizabeth line which offers faster journey times into the City and Canary Wharf. Oxford Street and the West End are both easily accessible, offering some of London's best shops, restaurants and theatres.

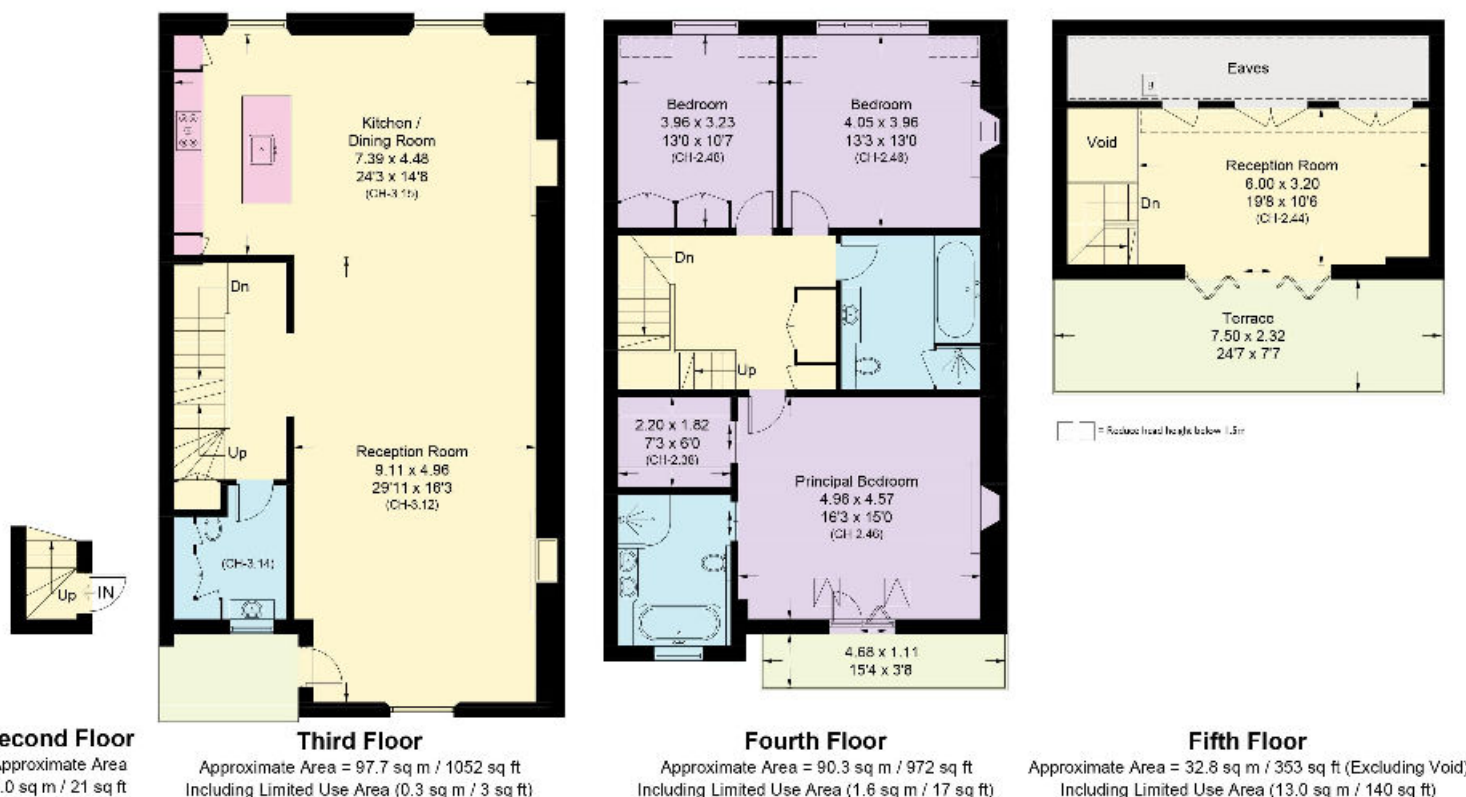






Westbourne Terrace, W2

Approximate Area = 222.8 sq m / 2398 sq ft
(Excluding Void)
Including Limited Use Area (14.9 sq m / 160 sq ft)



Knight Frank
Hyde Park
1 Craven Terrace
London
W2 3QD
[knightfrank.co.uk](https://www.knightfrank.co.uk)

I would be delighted to tell you more
Tim Perks
020 7871 5065
tim.perks@knightfrank.com

Surveyed and drawn in accordance with the International property measurements standards (IPMS 2: Residential) Not drawn to scale unless stated.
Whilst every care is taken in the preparation of this plan, please check all dimensions, shapes and compass bearings before making any decisions reliant upon them.



Fixtures and fittings: A list of the fitted carpets, curtains, light fittings and other items fixed to the property which are included in the sale (or may be available by separate negotiation) will be provided by the Seller's Solicitors.

Important Notice: 1. Particulars: These particulars are not an offer or contract, nor part of one. You should not rely on statements by Knight Frank LLP in the particulars or by word of mouth or in writing ("information") as being factually accurate about the property, its condition or its value. Neither Knight Frank LLP nor any joint agent has any authority to make any representations about the property, and accordingly any information given is entirely without responsibility on the part of the agents, seller(s) or lessor(s). 2. Photos, Videos etc: The photographs, property videos and virtual viewings etc. show only certain parts of the property as they appeared at the time they were taken. Areas, measurements and distances given are approximate only. 3. Regulations etc: Any reference to alterations to, or use of, any part of the property does not mean that any necessary planning, building regulations or other consent has been obtained. A buyer or lessee must find out by inspection or in other ways that these matters have been properly dealt with and that all information is correct. 4. VAT: The VAT position relating to the property may change without notice. 5. To find out how we process Personal Data, please refer to our Group Privacy Statement and other notices at <https://www.knightfrank.com/legals/privacy-statement>. Particulars dated May 2022. Photographs and videos dated May 2022.

Knight Frank is the trading name of Knight Frank LLP. Knight Frank LLP is a limited liability partnership registered in England and Wales with registered number OC305934. Our registered office is at 55 Baker Street, London W1U 8AN where you may look at a list of members' names. If we use the term 'partner' when referring to one of our representatives, that person will either be a member, employee, worker or consultant of Knight Frank LLP and not a partner in a partnership. If you do not want us to contact you further about our services then please contact us by either calling 020 3544 0692, email to marketing.help@knightfrank.com or post to our UK Residential Marketing Manager at our registered office (above) providing your name and address.