



The Quadrangle, Hyde Park W2

---

# The Quadrangle, Hyde Park W2

Located on the prestigious Hyde Park Estate, this ground floor three bedroom apartment measures approximately 116.4 sq. m. (1253 sq. ft.).

The property comprises of a sizeable reception room with space for dining and a separate fitted kitchen with ample workspace, fitted cabinets and integrated appliances.

Accessed from the main hallway, a great principal bedroom with fitted wardrobes and an en suite shower room, second bedroom with fitted wardrobes, third bedroom and contemporary family shower room.



**Guide price:** £1,100,000

**Tenure:** Leasehold: approximately 61 years remaining

**Service charge:** £11,346.32 per annum plus £4200 PA res fund, reviewed every year, next review due 2025

**Ground rent:** £500 per annum, reviewed every year, next review due 2025

**Local authority:** City of Westminster

**Council tax band:** G











This is a gated development and features a communal garden and 24 hour concierge service. This apartment is ideally situated with garden views from both back and front and onsite parking can be rented via separate negotiation.

The Quadrangle is located on the prestigious Hyde Park Estate offering easy access to the beautiful open spaces of Hyde Park. Lancaster Gate (Central line), Edgware Road (Bakerloo, Circle, District, Hammersmith & City lines) and Paddington Mainline (National Rail, Heathrow Express) and Elizabeth line stations are all within close proximity.

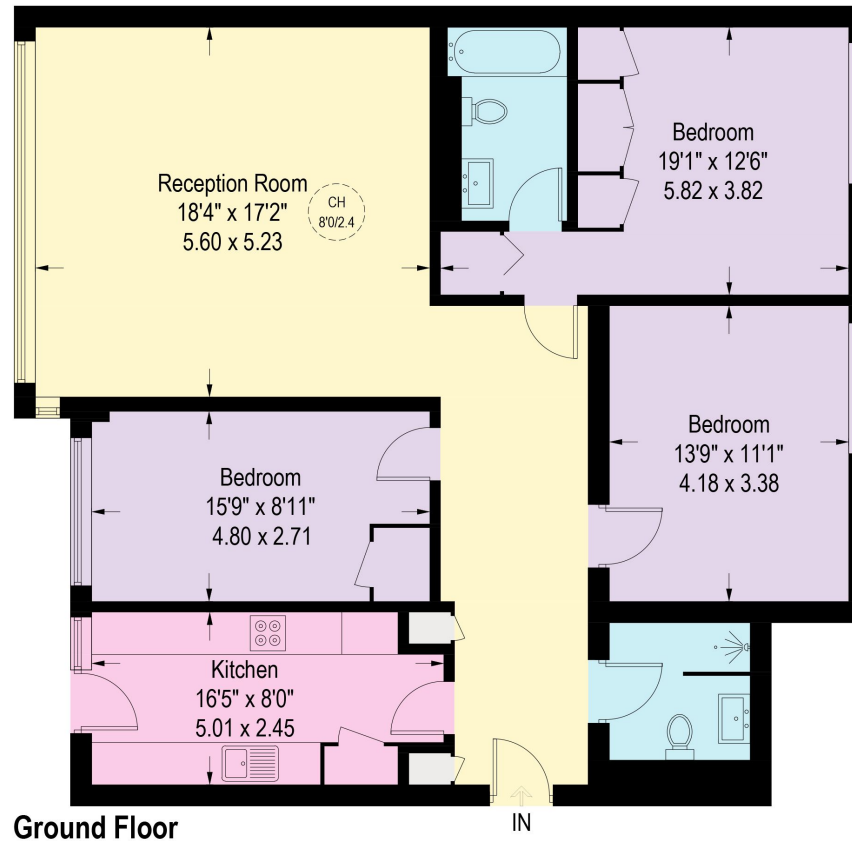


# Southwick Street, London, W2

Approximate Gross Internal Area = 1253 sq ft / 116.4 sq m



This plan is for guidance only and must not be relied upon as a statement of fact. Attention is drawn to the important notice on the last page of the text of the Particulars.



**Knight Frank**  
**Hyde Park**  
1 Craven Terrace  
London  
W2 3QD  
[knightfrank.co.uk](http://knightfrank.co.uk)

I would be delighted to tell you more  
**Mark Ruffell**  
020 3697 8234  
[mark.ruffell@knightfrank.com](mailto:mark.ruffell@knightfrank.com)

))



Fixtures and fittings: A list of the fitted carpets, curtains, light fittings and other items fixed to the property which are included in the sale (or may be available by separate negotiation) will be provided by the Seller's Solicitors.

Important Notice: 1. Particulars: These particulars are not an offer or contract, nor part of one. You should not rely on statements by Knight Frank LLP in the particulars or by word of mouth or in writing ("information") as being factually accurate about the property, its condition or its value. Neither Knight Frank LLP nor any joint agent has any authority to make any representations about the property, and accordingly any information given is entirely without responsibility on the part of the agents, seller(s) or lessor(s). 2. Photos, Videos etc: The photographs, property videos and virtual viewings etc. show only certain parts of the property as they appeared at the time they were taken. Areas, measurements and distances given are approximate only. 3. Regulations etc: Any reference to alterations to, or use of, any part of the property does not mean that any necessary planning, building regulations or other consent has been obtained. A buyer or lessee must find out by inspection or in other ways that these matters have been properly dealt with and that all information is correct. 4. VAT: The VAT position relating to the property may change without notice. 5. To find out how we process Personal Data, please refer to our Group Privacy Statement and other notices at <https://www.knightfrank.com/legals/privacy-statement>.

Particulars dated July 2024. Photographs and videos dated July 2024.

Knight Frank is the trading name of Knight Frank LLP. Knight Frank LLP is a limited liability partnership registered in England and Wales with registered number OC305934. Our registered office is at 55 Baker Street, London W1U 8AN where you may look at a list of members' names. If we use the term 'partner' when referring to one of our representatives, that person will either be a member, employee, worker or consultant of Knight Frank LLP and not a partner in a partnership. If you do not want us to contact you further about our services then please contact us by either calling 020 3544 0692, email to [marketing.help@knightfrank.com](mailto:marketing.help@knightfrank.com) or post to our UK Residential Marketing Manager at our registered office (above) providing your name and address.