



Gloucester Terrace, Hyde Park W2



Gloucester Terrace

Hyde Park W2

Forming part of a beautiful white stucco building, the apartment offers spacious living and has been renovated to a high standard.

The flat is bright, south-facing and situated on the ground floor and boasts exceptional ceiling heights. Accommodation comprises a striking open plan reception with ample space for dining and a vast range of fitted storage cabinets and integrated appliances. Elsewhere there is a large quietly situated bedroom with extensive wardrobe space and finally a shower room.



Guide price: £750,000

Tenure: Leasehold: approximately 987 years remaining

Service charge: £3,225.48 per annum, reviewed every year, next review due 2025.

Local authority: City of Westminster

Council tax band: E



Location

Gloucester Terrace is centrally located with excellent transport links from Lancaster Gate underground (Central line), Paddington mainline (Network Rail) and Paddington underground (the Elizabeth line, which offers access to the City in 8 minutes, Canary Wharf in 18 minutes and Heathrow Airport in 35 minutes, along with the District, Circle, Bakerloo and Hammersmith & City lines).

Oxford Street and the West End are both easily accessible offering some of the best shops, restaurants and theatre London has to offer.

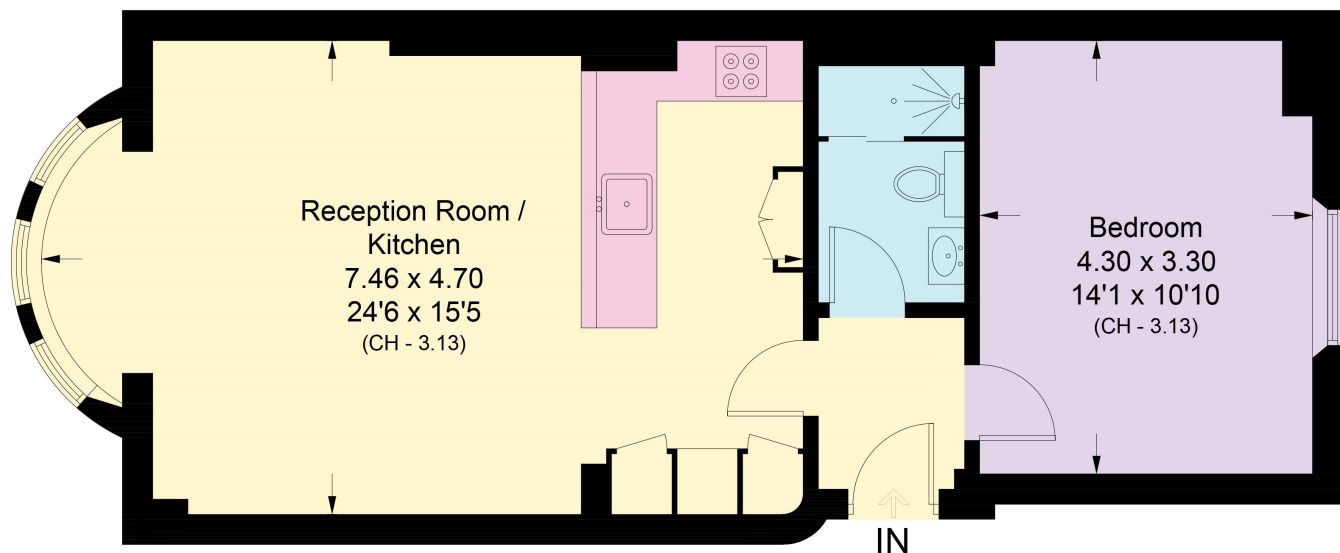


Gloucester Terrace, W2

Approximate Area = 55.7 sq m / 599 sq ft
Including Limited Use Area (0.5 sq m / 5 sq ft)



This plan is for guidance only and must not be relied upon as a statement of fact. Attention is drawn to the important notice on the last page of the text of the Particulars.



Ground Floor

Approximate Area = 55.7 sq m / 599 sq ft
Including Limited Use Area (0.5 sq m / 5 sq ft)

Knight Frank

Hyde Park

1 Craven Terrace

London

W2 3QD

[knightfrank.co.uk](https://www.knightfrank.co.uk)

I would be delighted to tell you more

Mark Ruffell

020 3697 8234

mark.ruffell@knightfrank.com



Fixtures and fittings: A list of the fitted carpets, curtains, light fittings and other items fixed to the property which are included in the sale (or may be available by separate negotiation) will be provided by the Seller's Solicitors.

Important Notice: 1. Particulars: These particulars are not an offer or contract, nor part of one. You should not rely on statements by Knight Frank LLP in the particulars or by word of mouth or in writing ("Information") as being factually accurate about the property, its condition or its value. Neither Knight Frank LLP nor any joint agent has any authority to make any representations about the property, and accordingly any information given is entirely without responsibility on the part of the agents, seller(s) or lessor(s). 2. Photos, Videos etc: The photographs, property videos and virtual viewings etc. show only certain parts of the property as they appeared at the time they were taken. Areas, measurements and distances given are approximate only. 3. Regulations etc: Any reference to alterations to, or use of, any part of the property does not mean that any necessary planning, building regulations or other consent has been obtained. A buyer or lessee must find out by inspection or in other ways that these matters have been properly dealt with and that all information is correct. 4. VAT: The VAT position relating to the property may change without notice. 5. To find out how we process Personal Data, please refer to our Group Privacy Statement and other notices at <https://www.knightfrank.com/legals/privacy-statement>.

Particulars dated March 2024. Photographs and videos dated March 2024.

Knight Frank is the trading name of Knight Frank LLP. Knight Frank LLP is a limited liability partnership registered in England and Wales with registered number OC305934. Our registered office is at 55 Baker Street, London W1U 8AN where you may look at a list of members' names. If we use the term 'partner' when referring to one of our representatives, that person will either be a member, employee, worker or consultant of Knight Frank LLP and not a partner in a partnership. If you do not want us to contact you further about our services then please contact us by either calling 020 3544 0692, email to marketing.help@knightfrank.com or post to our UK Residential Marketing Manager at our registered office (above) providing your name and address.