

Blytheswood

Graffham, West Sussex





Blytheswood

Graffham, West Sussex

An extensive country house of some 8,700 sq ft
nestled at the foot of the South Downs within
the South Downs National Park.

Petworth 5 miles, Midhurst 5 miles, Pulborough 8 miles (London Victoria 75 minutes)
Chichester 12 miles, Haslemere 12 miles (London Waterloo from 49 minutes), A3 (Milford) 15 miles
Petersfield 16 miles (London Waterloo from 66 minutes), Guildford 20 miles, M25 (J10) 29 miles
London Gatwick 33 miles, London Heathrow 42 miles, Southampton airport 47 miles, London 50 miles
(All distances and times are approximate)

Accommodation

Entrance hall | Reception hall | Drawing room | Dining room | Family room
Kitchen/breakfast room | Utility room | Orangery

Seven bedrooms | Seven bathrooms

Short tennis court | Pond | Brook | Gardens | Light woodland

Three-bay garage

Approx gross internal area: 8668 sq ft

Approx gross internal area outbuildings: 581 sq ft

In all about 3 acres

Haslemere
1 West Street, Haslemere
GU27 2AB

Tel: +44 1428 770 560
russell.grieve@knightfrank.com



[knightfrank.co.uk](https://www.knightfrank.co.uk)

Country Department
55 Baker Street
London, W1U 8AN

Tel: +44 20 7861 1093
oliver.rodbourne@knightfrank.com



Blytheswood

Blytheswood is an exceptional home within the South Downs National Park with internal space unlike most other houses. Arranged over three floors, each being around 3,000 sq ft, the property offers contemporary living with traditional style.

Quiet and private, the house sits in the centre of its plot within the peaceful but vibrant village of Graffham, which offers local amenities such as the village shop, pub, tennis club and church. Secluded but not isolated, Blytheswood and its gardens face due south providing sunny, unrestricted views of the South Downs.

The recent addition of the fabulous kitchen/breakfast orangery at the rear of the house is perfect for all the family in which to socialise. The south and west facing views of the garden and South Downs from the orangery and the 180 degree bi-folding doors, extend the house into the garden and make the outside feel part of the living space. The ground floor has underfloor heating throughout.

On the first floor, the extensive landing leads to four impressive bedrooms all with en suite bathrooms. The top floor has three further bedrooms, again all with en suite bathrooms, with two bedrooms available as interconnecting.

Outside there is a substantial three-bay garage, lawns, a paddock, light woodland and stream.

Situation

Schools

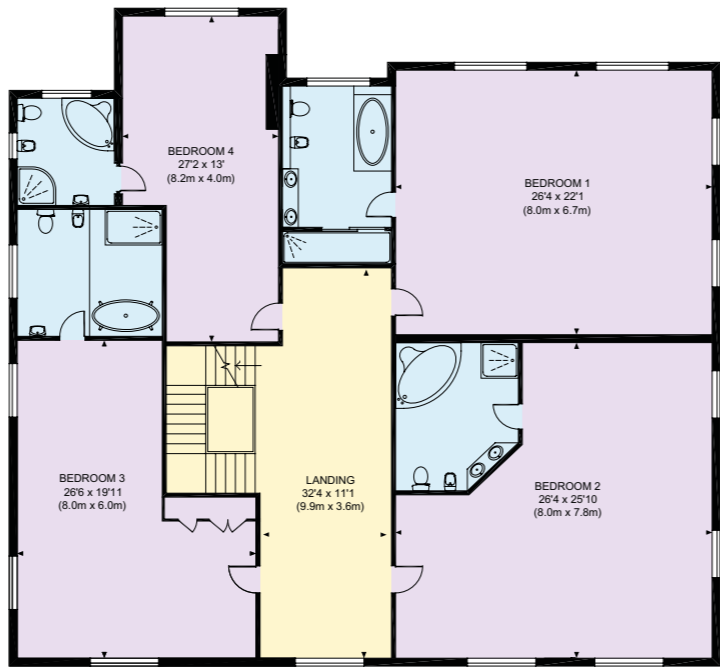
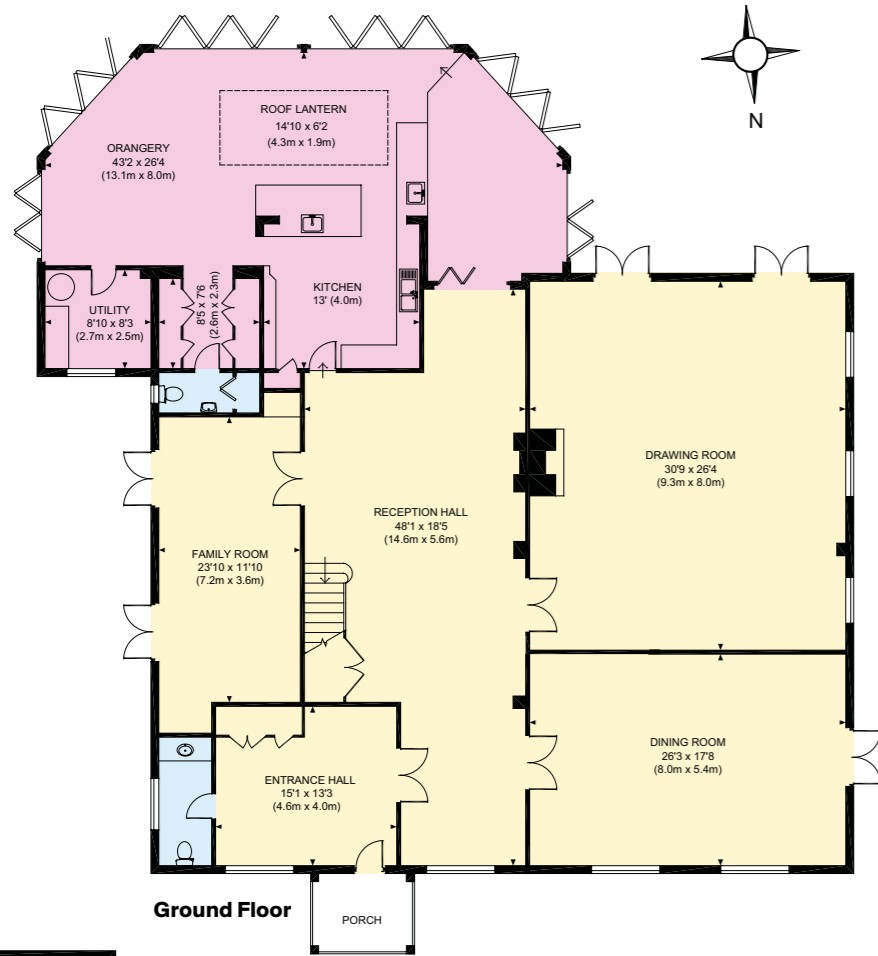
Westbourne House and Prebendal at Chichester, Dorset House at Bury, Seaford College at Duncton, Ambesury, St Edmunds and The Royal School at Hindhead, Bedales and Churcher's at Petersfield, St. Ives at Haslemere and Cranleigh School.

Racing

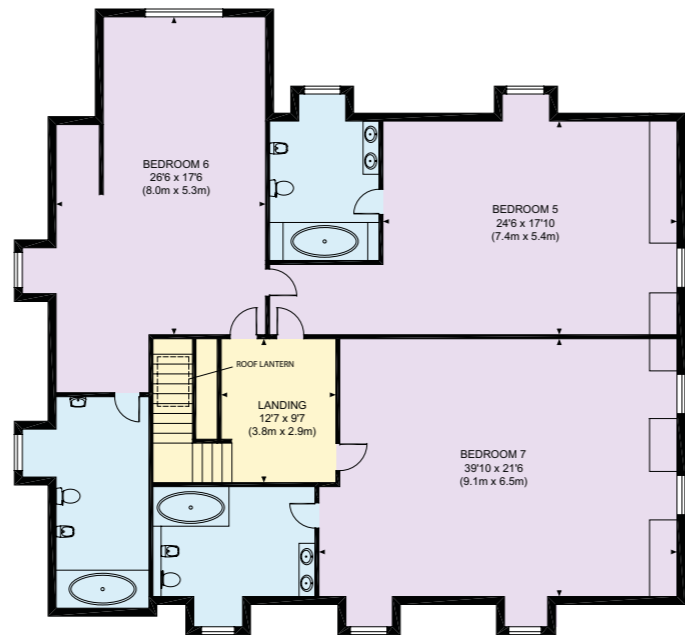
Goodwood
Fontwell



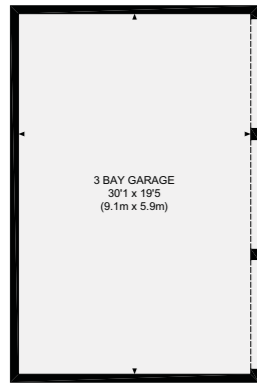
- Reception
- Bedroom
- Bathroom
- Kitchen/Utility
- Storage
- Outside



First Floor



Second Floor



(Not in actual location)

Approximate Gross Internal Floor Area
8668 sq.ft / 805.3 sq.m
Outbuildings: 581 sq.ft / 54.0 sq.m

This plan is for guidance only and must not be relied upon as a statement of fact. Attention is drawn to the Important Notice on the last page of the text of the Particulars



Polo

Cowdray Park

Golf

Cowdray, Goodwood
West Sussex
Pulborough
Petersfield
Hindhead
Liphook

Sailing

Bosham
Chichester Harbour and the South Coast

Directions (GU28 0PY)

From the A3 proceed past Guildford and exit at Milford (A283) signposted Petworth and follow that road through Witley, Chiddingfold and Northchapel. Upon reaching Petworth, proceed straight ahead over the first roundabout and bear left into the one way system. Once at the T-junction turn right and follow the signs for the A285 to Chichester and Duncton. Proceed straight over the mini roundabout out of Petworth and continue for 1.3 miles. Cross over the river and pass the Badger Inn on your left. Go up the hill and turn right towards Graffham and Selham, continue for approximately 1.4 miles and turn left signposted Graffham. Turn right at the village shop and the driveway to Blytheswood is about 100 metres down the hill on the left.

Services

Mains water, electricity, drainage and ultrafast broadband.
Bottled gas for gas hob, oil fired boiler and four oven AGA.

EPC rating

C



Local authority

Chichester District Council, Telephone 01243 785 166

Viewing

Viewing is strictly by appointment only via Knight Frank.

Fixtures and fittings

Only those mentioned in these sales particulars are included in the sale. All other items, such as curtains, light fittings, garden ornaments, etc. are specifically excluded but may be made available by separate negotiation.



Connecting people & property, perfectly.

Fixtures and fittings: A list of the fitted carpets, curtains, light fittings and other items fixed to the property which are included in the sale (or may be available by separate negotiation) will be provided by the Seller's Solicitors.
Important Notice: 1. Particulars: These particulars are not an offer or contract, nor part of one. You should not rely on statements by Knight Frank LLP in the particulars or by word of mouth or in writing ("information") as being factually accurate about the property, its condition or its value. Neither Knight Frank LLP nor any joint agent has any authority to make any representations about the property, and accordingly any information given is entirely without responsibility on the part of the agents, seller(s) or lessor(s). 2. Photos, Videos etc: The photographs, property videos and virtual viewings etc. show only certain parts of the property as they appeared at the time they were taken. Areas, measurements and distances given are approximate only. 3. Regulations etc: Any reference to alterations to, or use of, any part of the property does not mean that any necessary planning, building regulations or other consent has been obtained. A buyer or lessee must find out by inspection or in other ways that these matters have been properly dealt with and that all information is correct. 4. VAT: The VAT position relating to the property may change without notice. 5. To find out how we process Personal Data, please refer to our Group Privacy Statement and other notices at <https://www.knightfrank.com/legals/privacy-statement>. Particulars dated February 2021. Photographs dated Spring 2016 and February 2021. Knight Frank is the trading name of Knight Frank LLP. Knight Frank LLP is a limited liability partnership registered in England and Wales with registered number OC305934. Our registered office is at 55 Baker Street, London W1U 8AN where you may look at a list of members' names. If we use the term 'partner' when referring to one of our representatives, that person will either be a member, employee, worker or consultant of Knight Frank LLP and not a partner in a partnership. If you do not want us to contact you further about our services then please contact us by either calling 020 3544 0692, email to marketing.help@knightfrank.com or post to our UK Residential Marketing Manager at our registered office (above) providing your name and address. Brochure by wordperfectprint.com.

