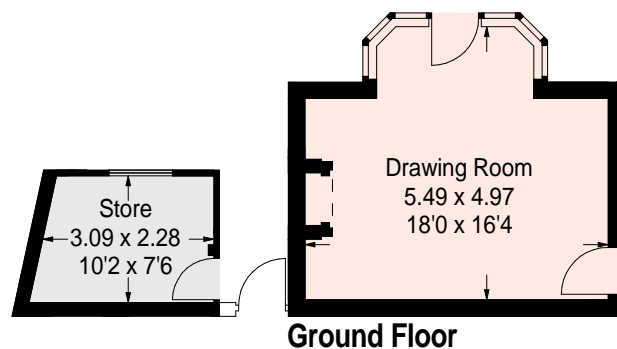
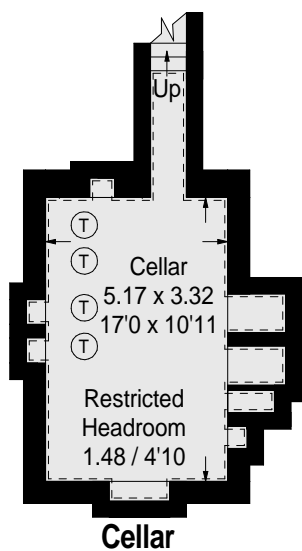
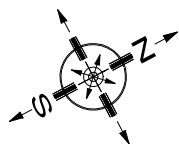
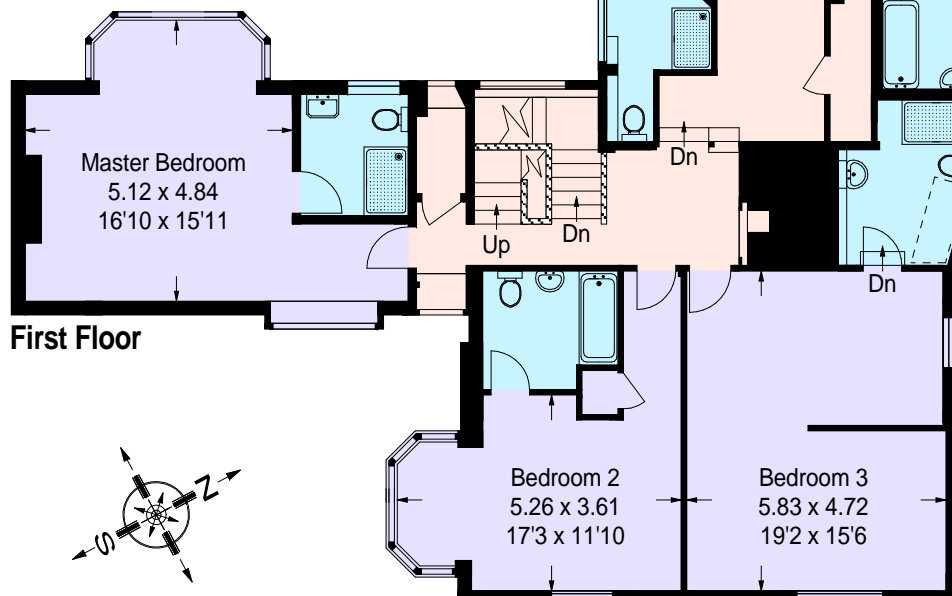


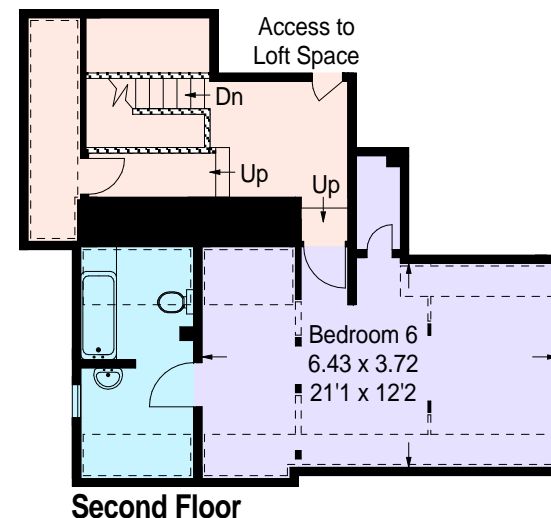
# Tudor Cottage, High Street, Haslemere

Approximate Gross Internal Area :-  
392 sq m / 4218 sq ft

Cellar :- 17 sq m / 183 sq ft



This plan is for layout guidance only. Measured and drawn in accordance with RICS guidelines. Not drawn to scale, unless stated. Whilst every care is taken in the preparation of this plan, please check all dimensions before making any decisions reliant upon them.



[Dashed line] = Reduced headroom below 1.5 m / 5'0"

