



SPENCER COURT | CORBY | NN17 1NU

Location

The property is situated in the heart of Corby Town Centre fronting Spencer Court which links Corporation Street to Queens Square and beyond Willow Place. The property is located in close proximity to a number of national multiple retailers including Esquire's Coffee, Shoezone and a newly opened Cards Direct.

The landlord has continued to invest in the town having recently created a new 470 space surface level car park that serves the town centre. There are over 750 car parking spaces serving Corby Town Centre. Corby has excellent transport links, with Corby Railway Station being located 10 minutes away from the town centre with regular services to London St Pancras taking 1hr 10 mins. Road connections are convenient with the A14 to the south, M1 to the west and A1 to the east.

Accommodation

The premises are arranged over ground floor only and provide the following approximate floor areas:-

Ground Floor Sales 725 sq ft 67.35 sq m

Ground Floor Ancillary 96 sq ft 8.91 sq m

Total 821 sq ft 76.27 sq m

Term

Term to be agreed.

Rent

£26,500 per annum exclusive.

Service Charge

The current on account service charge for the 2024/2025 period is £3,481.

Rates

We have made enquiries via the VOA which confirms the rateable value for the premises are as follows:-

Rates Payable (24/25): £13,750

We suggest that all interested parties should verify the above information with the Local Authority (North Northamptonshire Council – 0300 126 3000).



2 SPENCER COURT CORBY NN17 1NU



RETAIL

EPC

The Energy Performance Asset Rating of the premises currently falls within Category C.

A copy of the Energy Performance Certification can be made available upon request.

Legal

Each party to be responsible for their own legal and professional costs incurred in this transaction.

Viewing

For further information, please contact :

Mike Bumford

+44 7890 943 042

Mike.Bumford@knightfrank.com

David Legat

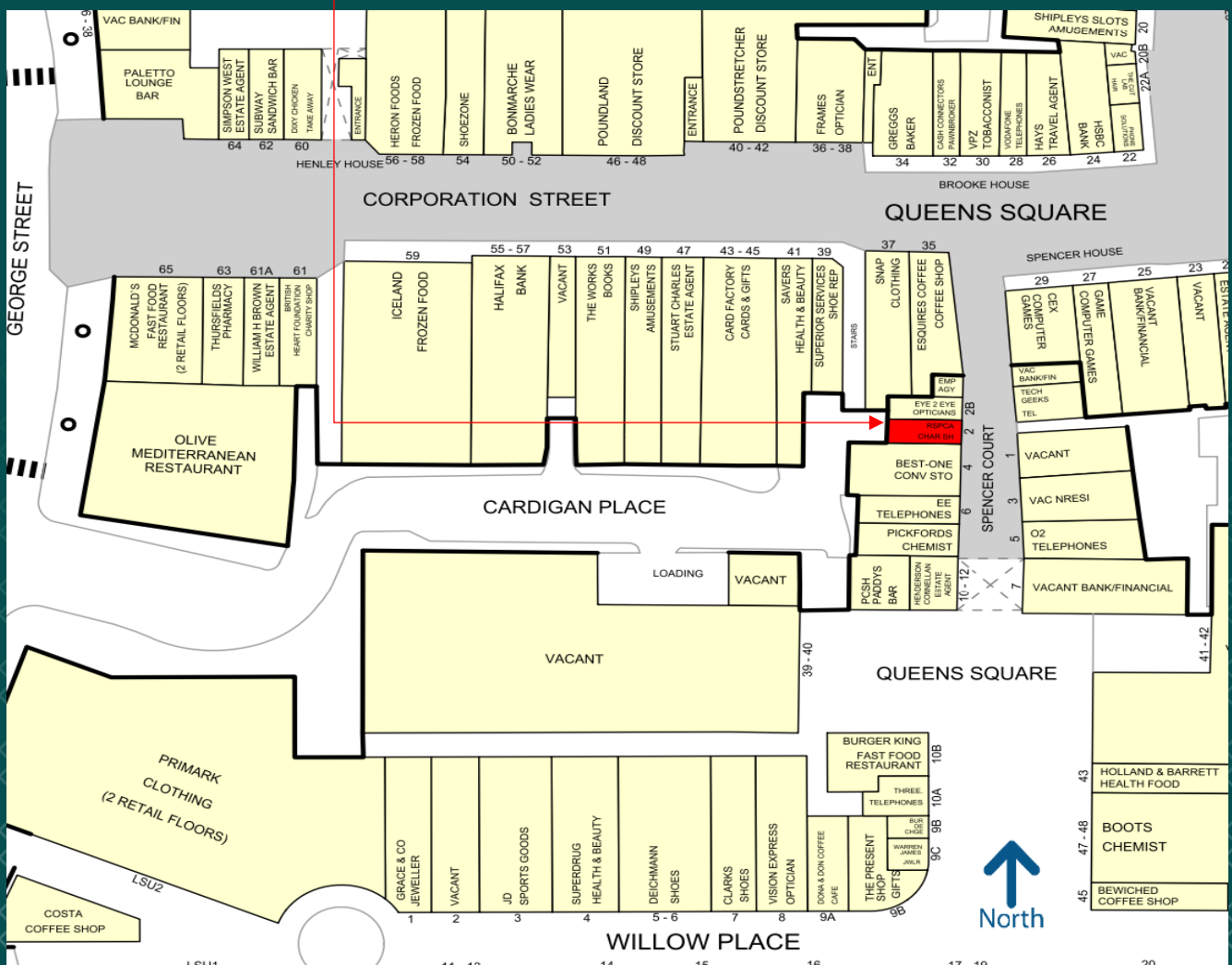
+44 (0) 7973 621 292

David.Legat@knightfrank.com

SUBJECT TO CONTRACT

Alternatively, please contact our Joint Agents at Wright Silverwood.

2 SPENCER COURT
CORBY, NN17 1NU



Important Notice: 1. Particulars: These particulars are not an offer or contract, nor part of one. You should not rely on statements by Knight Frank LLP in the particulars or by word of mouth or in writing ("information") as being factually accurate about the property, its condition or its value. Neither Knight Frank LLP, nor any joint agent has any authority to make any representations about the property, and accordingly any information given is entirely without responsibility on the part of the agents, seller(s) or lessor(s). 2. Photos etc: The photographs show only certain parts of the property as they appeared at the time they were taken. Areas, measurements and distances given are approximate only. 3. Regulations etc: Any reference to alterations to, or use of, any part of the property does not mean that any necessary planning, building regulations or other consent has been obtained. A buyer or lessee must find out by inspection or in other ways that these matters have been properly dealt with and that all information is correct. 4. VAT: The VAT position relating to the property may change without notice. Knight Frank LLP is a limited liability partnership registered in England with registered number OC305934. Our registered office is 55 Baker Street, London W1U 8AN, where you may look at a list of members' names. Particulars produced September 2024. Photos taken September 2024.