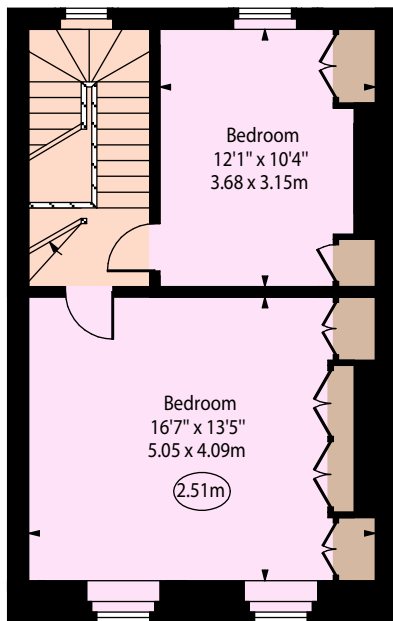
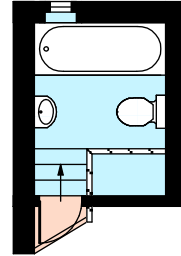
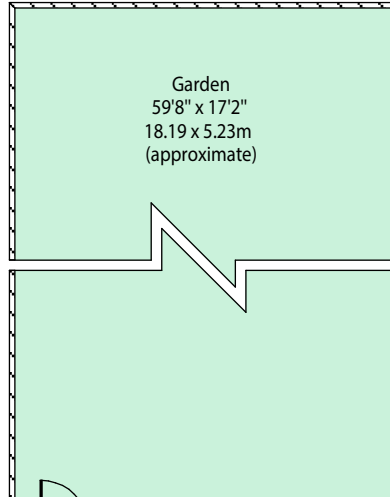


St Pauls Road, N1

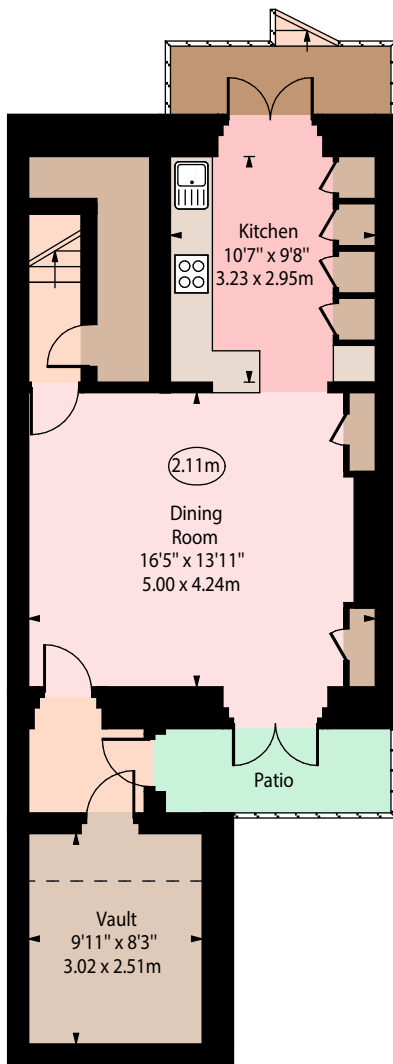
○ - Ceiling Height



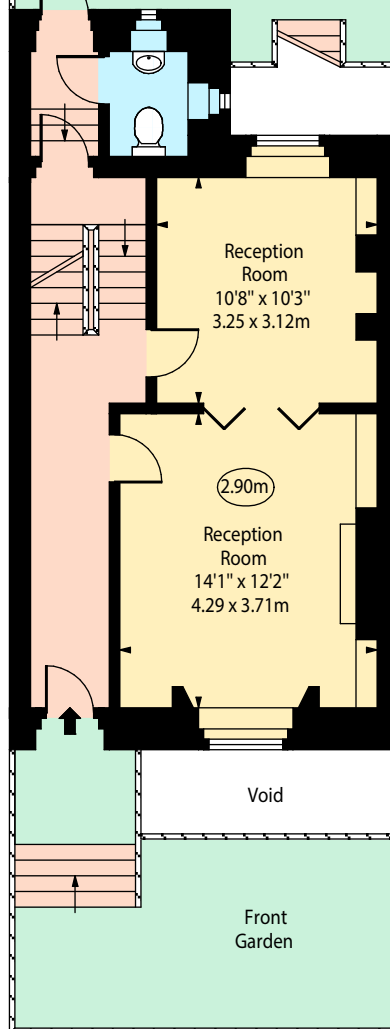
Second Floor



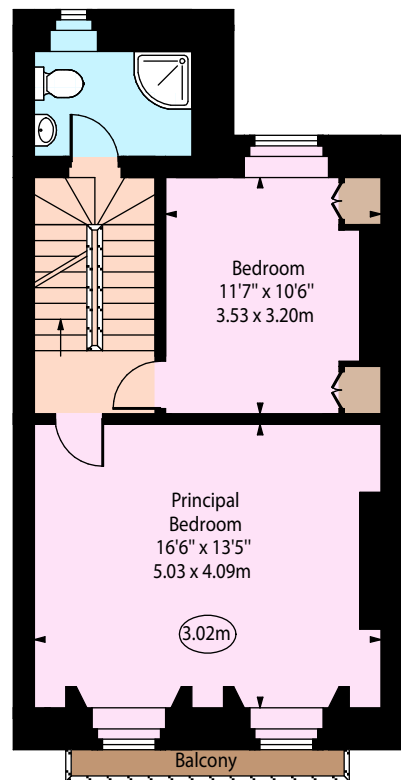
Second Floor Mezzanine



Lower Ground Floor



Ground Floor



First Floor

Approx Gross Internal Area 1885 Sq Ft - 175.12 Sq M
(Excluding Vault)

Approx Gross Internal Area 1970 Sq Ft - 183.01 Sq M
(Including Vault)

For Illustration Purposes Only - Not To Scale
www.goldlens.co.uk
Ref. No. 026523E