



Handyside Street, King's Cross, London **NIC**



Handyside Street, King's Cross **NIC**

An interior designed three bedroom duplex penthouse situated in the Plimsoll Building, spanning approximately 1,750 sq ft and benefiting from a magnificent 500 sq ft roof terrace.

Entered on the twelfth floor, you are met with an impressive double height floor-to-ceiling spiral staircase illuminating the entrance hall. This floor houses a generous double bedroom with en suite and built in storage, along with a guest WC and utility space.

Please note that we have been unable to confirm the date of the next review for service charge and ground rent. You should ensure that you or your advisors make your own inquiries.



Guide price: £2,950,000

Tenure: Leasehold: approximately 240 years remaining

Service charge: £18,230 per annum

Ground rent: £750 per annum

Local authority: London Borough of Camden

Council tax band: H



The staircase transcends up to the top floor, which comprises a large open plan kitchen and living area with a wall of glass connecting you to a huge balcony and roof terrace basking in sunlight with far-reaching city views.

The principal bedroom sits on the top floor with a walk-in dressing room and an impressive marble bathroom with a walk-in shower and a freestanding bathtub.

A third double bedroom sits of the lounge area, with access to the balcony and an en suite shower room.

Additional benefits include an underground parking space, access to the fitness suite, rooftop conservatory and a 24 hour concierge. There is also use of an exclusive elevator which serves the 'penthouse' levels at Plimsoll.

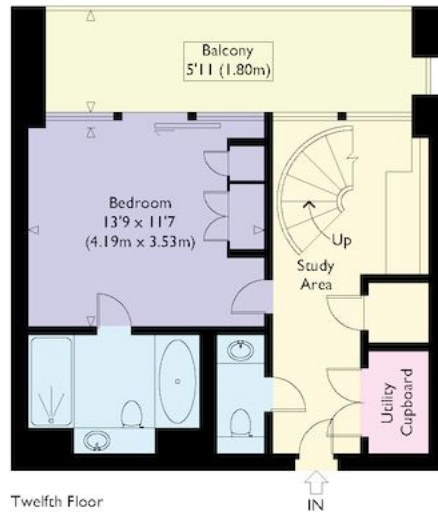
Location

The Plimsoll Building is located next to Gasholder 8, a brand new landscaped park, as well as Regents Canal. The Plimsoll Building is within close proximity to King's Cross St Pancras, which offers access to the Northern, Piccadilly, Victoria, Metropolitan, Circle, Hammersmith and City lines as well as National Rail and Eurostar from St. Pancras International.





Handyside Street, N1



Twelfth Floor



Thirteenth Floor

Approximate Gross Internal Floor Area 160.1 sq m / 1723 sq ft

This plan is for guidance only and must not be relied upon as a statement of fact. Attention is drawn to the important notice on the last page of the text of the Particulars.

Knight Frank

Islington & King's Cross

Sales

321-322 Upper Street

London N1 2XQ

[knightfrank.co.uk](https://www.knightfrank.co.uk)

I would be delighted to tell you more

Chelsea Whelan

+44 20 3910 9736

chelsea.whelan@knightfrank.com



Fixtures and fittings: A list of the fitted carpets, curtains, light fittings and other items fixed to the property which are included in the sale (or may be available by separate negotiation) will be provided by the Seller's Solicitors.

Important Notice: 1. Particulars: These particulars are not an offer or contract, nor part of one. You should not rely on statements by Knight Frank LLP in the particulars or by word of mouth or in writing ("information") as being factually accurate about the property, its condition or its value. Neither Knight Frank LLP nor any joint agent has any authority to make any representations about the property, and accordingly any information given is entirely without responsibility on the part of the agents, seller(s) or lessor(s). 2. Photos, Videos etc: The photographs, property videos and virtual viewings etc. show only certain parts of the property as they appeared at the time they were taken. Areas, measurements and distances given are approximate only. 3. Regulations etc: Any reference to alterations to, or use of, any part of the property does not mean that any necessary planning, building regulations or other consent has been obtained. A buyer or lessee must find out by inspection or in other ways that these matters have been properly dealt with and that all information is correct. 4. VAT: The VAT position relating to the property may change without notice. 5. To find out how we process Personal Data, please refer to our Group Privacy Statement and other notices at <https://www.knightfrank.com/legals/privacy-statement>.

Particulars dated March 2024. Photographs and videos dated February 2024.

Knight Frank is the trading name of Knight Frank LLP. Knight Frank LLP is a limited liability partnership registered in England and Wales with registered number OC305934. Our registered office is at 55 Baker Street, London W1U 8AN where you may look at a list of members' names. If we use the term 'partner' when referring to one of our representatives, that person will either be a member, employee, worker or consultant of Knight Frank LLP and not a partner in a partnership. If you do not want us to contact you further about our services then please contact us by either calling 020 3544 0692, email to marketing.help@knightfrank.com or post to our UK Residential Marketing Manager at our registered office (above) providing your name and address.