



Purley Place, Islington, London NI

---





# Purley Place, Islington, London **NI**

---

A collection of three new lateral three bedroom apartments within a converted warehouse in central Islington.

Arranged over one floor, these superb lateral apartments have an inviting and delightful feel with high ceilings and huge windows, exactly what you would expect from a loft apartment. Bedroom accommodation comprises superb principal suites with ample storage space, and a newly refurbished en suite shower room, with two further double bedrooms adjacent to a family bathroom.



**Prices from:** £1,500,000 - £1,600,000

**Tenure:** Share of freehold plus leasehold, approximately 999 years remaining

**Local authority:** London Borough of Islington

**Council tax band:** TBC



Each apartment is distinctive in their aesthetic in this part of London, the semi-industrial bones of this former warehouse have been transformed into well-considered apartments with warehouse proportions and features such as exposed brick and many original crittal framed windows.

The apartments are triple aspect, allowing natural light to pour in. The top two apartments offer far-reaching views across the city of London, and the ground floor benefits from incredibly tall ceilings and step-free access into the apartment.

The apartments each have three bedrooms and two bathrooms, with the ground floor having a different configuration, but they are united by the quality of light and materials that run throughout. Please see the floor plans for more detailed information.

There are two parking spaces available by separate negotiation, one with EV charging.

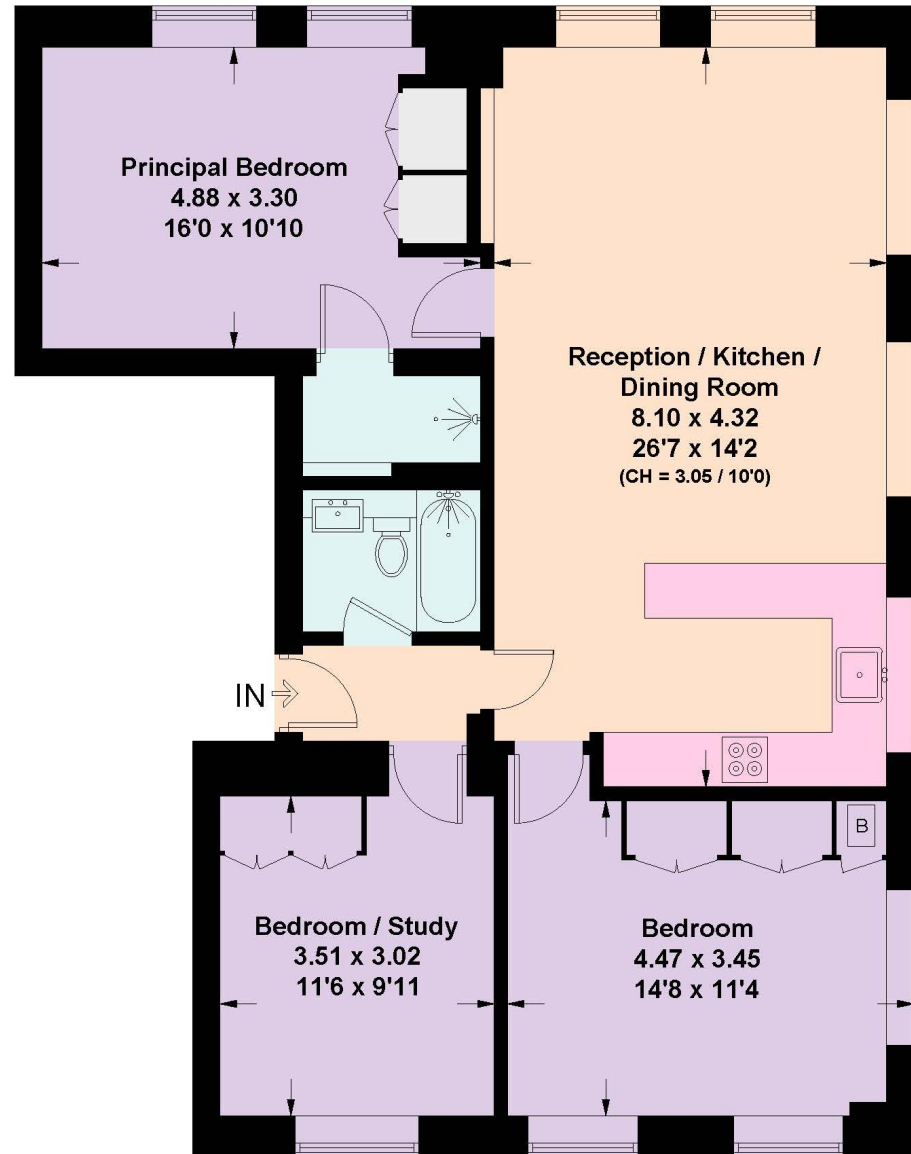
#### Location

Purley Place is an absolutely fantastic address, situated centrally amongst the hustle and bustle of the vibrancy of Upper Street, whilst retaining peace and tranquillity within the heart of Islington. The gastro pubs of the Albion and the Drapers Arms can be found locally within Barnsbury, with the supermarkets of Waitrose and Sainsbury's located at the Southern end of Liverpool Road, close to Angel. Highbury & Islington station (National Rail & Victoria Line) and Angel Underground (Northern Line) offer superb transport links to the City and across London.



# Purley Place, N1

Approximate Floor Area = 92.5 sq m / 996 sq ft  
Including Limited Use Area (5.0 sq m / 54 sq ft)




This plan is for guidance only and must not be relied upon as a statement of fact. Attention is drawn to the important notice on the last page of the text of the Particulars.

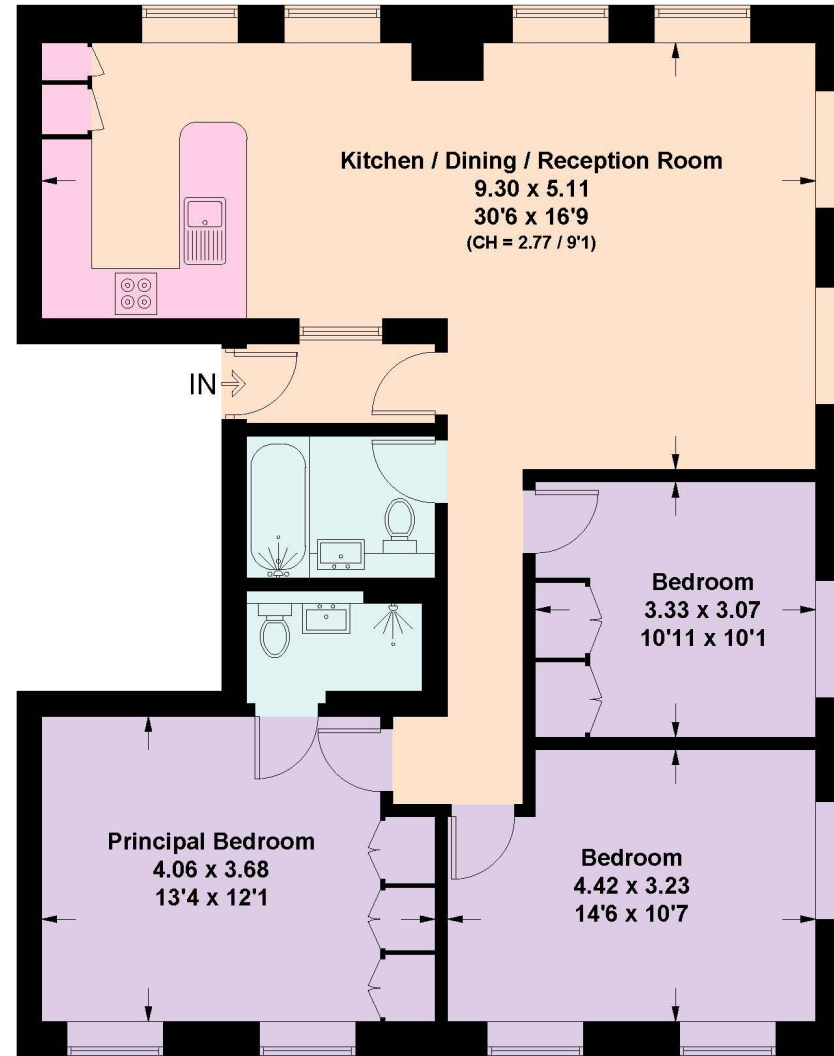
**Ground Floor**

# Purley Place, N1

Approximate Floor Area = 101.9 sq m / 1097 sq ft  
Including Limited Use Area (5.2 sq m / 56 sq ft)



 = Reduced head height below 1.5m



This plan is for guidance only and must not be relied upon as a statement of fact. Attention is drawn to the important notice on the last page of the text of the Particulars.

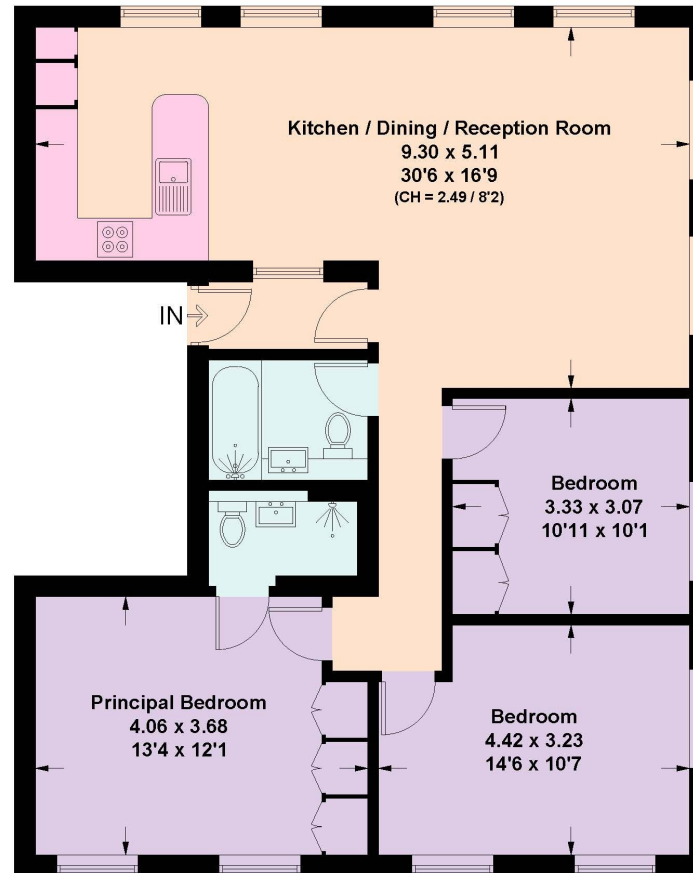
**First Floor**

## Purley Place, N1

Approximate Floor Area = 96.7 sq m / 1041 sq ft



This plan is for guidance only and must not be relied upon as a statement of fact. Attention is drawn to the important notice on the last page of the text of the Particulars.



### Second Floor

**Knight Frank**  
Islington & King's Cross

**Sales**  
321-322 Upper Street  
London N1 2XQ  
[knightfrank.co.uk](https://www.knightfrank.co.uk)

I would be delighted to tell you more

**Chelsea Whelan**  
+44 20 3910 9736  
[chelsea.whelan@knightfrank.com](mailto:chelsea.whelan@knightfrank.com)



Fixtures and fittings: A list of the fitted carpets, curtains, light fittings and other items fixed to the property which are included in the sale (or may be available by separate negotiation) will be provided by the Seller's Solicitors.

Important Notice: 1. Particulars: These particulars are not an offer or contract, nor part of one. You should not rely on statements by Knight Frank LLP in the particulars or by word of mouth or in writing ("information") as being factually accurate about the property, its condition or its value. Neither Knight Frank LLP nor any joint agent has any authority to make any representations about the property, and accordingly any information given is entirely without responsibility on the part of the agents, seller(s) or lessor(s). 2. Photos, Videos etc: The photographs, property videos and virtual viewings etc. show only certain parts of the property as they appeared at the time they were taken. Areas, measurements and distances given are approximate only. 3. Regulations etc: Any reference to alterations to, or use of, any part of the property does not mean that any necessary planning, building regulations or other consent has been obtained. A buyer or lessee must find out by inspection or in other ways that these matters have been properly dealt with and that all information is correct. 4. VAT: The VAT position relating to the property may change without notice. 5. To find out how we process Personal Data, please refer to our Group Privacy Statement and other notices at <https://www.knightfrank.com/legals/privacy-statement>.

Particulars dated April 2024. Photographs and videos dated April 2024.

Knight Frank is the trading name of Knight Frank LLP. Knight Frank LLP is a limited liability partnership registered in England and Wales with registered number OC305934. Our registered office is at 55 Baker Street, London W1U 8AN where you may look at a list of members' names. If we use the term 'partner' when referring to one of our representatives, that person will either be a member, employee, worker or consultant of Knight Frank LLP and not a partner in a partnership. If you do not want us to contact you further about our services then please contact us by either calling 020 3544 0692, email to [marketing.help@knightfrank.com](mailto:marketing.help@knightfrank.com) or post to our UK Residential Marketing Manager at our registered office (above) providing your name and address.