

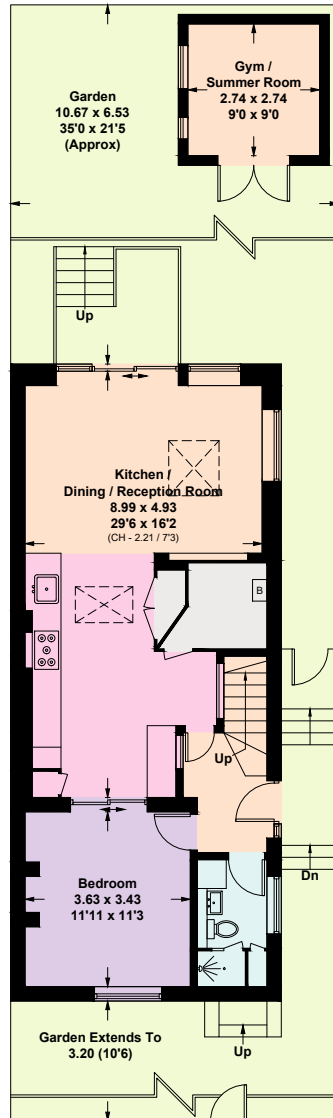
Ecclesbourne Road, N1

Approximate Floor Area = 169.2 sq m / 1822 sq ft (Excluding Void)

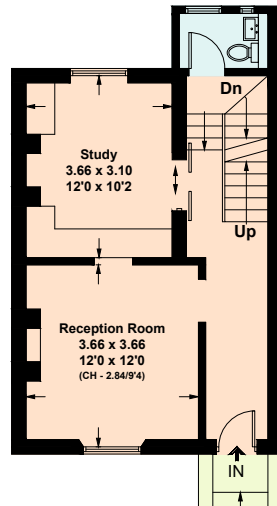
Gym / Summer Room = 7.6 sq m / 82 sq ft

Total = 176.8 sq m / 1904 sq ft

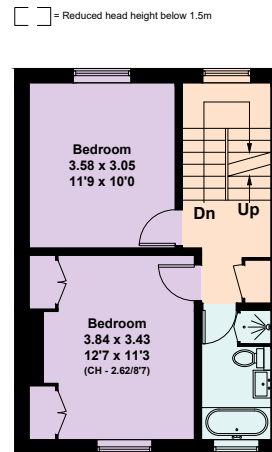
Including Limited Use Area (10.8 sq m / 116 sq ft)



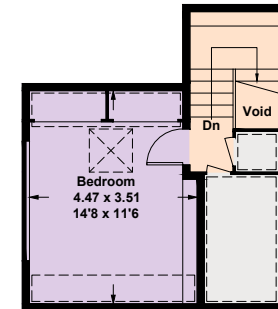
Lower Ground Floor



Ground Floor



First Floor



Second Floor

□ = Reduced head height below 1.5m

This plan is for layout guidance only. Not drawn to scale unless stated. Windows and door openings are approximate. Whilst every care is taken in the preparation of this plan, please check all dimensions, shapes and compass bearings before making any decisions reliant upon them. (ID1191267)