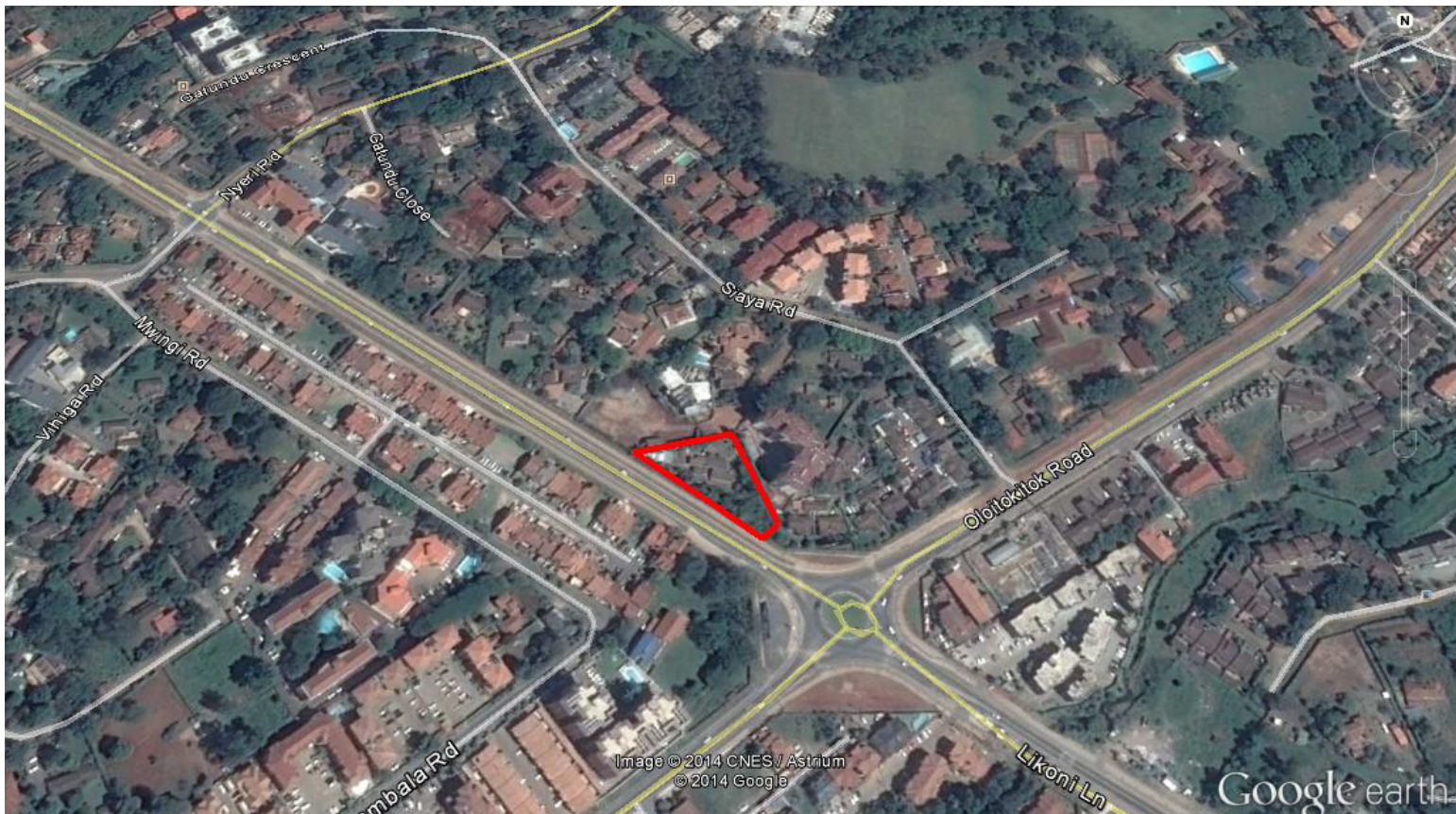


FOR SALE PRIME REDEVELOPMENT OPPORTUNITY

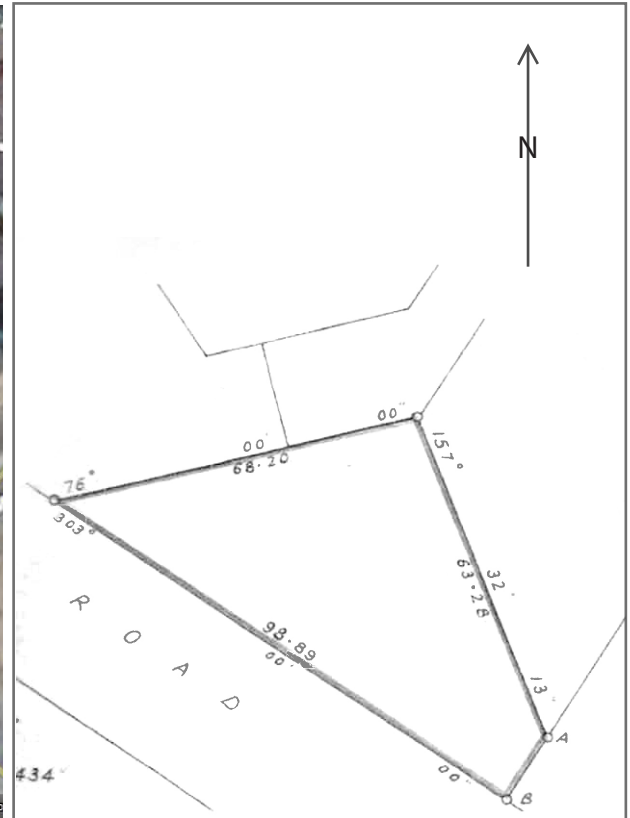
Kileleshwa, Nairobi



Location map: courtesy of Google Maps

Summary

- A redevelopment plot in the up market Kileleshwa area of Nairobi with excellent development potential.
- A 0.7 acre (0.2826 ha) redevelopment plot with a prominent frontage to Likoni Lane and with access from Siaya Road.
- The plot presently comprises a residential house and a semi-permanent structure.
- Currently zoned for residential development.
- Potential for a higher density residential development subject to planning approvals.
- A leasehold title with a remaining term of 56 years.
- For sale by private treaty.
- Viewing by appointment only.



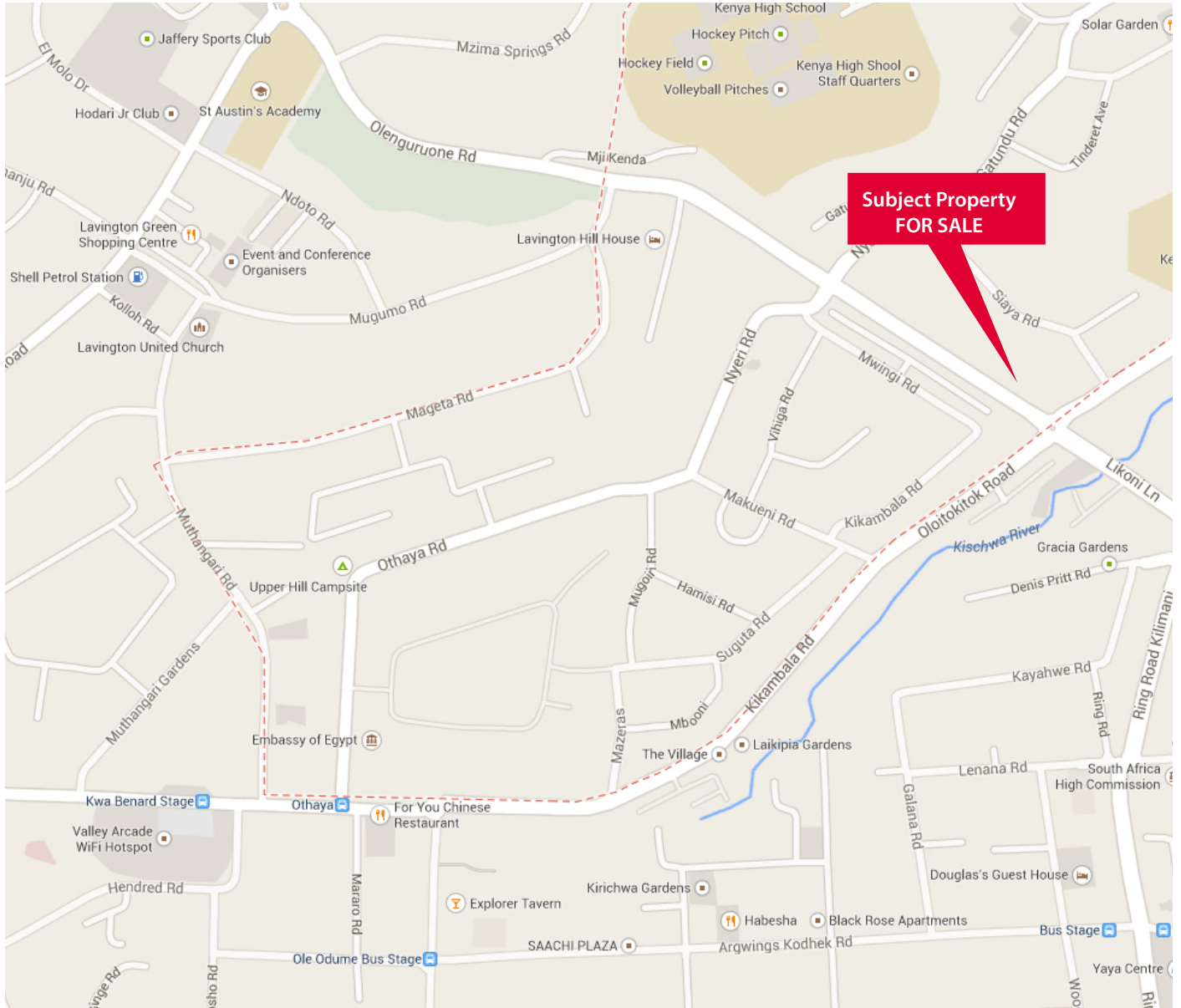
Location

The property is situated in Kileleshwa, an up market residential area of Nairobi, approximately 4 kilometres from the City Centre and approximately 2 kilometres from Westlands shopping centre. This is a corner plot with access from Siaya Road and with a prominent frontage to Likoni Lane. Both roads are tar surfaced. Kileleshwa is designated in Nairobi's City Council zone 4 with a proposed plot ratio of 100% in the proposed planning regulations.

The surrounding road network has been significantly improved with the recent completion of interlinks that make the property easily accessible through Dennis Pritt Road and James Gichuru Road

Description

An almost triangular red soil redevelopment plot on a leasehold title which comprises a double storey house and a semi-permanent structure



Location map: courtesy fo Google Maps

For further information and viewing arrangements please contact one of the following;

Contacts

- **Sally:** +254 732 942 229
- **Kelvin:** +254 731 296 271

Viewings are strictly by appointments

Important notice

1. Particulars: These particulars are not an offer or contract, nor part of one. You should not rely on statements by Knight Frank Kenya Limited in the particulars or by word of mouth or in writing ("information") as being factually accurate about the property, its condition or its value. Neither Knight Frank Kenya Limited nor any joint agent has any authority to make any representations about the property, and accordingly any information given is entirely without responsibility on the part of the agents, seller(s) or lessor(s).
2. Photos etc: The photographs show only certain parts of the property as they appeared at the time they were taken. Areas, measurements and distances given are approximate only.
3. Regulations etc: Any reference to alterations to, or use of, any part of the property does not mean that any necessary planning, building regulations or other consent has been obtained. A buyer or lessee must find out by inspection or in other ways that these matters have been properly dealt with and that all information is correct.
4. Neither Knight Frank Kenya Limited nor the vendor of the property accepts responsibility for any error these particulars may contain however caused. Any intending purchaser must therefore satisfy himself by inspection or otherwise as to the correctness.
5. Terms and conditions for the tender apply.