

Wynnstay Gardens, Kensington W8





A beautifully light apartment of generous proportions in a secure portered block. Accommodation extends to 1786 sq ft and comprises of 4 bedrooms, 3 bathrooms, modern fitted kitchen and 2 reception rooms with bay windows.

There is excellent ceiling height throughout and direct access to communal gardens. The apartment has been completed to a high standard throughout and therefore benefits from premium appliances and finishes.

Wynnstay Gardens is a secure and popular location with a day Porter between 9am - 3:30pm.

Share of freehold

The Royal Borough of Kensington & Chelsea

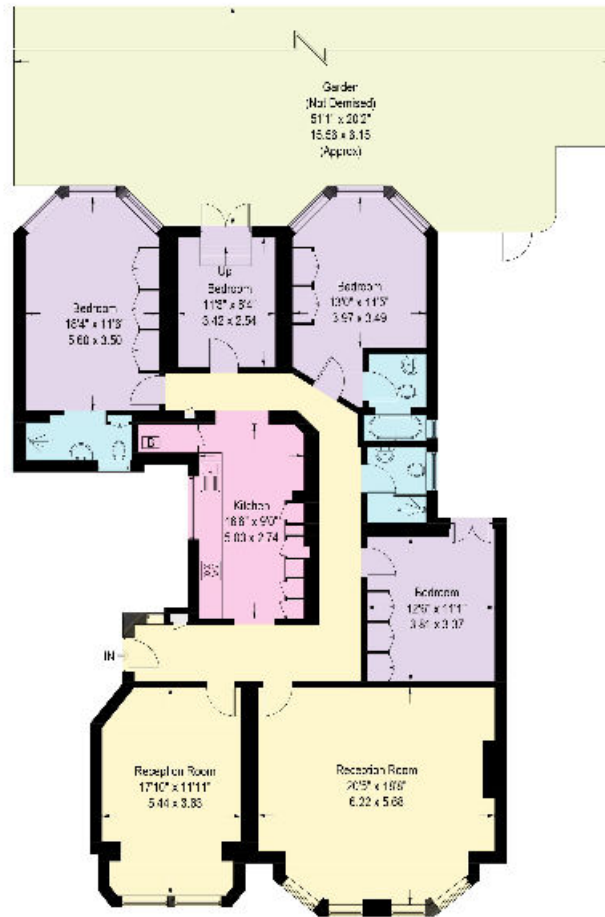


Wynnstay Gardens is located just off Allen Street which runs south off Kensington High Street, where there is a wide selection of shops, restaurants and transport connections. It is moments from the wide open spaces of Holland Park and Kensington Gardens.



Wynnstay Gardens, W8

Approximate Gross Internal Area = 1786 sq ft / 165.3 sq m



Ground Floor

Knight Frank
Kensington
52-56 Kensington
Church Street
London W8 4DB

[knightfrank.co.uk](https://www.knightfrank.co.uk)

We would be delighted to tell you more.

Kensington
020 7938 4311
kensington@knightfrank.com



Connecting people & property, perfectly.

Fixtures and fittings: A list of the fitted carpets, curtains, light fittings and other items fixed to the property which are included in the sale (or may be available by separate negotiation) will be provided by the Seller's Solicitors.

Important Notice: 1. Particulars: These particulars are not an offer or contract, nor part of one. You should not rely on statements by Knight Frank LLP in the particulars or by word of mouth or in writing ("information") as being factually accurate about the property, its condition or its value. Neither Knight Frank LLP nor any joint agent has any authority to make any representations about the property, and accordingly any information given is entirely without responsibility on the part of the agents, seller(s) or lessor(s). 2. Photos, Videos etc: The photographs, property videos and virtual viewings etc. show only certain parts of the property as they appeared at the time they were taken. Areas, measurements and distances given are approximate only. 3. Regulations etc: Any reference to alterations to, or use of, any part of the property does not mean that any necessary planning, building regulations or other consent has been obtained. A buyer or lessee must find out by inspection or in other ways that these matters have been properly dealt with and that all information is correct. 4. VAT: The VAT position relating to the property may change without notice. 5. To find out how we process Personal Data, please refer to our Group Privacy Statement and other notices at <https://www.knightfrank.com/legals/privacy-statement>.

Particulars dated August 2020. Photographs and videos dated August 2020.

Knight Frank is the trading name of Knight Frank LLP. Knight Frank LLP is a limited liability partnership registered in England and Wales with registered number OC305934. Our registered office is at 55 Baker Street, London W1U 8AN where you may look at a list of members' names. If we use the term 'partner' when referring to one of our representatives, that person will either be a member, employee, worker or consultant of Knight Frank LLP and not a partner in a partnership. If you do not want us to contact you further about our services then please contact us by either calling 020 3544 0692, email to marketing.help@knightfrank.com or post to our UK Residential Marketing Manager at our registered office (above) providing your name and address.