

Hans Place
Knightsbridge
SWIX





A beautiful bright and spacious third and fourth floor duplex apartment (with direct lift access) in the heart of Knightsbridge. The property comprises of spacious principal bedroom with dressing room and en suite bathroom, three further bedrooms with en suites, study, large reception room, dining room, kitchen, breakfast room, utility room, shower room and guest cloakroom.



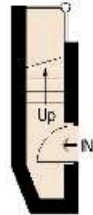
Guide price
£1,950 per week
Available for long let, part furnished.

The property is in the heart of Knightsbridge, close to the international designer shops and restaurants of Sloane Street and Knightsbridge and the lovely boutiques on Beauchamp Place, Harvey Nichols and the famous Harrods. The world famous One Hyde Park residential development is at this location. This prime location is also within easy walking distance to the wide open spaces of Hyde Park. Both the V&A and the Science Museum are easily accessed as well as Imperial College.

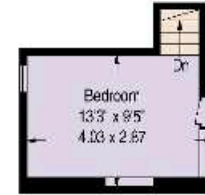


**Approximate Gross Internal Floor Area#
216,7 sq m/2333 sq ft**

This plan is for guidance only and must not be relied upon as a statement of fact. Attention is drawn to the Important Notice on the last page of the text of the Particulars



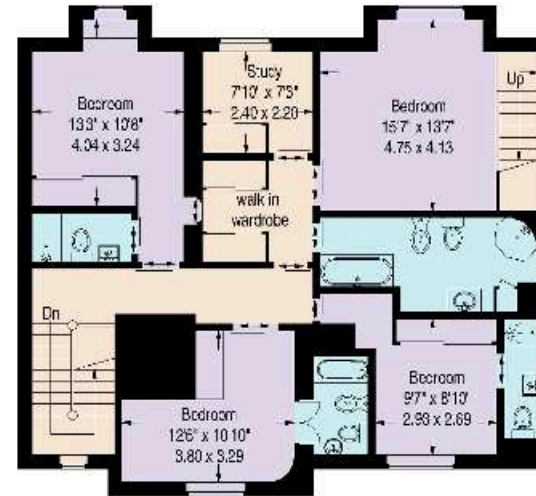
Second Floor



Mezzanine



Third Floor



Fourth Floor

Knight Frank
Knightsbridge
52-54 Sloane Avenue
Knightsbridge SW3 3DD

We would be delighted to tell you more.

Arya Salari,
020 7349 4310
arya.salari@knightfrank.com

knightfrank.co.uk



Your partners in property for 125 years

Fixtures and fittings: A list of the fitted carpets, curtains, light fittings and other items fixed to the property which are included in the sale (or may be available by separate negotiation) will be provided by the Seller's Solicitors.

Important Notice: 1. Particulars: These particulars are not an offer or contract, nor part of one. You should not rely on statements by Knight Frank LLP in the particulars or by word of mouth or in writing ("information") as being factually accurate about the property, its condition or its value. Neither Knight Frank LLP nor any joint agent has any authority to make any representations about the property, and accordingly any information given is entirely without responsibility on the part of the agents, seller(s) or lessor(s). 2. Photos, Videos etc: The photographs, property videos and virtual viewings etc. show only certain parts of the property as they appeared at the time they were taken. Areas, measurements and distances given are approximate only. 3. Regulations etc: Any reference to alterations to, or use of, any part of the property does not mean that any necessary planning, building regulations or other consent has been obtained. A buyer or lessee must find out by inspection or in other ways that these matters have been properly dealt with and that all information is correct. 4. VAT: The VAT position relating to the property may change without notice. 5. To find out how we process Personal Data, please refer to our Group Privacy Statement and other notices at <https://www.knightfrank.com/legals/privacy-statement>.

Particulars dated [xxxxxxxx 20xx], Photographs and videos dated [xxxxxxxx 20xx].

Knight Frank is the trading name of Knight Frank LLP. Knight Frank LLP is a limited liability partnership registered in England and Wales with registered number OC305934. Our registered office is at 55 Baker Street, London W1U 8AN where you may look at a list of members' names. If we use the term 'partner' when referring to one of our representatives, that person will either be a member, employee, worker or consultant of Knight Frank LLP and not a partner in a partnership. If you do not want us to contact you further about our services then please contact us by either calling 020 3544 0692, email to marketing.help@knightfrank.com or post to our UK Residential Marketing Manager at our registered office (above) providing your name and address.