



## 29 Montpelier Place, London SW7 1HW

An immaculately presented house offering generous reception space and storage throughout, with beautiful reclaimed wood flooring, sauna and the added benefit of two private terraces. Montpelier Place is located in Knightsbridge Village adjacent to Montpelier Street moments from the Brompton Road and the many amenities in Knightsbridge including Harrods and Harvey Nichols. Sloane Street is within easy reach and home to an abundance of flagship designer stores. The closest tube station is Knightsbridge (Piccadilly Line). The property has been refurbished and is finished to a high standard throughout. It comprises principal bedroom with en suite bathroom and fitted wardrobes, two further double bedrooms with fitted wardrobes, reception room, eat in kitchen which leads directly onto a paved garden, study, family bathroom, utility room, sauna and roof terrace. The property has wood flooring throughout (with the exception of the bathrooms and sauna).

**£1,650 pw / £7,150 pm Subject To Contract Long Let**

**Knight Frank Knightsbridge**

+442075918601

[knightsbridgelettings@knightfrank.com](mailto:knightsbridgelettings@knightfrank.com)

52-54 Sloane Avenue London SW3 3DD



#### Important Notice

Please note, neither Knight Frank LLP nor any joint agent has any authority to make any representations about the property. Knight Frank LLP accepts no responsibility for the contents of this brochure and the information within it should not be relied upon as statements of fact concerning the property, its condition or value. This brochure does not constitute, in whole or in part, an offer or contract. Any buyer, lessee or otherwise interested party must satisfy themselves through their own investigations, surveys, enquiries and inspections that the property is suitable for their purposes and that the information in this brochure accurately depicts the property. Knight Frank is the trading name of Knight Frank LLP. Knight Frank LLP is a limited liability partnership registered in England and Wales with registered number OC305934. Our registered office is at 55 Baker Street, London W1U 8AN where you may look at a list of members' names. If we use the term 'partner' when referring to one of our representatives, that person will either be a member, employee, worker or consultant of Knight Frank LLP and not a partner in a partnership.

If you do not want us to contact you further about our services then please contact us by either calling 020 3544 0692, email to [marketing.help@knightfrank.com](mailto:marketing.help@knightfrank.com) or post to our UK Residential Marketing Manager at our registered office (above) providing your name and address.



[knightfrank.co.uk](https://www.knightfrank.co.uk)  
Connecting people & property, perfectly.

## Fees and Charges

Upfront payments/fees for letting this property, if it is an AST letting, consist only of the rent, tenancy deposit and any agreed holding deposit (if applicable). For a list of administrative payments and fees applicable to all other lettings, please contact us for further information.

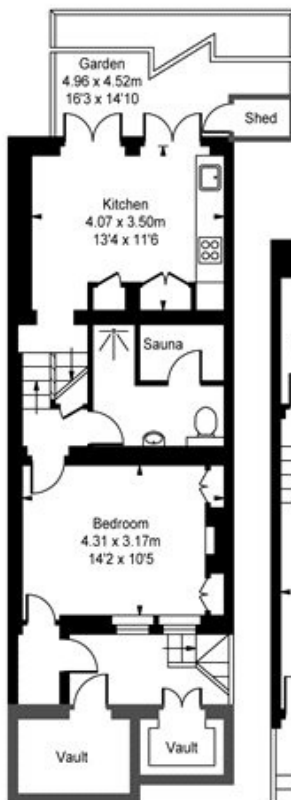
### Disclaimer

These particulars have been produced as a general guide for this property only and no other purpose. They are not an offer or contract. You should not rely on statements in these particulars or by word of mouth or in writing as being factually accurate about the property, its condition or its value. Neither any primary agent or joint agent has any authority to make or give any representations or warranties in relation to the property, and accordingly any information given is entirely without responsibility on the part of the agents or lessor(s).

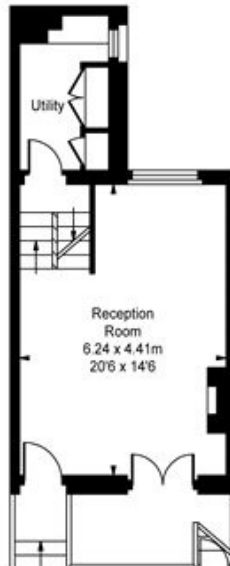
The photographs show only certain parts of the property as they appeared at the time they were taken. Any areas, measurements and distances given are approximate only. Any reference to alterations to, or use of, any part of the property does not mean that any necessary planning, building regulations or other consent has been obtained nor have any services, equipment or facilities been tested. A lessee should satisfy themselves by inspection or otherwise. The VAT position relating to the property may change without notice. Please contact us for further information regarding the approved Client Money Protection (CMP) scheme and the property redress scheme which we are a member of.

Montpelier Place, SW7 1HW

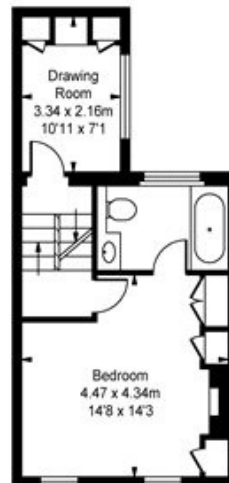
Approximate Gross Internal Area  
1446 sq ft / 134.34 sq m  
(Not Including Vaults)



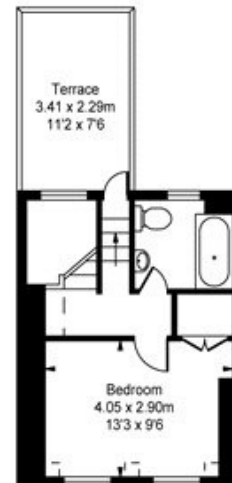
Lower Ground Floor  
Approximate Gross Internal Area  
471 sq ft / 43.76 sq m



Ground Floor  
Approximate Gross Internal Area  
365 sq ft / 33.91 sq m



First Floor  
Approximate Gross Internal Area  
375 sq ft / 34.84 sq m



Second Floor  
Approximate Gross Internal Area  
235 sq ft / 21.83 sq m

## Energy Efficiency Rating

	Current	Potential
<i>Very energy efficient - lower running costs</i>		
(92+) <b>A</b>		
(81-91) <b>B</b>		<b>85</b>
(69-80) <b>C</b>		
(55-68) <b>D</b>	<b>65</b>	
(39-54) <b>E</b>		
(21-38) <b>F</b>		
(1-20) <b>G</b>		
<i>Not energy efficient - higher running costs</i>		
<b>England, Scotland &amp; Wales</b>	EU Directive 2002/91/EC	