



Hans Crescent,
Knightsbridge

SWIX





A beautifully presented two bedroom flat to rent in the heart of Knightsbridge. The apartment is located in a prestigious portered block, close to Harrods, offering exceptional lateral space, the flat is ideally located close to the shops and restaurants of Knightsbridge and Sloane Street and the wide open spaces of Hyde Park. The apartment comprises 2 bedrooms both with fitted wardrobes, 2 bathrooms, spacious reception room, kitchen, air cooling system and residents benefit from access to lift and 24 hour concierge. Parking is available by separate negotiation. Approximately 94 sq m (1,011 sq ft).

Guide price
£2,250 per week

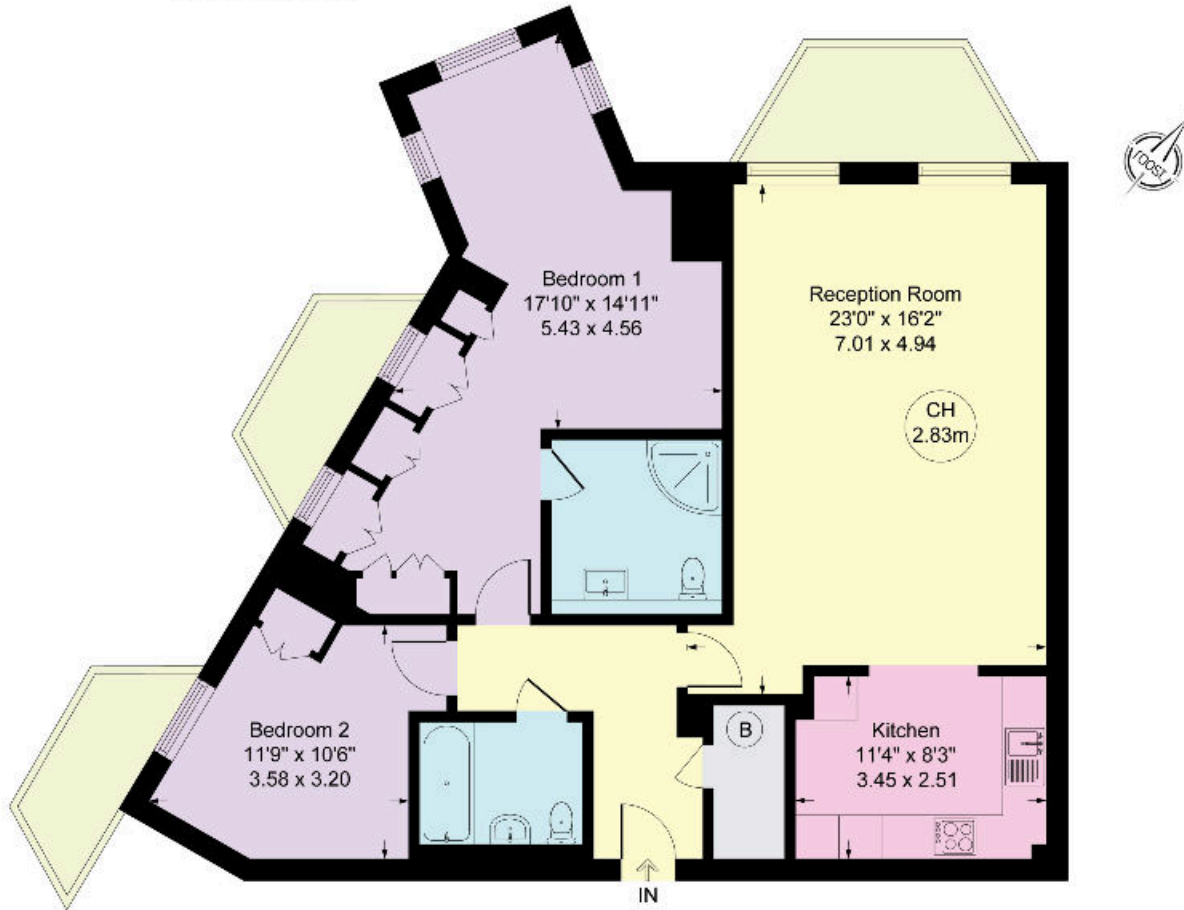
Available for a long let, furnished



This prime location is also within easy walking distance to the wide-open spaces of Hyde Park. Both the V&A and the Science Museum are easily accessed as well as Imperial College. Well known Hotels in this area include the Mandarin Oriental, The Berkeley and Jumeirah Carlton Tower. A short walk to both Knightsbridge underground station (Piccadilly line) and Sloane Square underground station (District and Circle lines).



CH = Ceiling Height



**Approximate Gross Internal Floor Area
100.98 sq m/1,087 sq ft**

This plan is for guidance only and must not be relied upon as a statement of fact. Attention is drawn to the Important Notice on the last page of the text of the Particulars

Third Floor

Knight Frank
Knightsbridge
52-54 Sloane Avenue
Knightsbridge SW3 3DD

We would be delighted to tell you more.

Laura Heron

laura.heron@knightfrank.com

knightfrank.co.uk



Connecting people & property, perfectly.

Fixtures and fittings: A list of the fitted carpets, curtains, light fittings and other items fixed to the property which are included in the sale (or may be available by separate negotiation) will be provided by the Seller's Solicitors.

Important Notice: 1. Particulars: These particulars are not an offer or contract, nor part of one. You should not rely on statements by Knight Frank LLP in the particulars or by word of mouth or in writing ("information") as being factually accurate about the property, its condition or its value. Neither Knight Frank LLP nor any joint agent has any authority to make any representations about the property, and accordingly any information given is entirely without responsibility on the part of the agents, seller(s) or lessor(s). 2. Photos, Videos etc: The photographs, property videos and virtual viewings etc. show only certain parts of the property as they appeared at the time they were taken. Areas, measurements and distances given are approximate only. 3. Regulations etc: Any reference to alterations to, or use of, any part of the property does not mean that any necessary planning, building regulations or other consent has been obtained. A buyer or lessee must find out by inspection or in other ways that these matters have been properly dealt with and that all information is correct. 4. VAT: The VAT position relating to the property may change without notice. 5. To find out how we process Personal Data, please refer to our Group Privacy Statement and other notices at <https://www.knightfrank.com/legals/privacy-statement>.

Particulars dated [xxxxxxxx 20xx], Photographs and videos dated [xxxxxxxx 20xx].

Knight Frank is the trading name of Knight Frank LLP. Knight Frank LLP is a limited liability partnership registered in England and Wales with registered number OC305934. Our registered office is at 55 Baker Street, London W1U 8AN where you may look at a list of members' names. If we use the term 'partner' when referring to one of our representatives, that person will either be a member, employee, worker or consultant of Knight Frank LLP and not a partner in a partnership. If you do not want us to contact you further about our services then please contact us by either calling 020 3544 0692, email to marketing.help@knightfrank.com or post to our UK Residential Marketing Manager at our registered office (above) providing your name and address.