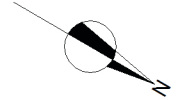


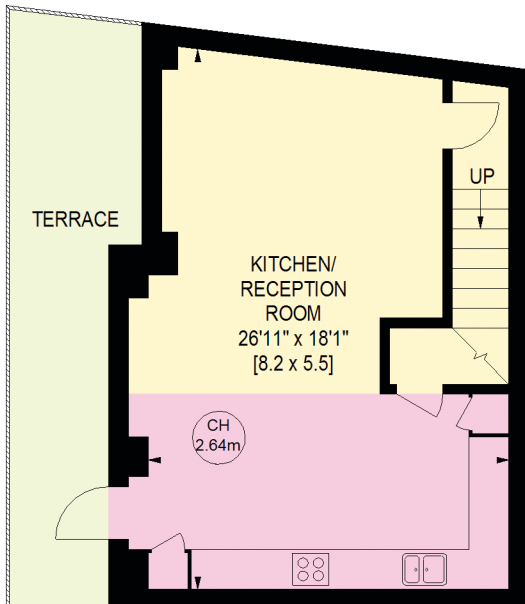
FLAT 6D, MYERS COURT, SW4

Approximate Gross Internal Area : 126.1 Sq. metres
1357 Sq. feet

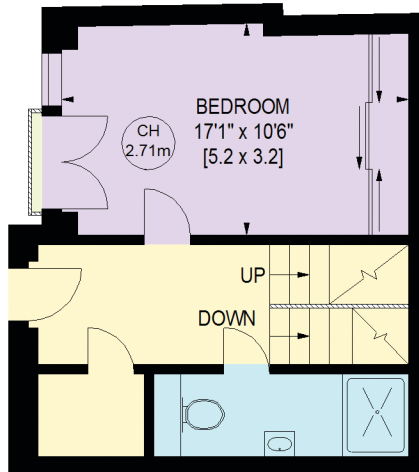
Total Area : 155.7 Sq. metres
(Including Terraces) 1676 Sq. feet



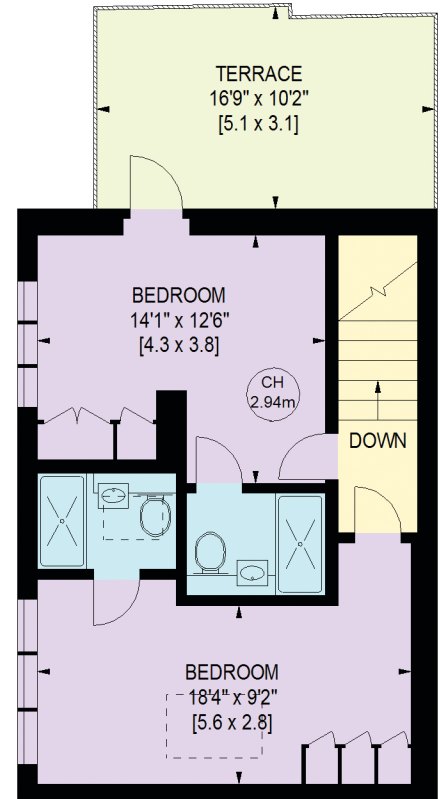
Key :
CH - Ceiling Height



LOWER GROUND FLOOR



GROUND FLOOR



FIRST FLOOR

Illustration for identification purposes only, not to scale.
All measurements and areas are approximate, and include wardrobes and window bays where appropriate.
This Floorplan has been prepared in accordance with the current edition of the RICS code of measuring practice.