

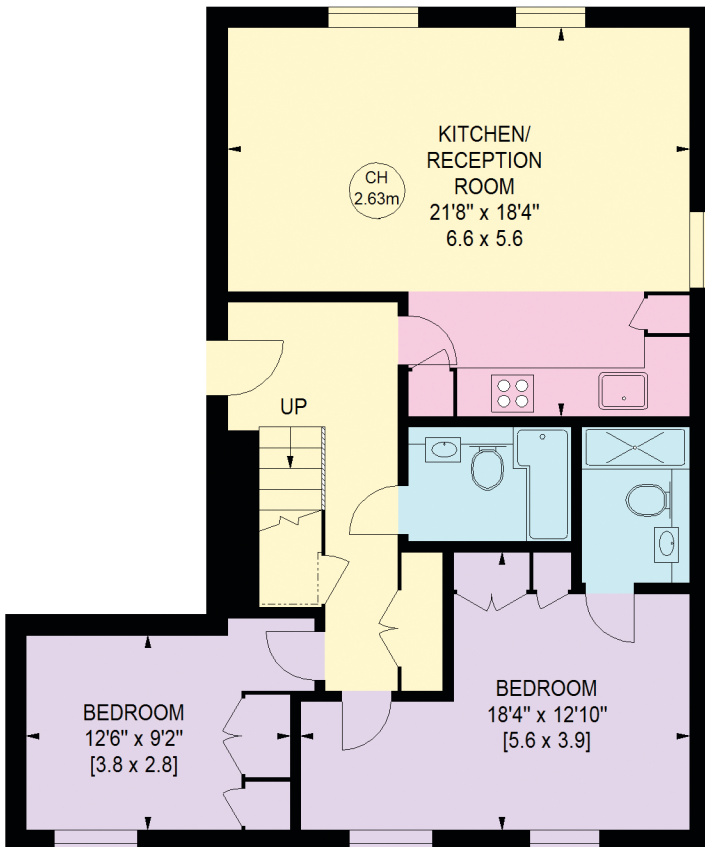
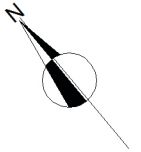
FLAT 11, MYERS COURT, SW4

Approximate Gross Internal Area : **126.1 Sq. metres**
(Excluding Eaves Storages) **1357 Sq. feet**

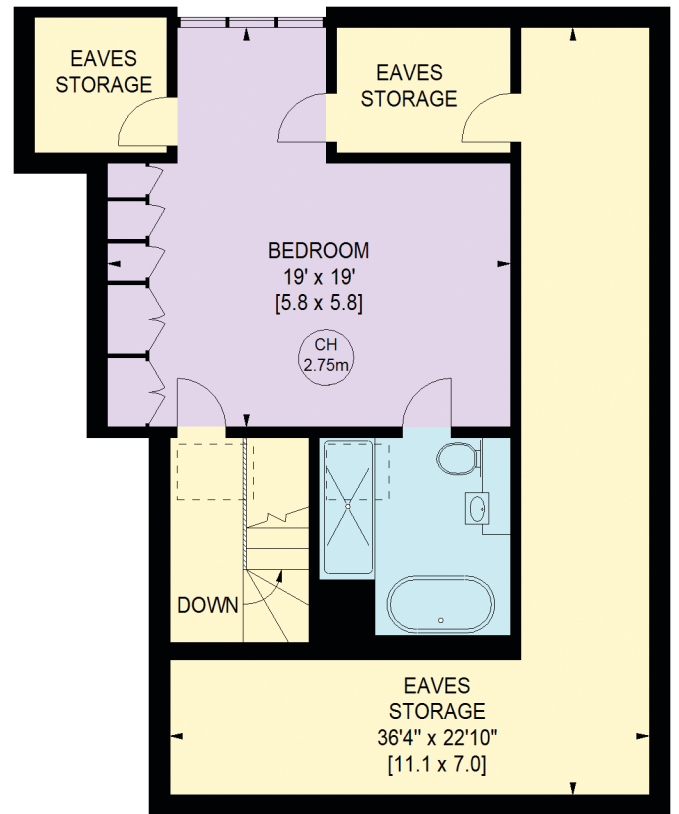
Total Area : **168.5 Sq. metres**
(Including Restricted Height & Eaves Storages) **1814 Sq. feet**

Key :
CH - Ceiling Height

[Dashed Box] Under 1.5m head height



THIRD FLOOR



FOURTH FLOOR

Illustration for identification purposes only, not to scale.
All measurements and areas are approximate, and include wardrobes and window bays where appropriate.
This Floorplan has been prepared in accordance with the current edition of the RICS code of measuring practice.