



THE AURIA

NOTTING HILL

The Apartments at
Athlone & Faraday
Mansions



A
THE AURIA
NOTTING HILL

Enjoy stylish apartment living at The Auria, the next exciting phase in the journey at Portobello Square, the multi-award-winning development in fashionable Notting Hill.

Designed by internationally-acclaimed architects, Conran and Partners, the collection of 1 and 2 bedroom apartments are set within two architecturally distinctive mansion buildings with many of the homes overlooking the iconic Portobello Road, or Athlone Gardens – the large park at the heart of the development.

These modern light-filled apartments reveal spacious, flexible living spaces and every home includes either a terrace, balcony or courtyard garden providing much-valued private outdoor space.

Portobello
Square



“Inspired by the grandeur of the mansion block, such as Albert Hall Mansions which circle Kensington’s Royal Albert Hall, the apartments create a contemporary design of classic proportions with a feeling of calm splendour and a strong sense of arrival.”

Victoria Whenray,
Partner at Conran and Partners

← View of Athlone Mansions on the corner of Portobello Road and Athlone Gardens showing apartments overlooking the park.

A closer look

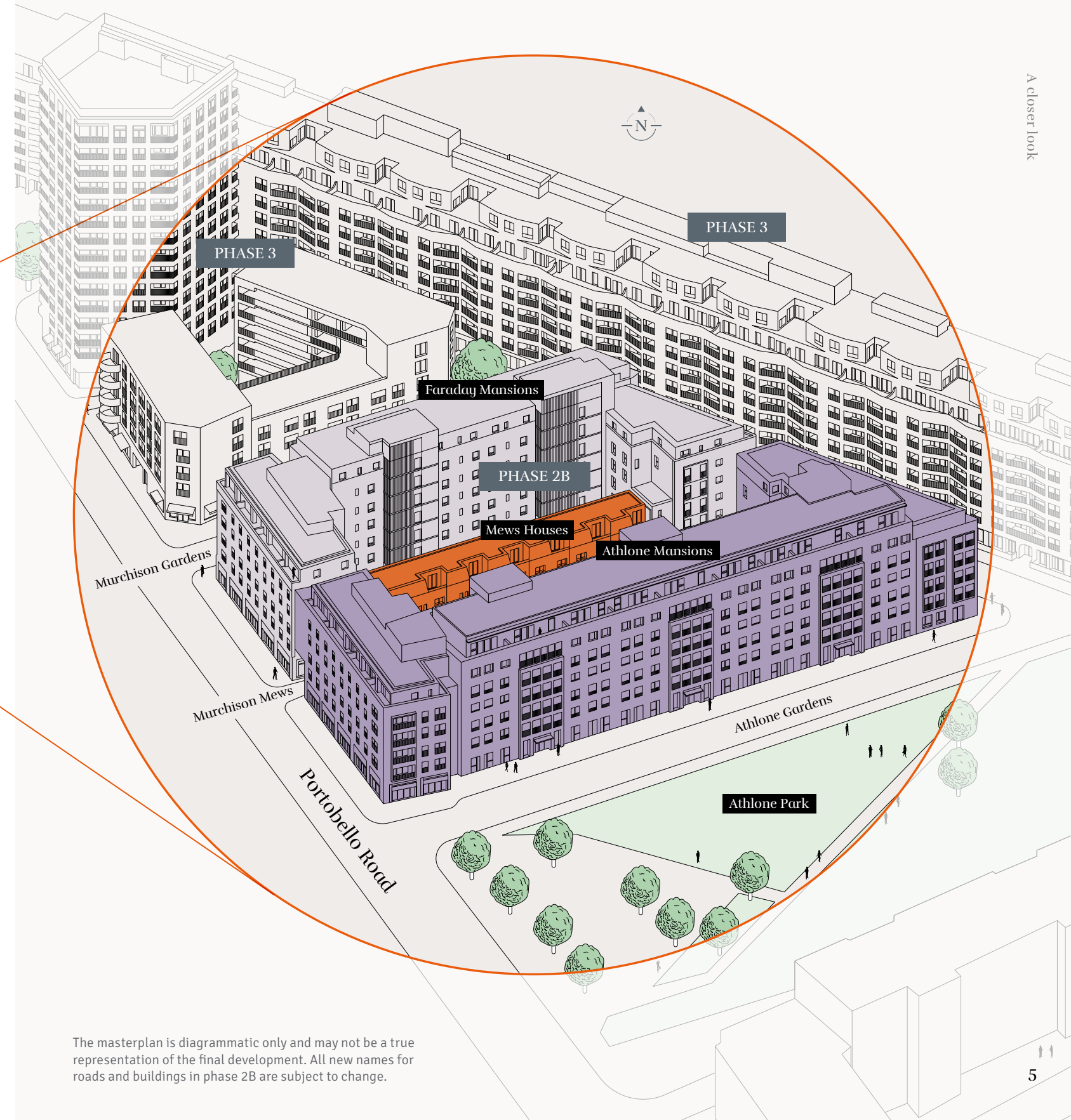
This prestigious development is divided into three distinct phases with The Auria forming the second part of phase 2.



Athlone and Faraday Mansions are the two buildings in this next phase collectively offering 100 apartments for sale. Both mansion buildings face the iconic Portobello Road at their westerly point and many of the apartments at Athlone Mansions overlook the park.

Phase 1 and the first part of phase 2 are now complete. The collection of mews houses, townhouses and four mansion blocks built within these phases are already well established in the wider neighbourhood and have created a thriving place to live.

Phase 3 will mark the final chapter and the overall completion of Portobello Square.



The masterplan is diagrammatic only and may not be a true representation of the final development. All new names for roads and buildings in phase 2B are subject to change.

Homes to impress

The Auria presents exceptional light-filled apartments; expertly designed for modern living. The flexible interior spaces and neutral décor provide the blank canvas to apply your own style to create your perfect home.



Going green

Green living features prominently at The Auria with a strong and impressive sustainability ethos at its heart. All homes boast water and energy saving features and methods to reduce waste and pollution are engaged across the wider development. The importance of private outside space is also reflected in all homes featuring either a balcony, terrace or garden.



Dine in style

The sophisticated and streamlined kitchens feature designer units from the Linear Avant range with cupboard doors and drawers displaying a gentle chamfered top edge for a contemporary look. Quality appliances are from the Neff range and include oven, induction hob, fridge freezer, microwave, dishwasher and washer/dryer. Sleek Silestone worktops and chrome taps complete the look.



Indulgent spaces

Bathrooms and en suites offer beautifully designed and feel-good settings. The exceptional finish includes floor and wall tiles in a choice of four calming shades and white sanitaryware by Ideal Standard with fitted glass shower screens to baths and sliding versions to walk-in showers. Add to this premium chrome taps and fittings by Hansgrohe and heated towel rails for an overall indulgent feel.

TOP PICKS

1

Pop up worktop sockets
Stylish plug sockets offer great space-saving solutions.

2

Nest Protect smart alarm system
Feel safe at home with this technologically advanced smoke alarm and carbon monoxide sensor.

3

Entrotec audio/video receiver
Advanced door entry system with video added for extra security.

4

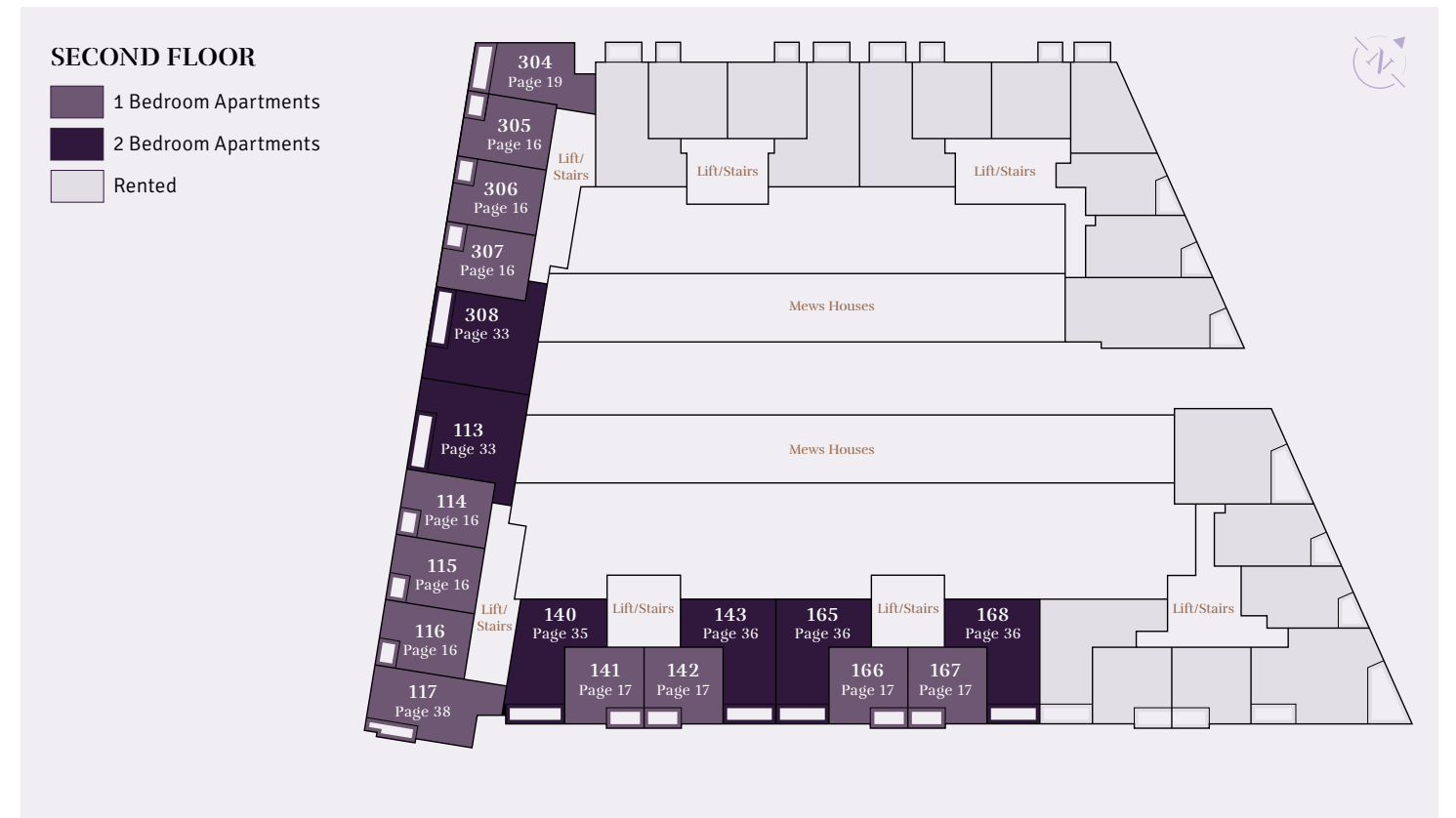
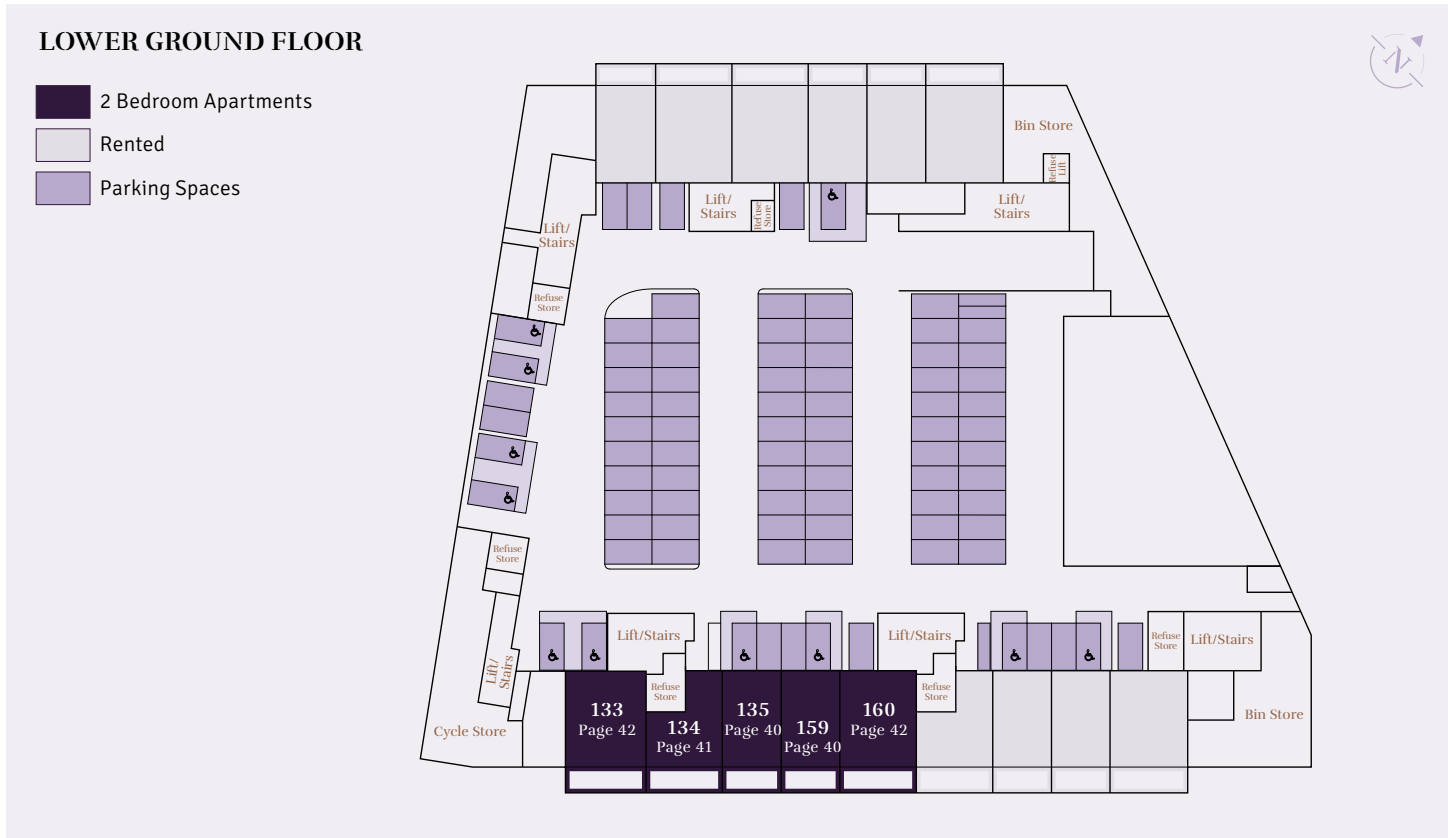
Draks wardrobes
Beautiful solid wood sliding door wardrobes from the Aspen range are finished with a mirrored infill.

Details of the internal specification and finish are subject to change and this is provided as a guide only. Computer Generated Images (CGIs) are indicative only.

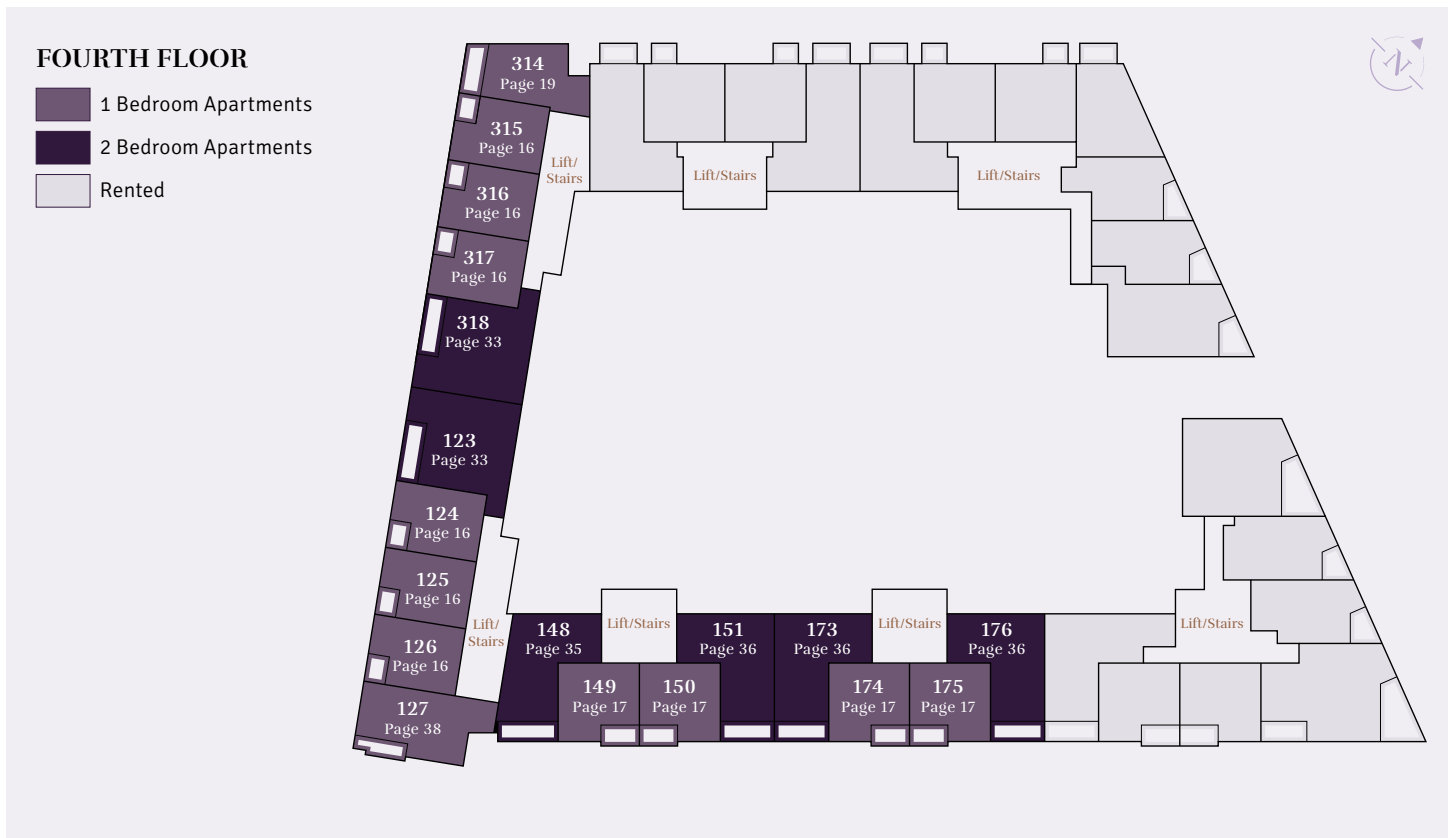


← The spacious light-filled kitchen/dining/lounge area leads onto a balcony further extending your living space.

Athlone & Faraday Mansions floor level directory



Athlone & Faraday Mansions floor level directory





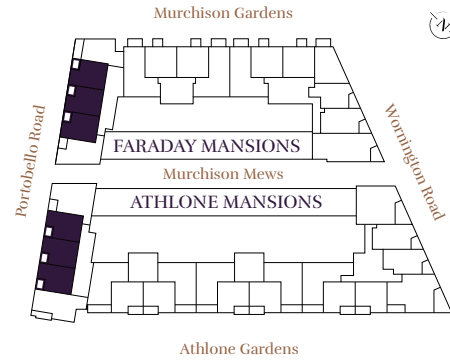
← Enjoy the cityscape views from your private balcony. This pretty outside space is perfect for alfresco dining.

The Ledbury

1 BEDROOM APARTMENT

109*, 110*, 111*, 114*, 115*, 116*, 119*, 120*, 121*, 124*, 125*, 126*, 300, 301, 302, 305, 306, 307, 310, 311, 312, 315, 316, 317

FLOORPLATE



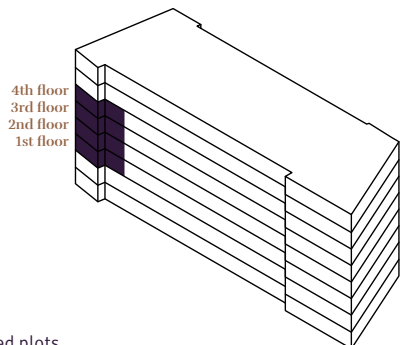
DIMENSIONS

Room	Dimensions (m)	Dimensions (ft)
Kitchen/Lounge	8.69 x 4.33m	28'6" x 14'2"
Bedroom	4.40 x 2.82m	14'5" x 9'3"
Bathroom	2.29 x 2.02m	7'6" x 6'7"
Balcony	2.75 x 1.91m	9'0" x 6'3"
Total area	51.4 sq m	553.2 sq ft

KEY

C Cupboard	UC Utility cupboard
B Balcony	W Washing machine

FLOOR LOCATOR



Disclaimer
Areas, measurements and distances given are approximate only. Bathroom and kitchen layouts are indicative only and are subject to change. Apartment layout sizes may vary slightly from one another depending on the floor level. Whilst the plans have been prepared with all due care for the convenience of the intending purchaser, the information contained herein is a preliminary guide only.

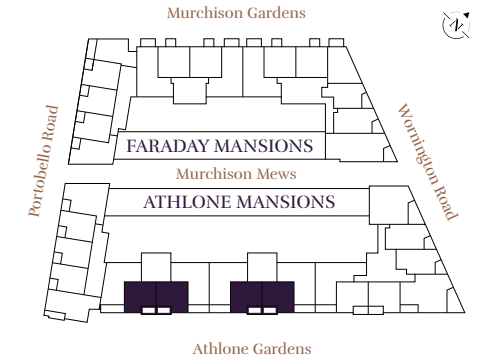


The Moorhouse

1 BEDROOM APARTMENT

137, 138*, 141, 142*, 145, 146*, 149, 150*, 153, 154*, 162, 163*, 166, 167*, 170, 171*, 174, 175*, 178, 179*

FLOORPLATE



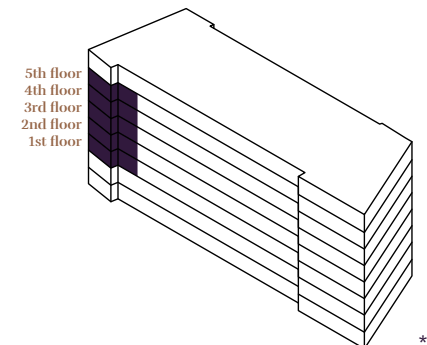
DIMENSIONS

Room	Dimensions (m)	Dimensions (ft)
Kitchen/Lounge	7.40 x 5.43m	24'3" x 17'9"
Bedroom	3.70 x 3.50m	12'1" x 11'5"
Bathroom	2.35 x 1.98m	7'8" x 6'5"
Balcony	3.99 x 1.77m	13'1" x 5'9"
Total area	52.9 sq m	569.4 sq ft

KEY

C Cupboard	UC Utility cupboard
B Balcony	W Washing machine

FLOOR LOCATOR



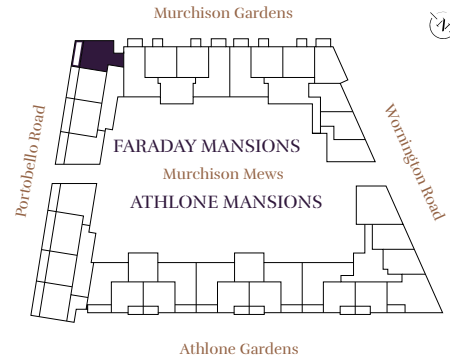
Disclaimer
Areas, measurements and distances given are approximate only. Bathroom and kitchen layouts are indicative only and are subject to change. Apartment layout sizes may vary slightly from one another depending on the floor level. Whilst the plans have been prepared with all due care for the convenience of the intending purchaser, the information contained herein is a preliminary guide only.

The Clarendon

1 BEDROOM APARTMENT

319

FLOORPLATE



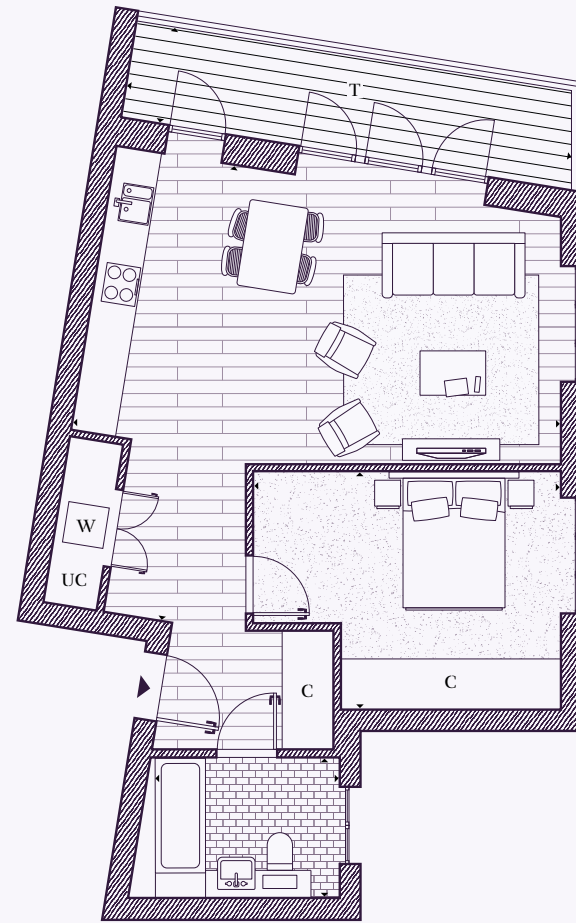
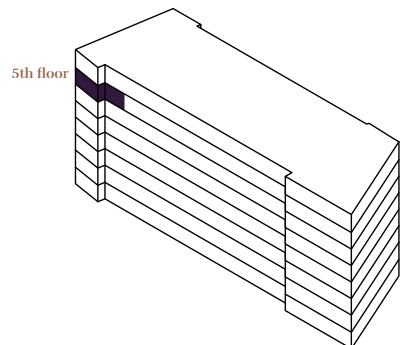
DIMENSIONS

Room	Dimensions (m)	Dimensions (ft)
Kitchen/Lounge	7.20 x 6.80m	23'7" x 22'3"
Bedroom	4.51 x 3.50m	14'9" x 11'5"
Bathroom	2.70 x 2.06m	8'10" x 6'9"
Terrace	6.58 x 1.54m	21'7" x 5'0"
Total area	60.0 sq m	645.8 sq ft

KEY

C Cupboard	UC Utility cupboard
T Terrace	W Washing machine

FLOOR LOCATOR



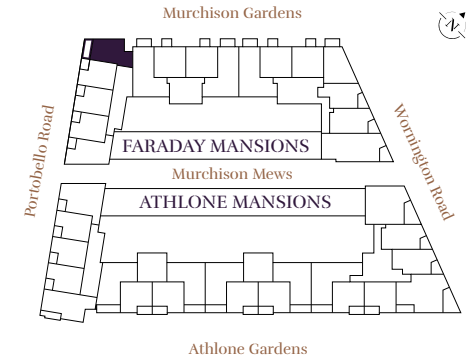
Disclaimer
Areas, measurements and distances given are approximate only. Bathroom and kitchen layouts are indicative only and are subject to change. Apartment layout sizes may vary slightly from one another depending on the floor level. Whilst the plans have been prepared with all due care for the convenience of the intending purchaser, the information contained herein is a preliminary guide only.

The Thorpe

1 BEDROOM APARTMENT

299, 304, 309, 314

FLOORPLATE



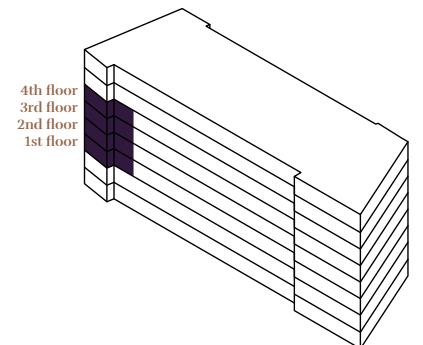
DIMENSIONS

Room	Dimensions (m)	Dimensions (ft)
Kitchen/Lounge	5.58 x 5.02m	18'3" x 16'5"
Bedroom	3.69 x 3.07m	12'1" x 10'0"
Bathroom	2.29 x 1.99m	7'6" x 6'6"
Balcony	4.55 x 1.58m	14'11" x 5'2"
Total area	51.3 sq m	552.1 sq ft

KEY

C Cupboard	UC Utility cupboard
B Balcony	W Washing machine

FLOOR LOCATOR



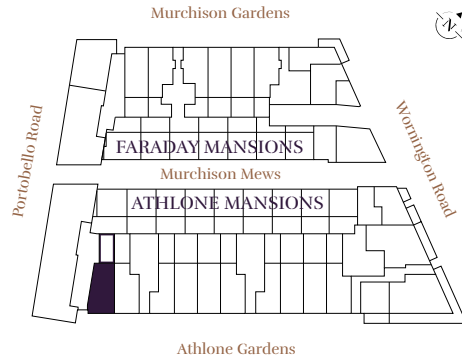
Disclaimer
Areas, measurements and distances given are approximate only. Bathroom and kitchen layouts are indicative only and are subject to change. Apartment layout sizes may vary slightly from one another depending on the floor level. Whilst the plans have been prepared with all due care for the convenience of the intending purchaser, the information contained herein is a preliminary guide only.

The Acklam

1 BEDROOM APARTMENT

132

FLOORPLATE



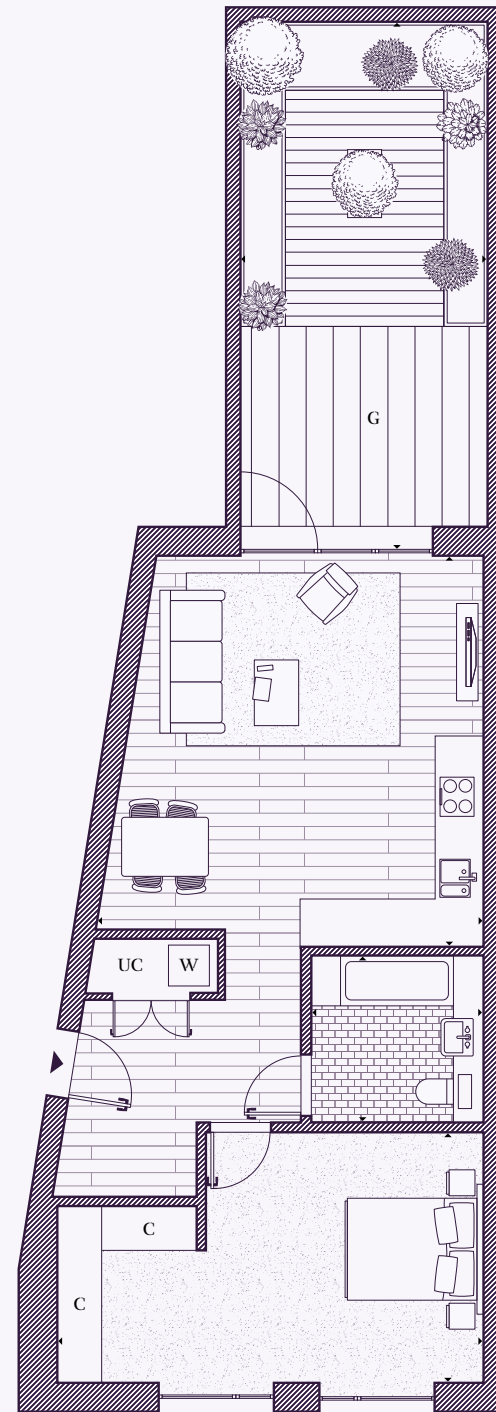
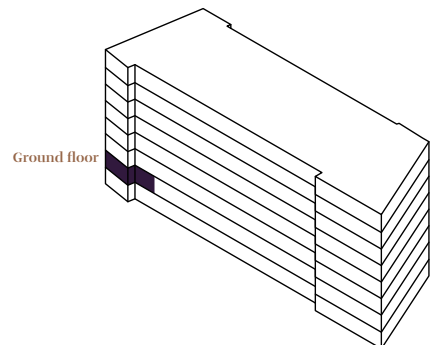
DIMENSIONS

Room	Dimensions (m)	Dimensions (ft)
Kitchen/Lounge	5.74 x 5.70m	18'9" x 18'8"
Bedroom	6.27 x 3.70m	20'6" x 12'1"
Bathroom	2.45 x 2.44m	8'1" x 8'0"
Garden	7.65 x 3.63m	25'1" x 11'10"
Total area	70.1 sq m	754.5 sq ft

KEY

C Cupboard	UC Utility cupboard
G Garden	W Washing machine

FLOOR LOCATOR



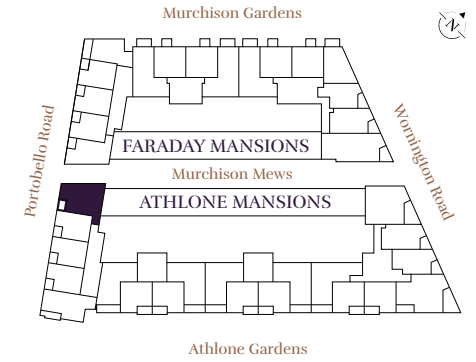
Disclaimer
Areas, measurements and distances given are approximate only. Bathroom and kitchen layouts are indicative only and are subject to change. Apartment layout sizes may vary slightly from one another depending on the floor level. Whilst the plans have been prepared with all due care for the convenience of the intending purchaser, the information contained herein is a preliminary guide only.

The Lonsdale

1 BEDROOM APARTMENT

108

FLOORPLATE



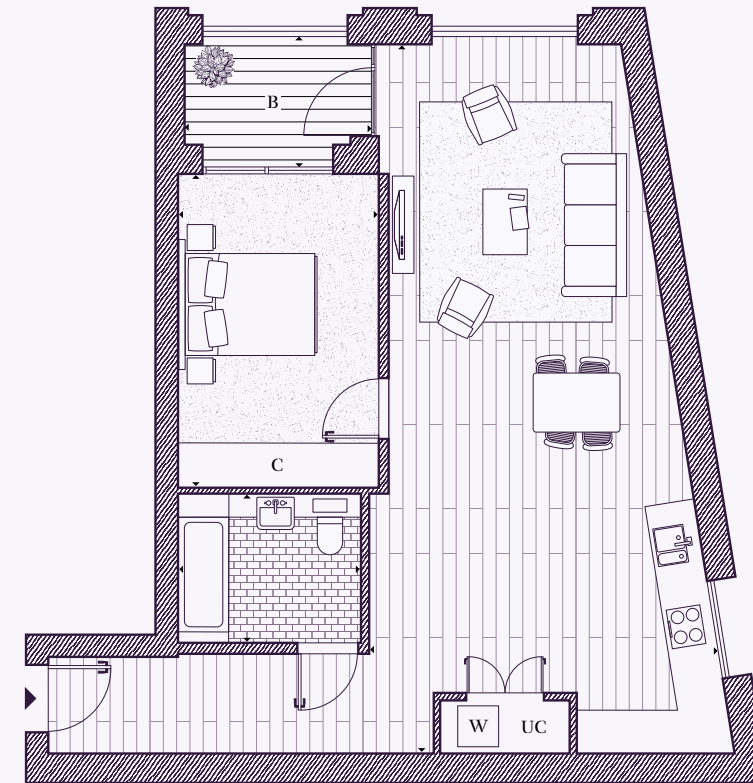
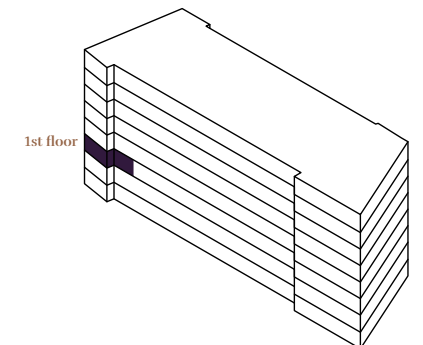
DIMENSIONS

Room	Dimensions (m)	Dimensions (ft)
Kitchen/Lounge	10.43 x 5.19m	34'2" x 17'0"
Bedroom	4.61 x 2.95m	15'1" x 9'8"
Bathroom	2.60 x 2.20m	8'6" x 7'2"
Balcony	2.76 x 1.81m	9'1" x 5'11"
Total area	73.8 sq m	794.3 sq ft

KEY

C Cupboard	UC Utility cupboard
B Balcony	W Washing machine

FLOOR LOCATOR



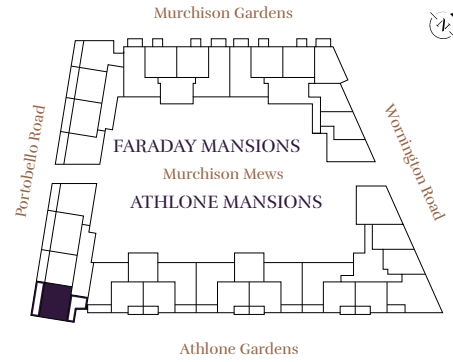
Disclaimer
Areas, measurements and distances given are approximate only. Bathroom and kitchen layouts are indicative only and are subject to change. Apartment layout sizes may vary slightly from one another depending on the floor level. Whilst the plans have been prepared with all due care for the convenience of the intending purchaser, the information contained herein is a preliminary guide only.

The Bevington

1 BEDROOM APARTMENT

131

FLOORPLATE



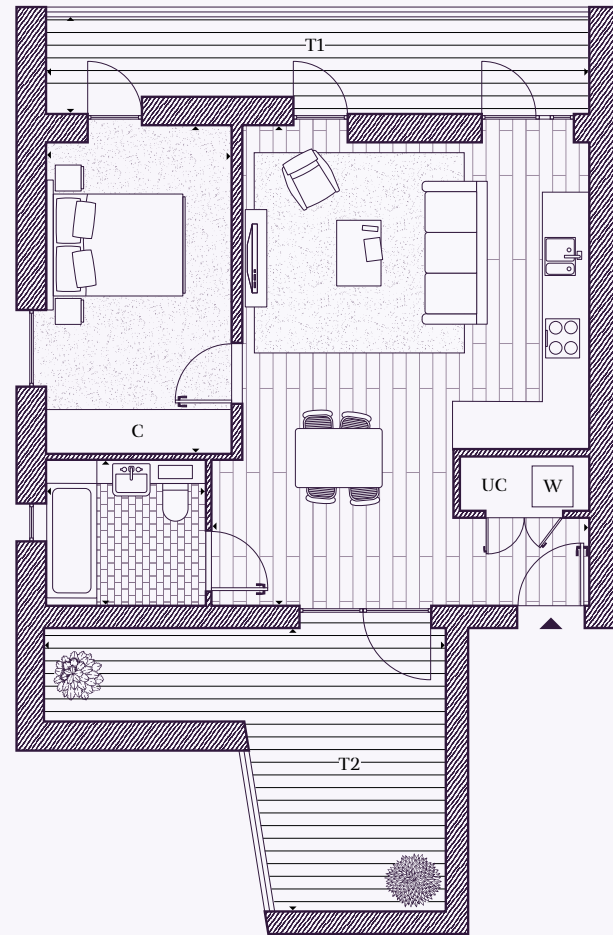
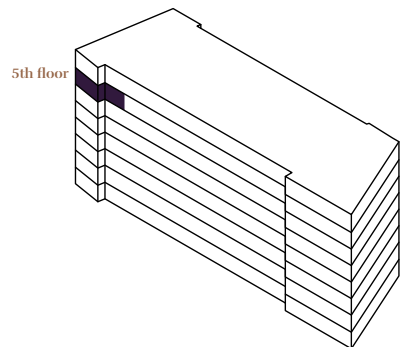
DIMENSIONS

Room	Dimensions (m)	Dimensions (ft)
Kitchen/Lounge	6.80 x 5.55m	22'3" x 18'2"
Bedroom	4.59 x 2.88m	15'0" x 9'5"
Bathroom	2.29 x 2.20m	7'6" x 7'2"
Terrace 1	8.42 x 1.57m	27'7" x 5'1"
Terrace 2	6.34 x 4.19m	20'9" x 13'8"
Total area	54.3 sq m	584.4 sq ft

KEY

C Cupboard	UC Utility cupboard
T Terrace	W Washing machine

FLOOR LOCATOR



Disclaimer
Areas, measurements and distances given are approximate only. Bathroom and kitchen layouts are indicative only and are subject to change. Apartment layout sizes may vary slightly from one another depending on the floor level. Whilst the plans have been prepared with all due care for the convenience of the intending purchaser, the information contained herein is a preliminary guide only.

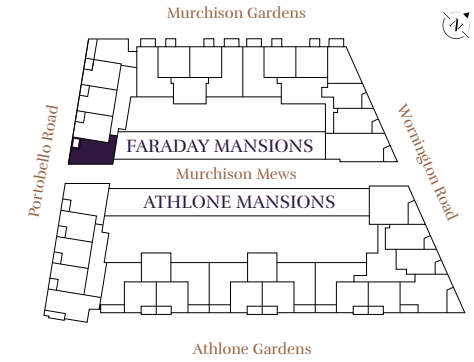


The Faraday

1 BEDROOM APARTMENT

303

FLOORPLATE



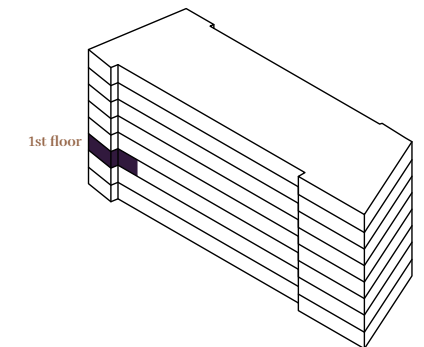
DIMENSIONS

Room	Dimensions (m)	Dimensions (ft)
Kitchen/Lounge	8.18 x 3.59m	26'10" x 11'9"
Bedroom	4.25 x 2.80m	13'11" x 9'2"
Bathroom	2.28 x 2.02m	7'5" x 6'7"
Balcony	2.75 x 1.91m	9'0" x 6'3"
Total area	56.0 sq m	602.7 sq ft

KEY

C Cupboard	UC Utility cupboard
B Balcony	W Washing machine

FLOOR LOCATOR



Disclaimer
Areas, measurements and distances given are approximate only. Bathroom and kitchen layouts are indicative only and are subject to change. Apartment layout sizes may vary slightly from one another depending on the floor level. Whilst the plans have been prepared with all due care for the convenience of the intending purchaser, the information contained herein is a preliminary guide only.



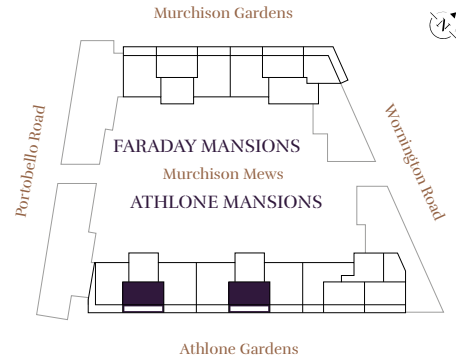
← The spacious master bedroom features an elegant built-in mirror-fronted wardrobe and wooden-finish floors.

The Newton

1 BEDROOM APARTMENT

157, 182

FLOORPLATE



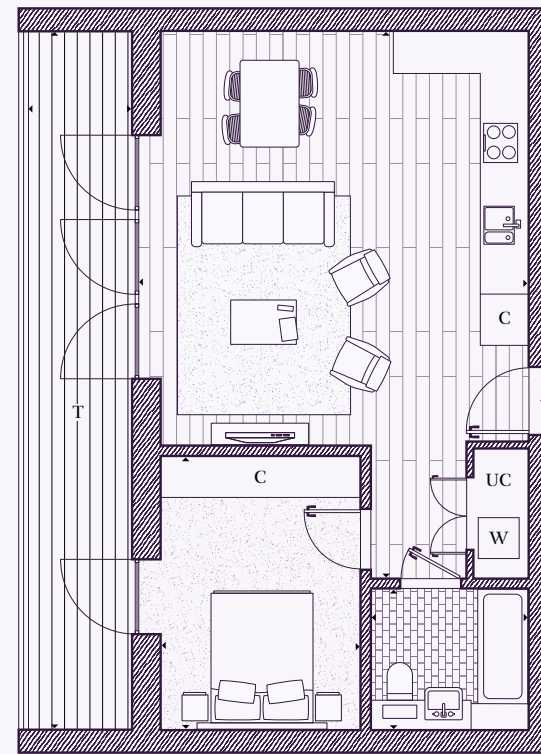
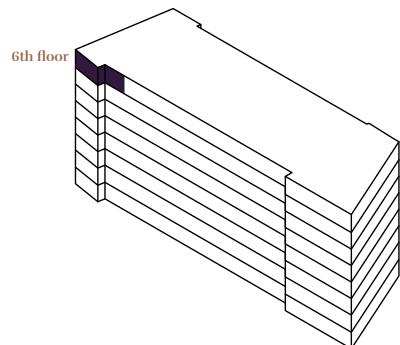
DIMENSIONS

Room	Dimensions (m)	Dimensions (ft)
Kitchen/Lounge	6.12 x 5.40m	20'0" x 17'8"
Bedroom	4.03 x 2.97m	13'2" x 9'8"
Bathroom	2.24 x 1.99m	7'4" x 6'6"
Terrace	10.27 x 1.67m	33'8" x 5'5"
Total area	55.6 sq m	598.4 sq ft

KEY

C Cupboard	UC Utility cupboard
T Terrace	W Washing machine

FLOOR LOCATOR



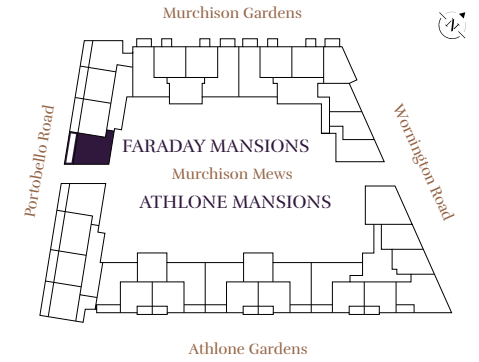
Disclaimer
Areas, measurements and distances given are approximate only. Bathroom and kitchen layouts are indicative only and are subject to change. Apartment layout sizes may vary slightly from one another depending on the floor level. Whilst the plans have been prepared with all due care for the convenience of the intending purchaser, the information contained herein is a preliminary guide only.

The Linden

1 BEDROOM APARTMENT

322

FLOORPLATE



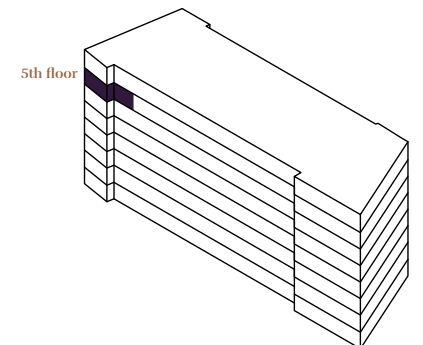
DIMENSIONS

Room	Dimensions (m)	Dimensions (ft)
Kitchen/Lounge	7.76 x 3.99m	25'5" x 13'1"
Bedroom	4.47 x 3.23m	14'7" x 10'7"
Bathroom	2.29 x 2.01m	7'6" x 6'7"
Terrace	6.64 x 1.52m	21'9" x 4'11"
Total area	61.8 sq m	665.2 sq ft

KEY

C Cupboard	UC Utility cupboard
T Terrace	W Washing machine
KI Kitchen island	

FLOOR LOCATOR



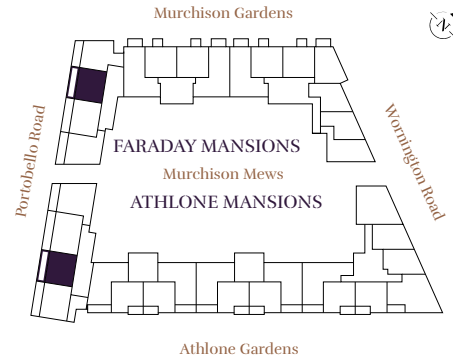
Disclaimer
Areas, measurements and distances given are approximate only. Bathroom and kitchen layouts are indicative only and are subject to change. Apartment layout sizes may vary slightly from one another depending on the floor level. Whilst the plans have been prepared with all due care for the convenience of the intending purchaser, the information contained herein is a preliminary guide only.

The Aldridge

1 BEDROOM APARTMENT

130*, 320

FLOORPLATE



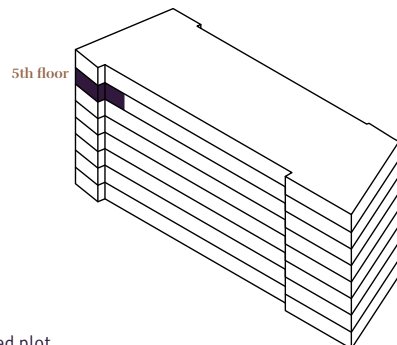
DIMENSIONS

Room	Dimensions (m)	Dimensions (ft)
Kitchen/Lounge	6.80 x 5.39m	22'3" x 17'8"
Bedroom	4.55 x 3.57m	14'11" x 11'8"
Bathroom	2.28 x 2.00m	7'5" x 6'6"
Terrace	7.86 x 1.54m	25'9" x 5'0"
Total area	53.7 sq m	578.0 sq ft

KEY

C Cupboard	UC Utility cupboard
T Terrace	W Washing machine

FLOOR LOCATOR



Disclaimer

Areas, measurements and distances given are approximate only. Bathroom and kitchen layouts are indicative only and are subject to change. Apartment layout sizes may vary slightly from one another depending on the floor level. Whilst the plans have been prepared with all due care for the convenience of the intending purchaser, the information contained herein is a preliminary guide only.

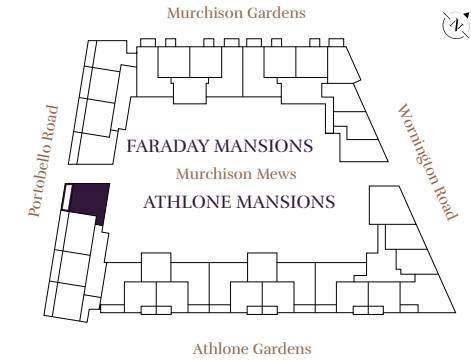


The Colville

1 BEDROOM APARTMENT

128

FLOORPLATE



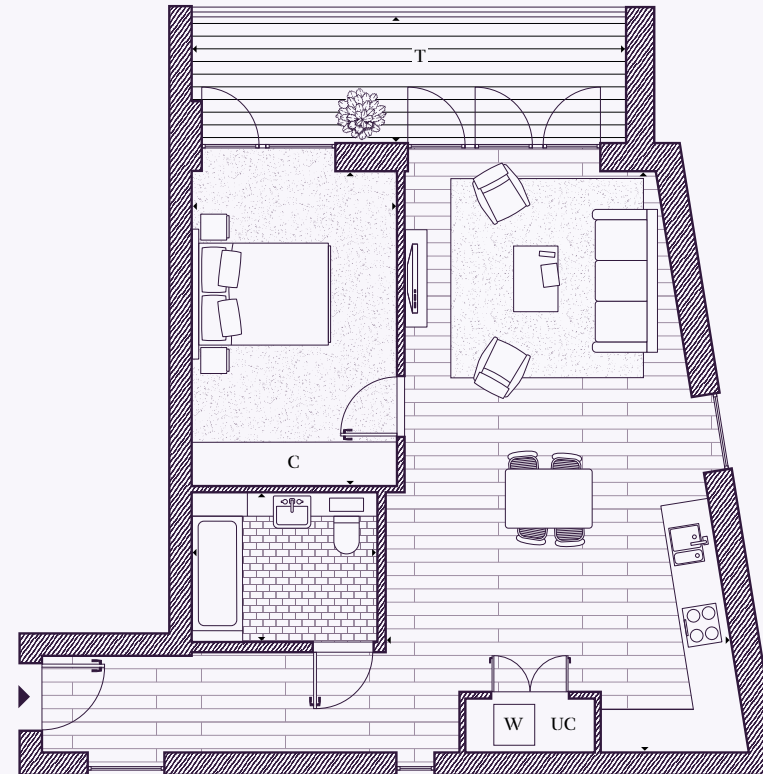
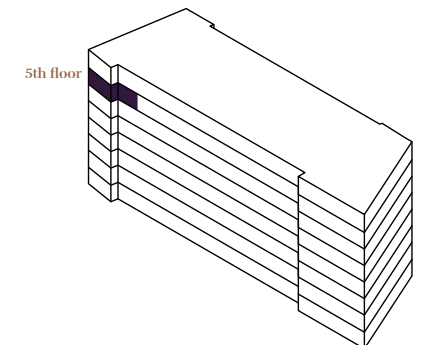
DIMENSIONS

Room	Dimensions (m)	Dimensions (ft)
Kitchen/Lounge	8.54 x 5.21m	28'0" x 17'1"
Bedroom	4.63 x 3.00m	15'2" x 9'10"
Bathroom	2.60 x 2.20m	8'6" x 7'2"
Terrace	6.54 x 1.60m	21'5" x 5'2"
Total area	67.1 sq m	722.2 sq ft

KEY

C Cupboard	UC Utility cupboard
T Terrace	W Washing machine

FLOOR LOCATOR



Disclaimer

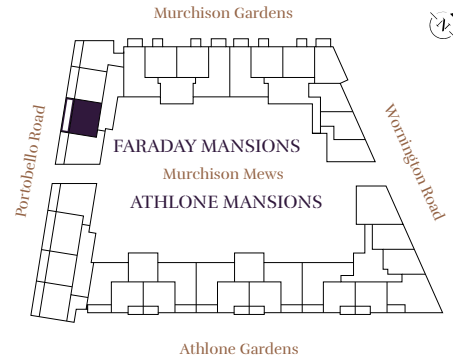
Areas, measurements and distances given are approximate only. Bathroom and kitchen layouts are indicative only and are subject to change. Apartment layout sizes may vary slightly from one another depending on the floor level. Whilst the plans have been prepared with all due care for the convenience of the intending purchaser, the information contained herein is a preliminary guide only.

A The Leamington

1 BEDROOM APARTMENT

321

FLOORPLATE



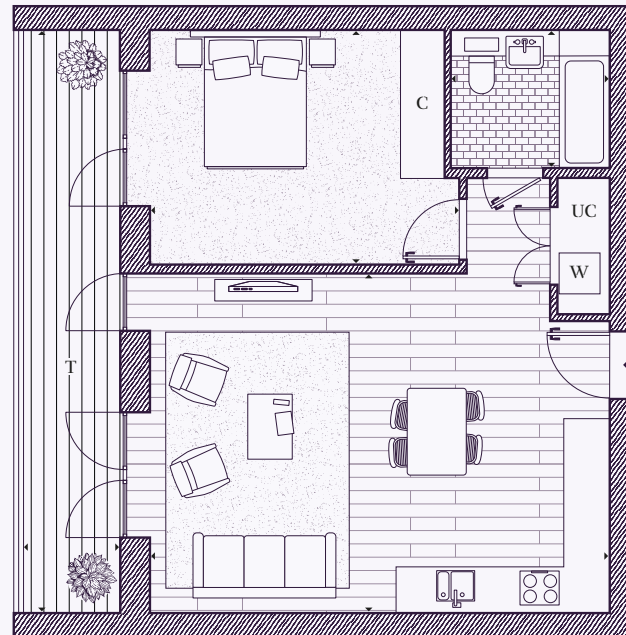
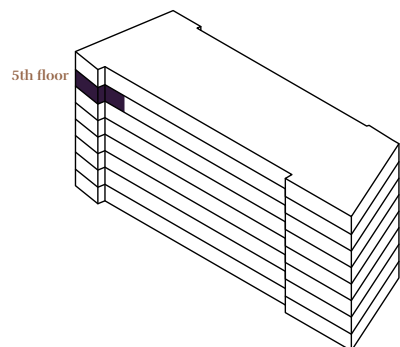
DIMENSIONS

Room	Dimensions (m)	Dimensions (ft)
Kitchen/Lounge	6.80 x 5.05m	22'3" x 16'6"
Bedroom	4.53 x 3.42m	14'10" x 11'2"
Bathroom	2.31 x 1.99m	7'6" x 6'6"
Terrace	8.92 x 1.53m	29'2" x 5'0"
Total area	58.3 sq m	627.5 sq ft

KEY

C Cupboard	UC Utility cupboard
T Terrace	W Washing machine

FLOOR LOCATOR



Disclaimer
Areas, measurements and distances given are approximate only. Bathroom and kitchen layouts are indicative only and are subject to change. Apartment layout sizes may vary slightly from one another depending on the floor level. Whilst the plans have been prepared with all due care for the convenience of the intending purchaser, the information contained herein is a preliminary guide only.



← Bathrooms offer indulgent spaces in calming neutral tones featuring premium bathroom ceramics and chrome fittings.

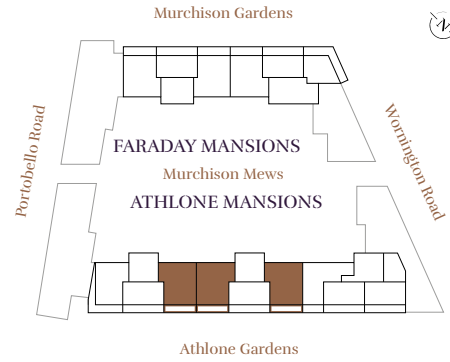
Computer Generated Image (CGI) is indicative only.

The Oxford

2 BEDROOM APARTMENT

158, 181*, 183

FLOORPLATE



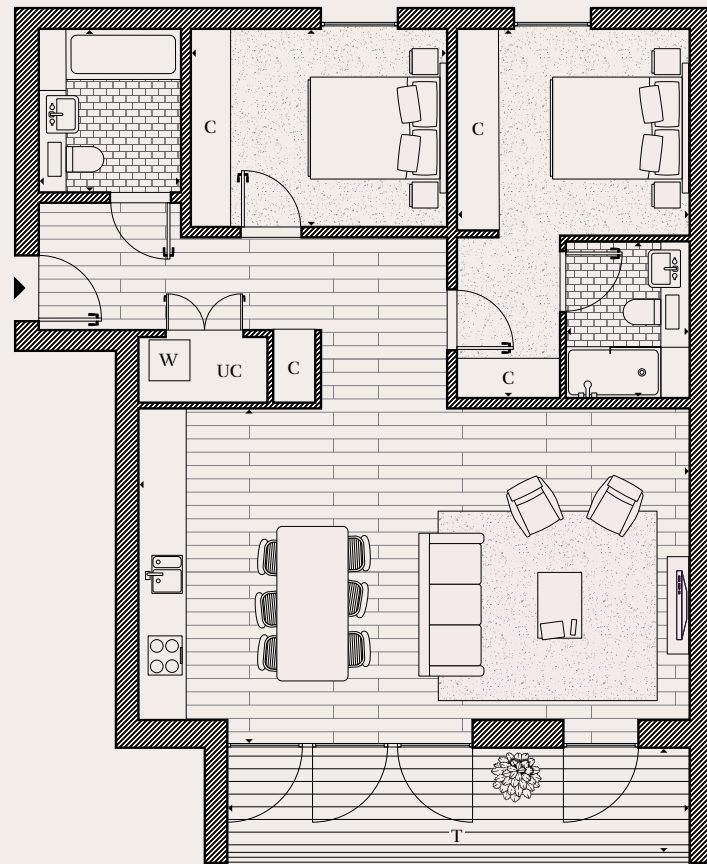
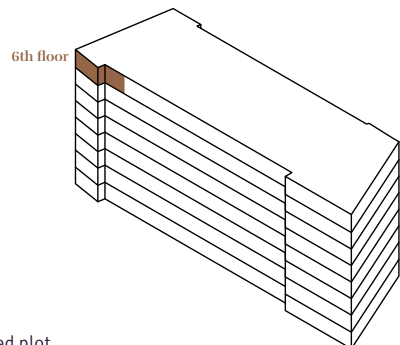
DIMENSIONS

Room	Dimensions (m)	Dimensions (ft)
Kitchen/Lounge	8.12 x 4.83m	26'7" x 15'10"
Master Bedroom	5.49 x 3.43m	18'0" x 11'3"
En suite	2.28 x 1.72m	7'5" x 5'8"
Bedroom 2	3.76 x 2.90m	12'4" x 9'6"
Bathroom	2.40 x 2.09m	7'10" x 6'10"
Terrace	8.09 x 1.68m	26'6" x 5'6"
Total area	88.9 sq m	956.9 sq ft

KEY

- C** Cupboard
- UC** Utility cupboard
- T** Terrace
- W** Washing machine

FLOOR LOCATOR



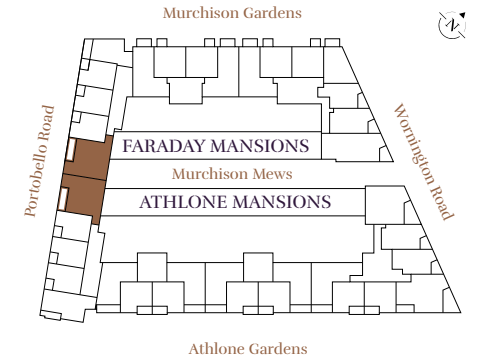
Disclaimer
Areas, measurements and distances given are approximate only. Bathroom and kitchen layouts are indicative only and are subject to change. Apartment layout sizes may vary slightly from one another depending on the floor level. Whilst the plans have been prepared with all due care for the convenience of the intending purchaser, the information contained herein is a preliminary guide only.

The Chesterton

2 BEDROOM APARTMENT

113*, 118*, 123*, 308, 313, 318

FLOORPLATE



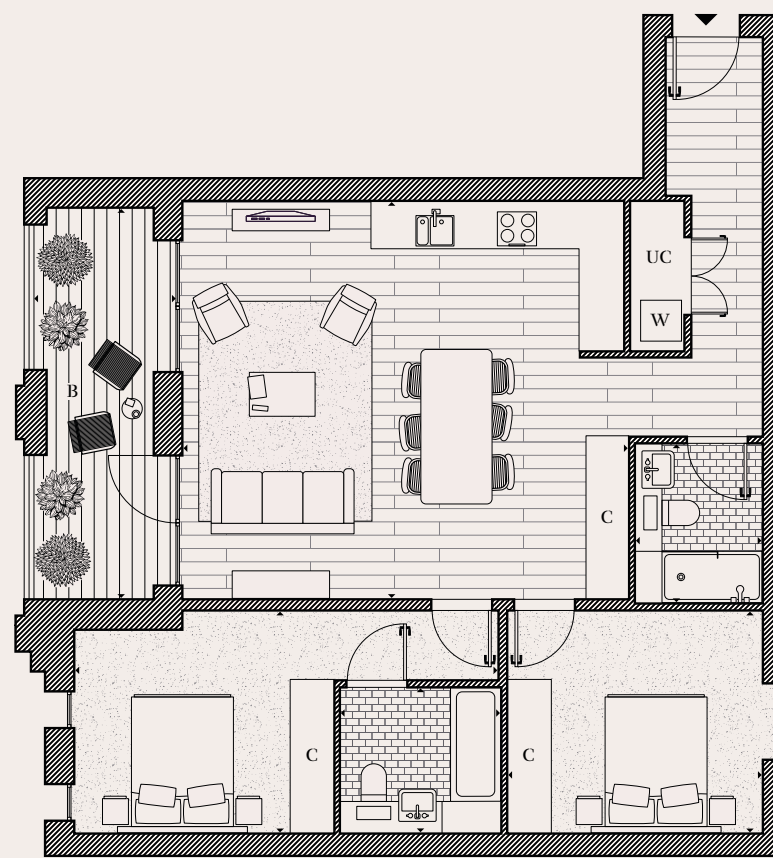
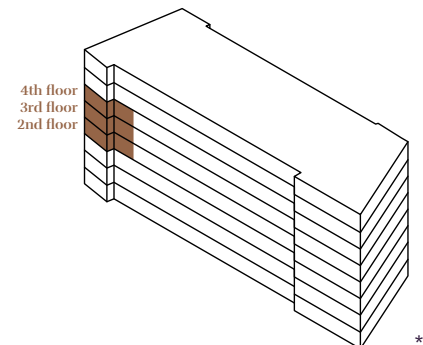
DIMENSIONS

Room	Dimensions (m)	Dimensions (ft)
Kitchen/Lounge	6.57 x 5.86m	21'6" x 19'2"
Master Bedroom	6.22 x 3.29m	20'4" x 10'9"
En suite	2.31 x 2.03m	7'7" x 6'7"
Bedroom 2	3.75 x 3.31m	12'3" x 10'10"
Shower room	1.71 x 2.30m	5'7" x 7'6"
Balcony	5.78 x 1.92m	18'11" x 6'3"
Total area	87.5 sq m	941.8 sq ft

KEY

- C** Cupboard
- UC** Utility cupboard
- B** Balcony
- W** Washing machine

FLOOR LOCATOR



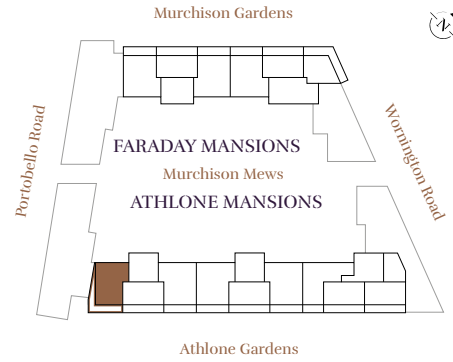
Disclaimer
Areas, measurements and distances given are approximate only. Bathroom and kitchen layouts are indicative only and are subject to change. Apartment layout sizes may vary slightly from one another depending on the floor level. Whilst the plans have been prepared with all due care for the convenience of the intending purchaser, the information contained herein is a preliminary guide only.

The Lansdowne

2 BEDROOM APARTMENT

156

FLOORPLATE



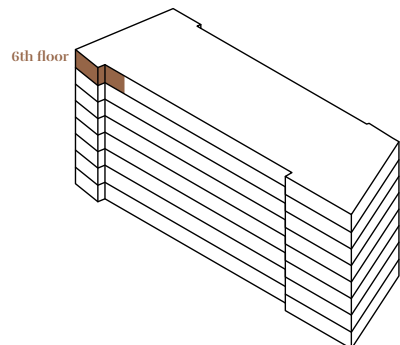
DIMENSIONS

Room	Dimensions (m)	Dimensions (ft)
Kitchen/Lounge	6.64 x 4.57m	21'9" x 14'11"
Master Bedroom	6.15 x 3.04m	20'2" x 9'11"
En suite	2.25 x 1.77m	7'4" x 5'9"
Bedroom 2	3.41 x 2.74m	11'2" x 8'1"
Bathroom	2.46 x 1.93m	8'0" x 6'3"
Terrace 1	8.57 x 1.70m	28'1" x 5'6"
Terrace 2	11.87 x 1.64m	38'11" x 5'4"
Total area	73.8 sq m	794.3 sq ft

KEY

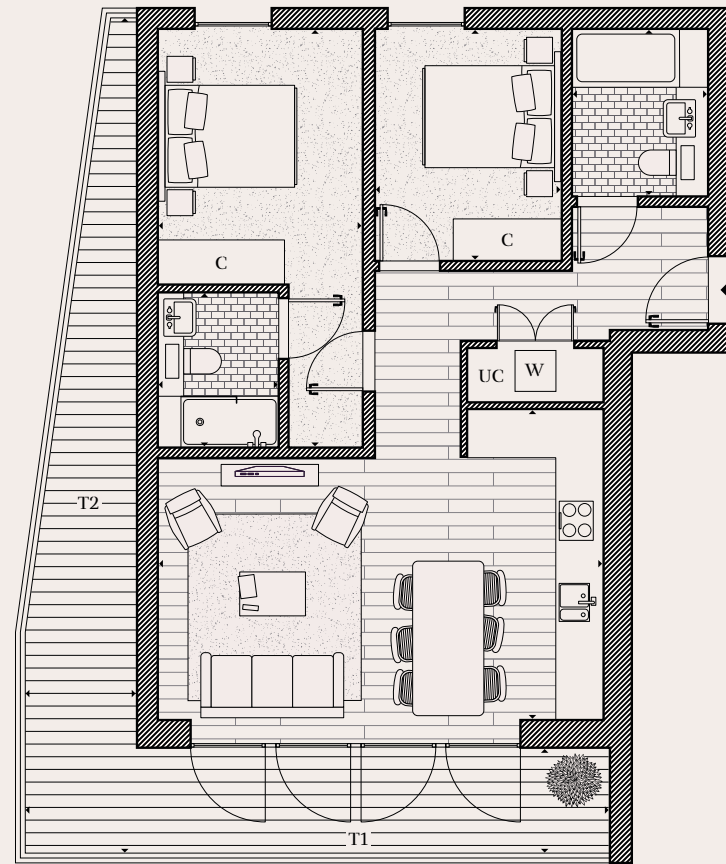
C Cupboard	UC Utility cupboard
T Terrace	W Washing machine

FLOOR LOCATOR



Disclaimer

Areas, measurements and distances given are approximate only. Bathroom and kitchen layouts are indicative only and are subject to change. Apartment layout sizes may vary slightly from one another depending on the floor level. Whilst the plans have been prepared with all due care for the convenience of the intending purchaser, the information contained herein is a preliminary guide only.

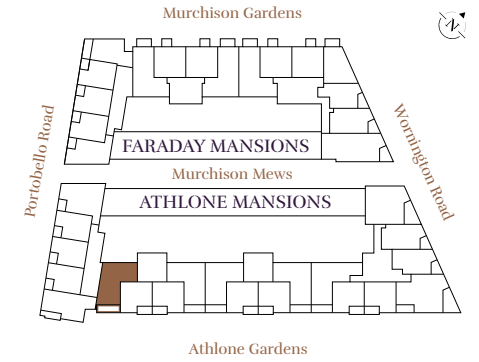


The Oakworth

2 BEDROOM APARTMENT

136, 140, 144, 148, 152

FLOORPLATE



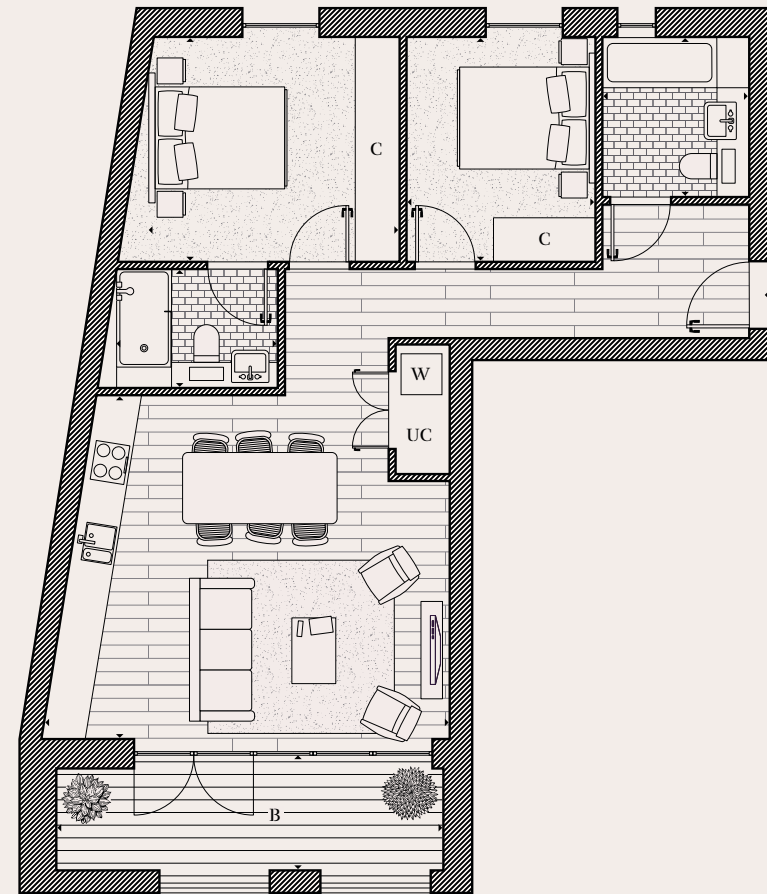
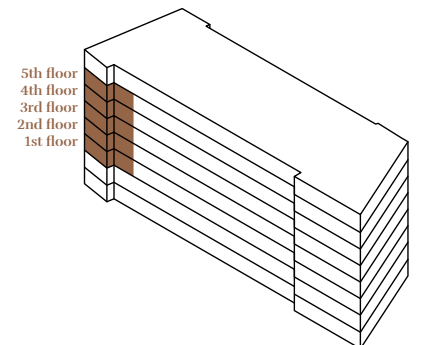
DIMENSIONS

Room	Dimensions (m)	Dimensions (ft)
Kitchen/Lounge	5.78 x 5.07m	18'11" x 16'7"
Master Bedroom	3.59 x 3.30m	11'9" x 10'9"
En suite	2.33 x 1.73m	7'7" x 5'8"
Bedroom 2	3.30 x 2.78m	10'9" x 9'1"
Bathroom	2.36 x 2.03m	7'8" x 6'7"
Balcony	5.68 x 1.71m	18'7" x 5'7"
Total area	72.3 sq m	778.2 sq ft

KEY

C Cupboard	UC Utility cupboard
B Balcony	W Washing machine

FLOOR LOCATOR



Disclaimer

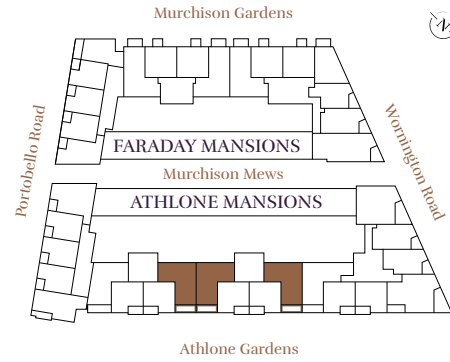
Areas, measurements and distances given are approximate only. Bathroom and kitchen layouts are indicative only and are subject to change. Apartment layout sizes may vary slightly from one another depending on the floor level. Whilst the plans have been prepared with all due care for the convenience of the intending purchaser, the information contained herein is a preliminary guide only.

A The Clydesdale

2 BEDROOM APARTMENT

139, 143, 147, 151, 155, 161*, 164, 165*, 168, 169*, 172, 173*, 176, 177*, 180

FLOORPLATE



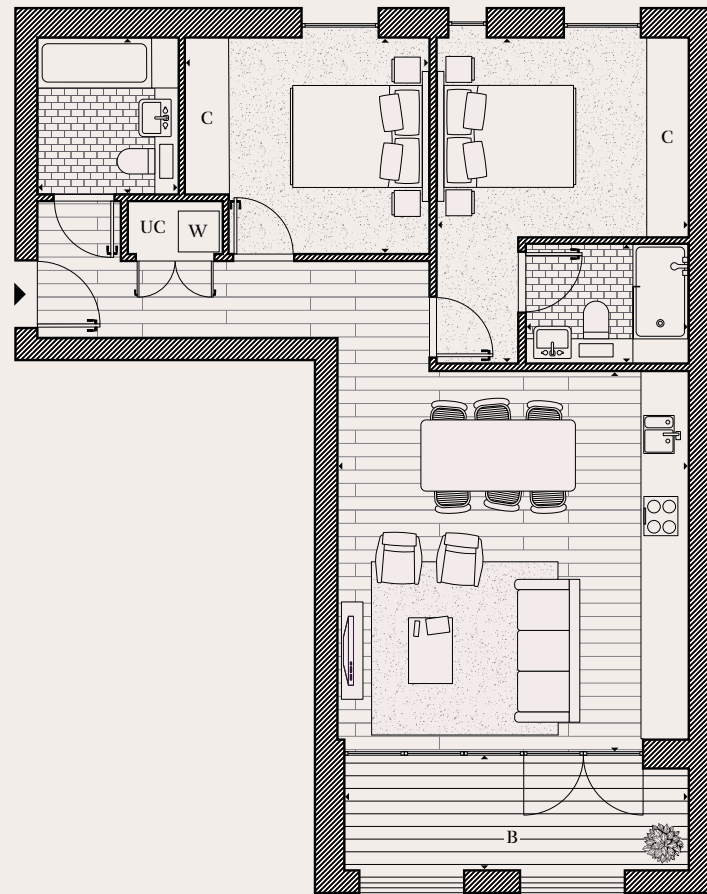
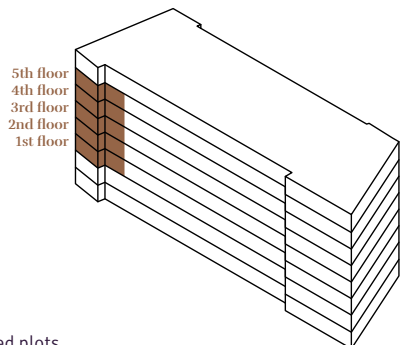
DIMENSIONS

Room	Dimensions (m)	Dimensions (ft)
Kitchen/Lounge	5.60 x 5.17m	18'4" x 16'11"
Master Bedroom	4.78 x 3.72m	15'8" x 12'2"
En suite	2.30 x 1.75m	7'5" x 5'8"
Bedroom 2	3.60 x 3.19m	11'9" x 10'5"
Bathroom	2.31 x 2.04m	7'6" x 6'8"
Balcony	5.07 x 1.70m	16'7" x 5'6"
Total area	72.9 sq m	784.6 sq ft

KEY

C Cupboard	UC Utility cupboard
B Balcony	W Washing machine

FLOOR LOCATOR



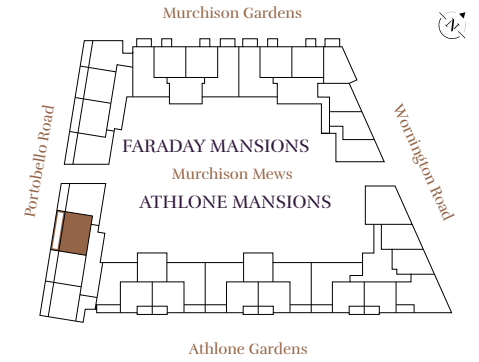
Disclaimer
Areas, measurements and distances given are approximate only. Bathroom and kitchen layouts are indicative only and are subject to change. Apartment layout sizes may vary slightly from one another depending on the floor level. Whilst the plans have been prepared with all due care for the convenience of the intending purchaser, the information contained herein is a preliminary guide only.

A The Pembridge

2 BEDROOM APARTMENT

129

FLOORPLATE



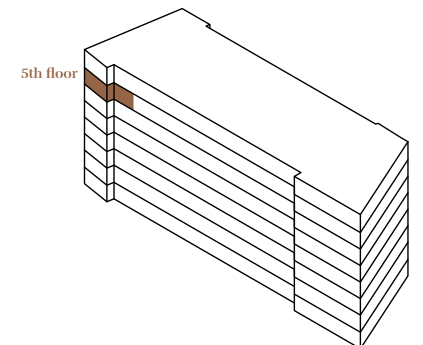
DIMENSIONS

Room	Dimensions (m)	Dimensions (ft)
Kitchen/Lounge	6.80 x 4.22m	22'3" x 13'10"
Master Bedroom	4.85 x 2.77m	15'10" x 9'1"
En suite	2.30 x 1.73m	7'6" x 5'8"
Bedroom 2	3.27 x 2.83m	10'8" x 9'3"
Bathroom	2.29 x 1.99m	7'6" x 6'6"
Terrace	9.79 x 1.57m	32'1" x 5'1"
Total area	67.9 sq m	730.8 sq ft

KEY

C Cupboard	UC Utility cupboard
T Terrace	W Washing machine

FLOOR LOCATOR



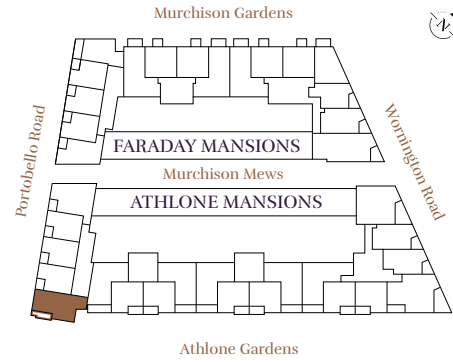
Disclaimer
Areas, measurements and distances given are approximate only. Bathroom and kitchen layouts are indicative only and are subject to change. Apartment layout sizes may vary slightly from one another depending on the floor level. Whilst the plans have been prepared with all due care for the convenience of the intending purchaser, the information contained herein is a preliminary guide only.

A The Portland

2 BEDROOM APARTMENT

112, 117, 122, 127

FLOORPLATE



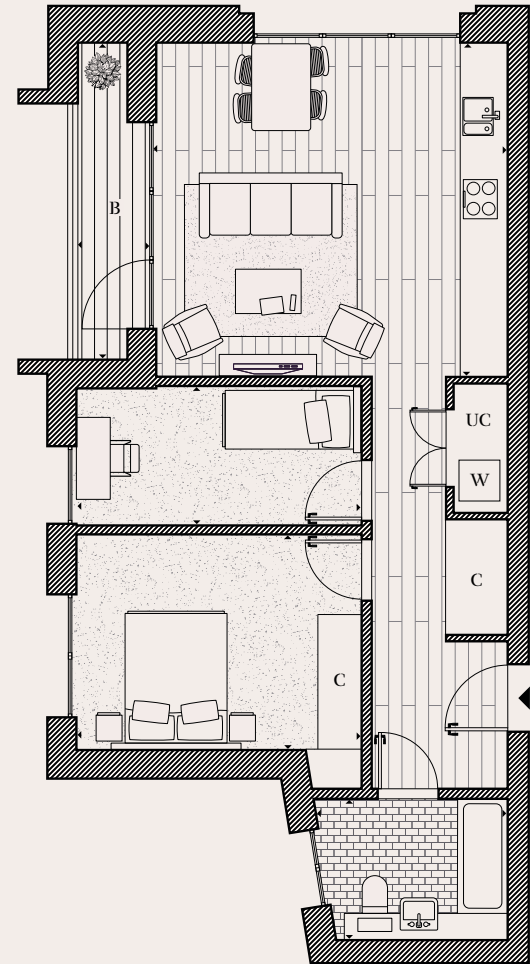
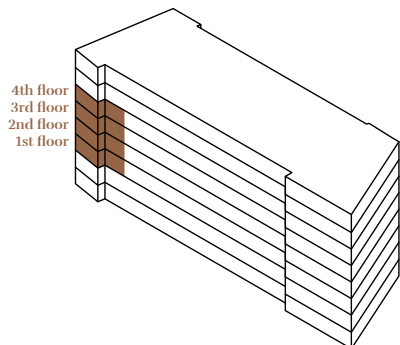
DIMENSIONS

Room	Dimensions (m)	Dimensions (ft)
Kitchen/Lounge	5.16 x 4.91m	16'11" x 16'1"
Master Bedroom	4.13 x 3.16m	13'6" x 10'4"
Bedroom 2	4.21 x 2.05m	13'9" x 6'8"
Bathroom	2.74 x 1.99m	8'11" x 6'6"
Balcony	4.66 x 1.73m	15'3" x 5'8"
Total area	67.5 sq m	726.5 sq ft

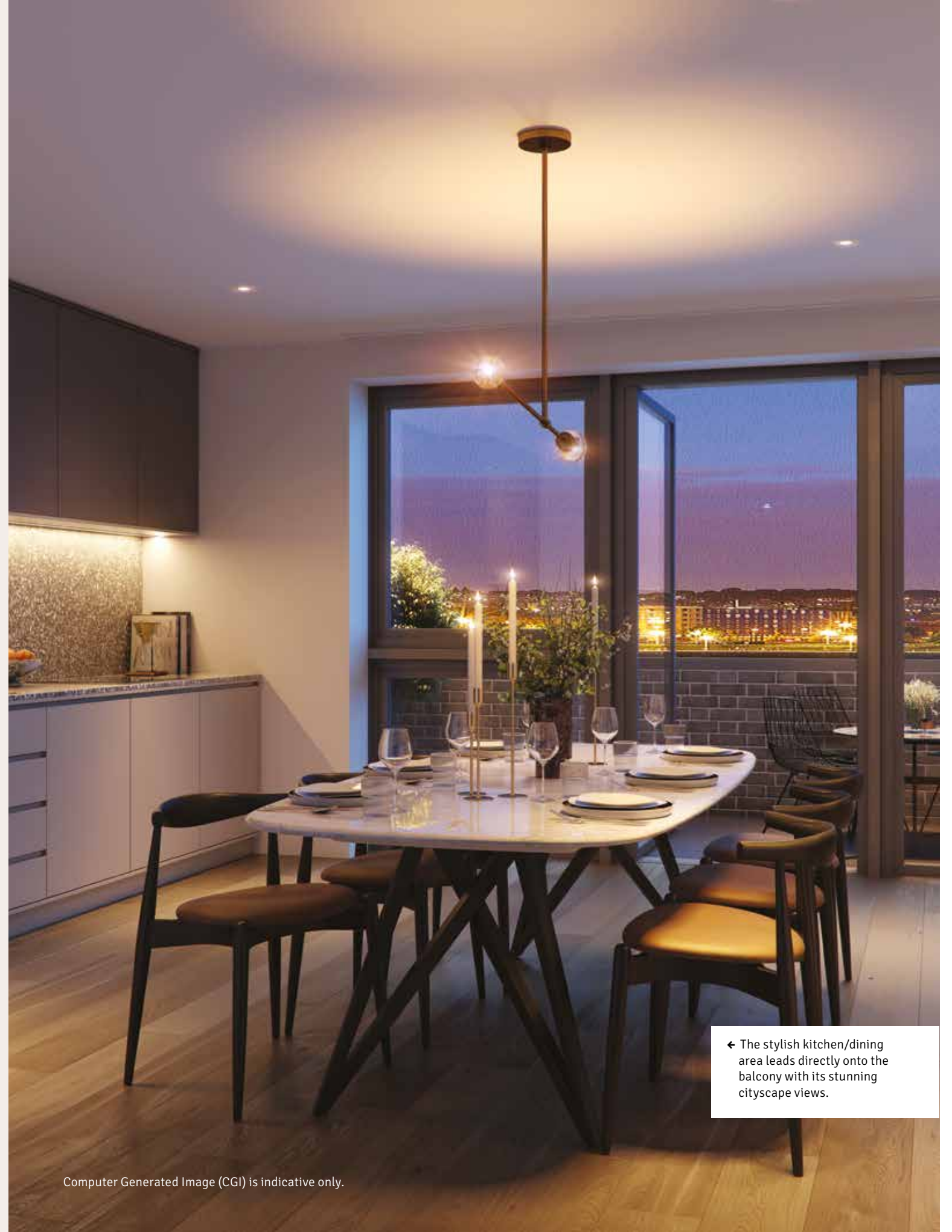
KEY

- C** Cupboard
- UC** Utility cupboard
- B** Balcony
- W** Washing machine

FLOOR LOCATOR



Disclaimer
Areas, measurements and distances given are approximate only. Bathroom and kitchen layouts are indicative only and are subject to change. Apartment layout sizes may vary slightly from one another depending on the floor level. Whilst the plans have been prepared with all due care for the convenience of the intending purchaser, the information contained herein is a preliminary guide only.



← The stylish kitchen/dining area leads directly onto the balcony with its stunning cityscape views.

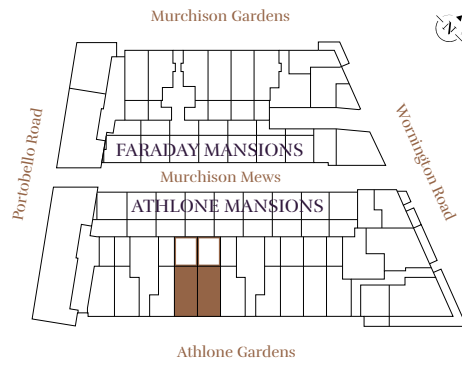
Computer Generated Image (CGI) is indicative only.

A The Elgin

2 BEDROOM DUPLEX

135, 159*

FLOORPLATE



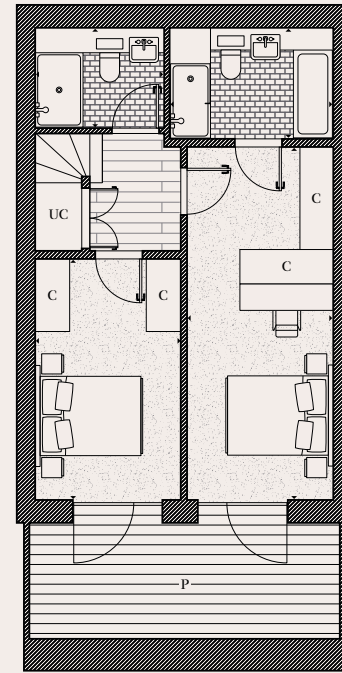
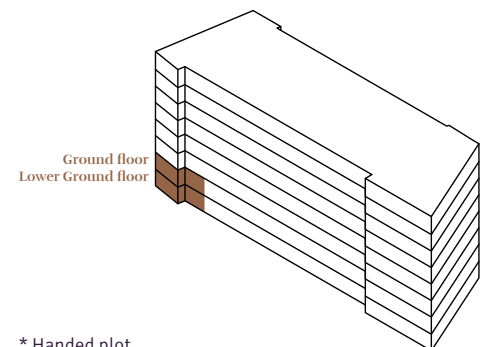
DIMENSIONS

Room	Dimensions (m)	Dimensions (ft)
Kitchen/Lounge	12.15 x 5.65m	39'10" x 18'6"
Master Bedroom	6.67 x 2.77m	21'10" x 9'1"
En suite	3.03 x 2.05m	9'11" x 6'8"
Bedroom 2	4.56 x 2.75m	14'11" x 9'0"
Shower room	2.29 x 1.79m	7'6" x 5'10"
Garden	7.43 x 5.76m	24'4" x 18'10"
Patio	5.88 x 2.20m	19'3" x 7'2"
Total area	118.9 sq m	1279.8 sq ft

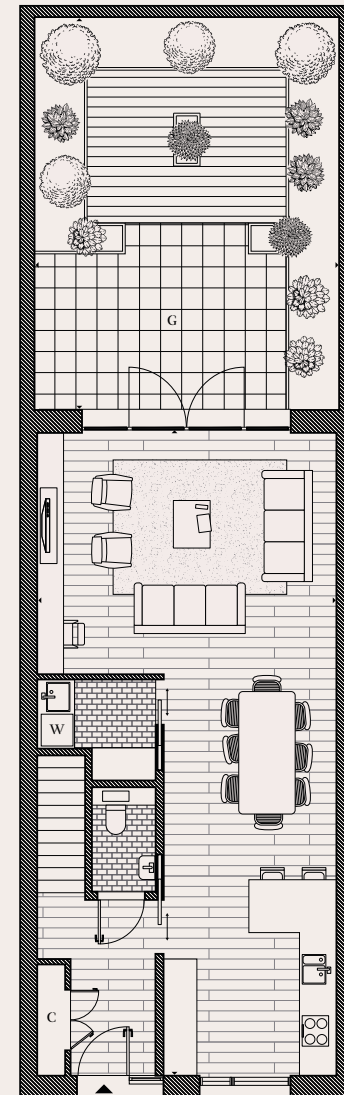
KEY

C Cupboard	UC Utility cupboard
G Garden	W Washing machine
P Patio	

FLOOR LOCATOR



Lower Ground Floor



Ground Floor

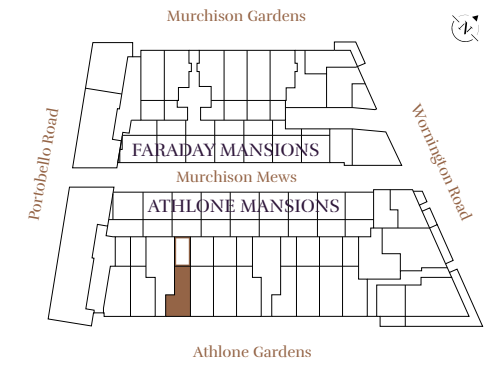
Disclaimer
Areas, measurements and distances given are approximate only. Bathroom and kitchen layouts are indicative only and are subject to change. Apartment layout sizes may vary slightly from one another depending on the floor level. Whilst the plans have been prepared with all due care for the convenience of the intending purchaser, the information contained herein is a preliminary guide only.

A The Cambridge

2 BEDROOM DUPLEX

134

FLOORPLATE



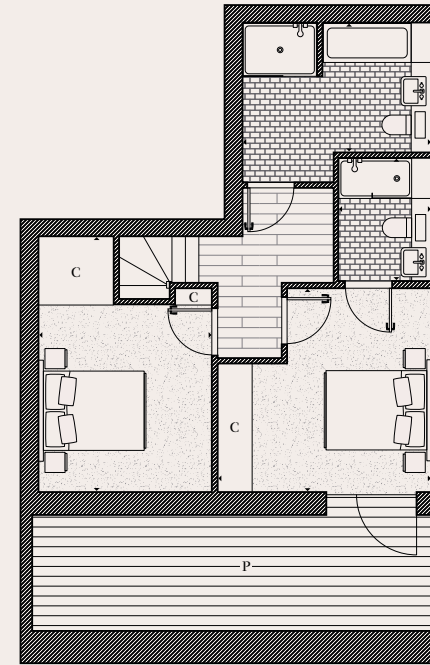
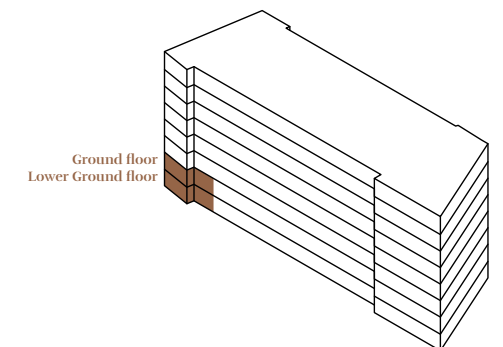
DIMENSIONS

Room	Dimensions (m)	Dimensions (ft)
Kitchen/Lounge	12.13 x 3.61m	39'9" x 11'10"
Master Bedroom	4.04 x 3.85m	13'3" x 12'7"
En suite	2.28 x 1.77m	7'5" x 5'9"
Bedroom 2	3.55 x 3.29m	11'7" x 10'9"
Bathroom	3.58 x 2.47m	11'8" x 8'1"
Garden	7.43 x 3.63m	24'4" x 11'11"
Patio	7.68 x 2.20m	25'2" x 7'2"
Total area	105.3 sq m	1133.4 sq ft

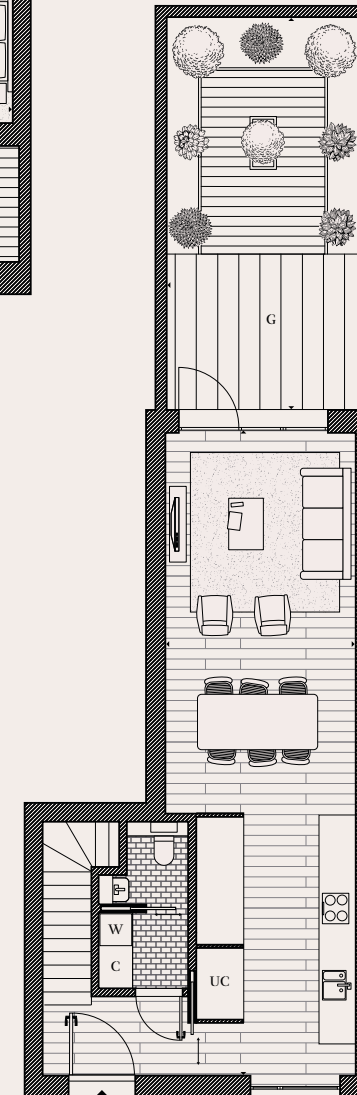
KEY

C Cupboard	UC Utility cupboard
G Garden	W Washing machine
P Patio	

FLOOR LOCATOR



Lower Ground Floor



Ground Floor

Disclaimer
Areas, measurements and distances given are approximate only. Bathroom and kitchen layouts are indicative only and are subject to change. Apartment layout sizes may vary slightly from one another depending on the floor level. Whilst the plans have been prepared with all due care for the convenience of the intending purchaser, the information contained herein is a preliminary guide only.

A The Morgan

2 BEDROOM DUPLEX

133, 160

FLOORPLATE



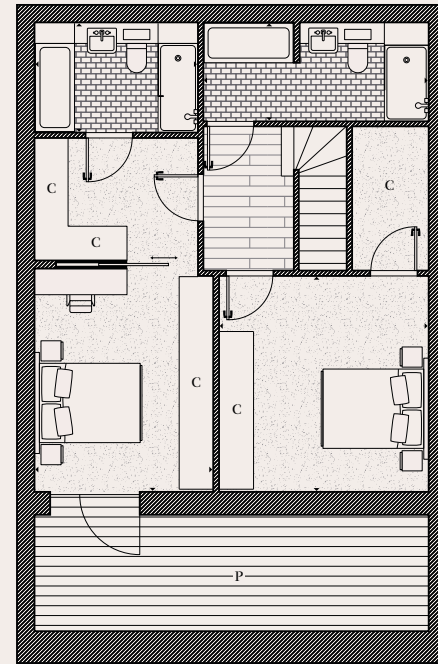
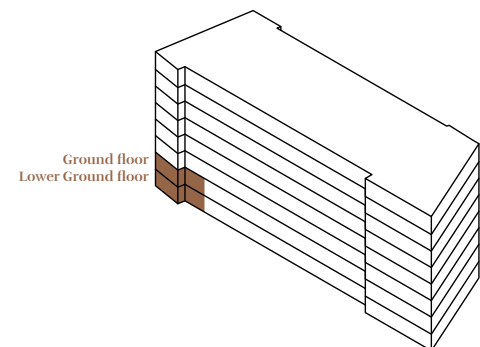
DIMENSIONS

Room	Dimensions (m)	Dimensions (ft)
Kitchen/Lounge	12.15 x 5.92m	39'10" x 19'5"
Master Bedroom	6.53 x 3.38m	21'5" x 11'1"
En suite	3.01 x 1.98m	9'10" x 6'5"
Bedroom 2	4.08 x 3.96m	13'4" x 12'11"
Bathroom	4.26 x 1.75m	13'11" x 5'8"
Garden	7.43 x 3.63m	24'4" x 11'10"
Patio	7.56 x 2.20m	24'9" x 7'2"
Total area	131.4 sq m	1414.3 sq ft

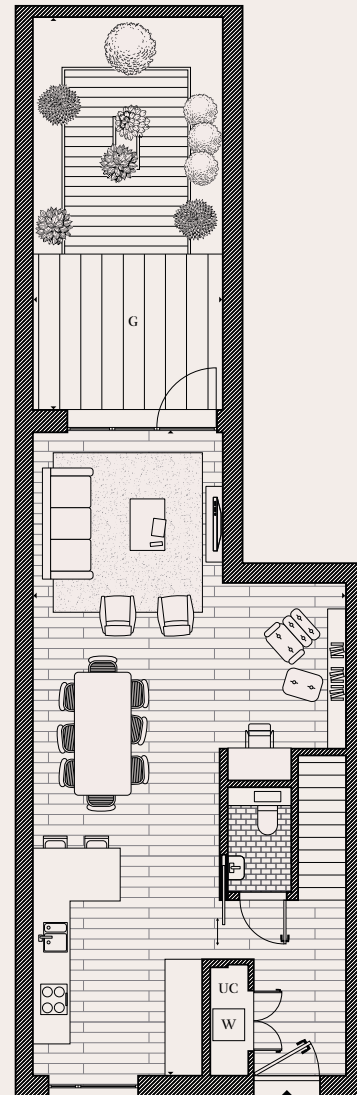
KEY

- C** Cupboard
- UC** Utility cupboard
- G** Garden
- W** Washing machine
- P** Patio

FLOOR LOCATOR



Lower Ground Floor



Ground Floor

Disclaimer
Areas, measurements and distances given are approximate only. Bathroom and kitchen layouts are indicative only and are subject to change. Apartment layout sizes may vary slightly from one another depending on the floor level. Whilst the plans have been prepared with all due care for the convenience of the intending purchaser, the information contained herein is a preliminary guide only.



← Athlone Mansions (foreground) and Faraday Mansions provide space for shops, cafés and restaurants along Portobello Road.

Computer Generated Image (CGI) is indicative only.
All new names for roads and buildings in phase 2B are subject to change.



About us



- ← Left, The Folium, Muswell Hill
- ← Right, Southall Village, Southall

Catalyst New Homes delivers a diverse range of developments in a mix of styles, layouts and finishes, tailored to the neighbourhoods they are a part of; from boutique apartments in central locations, to transformative multi-phase regeneration projects, and family homes in picturesque countryside villages.

We are a multi-award-winning housing association, with a portfolio of nearly 34,000 homes across London, the Home Counties and South East England. We are experts in placemaking and developing tenure-blind neighbourhoods; adopting a creative approach to design and urban planning.

Our aim is to provide Homes People Love. We invest in our communities for the long-term creating neighbourhoods that can flourish and grow. We ensure our developments are always well maintained so that our residents continue to be proud to live in a Catalyst new home.

Selling agent



Disclaimer

This brochure is not an offer or contract, nor part of one. You should not rely on statements in any agents' particulars or by word of mouth or in writing ("information") as being factually accurate about the properties, their condition or value. No agents have any authority to make any representations about the properties, and accordingly any information given is entirely without responsibility on the part of the agents, seller(s) or lessor(s). Some images of the properties within this brochure are artist's impressions and do not represent the exact look and feel of the development. The actual results may therefore vary from the images shown in this publication. All new names for roads and buildings in phase 2B are subject to change. Areas, measurements and distances given are approximate only. Kitchen and bathroom layouts are indicative only. Any reference to alterations to, or use of, any part of the property does not mean that any necessary planning, building regulations or other consent has been obtained. A buyer or lessee must find out by inspection or in other ways that these matters have been properly dealt with and that all information is correct. The VAT position relating to the property may change without notice.

