



# THE AURIA

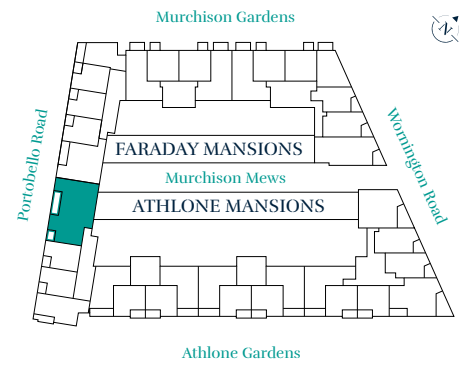
NOTTING HILL

Portobello Edition  
3 Bedroom Apartment



# 3 BEDROOM APARTMENT

## FLOORPLATE



## DIMENSIONS

### Room

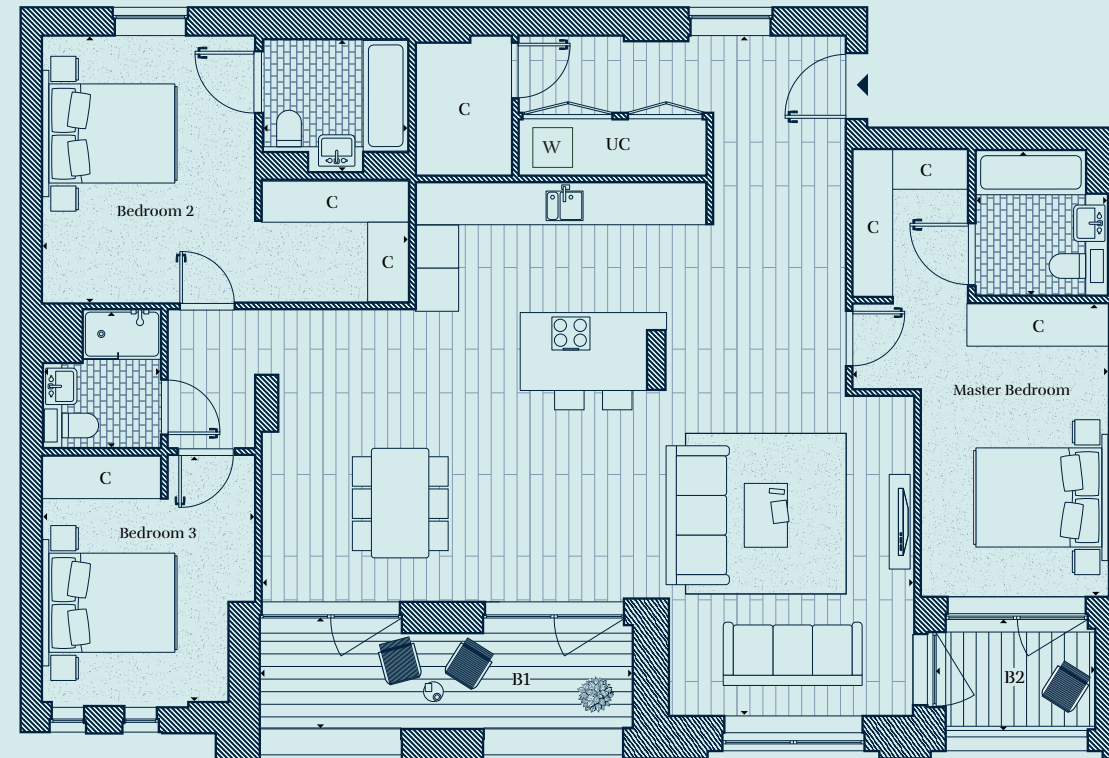
Kitchen/Lounge/Diner	10.38 x 9.88m	34'1" x 32'5"
Master Bedroom	4.43 x 3.85m	14'6" x 12'8"
En suite 1	2.20 x 2.00m	7'3" x 6'7"
Bedroom 2	5.49 x 3.96m	18'0" x 13'0"
En suite 2	2.23 x 1.97m	7'4" x 6'6"
Bedroom 3	3.71 x 3.16m	12'2" x 10'4"
Bathroom	2.17 x 1.77m	7'1" x 5'10"
<b>Total area</b>	<b>135.0 sq m</b>	<b>1453.1 sq ft</b>
Balcony 1	5.63 x 1.66m	18'6" x 5'5"
Balcony 2	2.35 x 1.68m	7'8" x 5'6"

## FLOOR LOCATOR

- 6<sup>th</sup> Floor
- 5<sup>th</sup> Floor
- 4<sup>th</sup> Floor
- 3<sup>rd</sup> Floor
- 2<sup>nd</sup> Floor
- 1<sup>st</sup> Floor
- Ground Floor
- Lower Ground Floor

## KEY

- C** Cupboard
- B** Balcony
- UC** Utility cupboard
- W** Washing machine



  
**Portobello Road**

### Disclaimer

Areas, measurements and distances given are approximate only. Bathroom and kitchen layouts are indicative only and are subject to change. Apartment layout sizes may vary slightly from one another depending on the floor level. Whilst the plans have been prepared with all due care for the convenience of the intending purchaser, the information contained herein is a preliminary guide only.

Pattern inspired by the eclectic personality and captivating charm of the iconic Portobello Road

