

# PARK MODERN

Hyde Park, London



# PARK MODERN

Hyde Park, London

[parkmodern.com](http://parkmodern.com)



PARK LIFE

NOTTING HILL

KENSINGTON PALACE GARDENS

KENSINGTON PALACE

KENSINGTON

KENSINGTON GARDENS

HYDE PARK

MARBLE ARCH

MAYFAIR

PARK MODERN



FRONT  
ROW









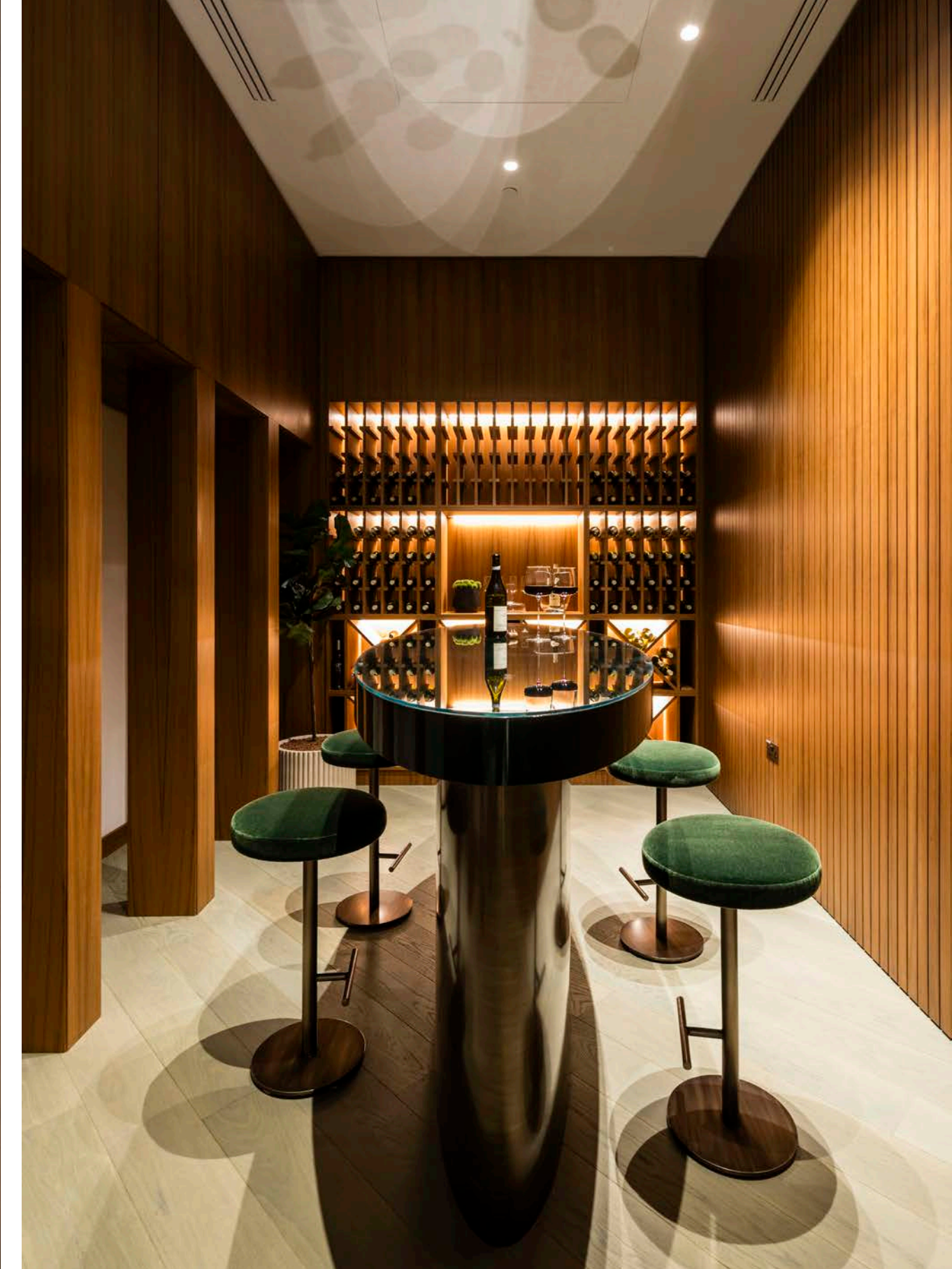












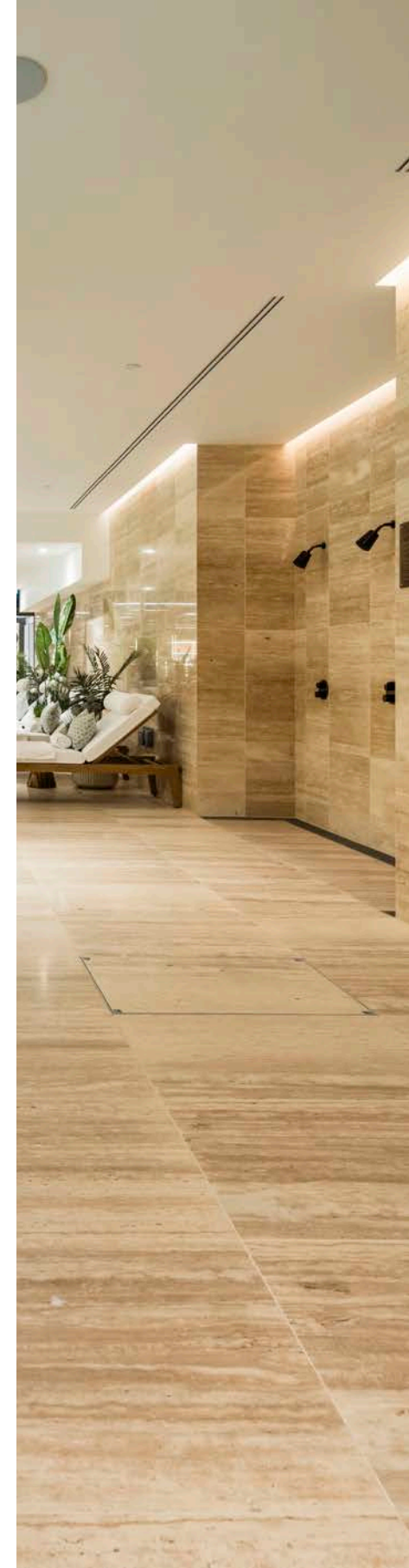
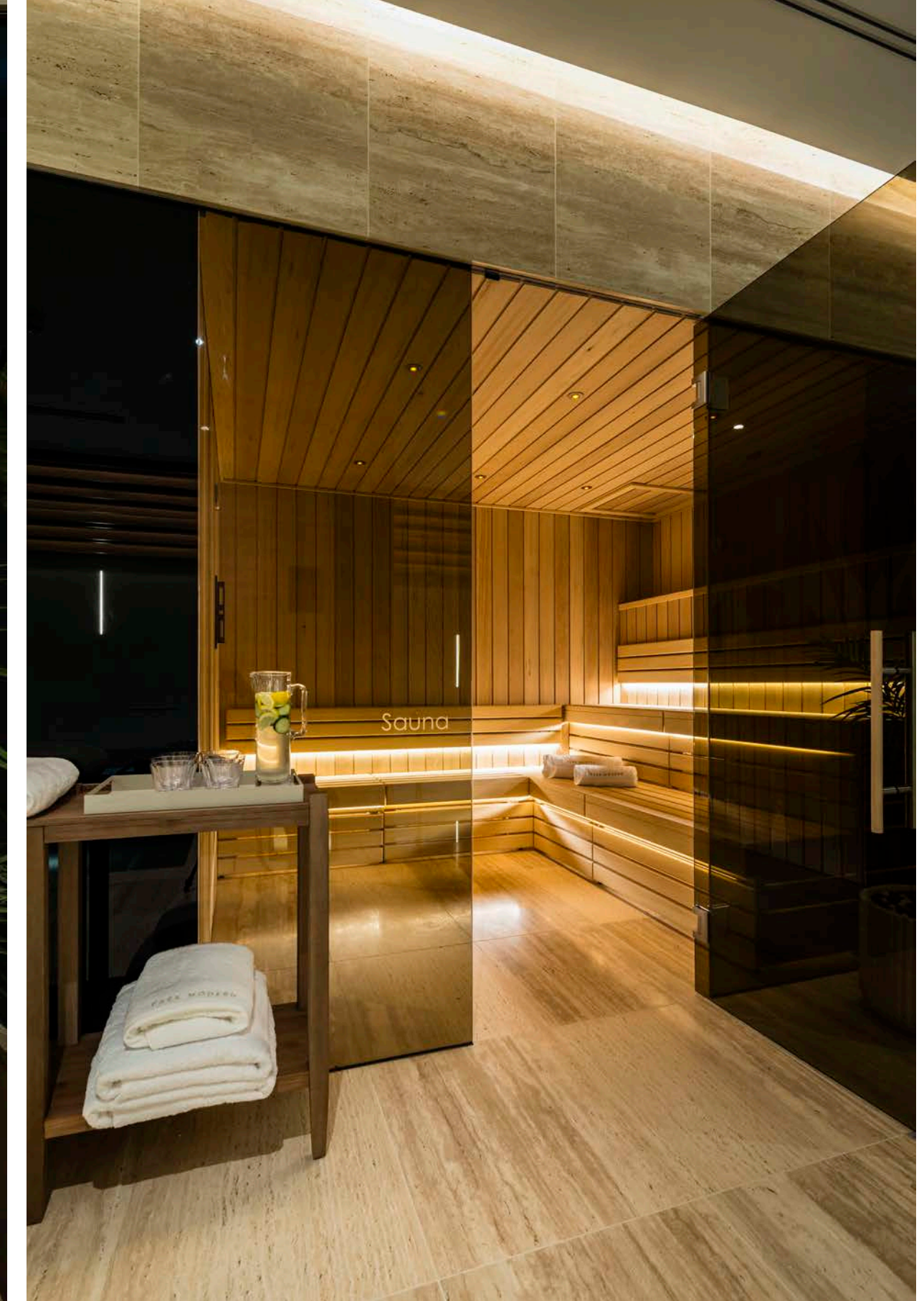


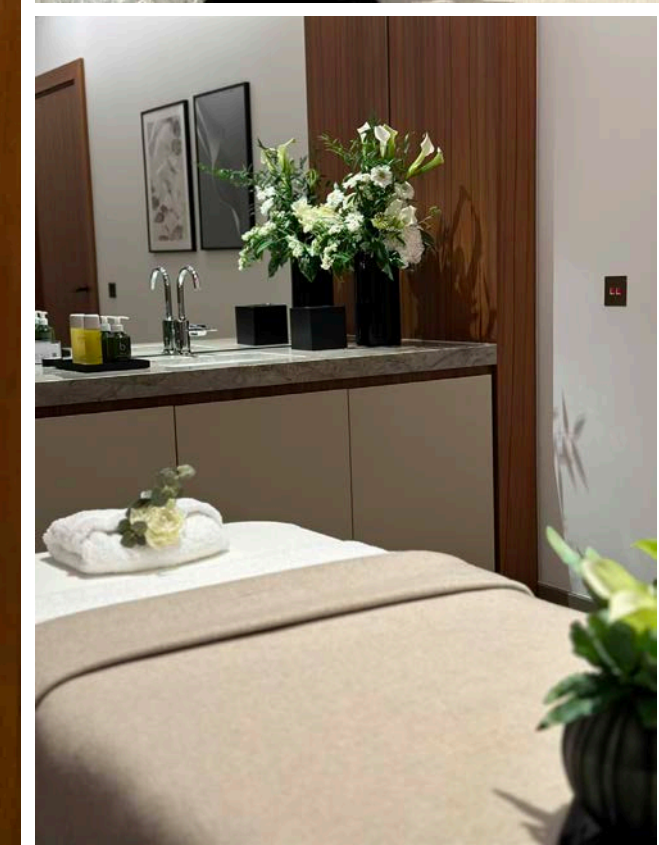








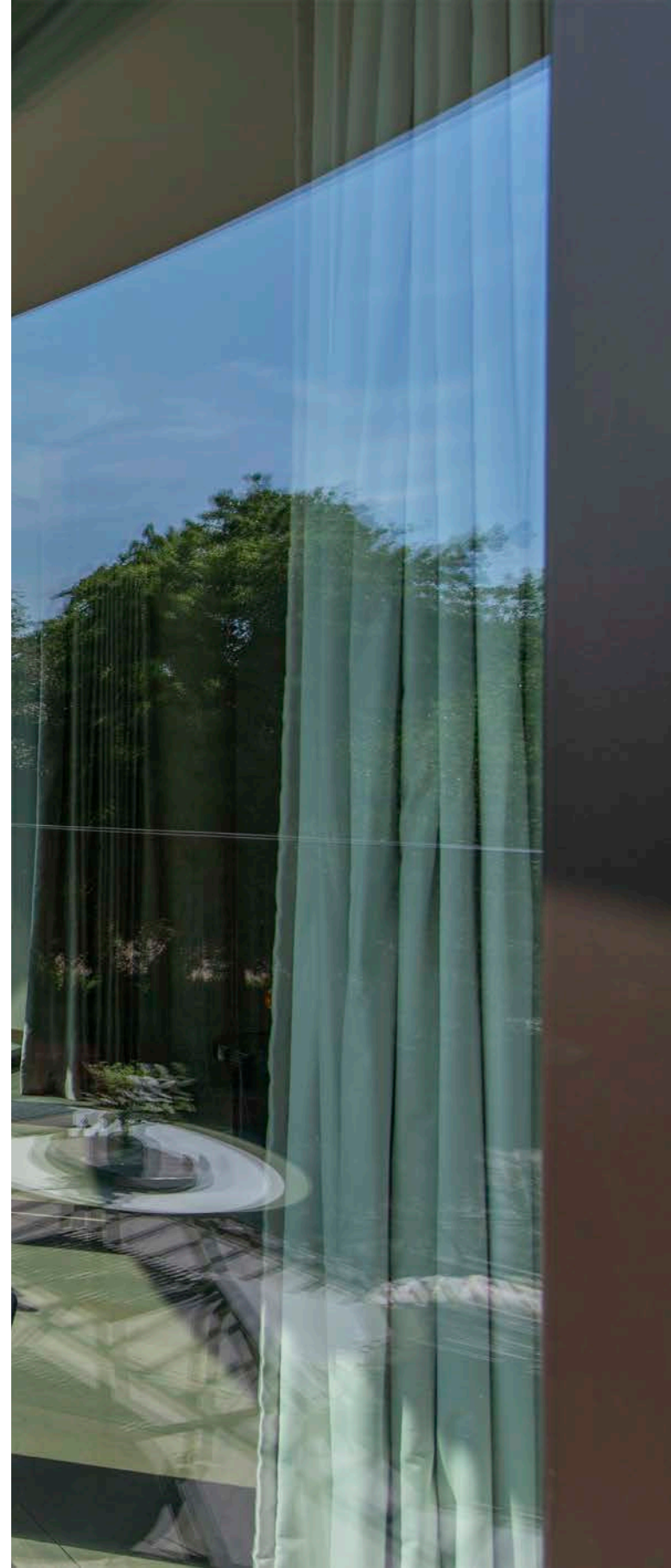




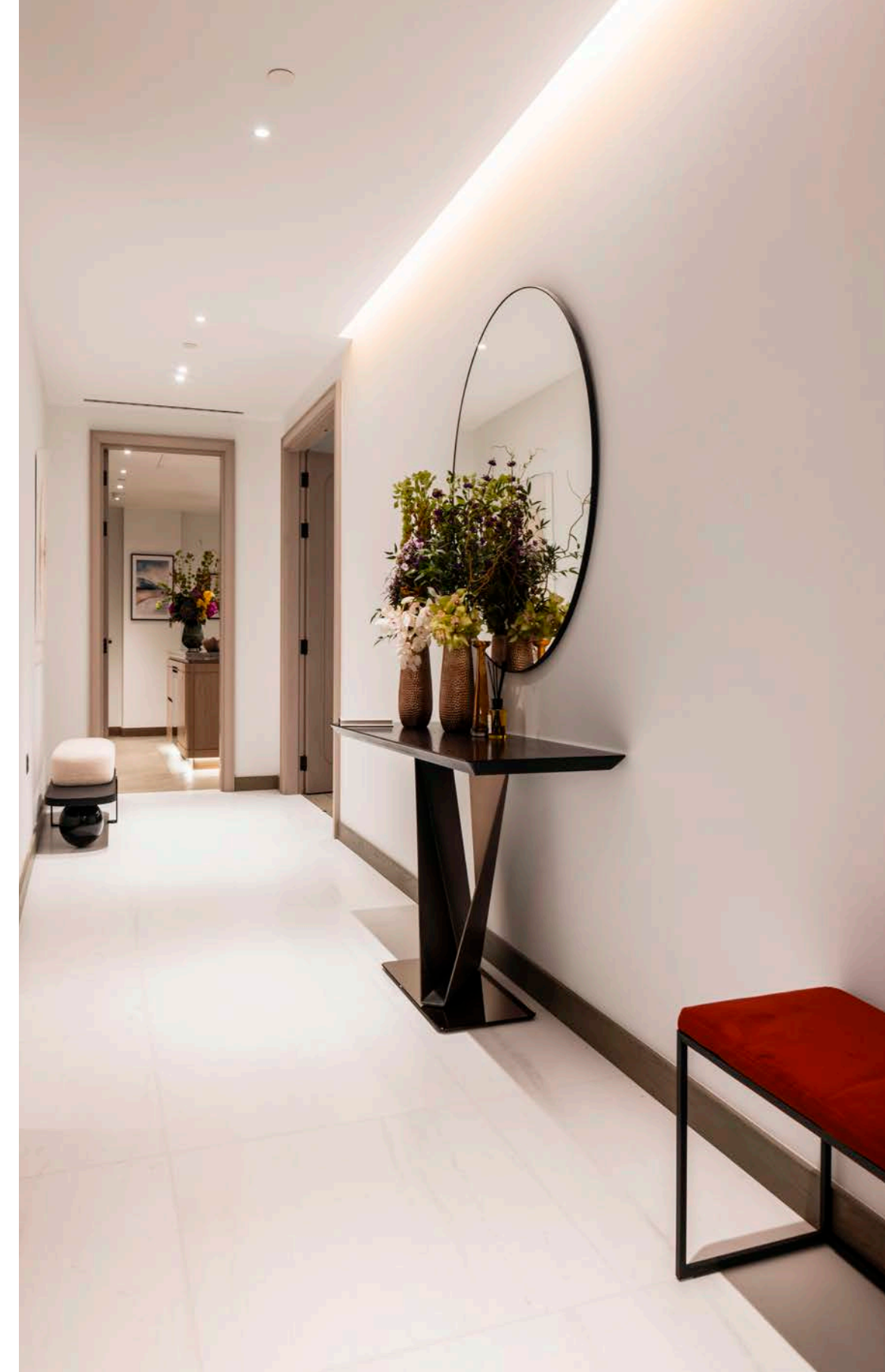


RESIDENCES



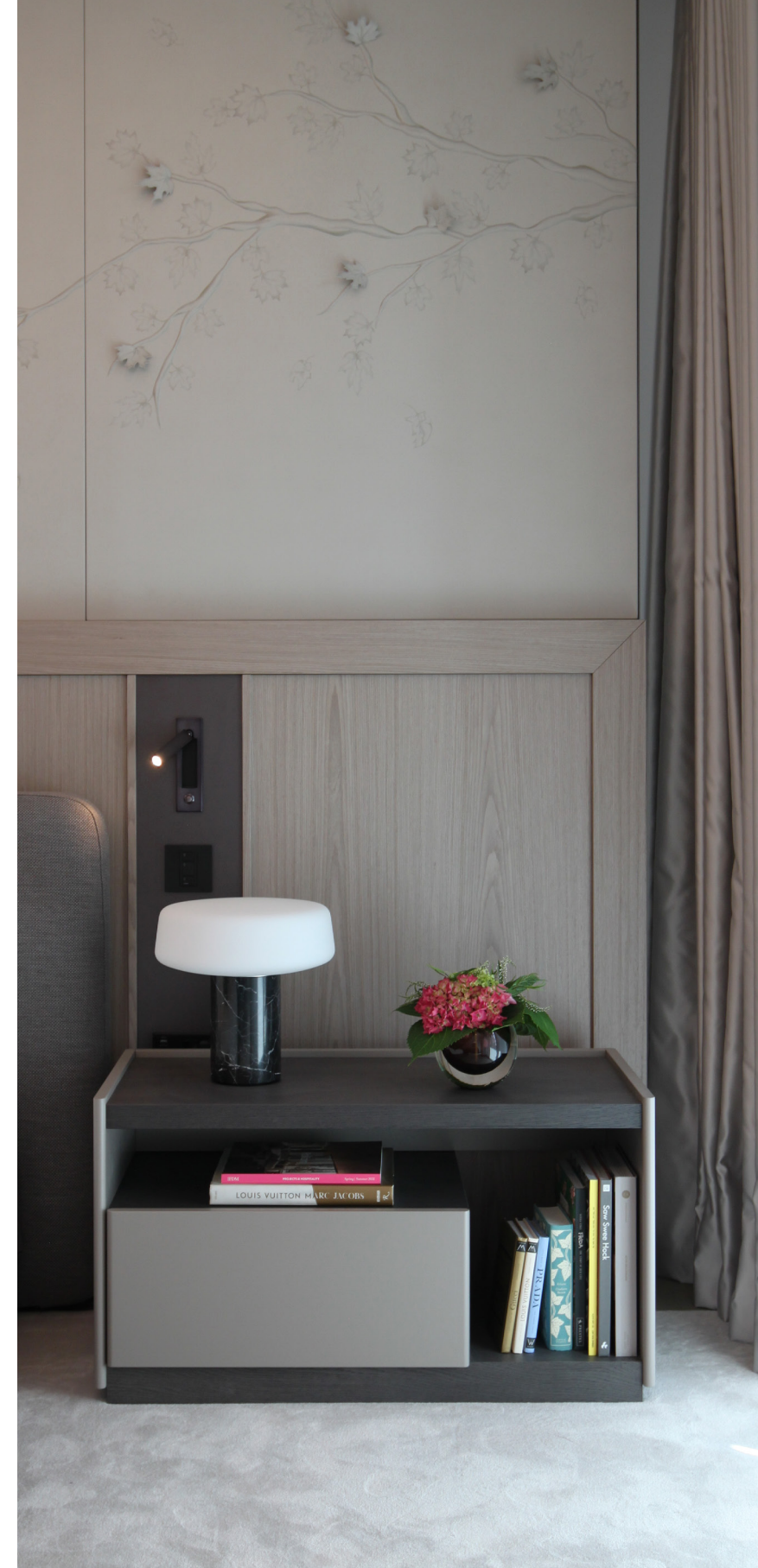




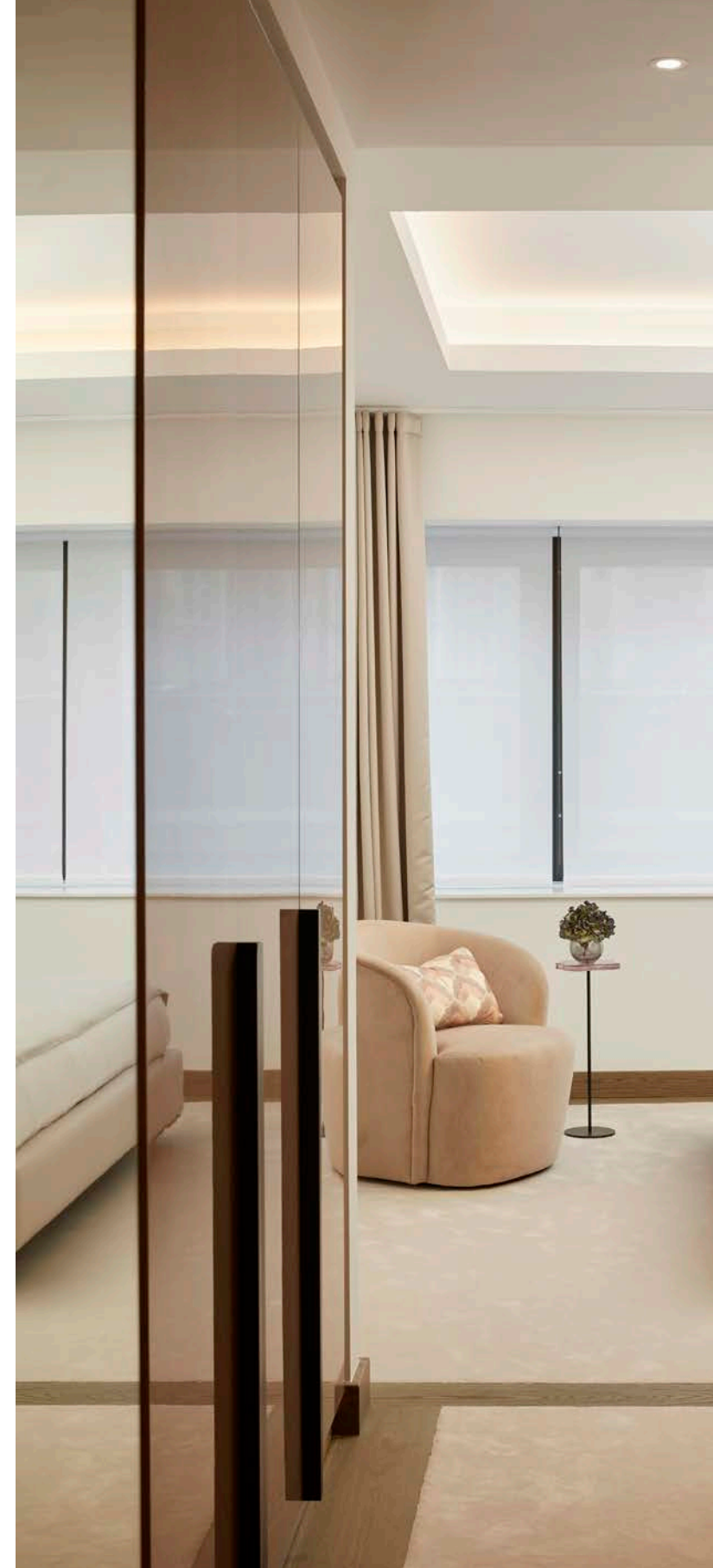






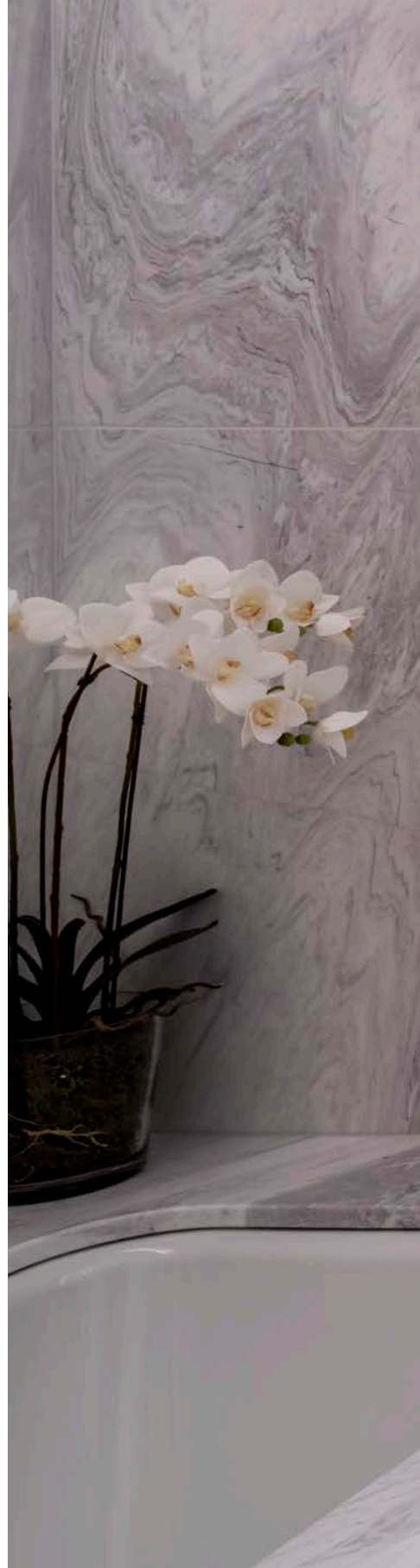
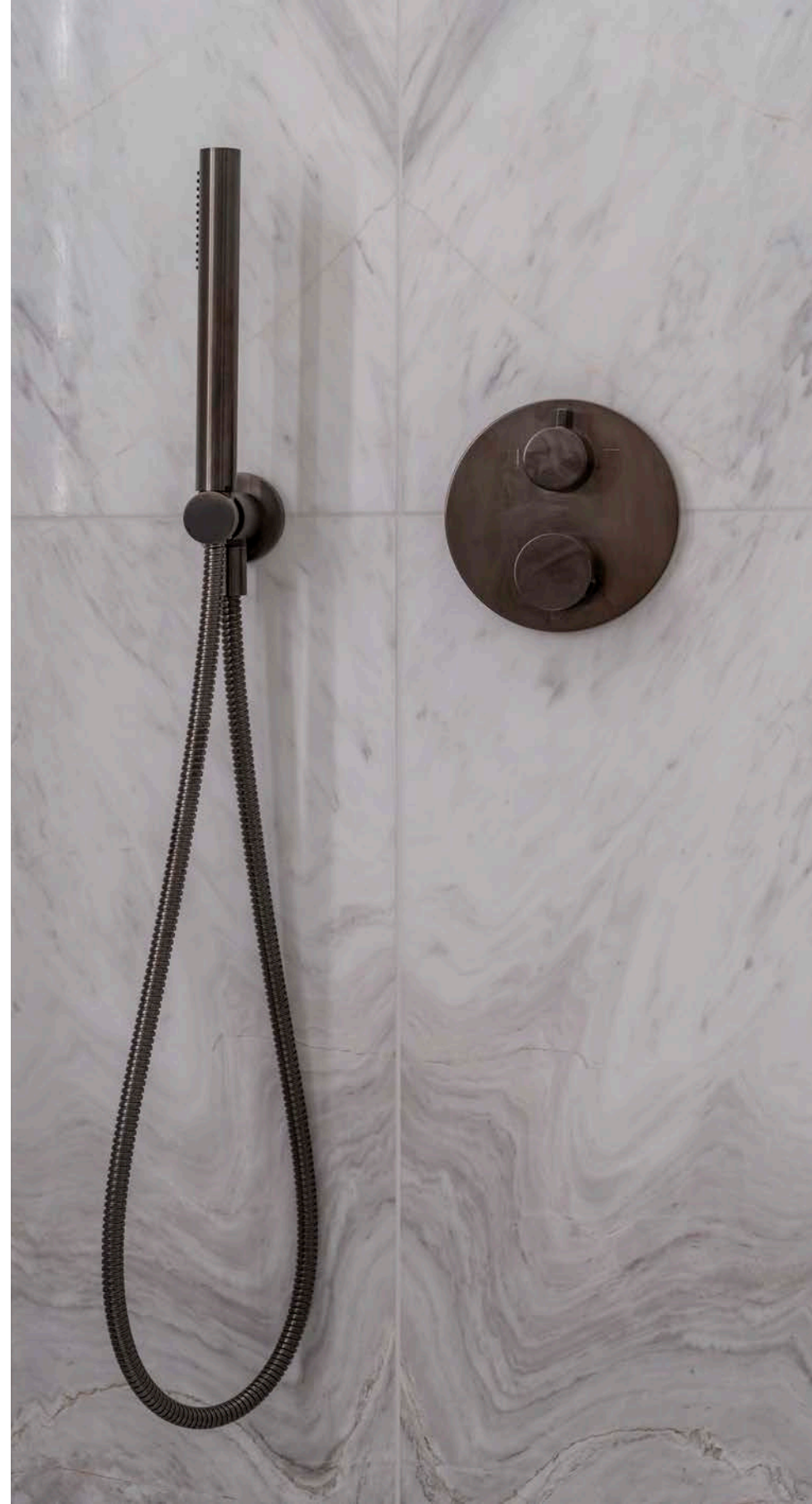














Park Modern is the finest new residential development on Hyde Park, overlooking the gardens of Kensington Palace. The large floor-to-ceiling windows flood the residences with natural light and frame spectacular south-facing views of the Royal Park and London's iconic skyline.

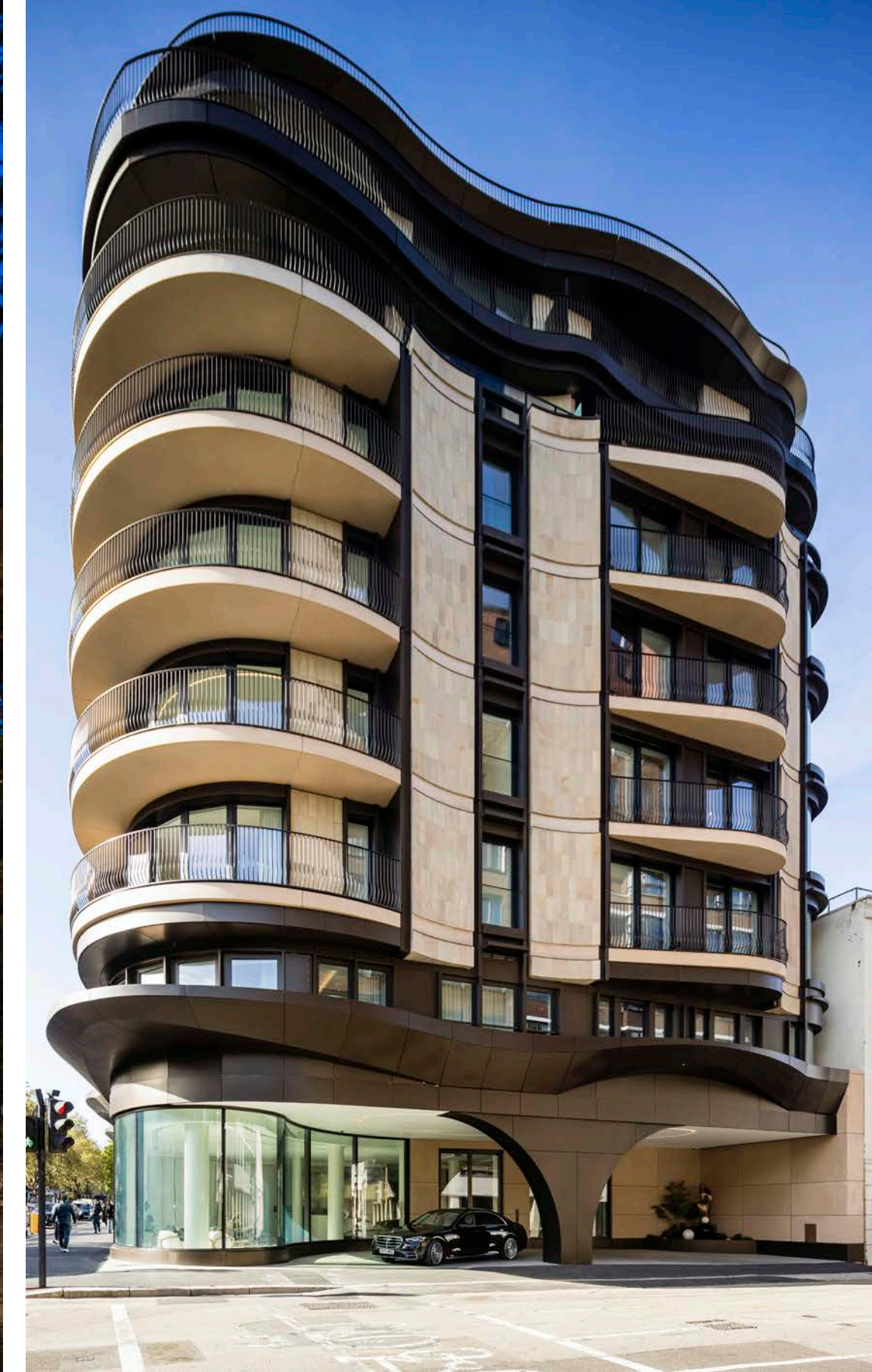
The building by award-winning developers Fenton Whelan will include 57 residences, including three penthouses with significant park-facing terraces and two mews houses.

Amenities include concierge and security, valet parking and private car park, 25m swimming pool, gym and spa, beauty salon and cinema.

Park Modern is well-connected to Mayfair and the City and only a short stroll away from vibrant Notting Hill.

Park Modern forms part of the £2 billion regeneration of Queensway which includes Fenton Whelan's new gates into the park.









For residents of Park Modern, the park is part of daily life. Hyde Park hosts a range of leisure activities as well as events such as the Serpentine Galleries Summer Pavilion, the British Summertime Hyde Park concert series and Winter Wonderland.

## DESIGN DEVELOPMENT

Please note that all aspects of the design development of Park Modern are continuously reviewed and Fenton Whelan Ltd reserve the right to make alterations without notice.  
All images are indicative only. © August 2021

## THE LEASE

999 years

## COPYRIGHT

Copyright for this document is retained by Fenton Whelan Ltd. The reproduction of the whole or any part of this document is strictly prohibited.

DEVELOPMENT BY  
**FENTON WHELAN**

PARK MODERN SALES



E: [PCLD@KNIGHTFRANK.COM](mailto:PCLD@KNIGHTFRANK.COM)  
T: (0)20 7861 5321



**FENTON WHELAN**

[parkmodern.com](http://parkmodern.com)