



Arundel Gardens, W11



An excellent opportunity to acquire a well-proportioned double bedroom flat in this popular block with access to and charming views over the stunning communal garden.

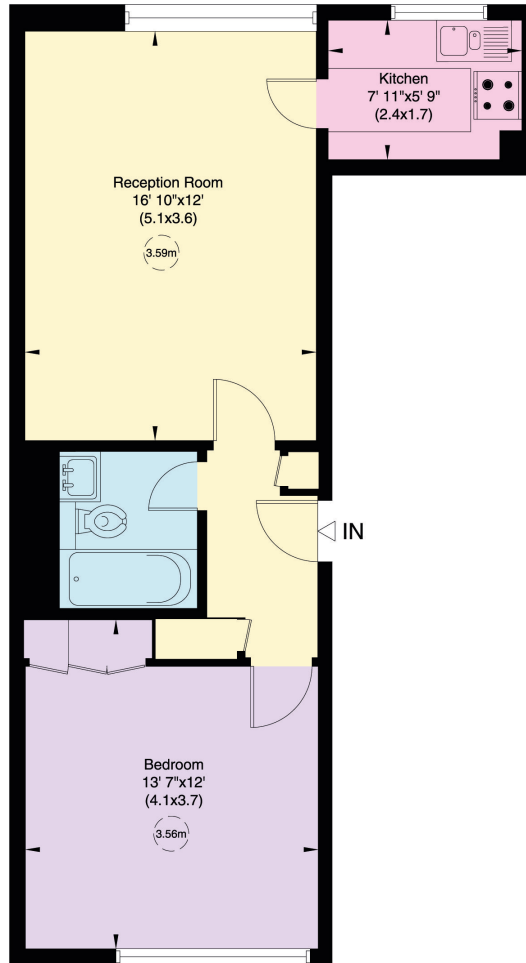
Arranged over the raised ground floor of this popular block this charming flat benefits from excellent room proportions with ceiling heights throughout over 3.6 metres,, good lateral space and delightful green views.

The apartment is in need of some modernization allowing an incoming buyer the opportunity to put their own stamp on it.



Arundel Gardens is a fashionable road right in the heart of Notting Hill, moments from Portobello Road. Close to renowned Westbourne Grove with a wealth of fashion boutiques, world class restaurants and luxury retailers. Some of the best preparatory schools in London are also within close proximity - Wetherby, Pembridge Hall, Chepstow House, Southbank International School, Notting Hill Prep to name a few. Notting Hill Gate Underground tube station is close by (Central, District and Circle lines) for access to The City





Approximate Gross Internal Floor Area
47 sq m/501 sq ft

This plan is for guidance only and must not be relied upon as a statement of fact. Attention is drawn to the Important Notice on the last page of the text of the Particulars

Upper Ground Floor

Knight Frank
 Notting Hill
 294 Westbourne Grove
 London

I would be delighted to tell you more.

Chelsea Whelan
 020 7229 0229
 chelsea.whelan@knightfrank.com

[knightfrank.co.uk](https://www.knightfrank.co.uk)



Connecting people & property, perfectly.

Fixtures and fittings: A list of the fitted carpets, curtains, light fittings and other items fixed to the property which are included in the sale (or may be available by separate negotiation) will be provided by the Seller's Solicitors.

Important Notice: 1. Particulars: These particulars are not an offer or contract, nor part of one. You should not rely on statements by Knight Frank LLP in the particulars or by word of mouth or in writing ("information") as being factually accurate about the property, its condition or its value. Neither Knight Frank LLP nor any joint agent has any authority to make any representations about the property, and accordingly any information given is entirely without responsibility on the part of the agents, seller(s) or lessor(s). 2. Photos, Videos etc: The photographs, property videos and virtual viewings etc. show only certain parts of the property as they appeared at the time they were taken. Areas, measurements and distances given are approximate only. 3. Regulations etc: Any reference to alterations to, or use of, any part of the property does not mean that any necessary planning, building regulations or other consent has been obtained. A buyer or lessee must find out by inspection or in other ways that these matters have been properly dealt with and that all information is correct. 4. VAT: The VAT position relating to the property may change without notice. 5. To find out how we process Personal Data, please refer to our Group Privacy Statement and other notices at <https://www.knightfrank.com/legals/privacy-statement>.

Particulars dated [xxxxxxxx 20xx]. Photographs and videos dated [xxxxxxxx 20xx].

Knight Frank is the trading name of Knight Frank LLP. Knight Frank LLP is a limited liability partnership registered in England and Wales with registered number OC305934. Our registered office is at 55 Baker Street, London W1U 8AN where you may look at a list of members' names. If we use the term 'partner' when referring to one of our representatives, that person will either be a member, employee, worker or consultant of Knight Frank LLP and not a partner in a partnership. If you do not want us to contact you further about our services then please contact us by either calling 020 3544 0692, email to marketing.help@knightfrank.com or post to our UK Residential Marketing Manager at our registered office (above) providing your name and address.