

St Stephen's Mews, Notting Hill

W2





Arranged over three floors, this extraordinarily beautiful mews house has been stunningly refurbished by its current owners incorporating style with well-balanced accommodation.

As you enter on the ground floor you are met with a casual reception room, a well-thought out utility room and a study or storage room. There is also a double bedroom with en-suite shower room.

The first floor features the stylish principal bedroom with superb storage space and sliding pocket doors through to the en-suite shower room. Adjacent is a walk in wardrobe positioned next to a family bathroom and a further bedroom with built in storage space.

The modern open plan reception room and kitchen occupies the whole of the second floor and is flooded with natural light. Floor to ceiling windows open out to the front of the house and a stylish skylight runs along the length of the rear.



St. Stephens Mews is a quiet and residential cul-de-sac mews situated just off the vibrant Westbourne Grove and short walking distance to the trendy Little Venice. The area is well connected via Royal Oak and Westbourne Park stations (Circle and Hammersmith & City lines) as well as a number of bus routes.

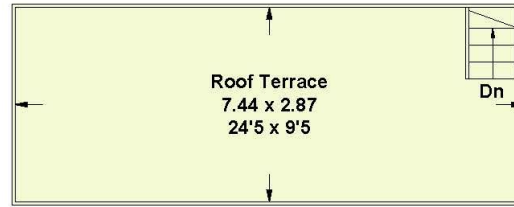


**Situated on this
quintessential cobbled
street.**





Second Floor



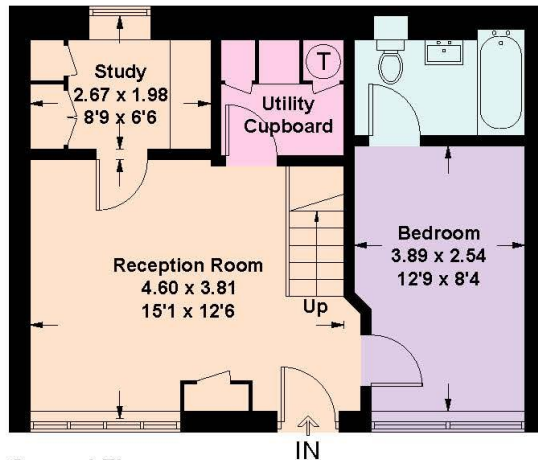
Third Floor

= Reduce head height below 1.5m

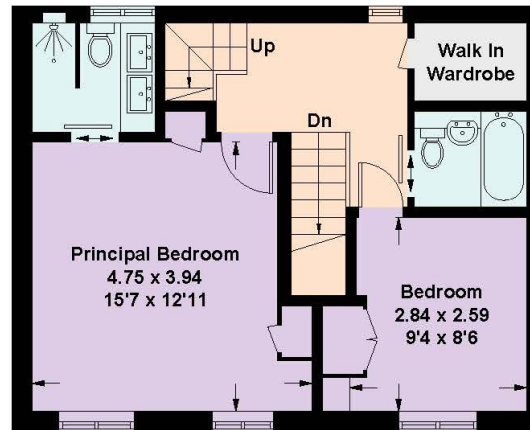


Approximate Gross Internal Floor Area
121.7 sq m/1310 sq ft

This plan is for guidance only and must not be relied upon as a statement of fact. Attention is drawn to the Important Notice on the last page of the text of the Particulars



Ground Floor



First Floor

This plan is for layout guidance only. Not drawn to scale unless stated. Windows and door openings are approximate. Whilst every care is taken in the preparation of this plan, please check all dimensions, shapes and compass bearings before making any decisions reliant upon them. (ID698574)

Knight Frank
 Notting Hill
 294 Westbourne Grove
 London

I would be delighted to tell you more.

Chelsea Whelan
 020 7229 0229
 chelsea.whelan@knightfrank.com

[knightfrank.co.uk](https://www.knightfrank.co.uk)



Connecting people & property, perfectly.

Fixtures and fittings: A list of the fitted carpets, curtains, light fittings and other items fixed to the property which are included in the sale (or may be available by separate negotiation) will be provided by the Seller's Solicitors.

Important Notice: 1. Particulars: These particulars are not an offer or contract, nor part of one. You should not rely on statements by Knight Frank LLP in the particulars or by word of mouth or in writing ("information") as being factually accurate about the property, its condition or its value. Neither Knight Frank LLP nor any joint agent has any authority to make any representations about the property, and accordingly any information given is entirely without responsibility on the part of the agents, seller(s) or lessor(s). 2. Photos, Videos etc: The photographs, property videos and virtual viewings etc. show only certain parts of the property as they appeared at the time they were taken. Areas, measurements and distances given are approximate only. 3. Regulations etc: Any reference to alterations to, or use of, any part of the property does not mean that any necessary planning, building regulations or other consent has been obtained. A buyer or lessee must find out by inspection or in other ways that these matters have been properly dealt with and that all information is correct. 4. VAT: The VAT position relating to the property may change without notice. 5. To find out how we process Personal Data, please refer to our Group Privacy Statement and other notices at <https://www.knightfrank.com/legals/privacy-statement>.

Particulars dated [xxxxxxxx 20xx]. Photographs and videos dated [xxxxxxxx 20xx].

Knight Frank is the trading name of Knight Frank LLP. Knight Frank LLP is a limited liability partnership registered in England and Wales with registered number OC305934. Our registered office is at 55 Baker Street, London W1U 8AN where you may look at a list of members' names. If we use the term 'partner' when referring to one of our representatives, that person will either be a member, employee, worker or consultant of Knight Frank LLP and not a partner in a partnership. If you do not want us to contact you further about our services then please contact us by either calling 020 3544 0692, email to marketing.help@knightfrank.com or post to our UK Residential Marketing Manager at our registered office (above) providing your name and address.