

Leinster Square, Notting Hill

W11





A well presented and neutrally designed three bedroom apartment situated in a beautiful period conversion.

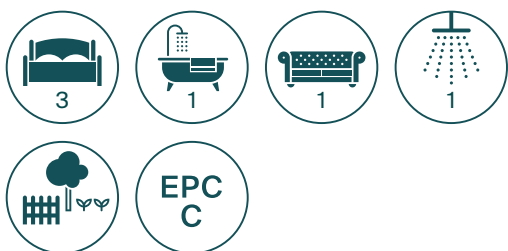
The apartment is arranged over the lower ground floor and accommodates a great entertaining space, featuring wooden flooring throughout and a modern mounted electric fire place.

The kitchen is separate and offers a fully integrated unit.

The apartment provides three proportioned bedrooms, one benefitting from an en suite bathroom. There is a separate shower room and plentiful storage space.

Access is provided to the shared garden as well as the beautiful communal gardens.

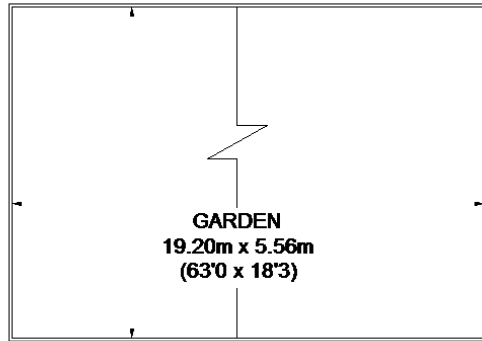
Additionally the apartment is Share of Freehold.



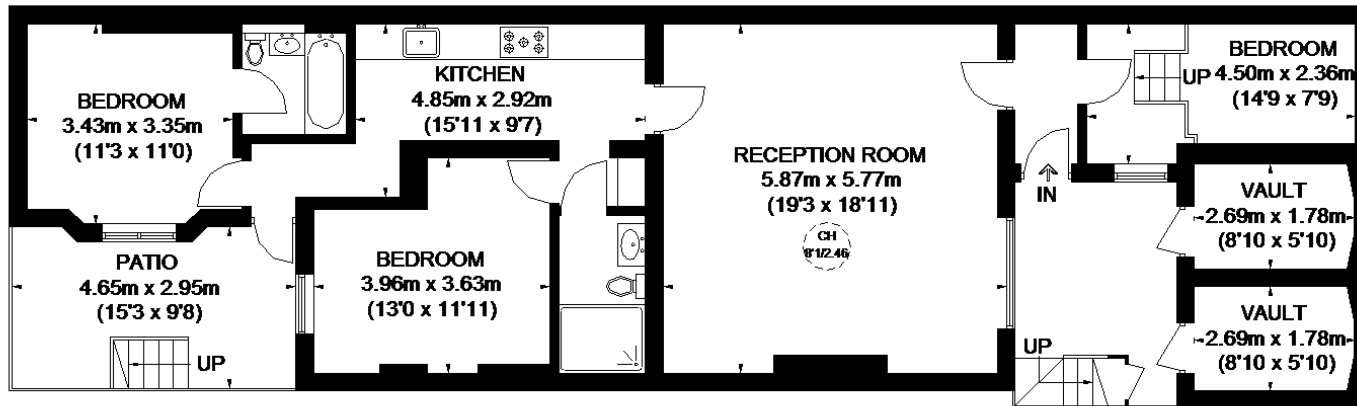
Leinster Square is well located for the local amenities of Westbourne Grove; providing cafes, coffee shops and restaurants. Portobello Road is also located close for further cafes, bouiques and the world famous market. The apartment is within close distance to green spaces such as Kensington Gardens. The property is also very well positioned for transport as a number of bus routes run along Westbourne Grove and Bayswater Underground station (District & Circle line) is within a short walk.



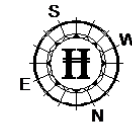
LEINSTER SQUARE



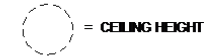
GROUND FLOOR



LOWER GROUND FLOOR



APPROXIMATE GROSS INTERNAL AREA
LOWER GROUND FLOOR
1033 SQ. FT. (96.0 SQ. M.)
VAULTS = 102 SQ. FT. (9.5 SQ. M.)
TOTAL = 1135 SQ. FT. (105.5 SQ. M.)



This plan is for guidance only and must not be relied upon as a statement of fact. Attention is drawn to the Important Notice on the last page of the text of the Particulars

Knight Frank
Notting Hill
294 Westbourne Grove
London

I would be delighted to tell you more.

Chelsea Whelan
020 7229 0229
chelsea.whelan@knightfrank.com

[knightfrank.co.uk](https://www.knightfrank.co.uk)



Connecting people & property, perfectly.

Fixtures and fittings: A list of the fitted carpets, curtains, light fittings and other items fixed to the property which are included in the sale (or may be available by separate negotiation) will be provided by the Seller's Solicitors.

Important Notice: 1. Particulars: These particulars are not an offer or contract, nor part of one. You should not rely on statements by Knight Frank LLP in the particulars or by word of mouth or in writing ("information") as being factually accurate about the property, its condition or its value. Neither Knight Frank LLP nor any joint agent has any authority to make any representations about the property, and accordingly any information given is entirely without responsibility on the part of the agents, seller(s) or lessor(s). 2. Photos, Videos etc: The photographs, property videos and virtual viewings etc. show only certain parts of the property as they appeared at the time they were taken. Areas, measurements and distances given are approximate only. 3. Regulations etc: Any reference to alterations to, or use of, any part of the property does not mean that any necessary planning, building regulations or other consent has been obtained. A buyer or lessee must find out by inspection or in other ways that these matters have been properly dealt with and that all information is correct. 4. VAT: The VAT position relating to the property may change without notice. 5. To find out how we process Personal Data, please refer to our Group Privacy Statement and other notices at <https://www.knightfrank.com/legals/privacy-statement>.

Particulars dated February 2021. Photographs and videos dated February 2021.

Knight Frank is the trading name of Knight Frank LLP. Knight Frank LLP is a limited liability partnership registered in England and Wales with registered number OC305934. Our registered office is at 55 Baker Street, London W1U 8AN where you may look at a list of members' names. If we use the term 'partner' when referring to one of our representatives, that person will either be a member, employee, worker or consultant of Knight Frank LLP and not a partner in a partnership. If you do not want us to contact you further about our services then please contact us by either calling 020 3544 0692, email to marketing.help@knightfrank.com or post to our UK Residential Marketing Manager at our registered office (above) providing your name and address.