

Clanricarde Gardens, Notting Hill

W2





Situated in a charming, period mansion block, a 2 bedroom lower ground floor apartment.

The apartment is neutrally decorated and bright throughout and is the perfect place to put your own stamp on. Located off the entrance hallway there is a spacious reception / dining room with double fronted window to allow plentiful light.

The kitchen is separate and features a white gloss unit and plenty of cupboard space.

Two well proportioned bedrooms are towards the rear of the apartment with the principal bedroom suite having a skylight. Between both bedrooms is a lightwell, perfect for some outside space.

Additional benefits include a 125 year lease.

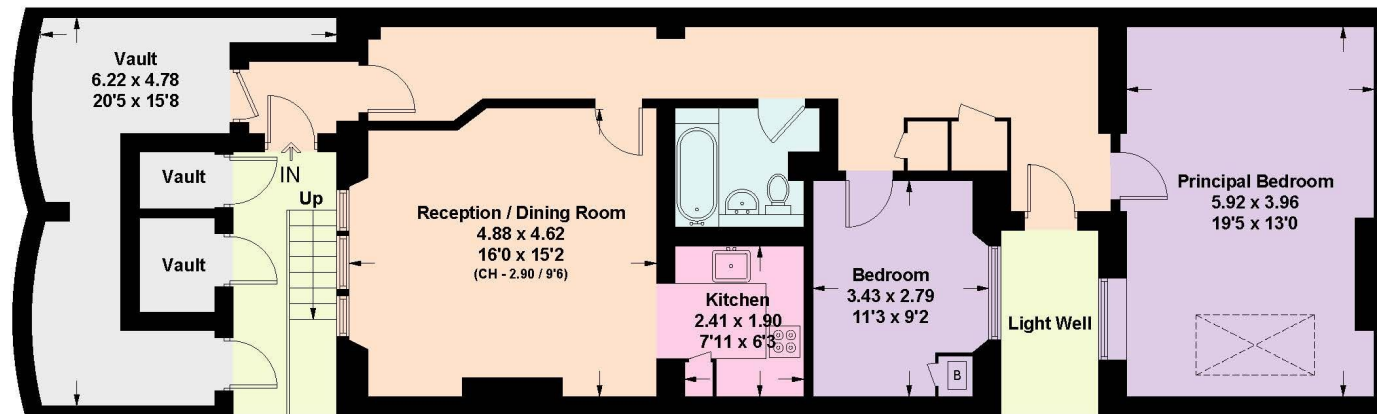


Clanricarde Gardens is ideally located off Bayswater Road and a short walk to the green spaces of Kensington Gardens and the excellent transport connections of Notting Hill Gate underground station (District, Circle and Central lines).



Clanricarde Gardens, W2

Approximate Floor Area = 91.6 sq m / 986 sq ft
Vaults = 19.3 sq m / 208 sq ft
Total = 110.9 sq m / 1194 sq ft
Including Limited Use Area (0.6 sq m / 6 sq ft)



Lower Ground Floor

This plan is for guidance only and must not be relied upon as a statement of fact. Attention is drawn to the Important Notice on the last page of the text of the Particulars

Knight Frank
Notting Hill
294 Westbourne Grove
London

I would be delighted to tell you more.

Chelsea Whelan
020 7229 0229
chelsea.whelan@knightfrank.com

[knightfrank.co.uk](https://www.knightfrank.co.uk)



Connecting people & property, perfectly.

Fixtures and fittings: A list of the fitted carpets, curtains, light fittings and other items fixed to the property which are included in the sale (or may be available by separate negotiation) will be provided by the Seller's Solicitors.

Important Notice: 1. Particulars: These particulars are not an offer or contract, nor part of one. You should not rely on statements by Knight Frank LLP in the particulars or by word of mouth or in writing ("information") as being factually accurate about the property, its condition or its value. Neither Knight Frank LLP nor any joint agent has any authority to make any representations about the property, and accordingly any information given is entirely without responsibility on the part of the agents, seller(s) or lessor(s). 2. Photos, Videos etc: The photographs, property videos and virtual viewings etc. show only certain parts of the property as they appeared at the time they were taken. Areas, measurements and distances given are approximate only. 3. Regulations etc: Any reference to alterations to, or use of, any part of the property does not mean that any necessary planning, building regulations or other consent has been obtained. A buyer or lessee must find out by inspection or in other ways that these matters have been properly dealt with and that all information is correct. 4. VAT: The VAT position relating to the property may change without notice. 5. To find out how we process Personal Data, please refer to our Group Privacy Statement and other notices at <https://www.knightfrank.com/legals/privacy-statement>.

Particulars dated October 2021. Photographs and videos dated October 2021.

Knight Frank is the trading name of Knight Frank LLP. Knight Frank LLP is a limited liability partnership registered in England and Wales with registered number OC305934. Our registered office is at 55 Baker Street, London W1U 8AN where you may look at a list of members' names. If we use the term 'partner' when referring to one of our representatives, that person will either be a member, employee, worker or consultant of Knight Frank LLP and not a partner in a partnership. If you do not want us to contact you further about our services then please contact us by either calling 020 3544 0692, email to marketing.help@knightfrank.com or post to our UK Residential Marketing Manager at our registered office (above) providing your name and address.