



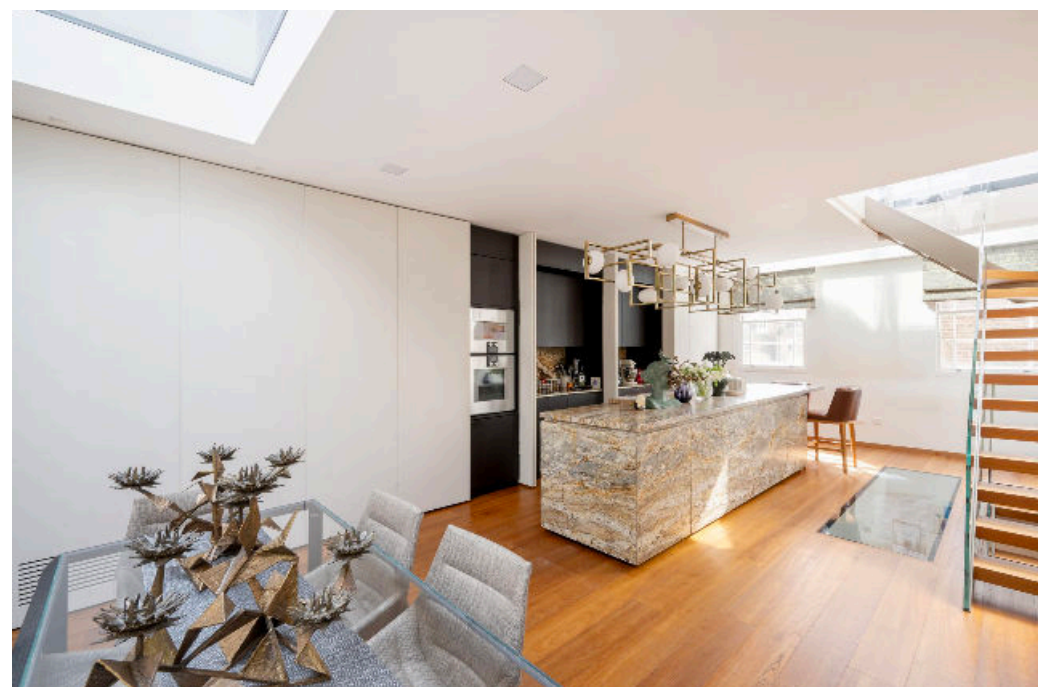
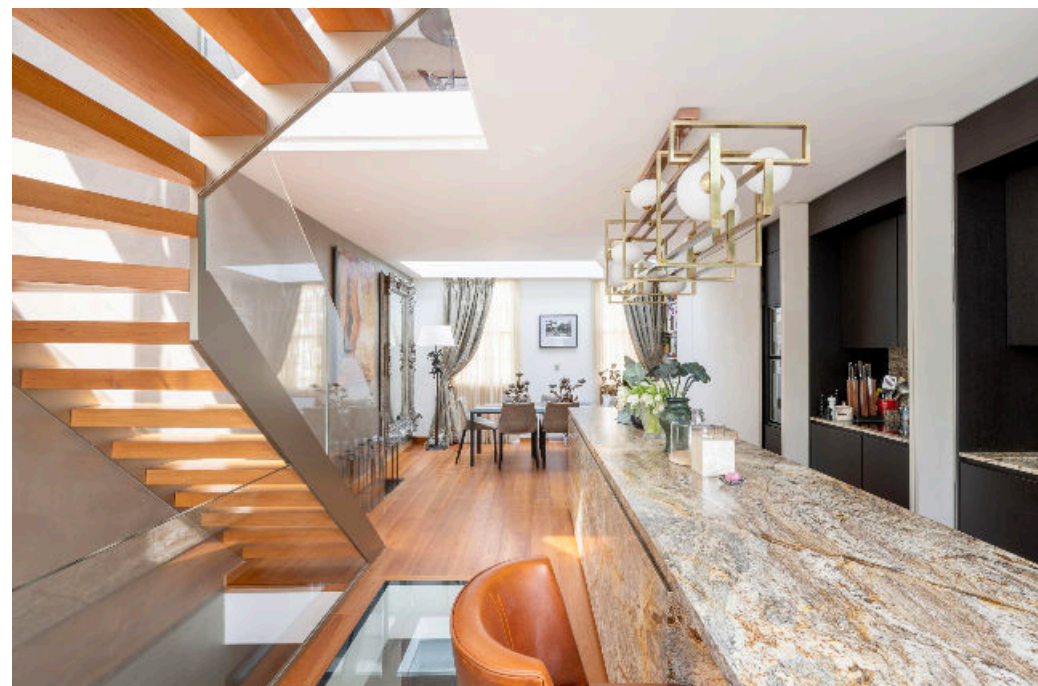
Powis Terrace, Notting Hill **W11**



Powis Terrace, Notting Hill **W11**

A stunning two-bedroom apartment spread over three floors of a terrace building, offering more than 1300 sq ft of living space.

As you enter from the ground floor and head up to the first floor, you are greeted with the first of three outstanding roof terraces. On this floor, there is a double bedroom, a bathroom and the principal bedroom which is almost five metres in width and is complete with an elegant en-suite.



Guide price: £2,800,000

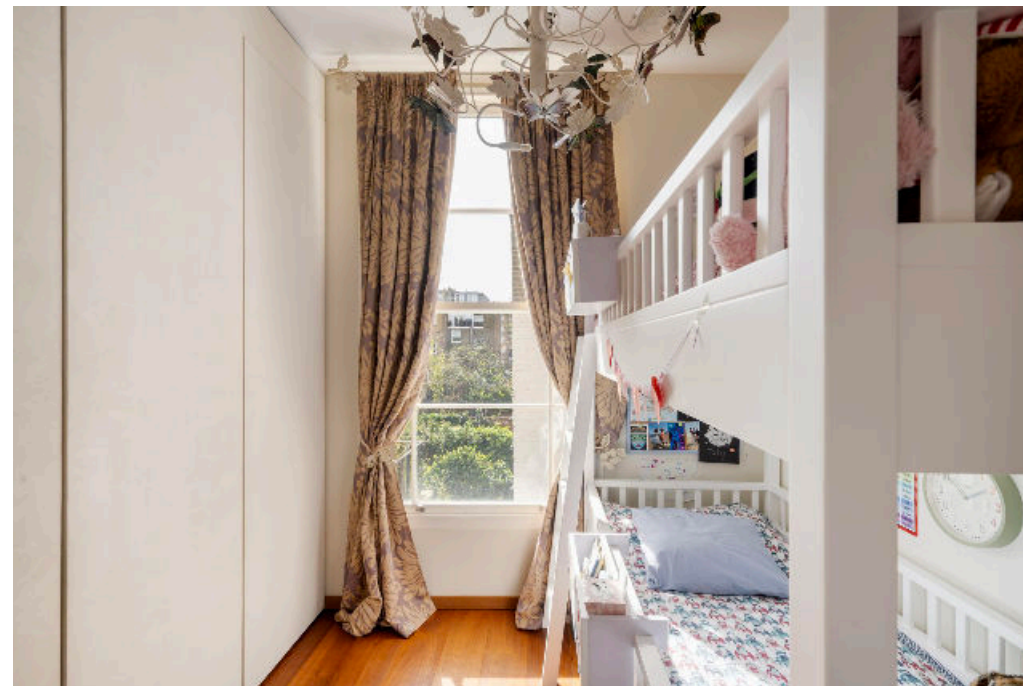
Tenure: Share of freehold plus leasehold, approximately 160 years remaining

Local authority: Royal Borough of Kensington & Chelsea

Council tax band: F

An aesthetically designed staircase brings you to the second floor which features an open-plan kitchen and dining room. The kitchen units have folding doors to hide appliances, making it perfect for when entertaining guests. The grand kitchen island is the centrepiece of this incredible space, with its striking design. The room is filled with light from windows on the south and north aspects.

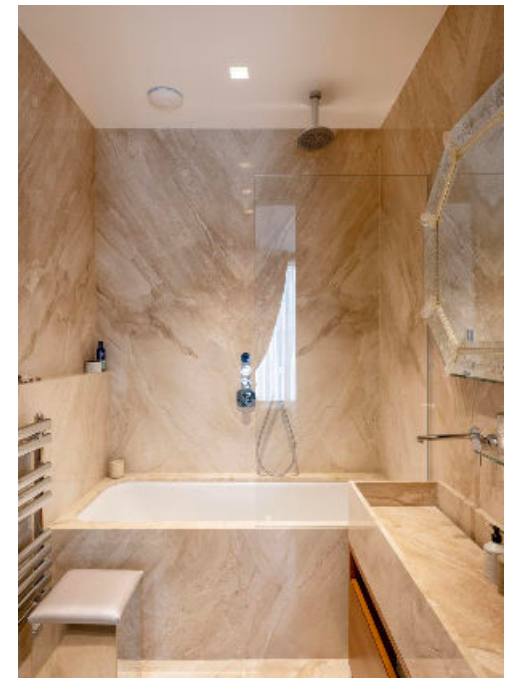
The fourth floor is home to a generally proportioned reception room with full-length glass on either side that lets in copious levels of natural light. The reception room has two roof terraces, one on the north and the other on the south side, completing the ample amount of outdoor space that this apartment offers.



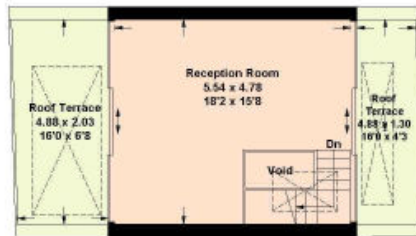




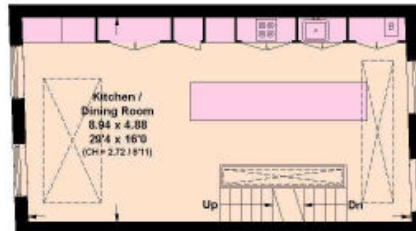
Powis Terrace is a charming residential street in the heart of Notting Hill. The lively market of Portobello Road is only a short stroll away, as are fantastic local pubs and restaurants, such as The Cow and The Oak. There are many well-connected transport options nearby, including Westbourne Park Station which offers trouble-free connections via the Circle and Hammersmith and City Line.



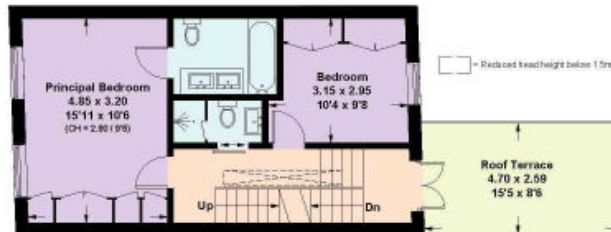
Powis Terrace, Notting Hill W11



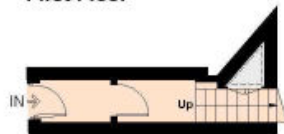
Third Floor



Second Floor



First Floor



Ground Floor

**Approximate Gross Internal Floor Area
122.1 sq m / 1314 sq ft**

This plan is for guidance only and must not be relied upon as a statement of fact. Attention is drawn to the important notice on the last page of the text of the Particulars.

Knight Frank
Notting Hill
294 Westbourne Grove
London W11 2PS

I would be delighted to tell you more

Jack Thomas
020 3910 9732
jack.thomas@knightfrank.com



Fixtures and fittings: A list of the fitted carpets, curtains, light fittings and other items fixed to the property which are included in the sale (or may be available by separate negotiation) will be provided by the Seller's Solicitors.

Important Notice: 1. Particulars: These particulars are not an offer or contract, nor part of one. You should not rely on statements by Knight Frank LLP in the particulars or by word of mouth or in writing ("information") as being factually accurate about the property, its condition or its value. Neither Knight Frank LLP nor any joint agent has any authority to make any representations about the property, and accordingly any information given is entirely without responsibility on the part of the agents, seller(s) or lessor(s). 2. Photos, Videos etc: The photographs, property videos and virtual viewings etc. show only certain parts of the property as they appeared at the time they were taken. Areas, measurements and distances given are approximate only. 3. Regulations etc: Any reference to alterations to, or use of, any part of the property does not mean that any necessary planning, building regulations or other consent has been obtained. A buyer or lessee must find out by inspection or in other ways that these matters have been properly dealt with and that all information is correct. 4. VAT: The VAT position relating to the property may change without notice. 5. To find out how we process Personal Data, please refer to our Group Privacy Statement and other notices at <https://www.knightfrank.com/legals/privacy-statement>. Particulars dated April 2024. Photographs and videos dated April 2024.

All information is correct at the time of going to print. Knight Frank is the trading name of Knight Frank LLP. Knight Frank LLP is a limited liability partnership registered in England and Wales with registered number OC305934. Our registered office is at 55 Baker Street, London W1U 8AN. We use the term 'partner' to refer to a member of Knight Frank LLP or an employee or consultant. A list of members names of Knight Frank LLP may be inspected at our registered office. If you do not want us to contact you further about our services then please contact us by either calling 020 3544 0692, email to marketing.help@knightfrank.com or post to our UK Residential Marketing Manager at our registered office (above) providing your name and address.