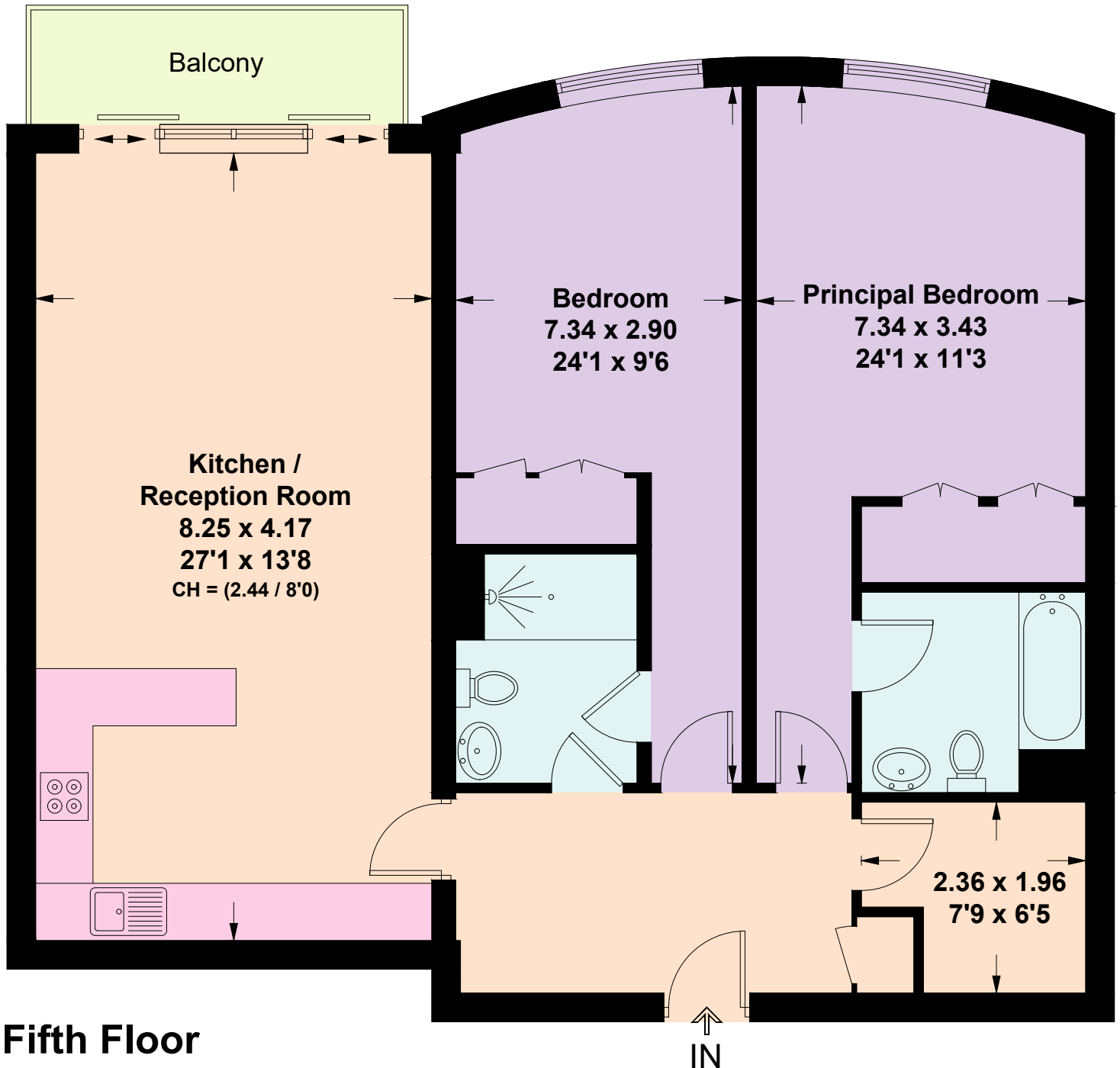


Hereford Road, W2

Approximate Gross Internal Area = 98.6 sq m / 1061 sq ft
Including Limited Use Area (0.2 sq m / 2 sq ft)



Fifth Floor



This plan is for layout guidance only. Not drawn to scale unless stated. Windows and door openings are approximate. Whilst every care is taken in the preparation of this plan, please check all dimensions, shapes and compass bearings before making any decisions reliant upon them. (ID1204142)