

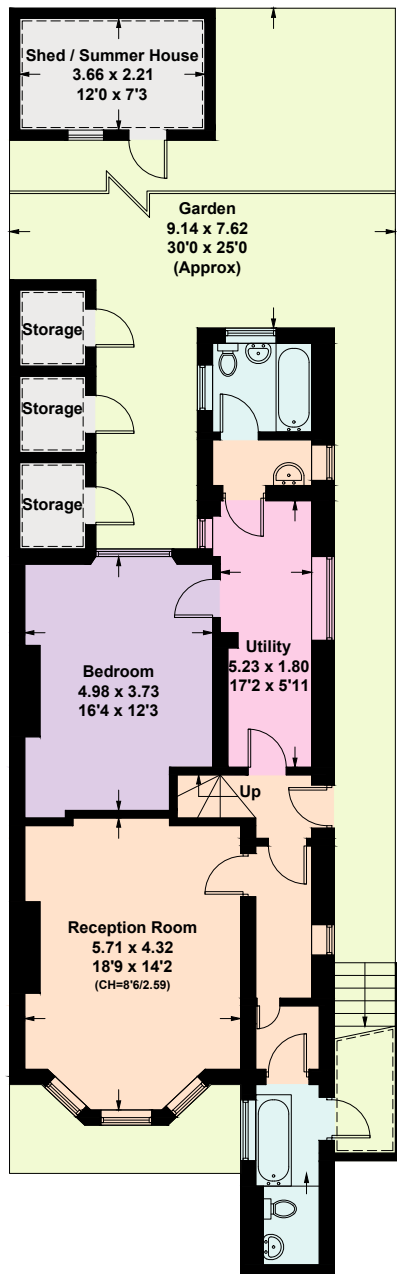
Leamington Road Villas, W11

Approximate Gross Internal Area = 266.7 sq m / 2871 sq ft

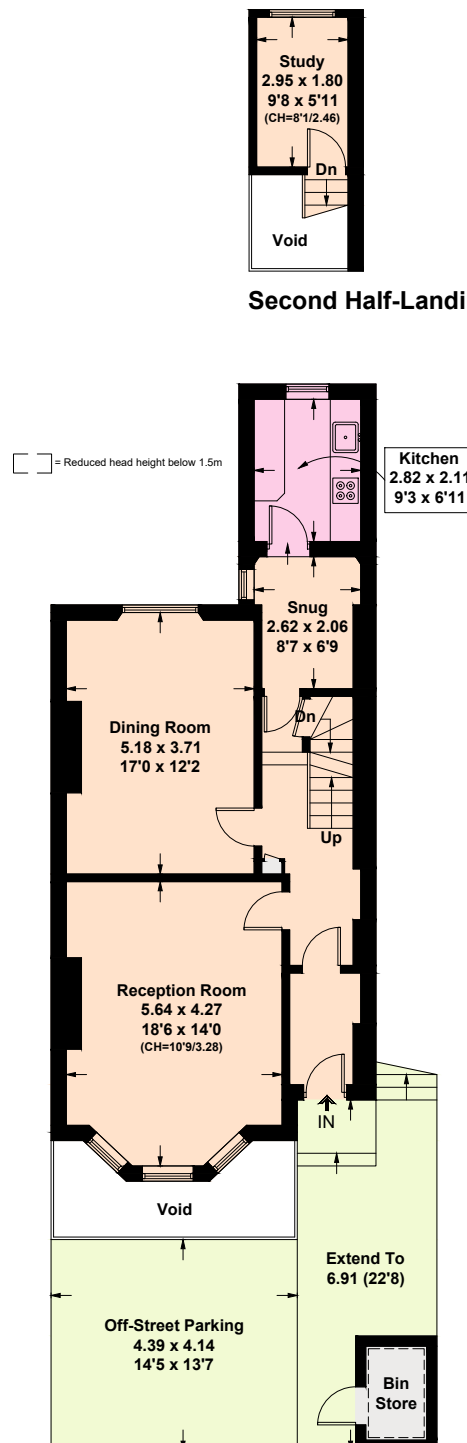
Outbuildings = 16.9 sq m / 182 sq ft

Total = 283.6 sq m / 3053 sq ft

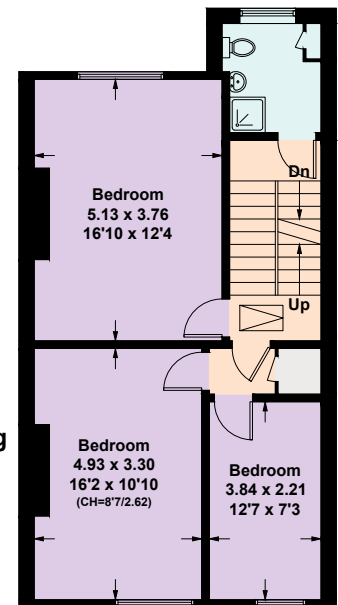
Including Limited Use Area (16.4 sq m / 176 sq ft) & Excluding Void



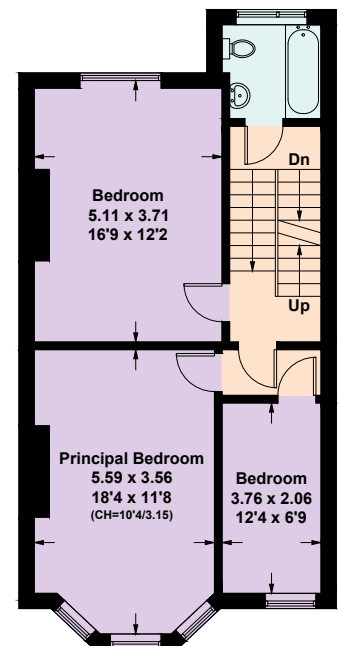
Lower Ground Floor



Raised Ground Floor



Second Floor



First Floor



This plan is for layout guidance only. Not drawn to scale unless stated. Windows and door openings are approximate. Whilst every care is taken in the preparation of this plan, please check all dimensions, shapes and compass bearings before making any decisions reliant upon them. (ID1173635)