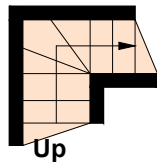


# Ladbroke Walk, W11

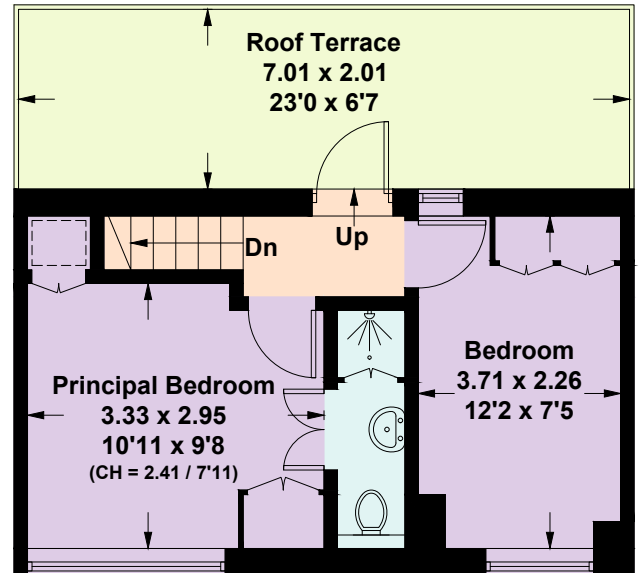


Approximate Gross Internal Area = 111.8 sq m / 1203 sq ft  
Including Limited Use Area (3.4 sq m / 36 sq ft)

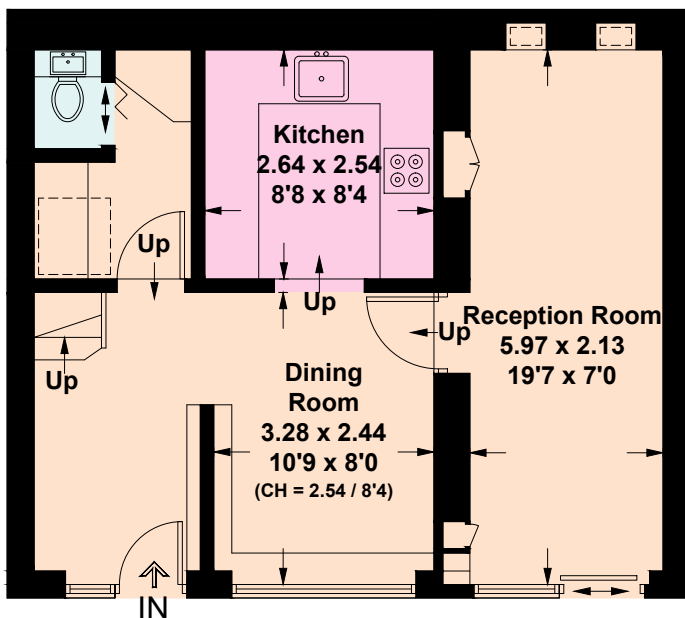
[ ] = Reduced head height below 1.5m



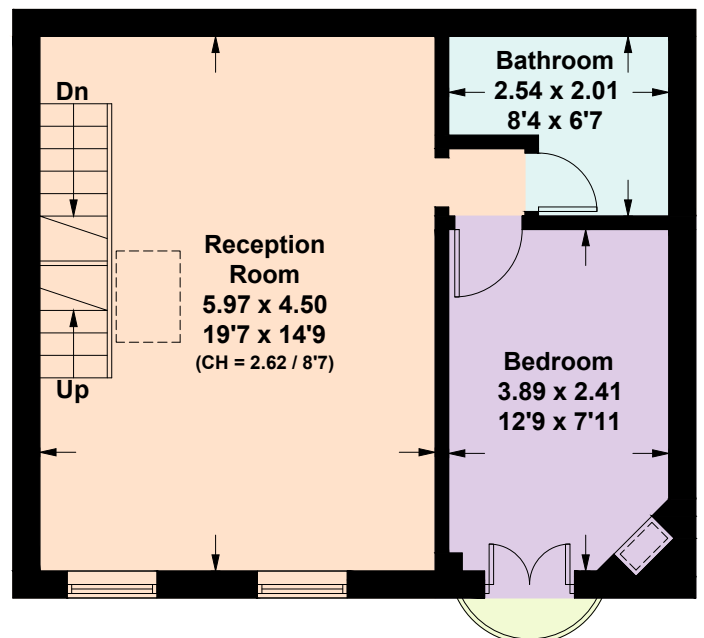
Half Landing



Second Floor



Ground Floor



First Floor



This plan is for layout guidance only. Not drawn to scale unless stated. Windows and door openings are approximate. Whilst every care is taken in the preparation of this plan, please check all dimensions, shapes and compass bearings before making any decisions reliant upon them. (ID1160583)