

St. Anns Road, Notting Hill W11



St. Anns Road, Notting Hill W11

This superb period property is arranged over four floors offering impressive volume throughout with fantastic balance of living space.

Three elegant French windows lead out of the double reception over what must be the finest garden aspect in Holland Park. With an open-plan kitchen/reception also leading to the garden, the perfect space for entertaining.

The bedrooms occupy the two upper floors with the main bedroom situated on its own floor and accommodating a spacious dressing area, en suite bathroom and direct access to a wonderful decked terrace.

A beautifully bright and spacious house.



Guide price: £2,850,000

Tenure: Available freehold

Local authority: Royal Borough of Kensington and Chelsea

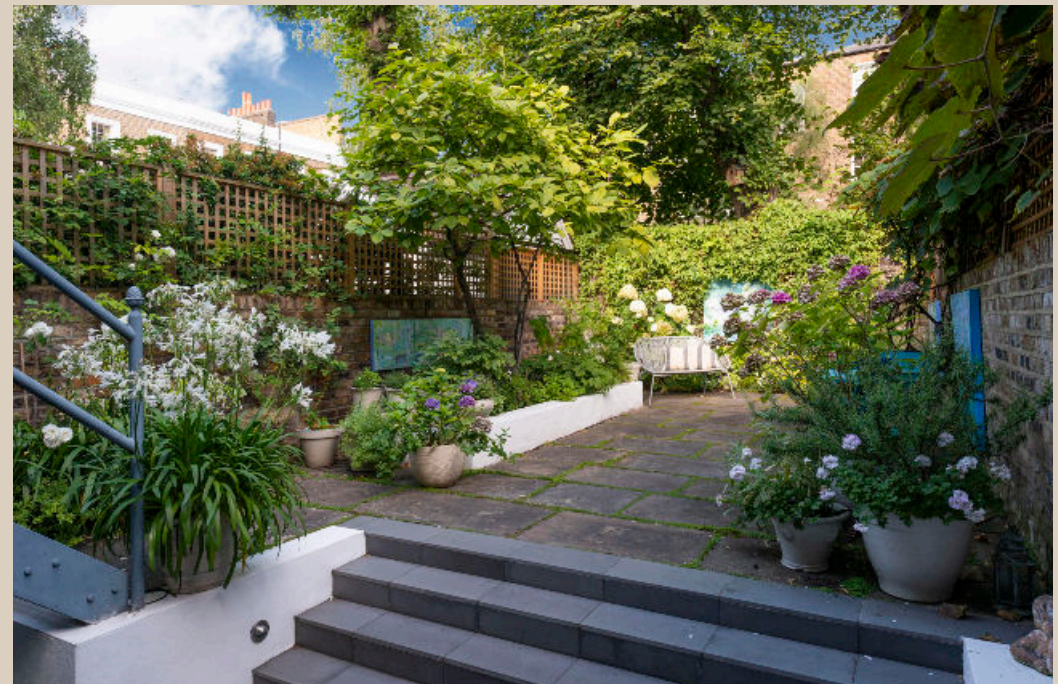
Council tax band: G

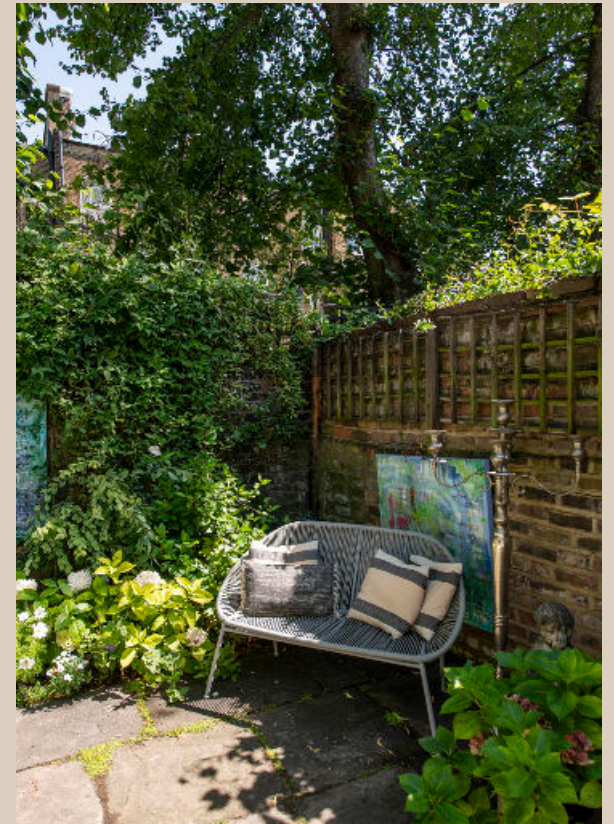
Location Description

St Anns Road is in proximity to excellent local amenities of Holland Park Avenue and within walking distance of Westfield Shopping Centre.

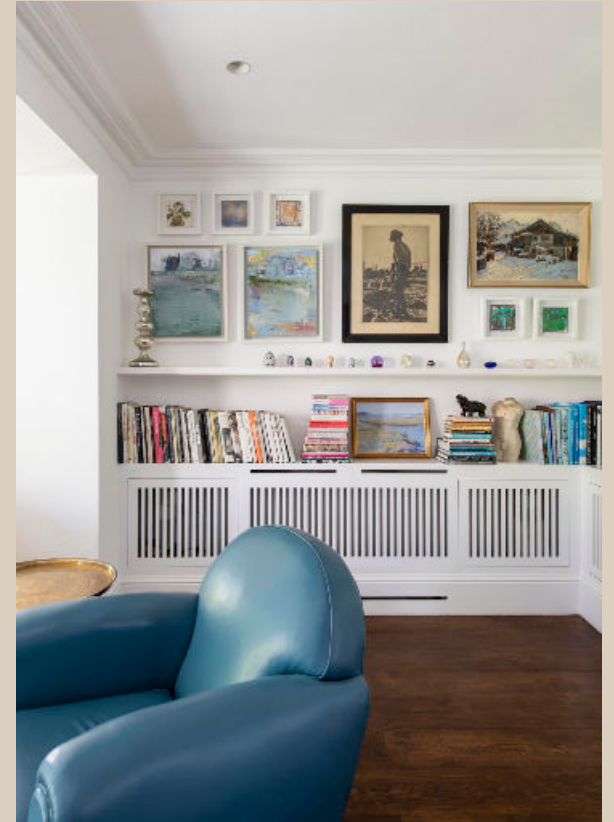
The nearest Underground station is Holland Park (Central Line) providing access to Central London.

Green spaces of Holland Park are also within short reach.

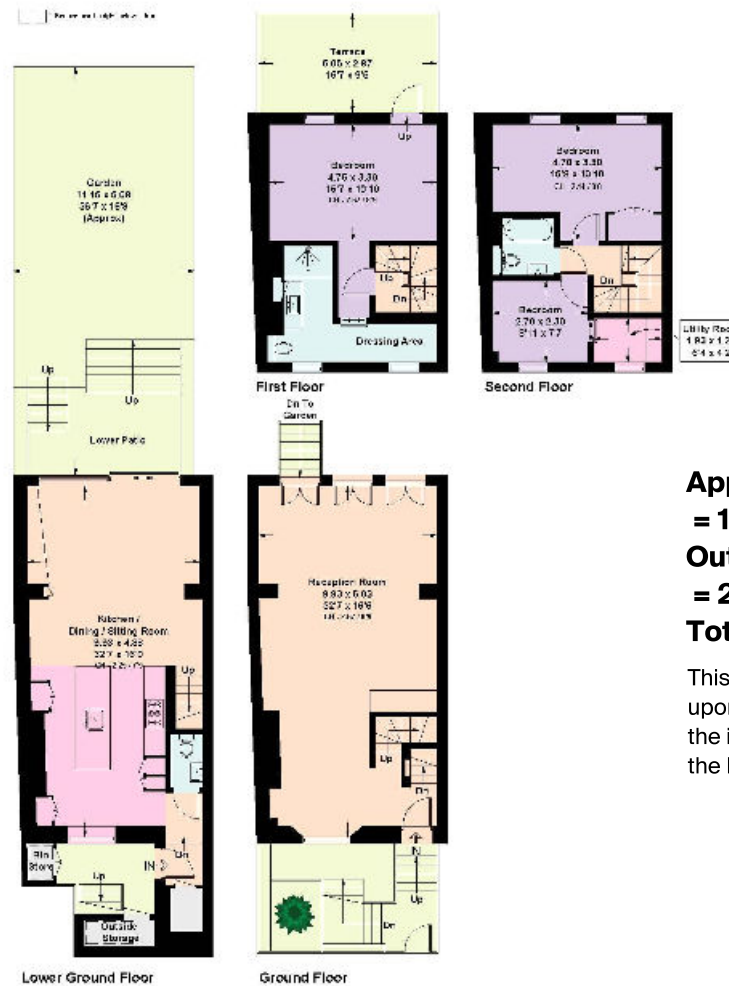








St. Anns Road, Notting Hill W11



**Approximate Gross Internal Floor Area
= 164.9 sq m / 1775 sq ft.
Outside storage space/ Bin store
= 2.3 sq m / 25 sq ft.
Total = 167.2 sq m / 1800 sq ft.**

This plan is for guidance only and must not be relied upon as a statement of fact. Attention is drawn to the important notice on the last page of the text of the Particulars.

Knight Frank
Notting Hill
294 Westbourne Grove
London W11 2PS

We would be delighted to tell you more
Will Gregory
020 3866 7835
will.gregory@knightfrank.com



Fixtures and fittings: A list of the fitted carpets, curtains, light fittings and other items fixed to the property which are included in the sale (or may be available by separate negotiation) will be provided by the Seller's Solicitors.
Important Notice: 1. Particulars: These particulars are not an offer or contract, nor part of one. You should not rely on statements by Knight Frank LLP in the particulars or by word of mouth or in writing ("information") as being factually accurate about the property, its condition or its value. Neither Knight Frank LLP nor any joint agent has any authority to make any representations about the property, and accordingly any information given is entirely without responsibility on the part of the agents, seller(s) or lessor(s). 2. Photos, Videos etc: The photographs, property videos and virtual viewings etc. show only certain parts of the property as they appeared at the time they were taken. Areas, measurements and distances given are approximate only. 3. Regulations etc: Any reference to alterations to, or use of, any part of the property does not mean that any necessary planning, building regulations or other consent has been obtained. A buyer or lessee must find out by inspection or in other ways that these matters have been properly dealt with and that all information is correct. 4. VAT: The VAT position relating to the property may change without notice. 5. To find out how we process Personal Data, please refer to our Group Privacy Statement and other notices at <https://www.knightfrank.com/legals/privacy-statement>.
Particulars dated August 2023. Photographs and videos dated August 2023.
Knight Frank is the trading name of Knight Frank LLP. Knight Frank LLP is a limited liability partnership registered in England and Wales with registered number OC305934. Our registered office is at 55 Baker Street, London W1U 8AN where you may look at a list of members' names. If we use the term 'partner' when referring to one of our representatives, that person will either be a member, employee, worker or consultant of Knight Frank LLP and not a partner in a partnership. If you do not want us to contact you further about our services then please contact us by either calling 020 3544 0692, email to marketing.help@knightfrank.com or post to our UK Residential Marketing Manager at our registered office (above) providing your name and address.