

The Willows - Lincombe Lane

Approximate Gross Internal Area

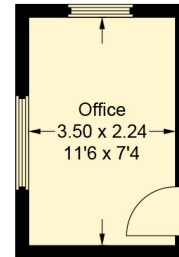
Ground Floor = 106.5 sq m / 1,146 sq ft

First Floor = 100.9 sq m / 1,086 sq ft

Lodge = 45.2 sq m / 486 sq ft

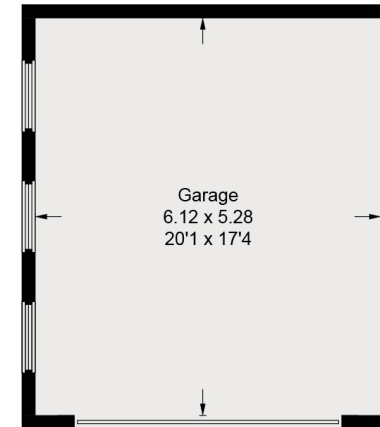
Garage / Office = 40.2 sq m / 433 sq ft

Total = 292.8 sq m / 3,151 sq ft

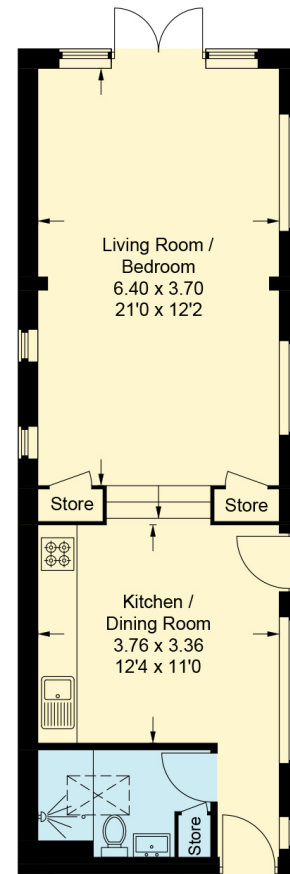
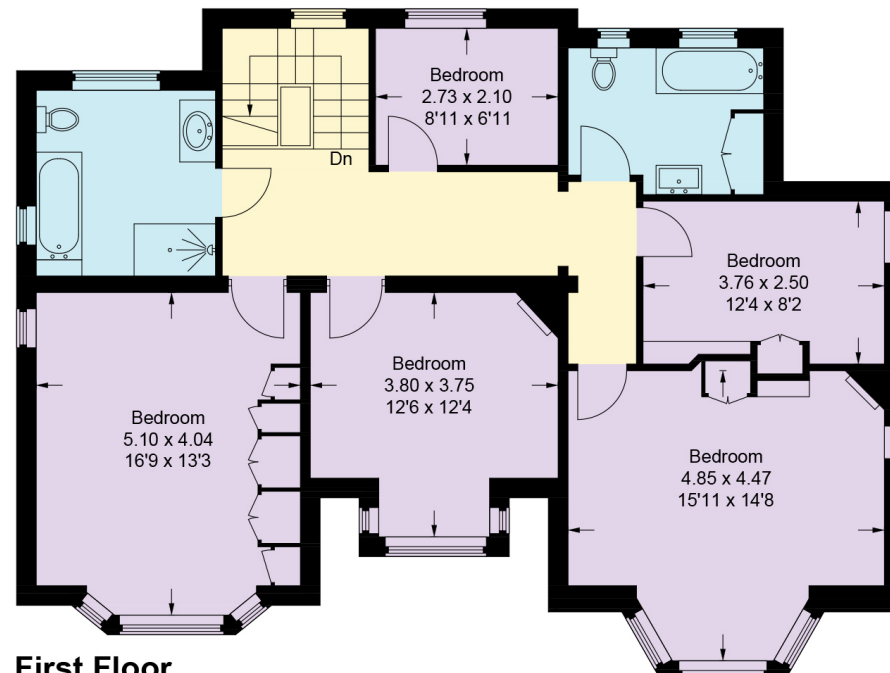
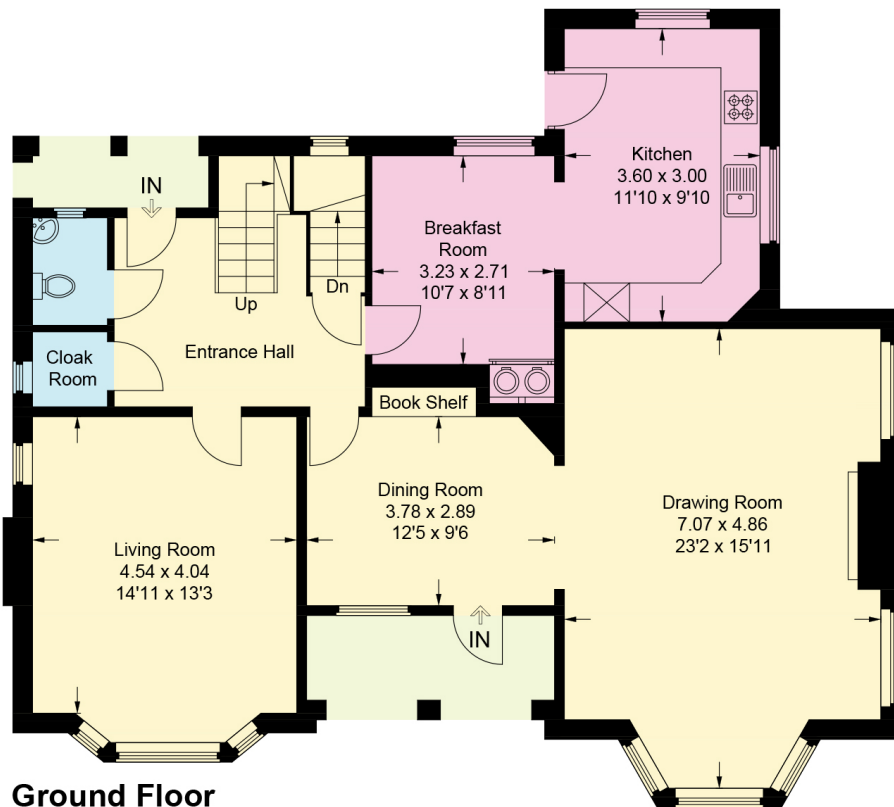


(Not Shown In Actual Location / Orientation)

Outbuilding



(Not Shown In Actual Location / Orientation)



This plan is for layout guidance only. Not drawn to scale unless stated. Windows and door openings are approximate. Whilst every care is taken in the preparation of this plan, please check all dimensions, shapes and compass bearings before making any decisions reliant upon them.