



Boars Hill, Oxford





Radcliffe House

An impressive country house with separate accommodation and 1.7 acres on the edge of Oxford.



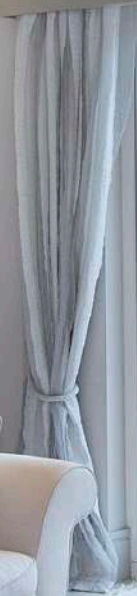
Guide price: £6,500,000

Tenure: Available freehold

Local authority: Vale of White Horse District Council

Council tax band: H





The Property

A substantial house with over 7500 sqft of beautifully presented accommodation over three floors. There is a separate garage block with a flat above and a swimming pool with a summer pavilion. It is well-placed for Oxford schools and commuters, with access via A34 to M4, M40 and Heathrow.

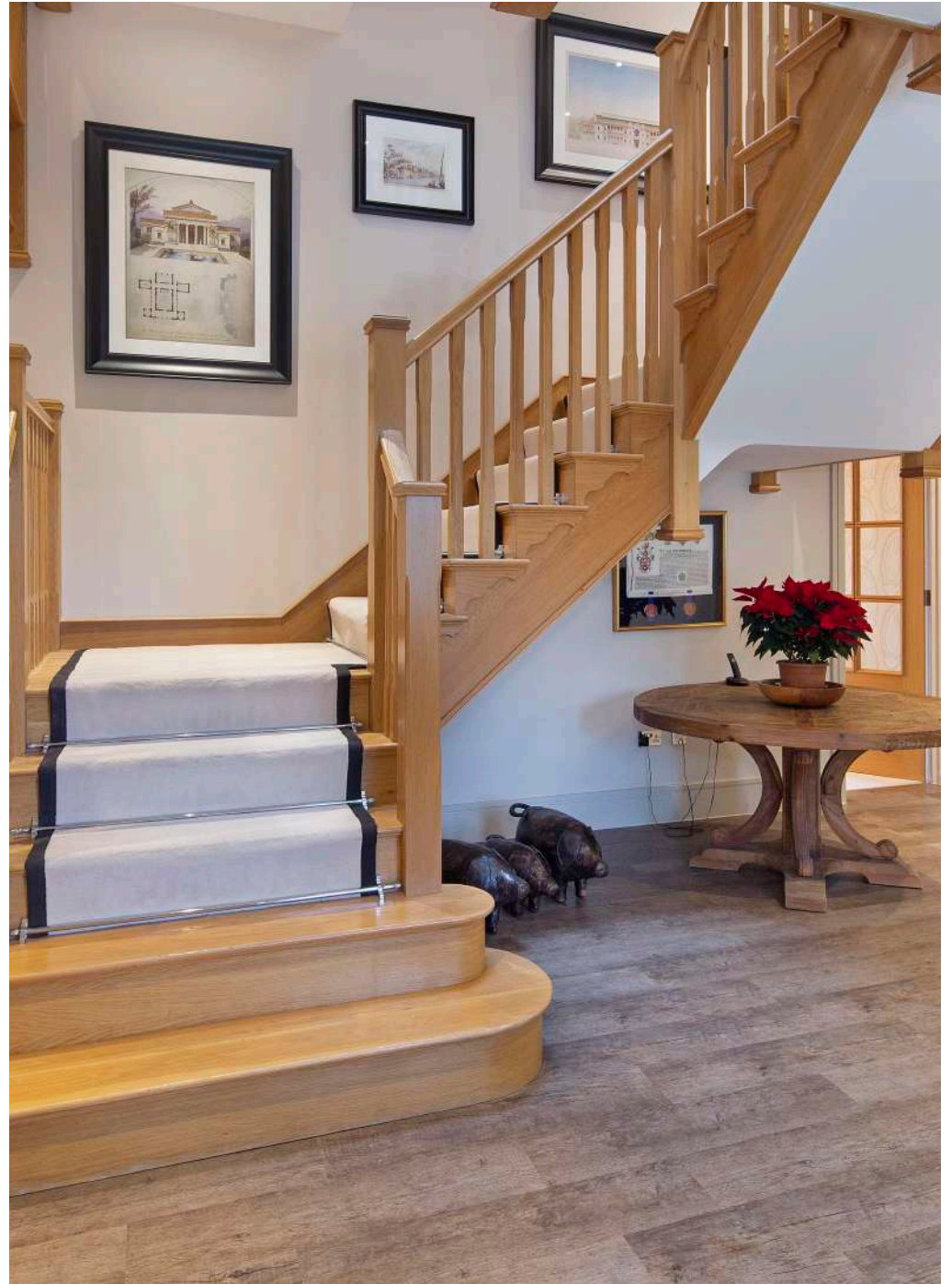
It was originally built by Millgate Homes and has spacious and elegant rooms over three floors comprising 4/5 reception rooms on the ground floor arranged around an impressive reception hall. Of particular note is the large kitchen/breakfast room overlooking and with doors opening onto the garden. On the first floor are four bedroom suites, with the main bedroom opening onto a balcony with views over the south facing garden. The top floor provides a superb games/media room and ensuite bedroom.

There is a triple garage with a flat above, and the swimming pool is discreetly positioned with a delightful pavilion with a kitchen, shower and WC.

The current owner has continued to improve the property by creating a new private drive and a new surface with electric wooden gates. The exterior of the house was painted, and new Bosch boilers were installed for the main house, both in 2023. All the bathrooms have been given a makeover with CP Hart fittings. In addition, there have been various other improvements, both internally and externally. The property benefits from Gigaclear 800mb broadband.













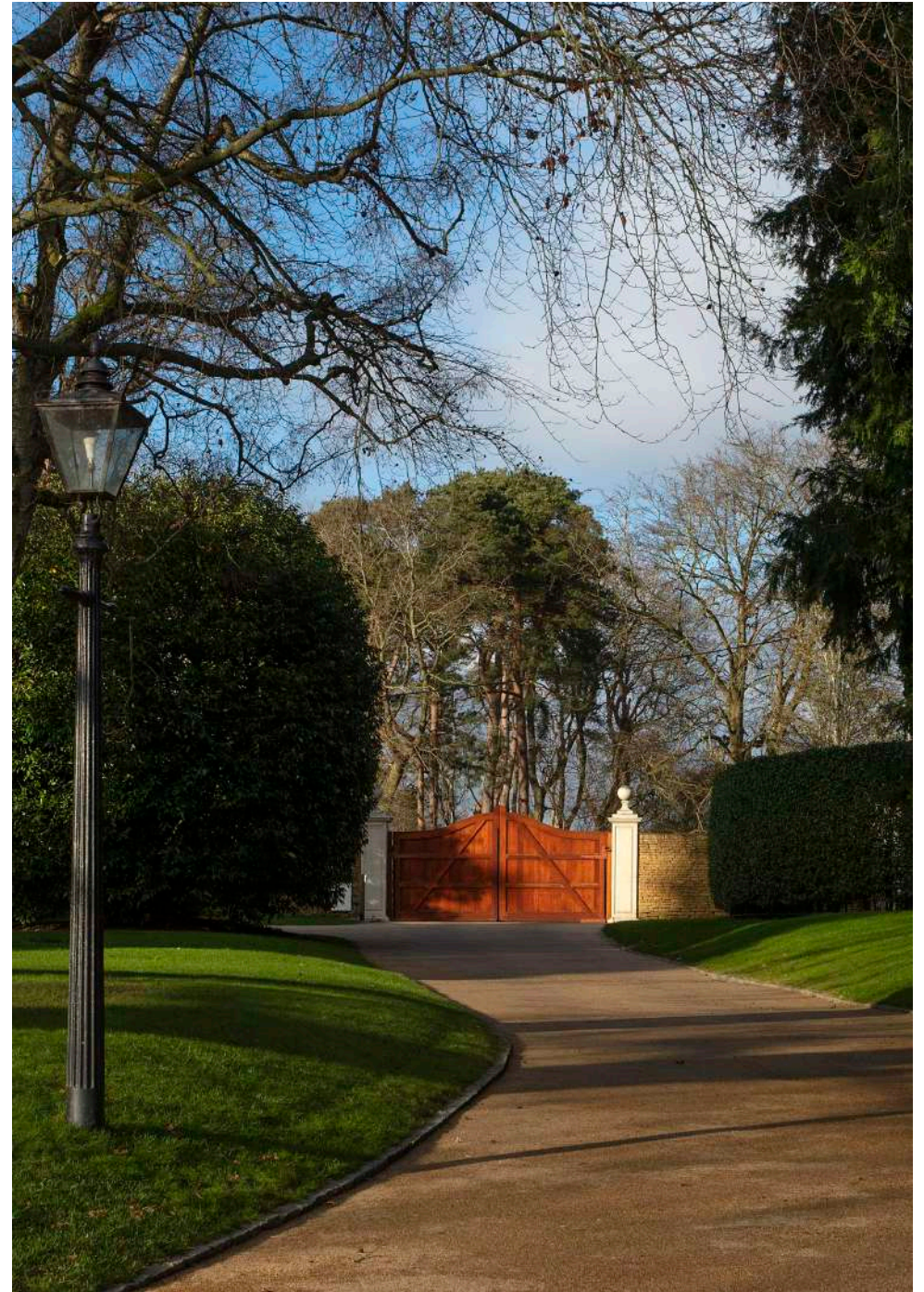


Location

Boars Hill is a sought-after residential area famous for its wooded rural setting, just five miles from the centre of Oxford, which provides a wide range of shopping, cultural, recreational and educational facilities. It is well served by communications with access to the A34 and Oxford ring road, connecting to the M4 and M40 motorways, with the regional centres of Newbury and Swindon also within easy reach.

Communications by rail are also excellent, with fast trains from Oxford or Didcot to London Paddington taking about fifty-two and forty minutes, respectively. In addition, Oxford Parkway station has services to London Marylebone in sixty-three minutes.

The house is very well situated for many schools in the area, including Abingdon, Radley, St. Helen and St. Katharine's, Cothill and Chandlings and further afield, there is Cokethorpe, St. Hugh's and Kingham Hill. Oxford has an exceptional range of schools, including The Dragon, St Edward's, Magdalen College, Summer Fields, Headington, Wychwood, d'Overbroecks, and Oxford High School.









This plan is for guidance only and must not be relied upon as a statement of fact. Attention is drawn to the Important Notice on the last page of the text of the particulars.

Approximate Gross Internal Area
 Ground Floor = 300.3 sq m / 3,232 sq ft
 First Floor = 254.8 sq m / 2,743 sq ft
 Second Floor = 147.6 sq m / 1,589 sq ft
 Garage - Ground Floor = 65.9 sq m / 709 sq ft
 Garage - First Floor = 56.5 sq m / 608 sq ft
 Pool House = 81.8 sq m / 880 sq ft
 Total = 906.9 sq m / 9,761 sq ft



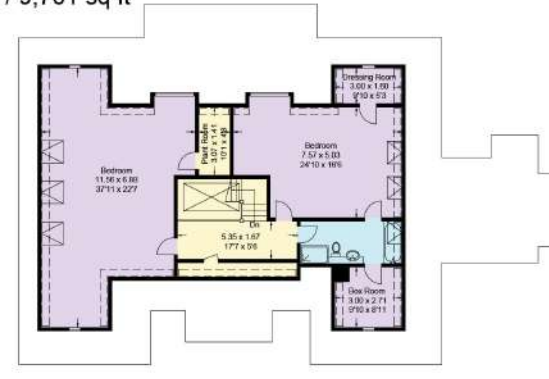
Garage - First Floor



(Not Shown In Actual Location / Orientation)
 Garage - Ground Floor



(Not Shown In Actual Location / Orientation)
 Pool House



Second Floor



Ground Floor



First Floor

Knight Frank
 Oxford Sales
 274 Banbury Road
 Oxford
 OX2 7DY
knightfrank.co.uk

I would be delighted to tell you more

William Kirkland
 01865 264865
william.kirkland@knightfrank.com

Rupert Sweeting
 020 7861 1078
rupert.sweeting@knightfrank.com



Fixtures and fittings: A list of the fitted carpets, curtains, light fittings and other items fixed to the property which are included in the sale (or may be available by separate negotiation) will be provided by the Seller's Solicitors.
 Important Notice: 1. Particulars: These particulars are not an offer or contract, nor part of one. You should not rely on statements by Knight Frank LLP in the particulars or by word of mouth or in writing ("information") as being factually accurate about the property, its condition or its value. Neither Knight Frank LLP nor any joint agent has any authority to make any representations about the property, and accordingly any information given is entirely without responsibility on the part of the agents, seller(s) or lessor(s). 2. Photos, Videos etc: The photographs, property videos and virtual viewings etc. show only certain parts of the property as they appeared at the time they were taken. Areas, measurements and distances given are approximate only. 3. Regulations etc: Any reference to alterations to, or use of, any part of the property does not mean that any necessary planning, building regulations or other consent has been obtained. A buyer or lessee must find out by inspection or in other ways that these matters have been properly dealt with and that all information is correct. 4. VAT: The VAT position relating to the property may change without notice. 5. To find out how we process Personal Data, please refer to our Group Privacy Statement and other notices at <https://www.knightfrank.com/legals/privacy-statement>.
 Particulars dated February 2024. Photographs and videos dated February 2024.
 Knight Frank is the trading name of Knight Frank LLP. Knight Frank LLP is a limited liability partnership registered in England and Wales with registered number OC305934. Our registered office is at 55 Baker Street, London W1U 8AN where you may look at a list of members' names. If we use the term 'partner' when referring to one of our representatives, that person will either be a member, employee, worker or consultant of Knight Frank LLP and not a partner in a partnership. If you do not want us to contact you further about our services then please contact us by either calling 020 3544 0692, email to marketing.help@knightfrank.com or post to our UK Residential Marketing Manager at our registered office (above) providing your name and address.

