

Manor Cottage, Stoke Mandeville



Attractive period home in
extensive gardens alongside a
self-contained annexe.

Summary of accommodation

Three reception rooms | Kitchen and breakfast room | Utility room
Ground floor cloakroom

Five bedrooms | Two bathrooms

Self-contained one bedroom annexe | Workshop

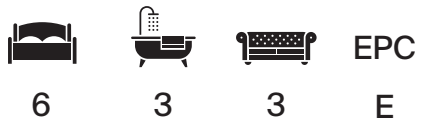
Set in approximately 0.37 acres

Distances

Central London 46.7 miles | Oxford 24 miles | Henley-on-Thames 27 miles

Wendover 3.7 miles | Princes Risborough 5.8 miles

(All distances and times are approximate).





Manor Cottage

Grade II listed five-bedroom house dating back to the early part of the 18th century benefitting from a large extension to the original cottage.

The accommodation in the main house is set over three floors. The ground floor features a large sitting room with views out to the garden and a cosier traditional sitting room with a wood-burning stove. There is also a formal dining room, spacious kitchen and breakfast room, utility and cloakroom. There are five bedrooms alongside two bathrooms on the first and second floors, including an en suite to the principal bedroom.

The detached annexe is superbly well appointed and includes a kitchen, wet room, and an open plan living room and bedroom.

The house is set centrally in a good plot of about 0.37 acres behind a laurel hedge. There is a large driveway and grass lawn to the front. To the side of the house is a courtyard garden for the annexe. The rear garden is mostly laid to lawn with mature trees and hedges surrounding, and features a sheltered sitting area, patio and an excellent workshop.

Situation

Manor Cottage is well located within Stoke Mandeville, a large village in south Buckinghamshire offering a great selection of local facilities and excellent transport links into London.

The property is ideally situated for fast trains into London Marylebone, and within a short drive, one can pick up the London Euston line at Tring.

The property lies at the edge of the Chilterns, surrounded by wonderful countryside offering excellent walks. Sporting facilities in the area are varied and include golf at Ellesborough, Princes Risborough and Beaconsfield.

Buckinghamshire provides many good schools, including Wycombe Abbey for girls, Eton, and Berkhamstead for boys. Nearby preparatory schools include Griffin House School in Princes Risborough, Ashfold School in Dorton, The Beacon for boys and Heatherton House for girls in Amersham, and Godstowe preparatory school for girls in High Wycombe. Buckinghamshire also still retains the grammar school system, and popular schools like Aylesbury Grammar and Sir Henry Floyd Grammar are both within reach. There are also many popular local primary schools.

Property information

Services: All mains services are connected.

Local authority: Aylesbury Vale District Council

Viewings

Strictly by appointment through Knight Frank 01865 790077.









Approximate Gross Internal Floor Area

Ground Floor = 118.8 sq m / 1,279 sq ft

First Floor = 76.4 sq m / 822 sq ft

Second Floor = 29.3 sq m / 315 sq ft

The Barn = 28.5 sq m / 307 sq ft

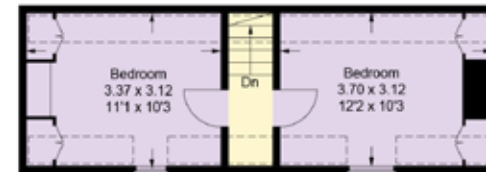
Annexe = 24.2 sq m / 260 sq ft

Total Area = 277.2 sq m / 2,983 sq ft

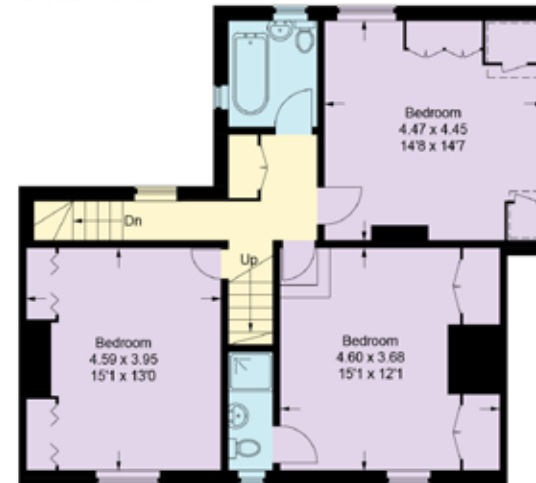
This plan is for guidance only and must not be relied upon as a statement of fact. Attention is drawn to the important notice on the last page of the text of the Particulars.



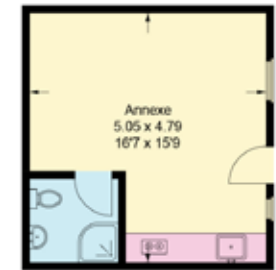
Ground Floor



Second Floor



First Floor



(Not Shown In Actual Location / Orientation)



(Not Shown In Actual Location / Orientation)

The Barn

Knight Frank Oxford
274 Banbury Road
Summertown
Oxford
OX2 7DY
knightfrank.co.uk

I would be delighted to tell you more

Samuel Lamb

01865 264856

samuel.lamb@knightfrank.com



Fixtures and fittings: A list of the fitted carpets, curtains, light fittings and other items fixed to the property which are included in the sale (or may be available by separate negotiation) will be provided by the Seller's Solicitors. All those items regarded as tenant's fixtures and fittings, are specifically excluded from any tenancy and will not be evidenced in the inventory. Important Notice: 1. Particulars: These particulars are not an offer or contract, nor part of one. You should not rely on statements by Knight Frank LLP in the particulars or by word of mouth or in writing ("information") as being factually accurate about the property, its condition or its value. Neither Knight Frank LLP nor any joint agent has any authority to make any representations about the property, and accordingly any information given is entirely without responsibility on the part of the agents, seller(s) or lessor(s). 2. Photos, Videos etc: The photographs, property videos and virtual viewings etc. show only certain parts of the property as they appeared at the time they were taken. Areas, measurements and distances given are approximate only. 3. Regulations etc: Any reference to alterations to, or use of, any part of the property does not mean that any necessary planning, building regulations or other consent has been obtained. A buyer or lessee must find out by inspection or in other ways that these matters have been properly dealt with and that all information is correct. 4. VAT: The VAT position relating to the property may change without notice. 5. To find out how we process Personal Data, please refer to our Group Privacy Statement and other notices at <https://www.knightfrank.com/legals/privacy-statement>. Particulars dated February 2022. Photographs and videos dated February 2022.

Knight Frank is the trading name of Knight Frank LLP. Knight Frank LLP is a limited liability partnership registered in England and Wales with registered number OC305934. Our registered office is at 55 Baker Street, London W1U 8AN where you may look at a list of members' names. If we use the term 'partner' when referring to one of our representatives, that person will either be a member, employee, worker or consultant of Knight Frank LLP and not a partner in a partnership. If you do not want us to contact you further about our services then please contact us by either calling 020 3544 0692, email to marketing.help@knightfrank.com or post to our UK Residential Marketing Manager at our registered office (above) providing your name and address.