

30 Charlbury Road

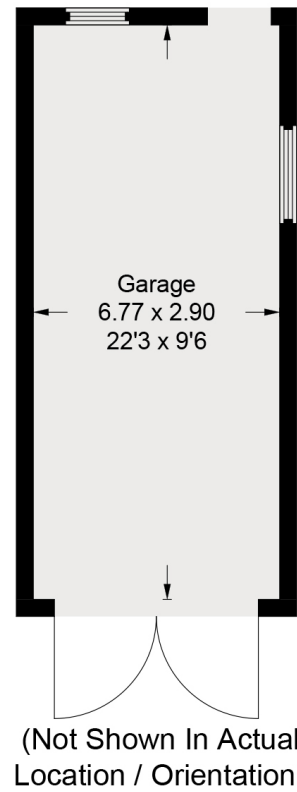
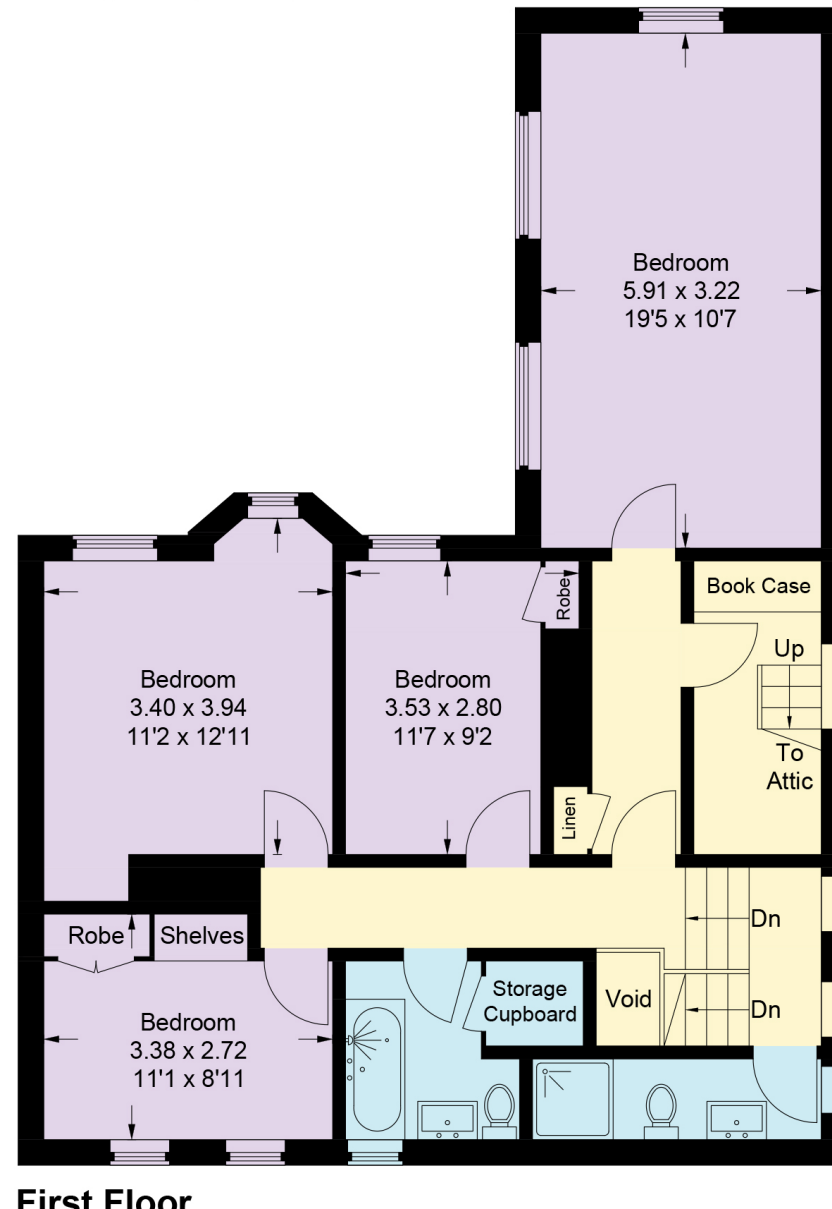
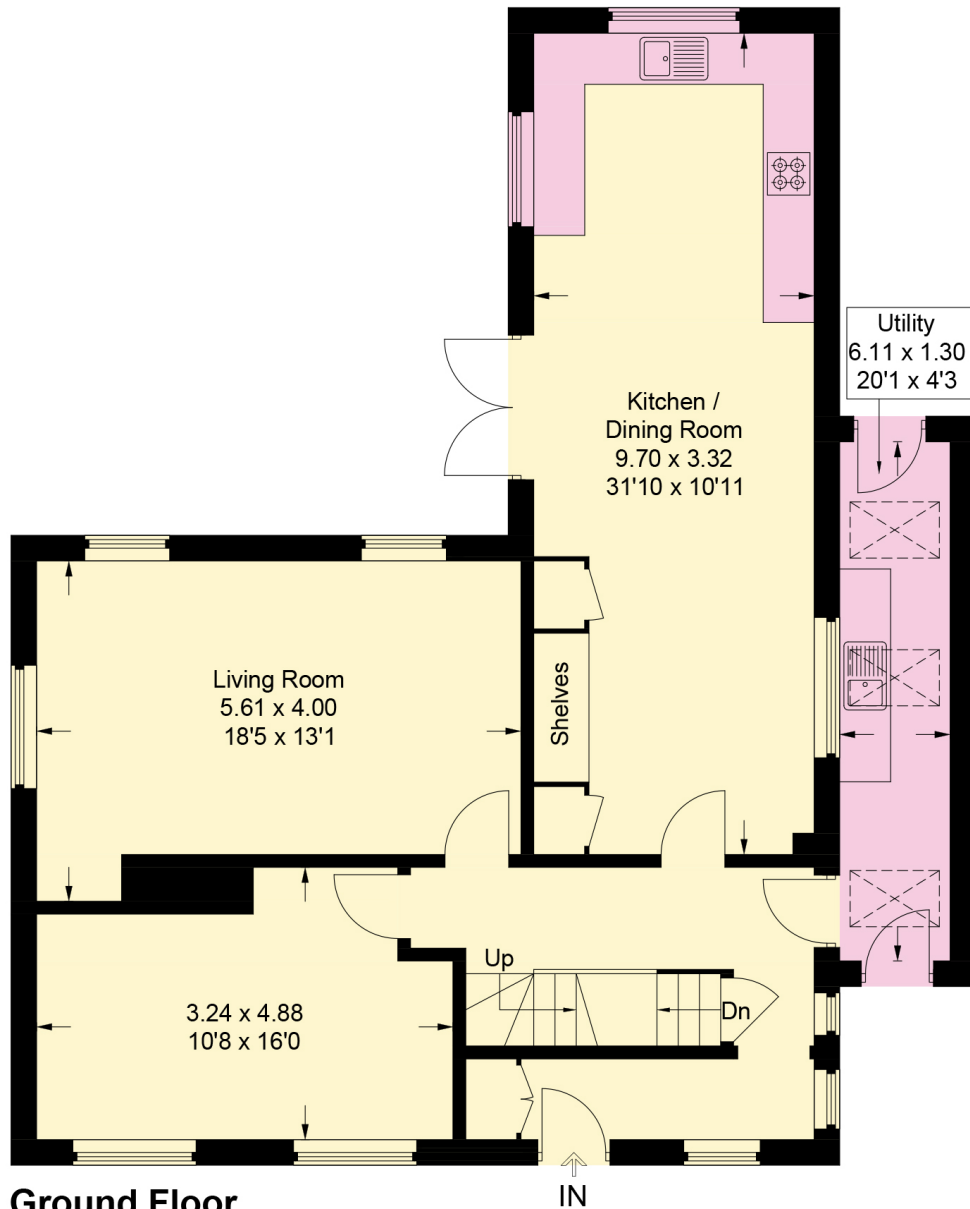
Approximate Gross Internal Area

Ground Floor = 93.1 sq m / 1,002 sq ft

First Floor = 83.3 sq m / 897 sq ft

Garage = 19.6 sq m / 211 sq ft

Total = 196.0 sq m / 2,110 sq ft



This plan is for layout guidance only. Not drawn to scale unless stated. Windows and door openings are approximate. Whilst every care is taken in the preparation of this plan, please check all dimensions, shapes and compass bearings before making any decisions reliant upon them.