



Brondesbury Villas,  
Queens Park  
NW6





## A 2 bed flat for sale in Queen's Park, NW6.

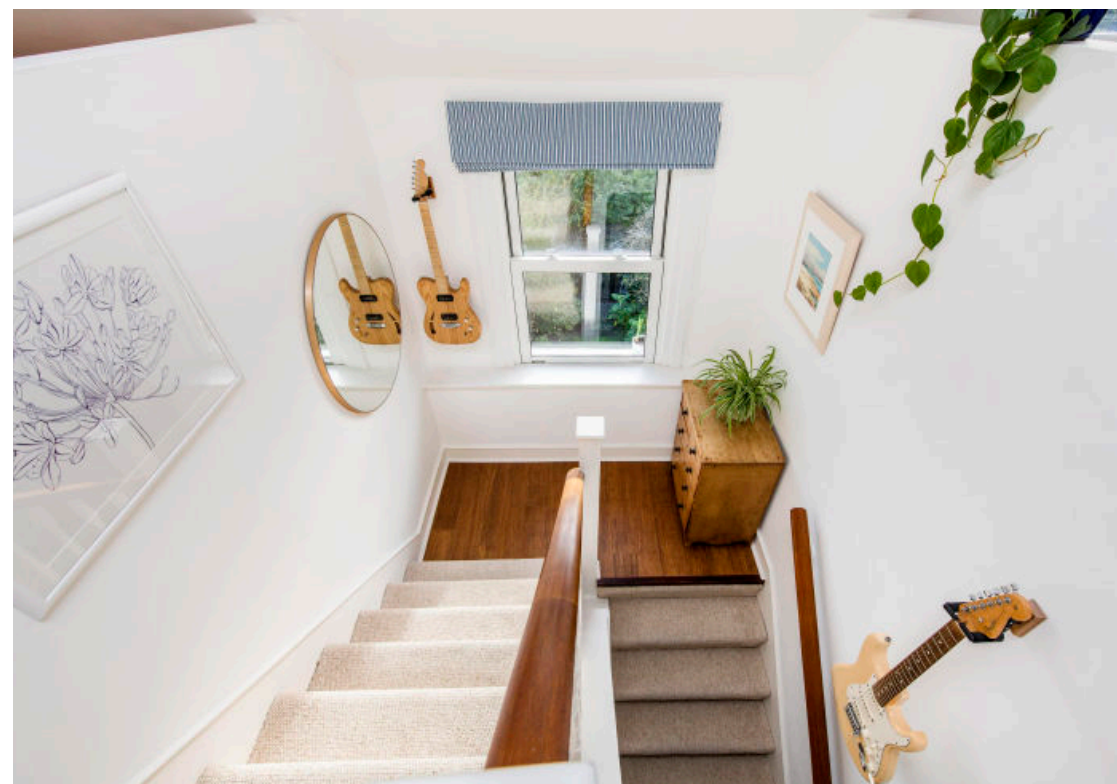
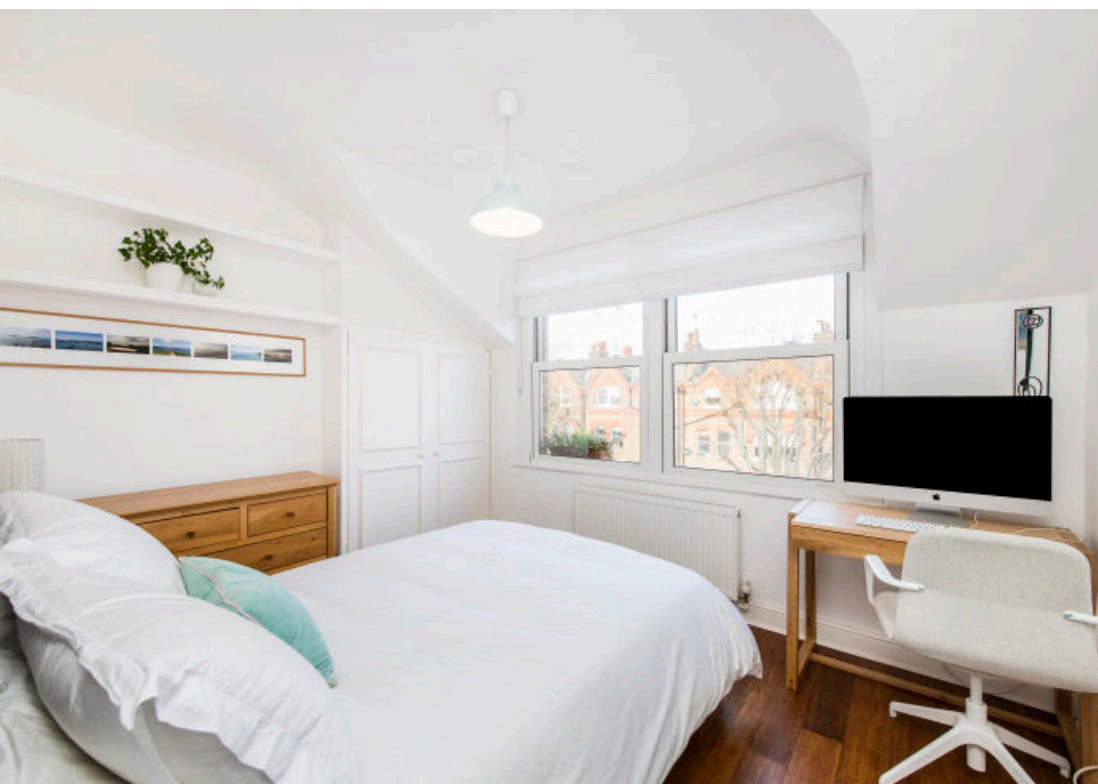


This bright and airy flat is arranged over the top floor of a handsome period building on Brondesbury Villas. Upon entering on the first floor, a wide staircase leads up to a south west facing open plan kitchen reception with space for dining.

The property is flooded with an abundance of natural light.

There are two generous double bedrooms, both of which are served by a smart and modern bathroom. There is maximum use of space throughout.

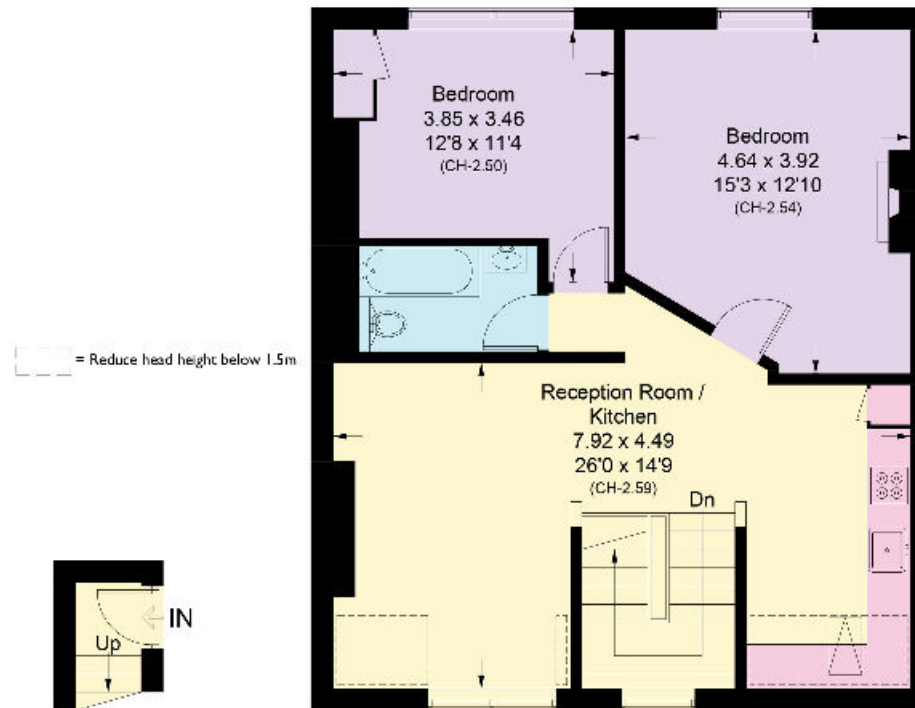
Further benefits include a share of freehold.





## Brondesbury Villas, NW6

Approximate Area = 72.7 sq m / 782 sq ft  
Including Limited Use Area (3.7 sq m / 40 sq ft)



### First Floor

Approximate Area  
1.6 sq m / 17 sq ft

### Second Floor

Approximate Area = 71.1 sq m / 765 sq ft  
Including Limited Use Area (3.7 sq m / 40 sq ft)

Surveyed and drawn in accordance with the International property measurements standards (IPMS 2: Residential) Not drawn to scale unless stated.  
Whilst every care is taken in the preparation of this plan, please check all dimensions, shapes and compass bearings before making any decisions reliant upon them.

Knight Frank  
Queen's Park  
60c Salusbury Road  
Queen's Park London NW6 6NP

**We would be delighted to tell you more.**

**Queens Park**  
020 3815 3020  
queenspark@knightfrank.com

**knightfrank.co.uk**



**Connecting people & property, perfectly.**

Fixtures and fittings: A list of the fitted carpets, curtains, light fittings and other items fixed to the property which are included in the sale (or may be available by separate negotiation) will be provided by the Seller's Solicitors.

Important Notice: 1. Particulars: These particulars are not an offer or contract, nor part of one. You should not rely on statements by Knight Frank LLP in the particulars or by word of mouth or in writing ("information") as being factually accurate about the property, its condition or its value. Neither Knight Frank LLP nor any joint agent has any authority to make any representations about the property, and accordingly any information given is entirely without responsibility on the part of the agents, seller(s) or lessor(s). 2. Photos, Videos etc: The photographs, property videos and virtual viewings etc. show only certain parts of the property as they appeared at the time they were taken. Areas, measurements and distances given are approximate only. 3. Regulations etc: Any reference to alterations to, or use of, any part of the property does not mean that any necessary planning, building regulations or other consent has been obtained. A buyer or lessee must find out by inspection or in other ways that these matters have been properly dealt with and that all information is correct. 4. VAT: The VAT position relating to the property may change without notice. 5. To find out how we process Personal Data, please refer to our Group Privacy Statement and other notices at <https://www.knightfrank.com/legals/privacy-statement>.

Particulars dated January 2021. Photographs and videos dated January 2021.

Knight Frank is the trading name of Knight Frank LLP. Knight Frank LLP is a limited liability partnership registered in England and Wales with registered number OC305934. Our registered office is at 55 Baker Street, London W1U 8AN where you may look at a list of members' names. If we use the term 'partner' when referring to one of our representatives, that person will either be a member, employee, worker or consultant of Knight Frank LLP and not a partner in a partnership. If you do not want us to contact you further about our services then please contact us by either calling 020 3544 0692, email to [marketing.help@knightfrank.com](mailto:marketing.help@knightfrank.com) or post to our UK Residential Marketing Manager at our registered office (above) providing your name and address.