



SUSSEX MEWS WEST

London, W2



SUSSEX MEWS WEST, HYDE PARK W2

Stunning 4 bedroom mews home with private roof terrace for sale in a highly sought after mews in W2.



4



3



1



EPC

C

Local Authority: City of Westminster

Council Tax band: G

Tenure: Freehold

Guide Price: £3,250,000



Situated in a quiet, picturesque cobbled mews, this immaculately presented, thoughtfully designed property offers flexible accommodation across four floors and was re-built to an exacting standard.

Internally the house offers approximately 205.2 sq. m. (2209 sq. ft.) and is filled with natural light thanks to the South facing front aspect with big windows and cleverly designed skylights and light wells.







The ground floor comprises a spacious open-plan kitchen/dining room with island hob and breakfast bar along with a separate reception room and guest cloakroom.

The lower ground floor is highly flexible with two generous rooms, currently used as a home gym/tv room and a home office. Further there is a utility room and shower room completing this level.

Three bedrooms can be found on the first floor with the larger bedroom featuring a walk in dressing area and en suite shower room and finally there is a further family bathroom. Positioned on the second floor is the principal bedroom that affords built-in wardrobes and four-piece en suite. This room leads out onto the generous roof terrace which is not overlooked and boasts a green living wall.



One of W2's most desirable mews locations, Sussex Mews West is situated just moments from Hyde Park and Kensington Gardens which collectively offer 625 acres of green space and amenities including open water swimming, boating, cycling, tennis and horse riding, as well as being home to Kensington Palace, the Italian Gardens, numerous cafes and the Serpentine Lake. The nearby transport facilities include Lancaster Gate (Central line) and Paddington (Elizabeth/Circle/District/Bakerloo lines/Heathrow Express/National Rail) stations.




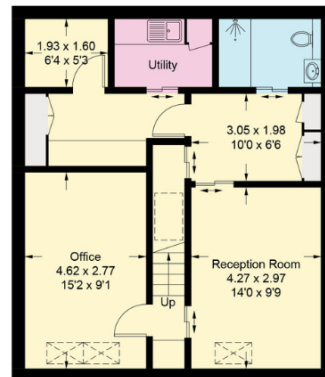




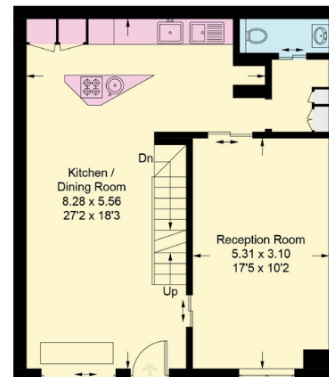
Sussex Mews West, W2



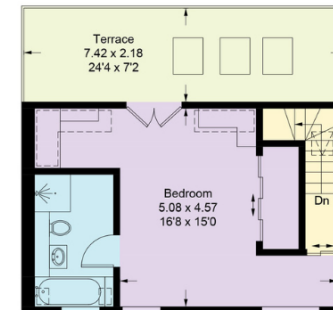
 = Reduced headroom below 1.5m / 5'0"



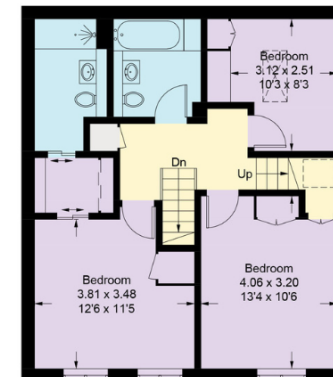
Basement



Ground Floor



Second Floor



First Floor

Approximate Gross Internal Area = 205.2 sq m / 2,209 sq ft

This plan is for layout guidance only. Not drawn to scale unless stated. Windows and door openings are approximate. Whilst every care is taken in the preparation of this plan, please check all dimensions, shapes and compass bearings before making any decisions reliant upon them. (ID767266)

We would be delighted
to tell you more.

Mark Ruffell
mark.ruffell@knightfrank.com
+44 20 3697 8234

Hyde Park
1 Craven Terrace
W2 3QD

[knightfrank.co.uk](https://www.knightfrank.co.uk)

Your partners in property

1. Particulars: These particulars are not an offer or contract, nor part of one. You should not rely on statements given by KF Scotland Ltd., in the particulars, by word of mouth or in writing ("information") as being factually accurate about the property, its condition or its value. Neither KF Scotland Ltd, nor any joint agent has any authority to make any representations about the property, and accordingly any information given is entirely without responsibility on the part of KF Scotland Ltd. 2. Material Information: Please note that the material information is provided to KF Scotland Ltd, by third parties and is provided here as a guide only. While KF Scotland Ltd, has taken steps to verify this information, we advise you to confirm the details of any such material information prior to any offer being submitted. If we are informed of changes to this information by the seller or another third party, we will use reasonable endeavours to update this as soon as practical. 3. Photos, Videos etc: The photographs, property videos and virtual viewings etc. show only certain parts of the property as they appeared at the time they were taken. Areas, measurements and distances given are approximate only. 4. Regulations etc: Any reference to alterations to, or use of, any part of the property does not mean that any necessary planning, building regulations or other consent has been obtained. A buyer must find out by inspection or in other ways that these matters have been properly dealt with and that all information is correct. 5. Fixtures and fittings: A list of the fitted carpets, curtains, light fittings and other items fixed to the property which are included in the sale (or may be available by separate negotiation) will be provided by the Seller's Solicitors. 6. VAT: The VAT position relating to the property may change without notice. 7. To find out how we process Personal Data, please refer to our Group Privacy Statement and other notices at <https://www.knightfrank.com/legals/privacy-statement>.

Particulars dated May 2024. Photographs and videos dated May 2024. All information is correct at the time of going to print. KF Scotland Ltd is a limited company registered in Scotland with registered number 120/NE78008. Our registered office is 41 Charlotte Square, Edinburgh, EH2 4HQ. KF Scotland Limited is an independently owned member of the Knight Frank Network operating under licence from Knight Frank LLP.