



Highwood Close,
East Dulwich
SE22





Spread across three floors, this wonderful contemporary family home offers plenty of space and accommodation.

To the front of the property is an integrated garage and to the rear is a spacious sleek kitchen with integrated appliances, sociable island space as well as a utility area. This opens up onto the conservatory/dining area where French doors provide access to the pretty South west facing rear garden with well stocked mature borders.

The first and second floors provide access to a lovely living space spanning the width of the property as well as four bright and spacious bedrooms, two of which include ensuite bathrooms. All floors benefit from a contemporary family bathroom and ground floor cloakroom.





Location

Highwood Close is a delightful development just off the southerly end of Lordship Lane built by Lang Homes in 2005.

The property is well connected with bus routes to Victoria and Tottenham Court Road via East Dulwich and Peckham both just 15 minutes away. Within walking distance is the Horniman Museum and Gardens, Dulwich Park and Cox's Walk leading to Dulwich and Sydenham woods. Forest Hill station is 0.6 miles away offering fantastic links into London Bridge, London Victoria, Canada Water, Shoreditch, Whitechapel, Highbury & Islington and many other locations.

A wealth of excellent state primary and secondary schools as well as private schools are nearby, including Horniman Primary School, Fairlawn Primary School, Eliot Bank Primary School, JAGS, Alleyns and Dulwich College.

All distances are approximate.

Tenure

Freehold

EPC

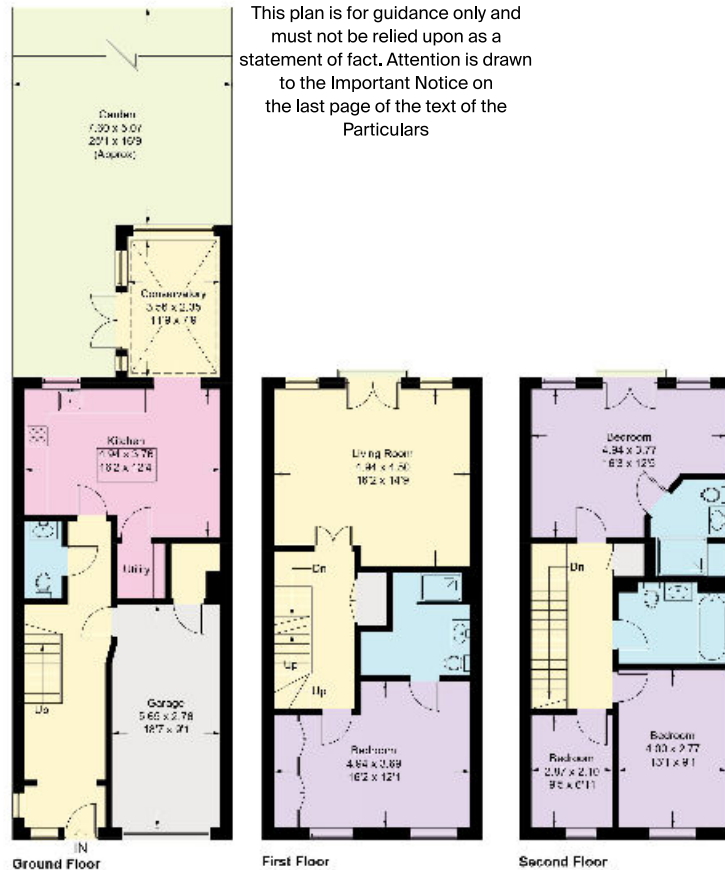
C

Guide price

The guide price is available on request

Approximate Gross Internal Area
Ground Floor = 64.3 sq m / 692 sq ft
First Floor = 55.1 sq m / 593 sq ft
Second Floor = 55.1 sq m / 593 sq ft
Total = 174.5 sq m / 1878 sq ft (Including Garage)

This plan is for guidance only and must not be relied upon as a statement of fact. Attention is drawn to the Important Notice on the last page of the text of the Particulars



Knight Frank
Dulwich
1C Calton Avenue
Dulwich Village,
London SE21 7DE
knightfrank.co.uk

We would be delighted to tell you more.

Diarmuid Linehan

diarmuid.linehan@knightfrank.com

Fixtures and fittings: A list of the fitted carpets, curtains, light fittings and other items fixed to the property which are included in the sale (or may be available by separate negotiation) will be provided by the Seller's Solicitors.

Important Notice: 1. Particulars: These particulars are not an offer or contract, nor part of one. You should not rely on statements by Knight Frank LLP in the particulars or by word of mouth or in writing ("information") as being factually accurate about the property, its condition or its value. Neither Knight Frank LLP nor any joint agent has any authority to make any representations about the property; and accordingly any information given is entirely without responsibility on the part of the agents, seller(s) or lessor(s). 2. Photos, Videos etc: The photographs, property videos and virtual viewings etc. show only certain parts of the property as they appeared at the time they were taken. Areas, measurements and distances given are approximate only. 3. Regulations etc: Any reference to alterations to, or use of, any part of the property does not mean that any necessary planning, building regulations or other consent has been obtained. A buyer or lessee must find out by inspection or in other ways that these matters have been properly dealt with and that all information is correct. 4. VAT: The VAT position relating to the property may change without notice. 5. To find out how we process Personal Data, please refer to our Group Privacy Statement and other notices at <https://www.knightfrank.com/legal/privacy-statement>.

Particulars dated August 2021. Photographs and videos dated August 2021.

Knight Frank is the trading name of Knight Frank LLP. Knight Frank LLP is a limited liability partnership registered in England and Wales with registered number OC305934. Our registered office is at 55 Baker Street, London W1U 8AN where you may look at a list of members' names. If we use the term 'partner' when referring to one of our representatives, that person will either be a member, employee, worker or consultant of Knight Frank LLP and not a partner in a partnership. If you do not want us to contact you further about our services then please contact us by either calling 020 3544 0692, email to marketing.help@knightfrank.com or post to our UK Residential Marketing Manager at our registered office (above) providing your name and address.



Connecting people & property, perfectly.