



WALDEMAR ROAD

Wimbledon, SW19



WALDEMAR ROAD

A beautiful, loft extended, five-bedroom family home which is full of character, set within a popular residential area of Wimbledon, near to transport links.



5



2



2

EPC

D

Local Authority: London Borough of Merton

Council Tax band: G

Tenure: Freehold

Guide Price: £1,500,000



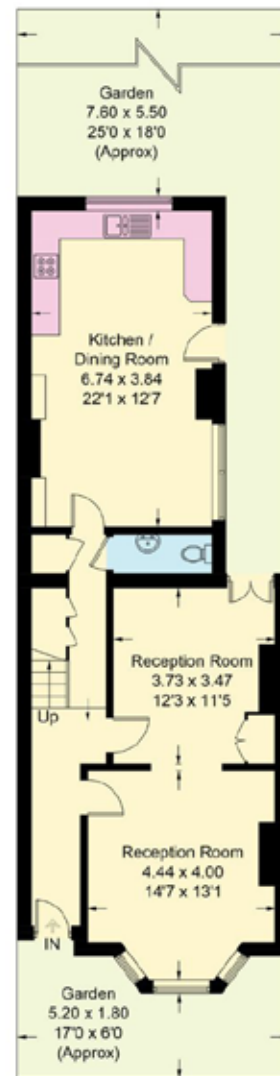
ABOUT THE PROPERTY

A well-proportioned five-bedroom end of terrace family home featuring a bright open plan kitchen/diner leading onto a private landscaped rear garden. The generous double reception room to the front of the house retains original period character with two feature fireplaces, while a converted loft provides extra bedroom space. This elegant home boasts four bedrooms on the first floor with a full width principal bedroom. The home benefits from two modern bathrooms, a ground floor WC, fitted storage throughout and side access.

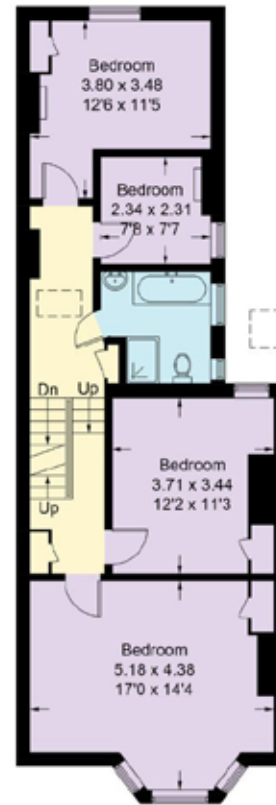
Waldemar Road is located within a popular residential area, close to both Wimbledon Park tube station and the easy of Wimbledon town centre and train station, set close to a wealth of local amenities with excellent local schools and green open spaces nearby.





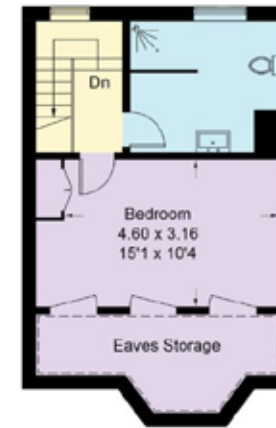


Ground Floor



First Floor

Reduced headroom below 1.5m / 5'0



Second Floor

Approximate Gross Internal Area = 176.2 sq m / 1897 sq ft
 Eaves Storage = 8.4 sq m / 90 sq ft
 Total = 184.6 sq m / 1987 sq ft

This plan is for layout guidance only. Not drawn to scale unless stated. Windows and door openings are approximate. Whilst every care is taken in the preparation of this plan, please check all dimensions, shapes and compass bearings before making any decisions reliant upon them. (ID767266)

Ross Jordan

+44 20 3830 8634

ross.jordan@knightfrank.com

Knight Frank Wimbledon

58 High Street, London

SW19 5EE

knightfrank.co.uk

Your partners in property

1. Particulars: These particulars are not an offer or contract, nor part of one. You should not rely on statements given by Knight Frank in the particulars, by word of mouth or in writing ("information") as being factually accurate about the property, its condition or its value. Neither Knight Frank nor any joint agent has any authority to make any representations about the property, and accordingly any information given is entirely without responsibility on the part of Knight Frank. 2. Material Information: Please note that the material information is provided to Knight Frank by third parties and is provided here as a guide only. While Knight Frank has taken steps to verify this information, we advise you to confirm the details of any such material information prior to any offer being submitted. If we are informed of changes to this information by the seller or another third party, we will use reasonable endeavours to update this as soon as practical. 3. Photos, Videos etc: The photographs, property videos and virtual viewings etc. show only certain parts of the property as they appeared at the time they were taken. Areas, measurements and distances given are approximate only. 4. Regulations etc: Any reference to alterations to, or use of, any part of the property does not mean that any necessary planning, building regulations or other consent has been obtained. A buyer must find out by inspection or in other ways that these matters have been properly dealt with and that all information is correct. 5. Fixtures and fittings: A list of the fitted carpets, curtains, light fittings and other items fixed to the property which are included in the sale (or may be available by separate negotiation) will be provided by the Seller's Solicitors. 6. VAT: The VAT position relating to the property may change without notice. 7. To find out how we process Personal Data, please refer to our Group Privacy Statement and other notices at <https://www.knightfrank.com/legals/privacy-statement>.

Particulars dated June 2025. Photographs and videos dated June 2025. All information is correct at the time of going to print. Knight Frank is the trading name of Knight Frank LLP. Knight Frank LLP is a limited liability partnership registered in England and Wales with registered number OC305934. Our registered office is at 55 Baker Street, London W1U 8AN. We use the term 'partner' to refer to a member of Knight Frank LLP, or an employee or consultant. A list of members names of Knight Frank LLP may be inspected at our registered office. If you do not want us to contact you further about our services then please contact us by either calling 020 3544 0692, email to marketing.help@knightfrank.com or post to our UK Residential Marketing Manager at our registered office (above) providing your name and address.

