

**LYFORD ROAD  
LONDON SW18**

APPROXIMATE INTERNAL FLOOR AREA

**3637 SQ.FT / 337.9 SQ.M.**

PLUS GARDEN STORAGE 40 SQ.FT. / 3.7 SQ.M.

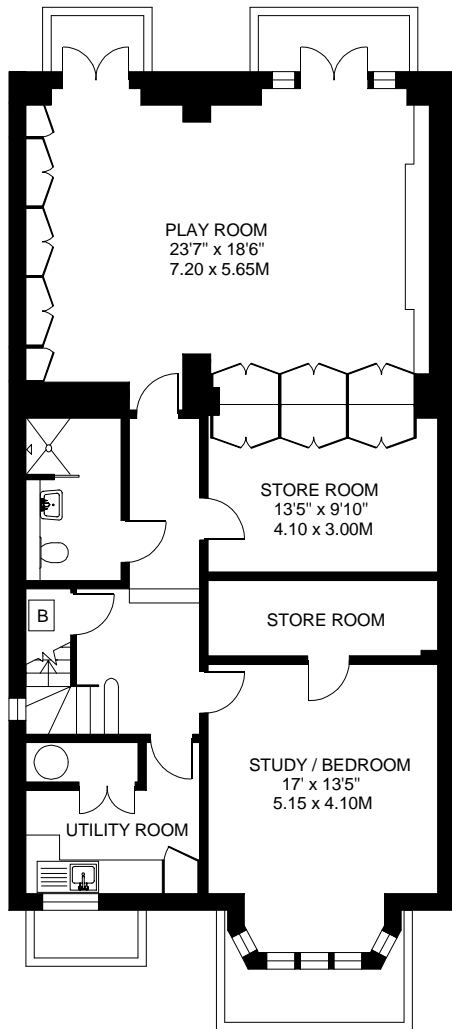
PLUS LOFT STORAGE 208 SQ.FT. / 19.3 SQ.M.

**TOTAL AREA SHOWN ON PLAN**

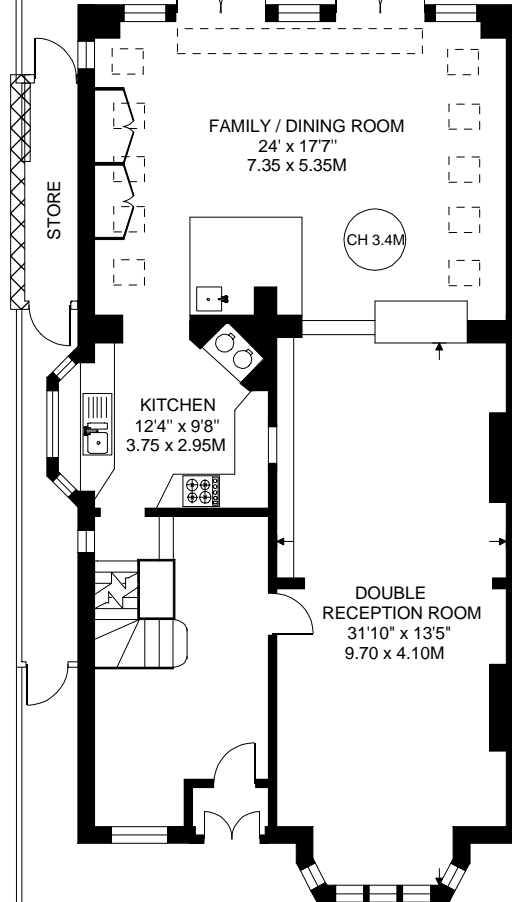
**3885 SQ.FT / 360.9 SQ.M.**



GARDEN  
70' x 29'  
21.35 x 8.85M

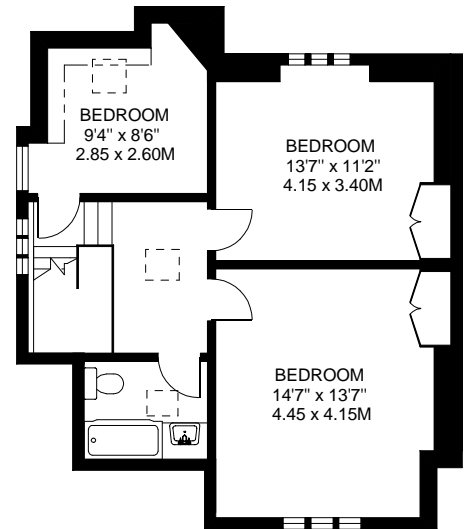


LOWER GROUND FLOOR 1152 SQ.FT.

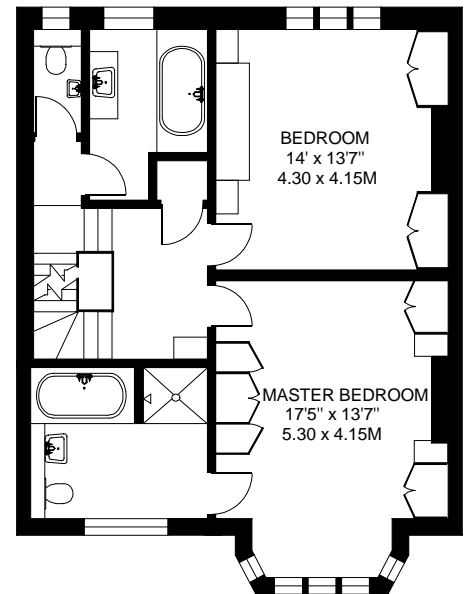


GROUND FLOOR 1180 SQ.FT.

FRONT GARDEN



SECOND FLOOR 580 SQ.FT.



FIRST FLOOR 725 SQ.FT.