

# Milman Road, Queen's Park NW6

---



# Milman Road, Queen's Park NW6

Sitting in a commanding position on Milman Road with views over the much loved Queen's Park, this four bedroom terrace property has been completely renovated and extended to the highest standard.

To the front of the house is an elegant reception room with high ceilings and bay windows, followed by a guest cloakroom. The rear of the property has been fully extended and unfolds into a light-filled kitchen/dining room complete with a full range of integrated appliances, an intelligent utility area, and bi-folding doors that open to the southwest facing rear garden.



**Guide price:** £3,200,000

**Tenure:** Freehold

**Local authority:** London Borough of Brent

**Council tax band:** G





A home gym, sauna, and shower are located at the rear of the garden. Parquet herringbone flooring runs through the entire ground floor.

The first floor houses three bedrooms, with the principal suite at the front of the property. The principal suite benefits from fitted wardrobes, and an en suite bathroom, whilst the additional bedrooms on this floor also has access to a jack and jill. On the second floor, the loft space has been converted to create a further double bedroom with en suite facilities and unmatched views overlooking Queen's Park itself.





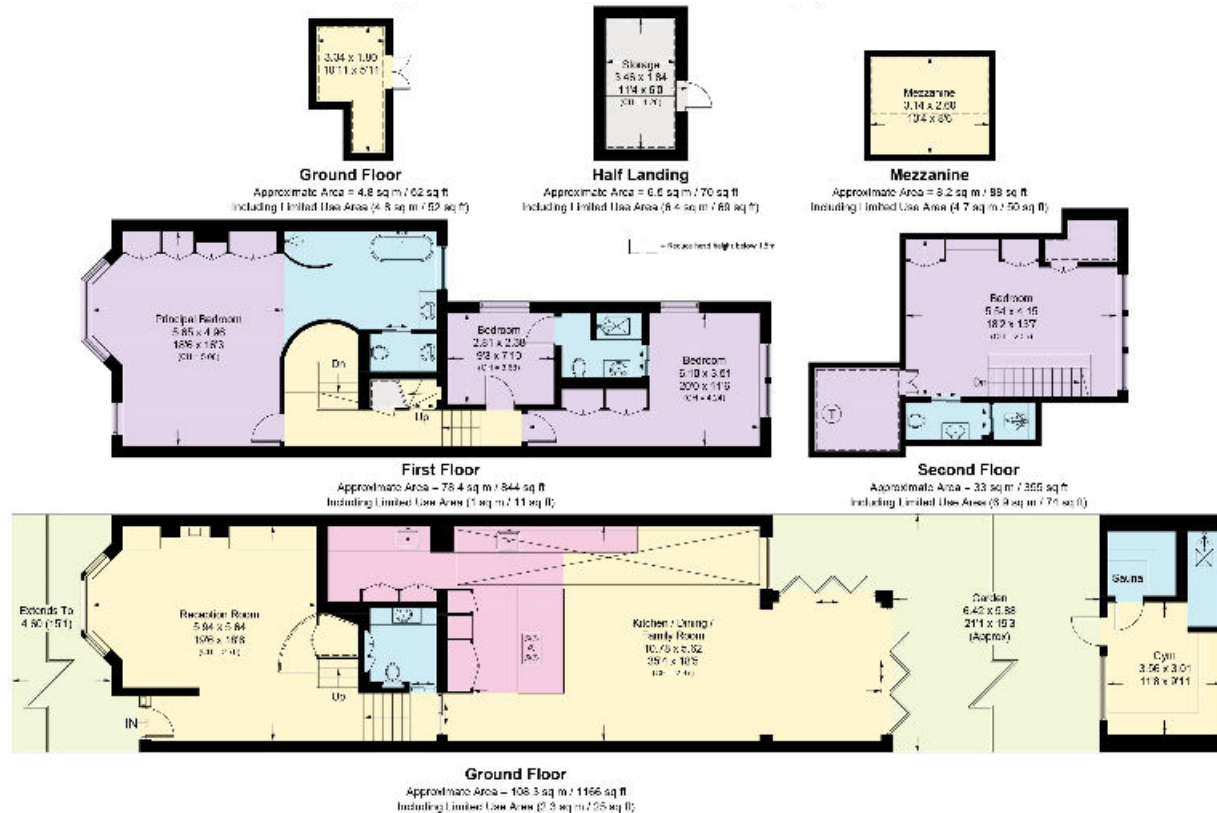
# Milman Road, NW6

Approximate Area = 231 sq m / 2487 sq ft

Mezzanine = 8.2 sq m / 88 sq ft

Gym = 16 sq m / 172 sq ft

Total = 255.2 sq m / 2747 sq ft



This plan is for guidance only and must not be relied upon as a statement of fact. Attention is drawn to the important notice on the last page of the text of the Particulars.

**Knight Frank**  
Queen's Park  
60 Salusbury Road  
NW6 6NP

We would be delighted to tell you more

Queen's Park  
020 3815 3020  
queenspark@knightfrank.com

[knightfrank.co.uk](https://www.knightfrank.co.uk)



Fixtures and fittings: A list of the fitted carpets, curtains, light fittings and other items fixed to the property which are included in the sale (or may be available by separate negotiation) will be provided by the Seller's Solicitors.

Important Notice: 1. Particulars: These particulars are not an offer or contract, nor part of one. You should not rely on statements by Knight Frank LLP in the particulars or by word of mouth or in writing ("information") as being factually accurate about the property, its condition or its value. Neither Knight Frank LLP nor any joint agent has any authority to make any representations about the property, and accordingly any information given is entirely without responsibility on the part of the agents, seller(s) or lessor(s). 2. Photos, Videos etc: The photographs, property videos and virtual viewings etc. show only certain parts of the property as they appeared at the time they were taken. Areas, measurements and distances given are approximate only. 3. Regulations etc: Any reference to alterations to, or use of, any part of the property does not mean that any necessary planning, building regulations or other consent has been obtained. A buyer or lessee must find out by inspection or in other ways that these matters have been properly dealt with and that all information is correct. 4. VAT: The VAT position relating to the property may change without notice. 5. To find out how we process Personal Data, please refer to our Group Privacy Statement and other notices at <https://www.knightfrank.com/legals/privacy-statement>.

Particulars dated July 2023. Photographs and videos dated July 2023.

Knight Frank is the trading name of Knight Frank LLP. Knight Frank LLP is a limited liability partnership registered in England and Wales with registered number OC305934. Our registered office is at 55 Baker Street, London W1U 8AN where you may look at a list of members' names. If we use the term 'partner' when referring to one of our representatives, that person will either be a member, employee, worker or consultant of Knight Frank LLP and not a partner in a partnership. If you do not want us to contact you further about our services then please contact us by either calling 020 3544 0692, email to [marketing.help@knightfrank.com](mailto:marketing.help@knightfrank.com) or post to our UK Residential Marketing Manager at our registered office (above) providing your name and address.