

Gloucester Terrace, Hyde Park W2



Gloucester Terrace, Hyde Park W2

Arranged over two levels of this period stucco fronted terrace in Bayswater, this impressive three bedroomed apartment benefits from a full refurbishment programme which delivers the highest specification throughout. The apartment is positioned on the second and third floors (with a lift).

Entered on the second floor the apartment comprises a generous reception room with ample space for dining and an impressive, separate bespoke kitchen that boasts integrated appliances and Calacatta porcelain worktops and splashbacks. There is also a guest W.C.



Guide price: £1,650,000

Tenure: Leasehold: approximately 94 years remaining

Service charge: £1,934 per annum, reviewed every year, next review due 2025

Ground rent: £10 per annum, fixed for the duration of the lease.

Local authority: City of Westminster

Council tax band: D







On the third floor there are three bedrooms, all of which have bespoke fitted wardrobes with the principal bedroom featuring a stunning en suite shower room. In addition there is a beautiful family bathroom.

Further benefits include Lutron smart lighting system throughout, natural herringbone oak wooden flooring, wifi controlled underfloor heating, Sonos audio system and bioethanol fuelled fireplace
Gloucester Terrace is located in the heart of Bayswater with the shops and restaurants of Queensway and Westbourne Grove nearby as well as the open spaces of Hyde Park. Transport links include Paddington Mainline, Elizabeth line, underground stations and Lancaster Gate (Central Line) underground station.




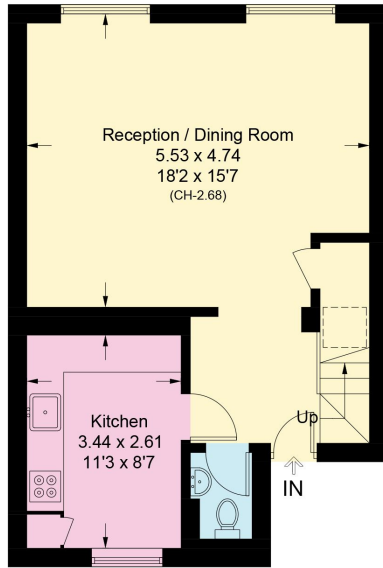
Gloucester Terrace, W2

Approximate Area = 92.1 sq m / 991 sq ft
 Loft Storage = 30.6 sq m / 330 sq ft
 Total = 122.7 sq m / 1321 sq ft
 Including Limited Use Area (0.5 sq m / 5 sq ft)



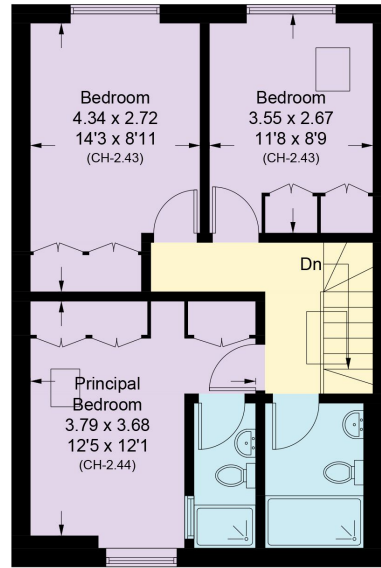
This plan is for guidance only and must not be relied upon as a statement of fact. Attention is drawn to the important notice on the last page of the text of the Particulars.

 = Reduce head height below 1.5m



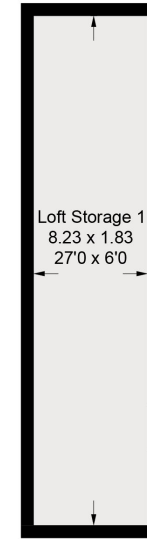
Second Floor

Approximate Area = 44.5 sq m / 479 sq ft
 Including Limited Use Area (0.5 sq m / 5 sq ft)



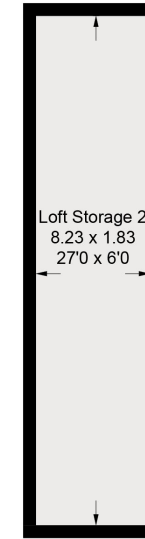
Third Floor

Approximate Area = 47.6 sq m / 512 sq ft



Loft Storage 1

Approximate Area = 15.3 sq m / 165 sq ft



Loft Storage 2

Approximate Area = 15.3 sq m / 165 sq ft

Knight Frank
Hyde Park
 1 Craven Terrace
 London
 W2 3QD
knightfrank.co.uk

I would be delighted to tell you more
Mark Ruffell
 020 3697 8234
mark.ruffell@knightfrank.com



Fixtures and fittings: A list of the fitted carpets, curtains, light fittings and other items fixed to the property which are included in the sale (or may be available by separate negotiation) will be provided by the Seller's Solicitors.

Important Notice: 1. Particulars: These particulars are not an offer or contract, nor part of one. You should not rely on statements by Knight Frank LLP in the particulars or by word of mouth or in writing ("information") as being factually accurate about the property, its condition or its value. Neither Knight Frank LLP nor any joint agent has any authority to make any representations about the property, and accordingly any information given is entirely without responsibility on the part of the agents, seller(s) or lessor(s). 2. Photos, Videos etc: The photographs, property videos and virtual viewings etc. show only certain parts of the property as they appeared at the time they were taken. Areas, measurements and distances given are approximate only. 3. Regulations etc: Any reference to alterations to, or use of, any part of the property does not mean that any necessary planning, building regulations or other consent has been obtained. A buyer or lessee must find out by inspection or in other ways that these matters have been properly dealt with and that all information is correct. 4. VAT: The VAT position relating to the property may change without notice. 5. To find out how we process Personal Data, please refer to our Group Privacy Statement and other notices at <https://www.knightfrank.com/legals/privacy-statement>.

Particulars dated August 2024. Photographs and videos dated August 2024.

Knight Frank is the trading name of Knight Frank LLP. Knight Frank LLP is a limited liability partnership registered in England and Wales with registered number OC305934. Our registered office is at 55 Baker Street, London W1U 8AN where you may look at a list of members' names. If we use the term 'partner' when referring to one of our representatives, that person will either be a member, employee, worker or consultant of Knight Frank LLP and not a partner in a partnership. If you do not want us to contact you further about our services then please contact us by either calling 020 3544 0692, email to marketing.help@knightfrank.com or post to our UK Residential Marketing Manager at our registered office (above) providing your name and address.