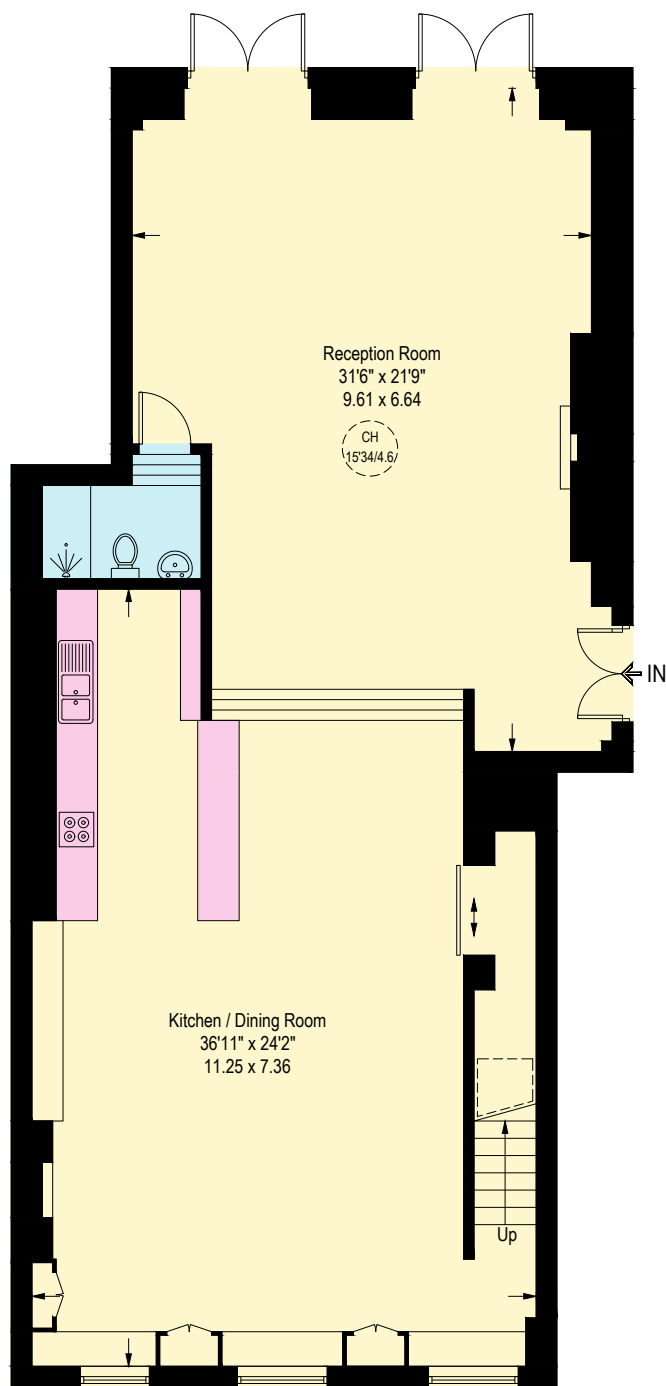


Amies Street, London, SW11

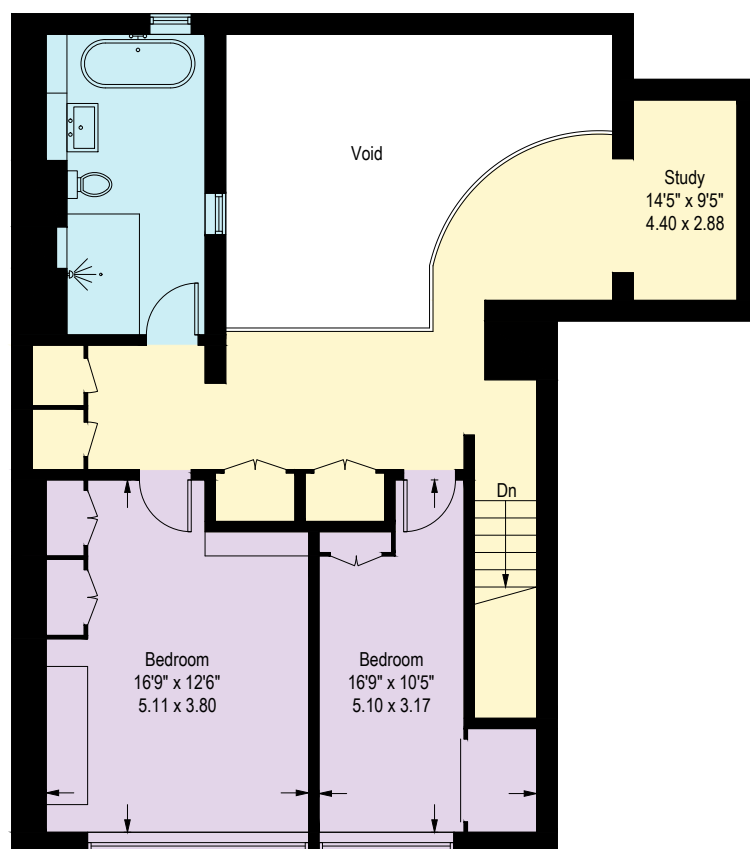
Approximate Gross Internal Area = 2280 sq ft / 211.8 sq m

Reduced Headroom = 7 sq ft / 0.7 sq m

Total = 2287 sq ft / 212.5 sq m
(Excluding Void)



Ground Floor



First Floor

Illustration for identification purposes only,
measurements are approximate, not to scale. (ID1184698)