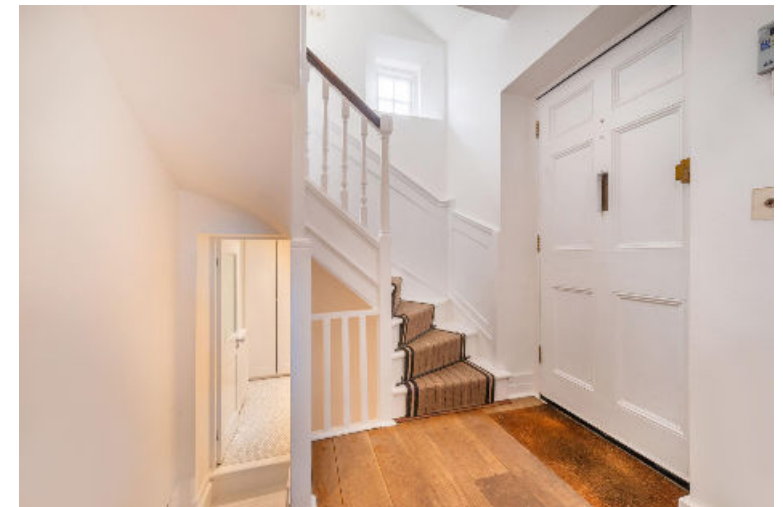


# Holly Mount, Hampstead NW3





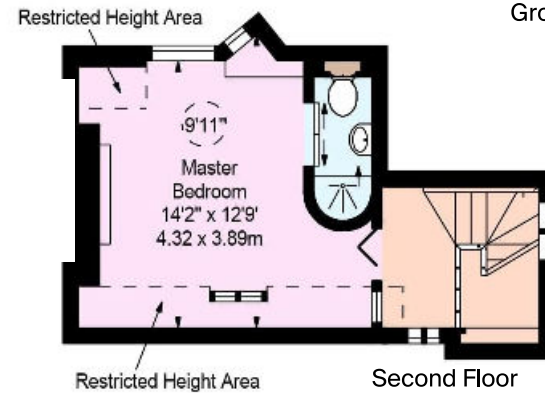
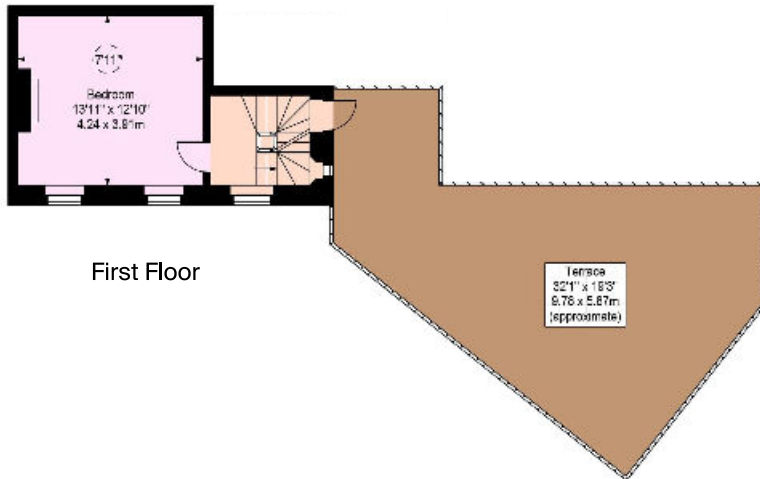
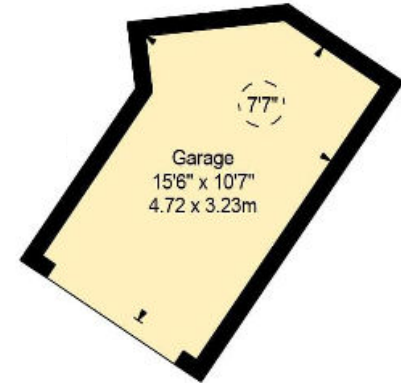
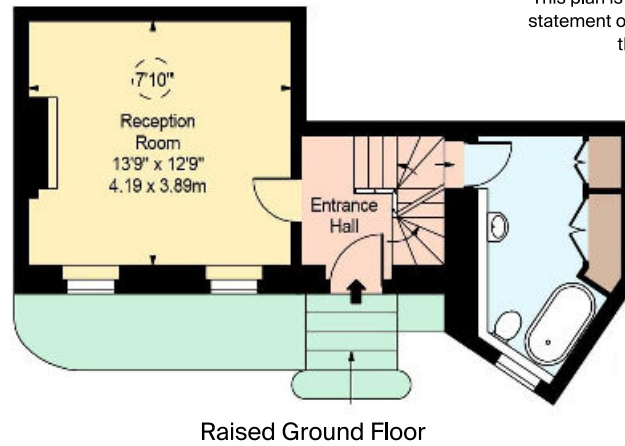
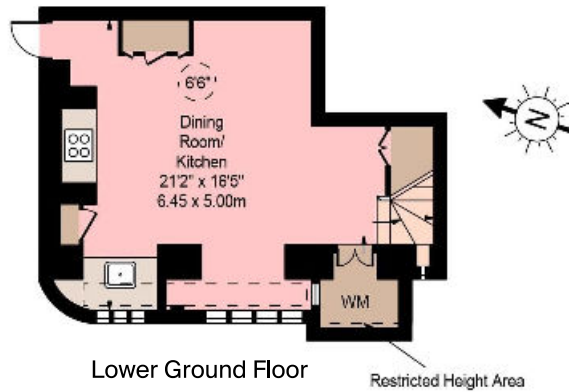
An iconic Georgian home set in the heart of Hampstead Village. This two bedroom, two reception room home retains the facade of the original detached house along with a wealth of period features. The house extends to approx. 1,100 sq ft across four floors and enjoys the most incredible views over the chimney pots of Hampstead to the skyline of London from the 620 sq ft roof terrace. This stunning home boasts impressive period features throughout, with a room per level; the lower ground floor accommodates the kitchen/ dining room, the reception room and family bathroom are on the raised ground floor and the first floor leads to the expansive roof terrace and first double bedroom. On the top floor of the house is the second double bedroom and en-suite bathroom. This charming house further benefits from a separate garage for one car.



*Located at the top of Holly Bush Steps, Holly Mount is one of Hampstead Villages' most iconic streets, set within moments on the amenities, cafe's and boutiques of Hampstead and a short walk from the open spaces of Hampstead Heath.*







**Approximate Gross Internal Floor Area**  
**99.03 sq m/ 1066 sq ft**

This plan is for guidance only and must not be relied upon as a statement of fact. Attention is drawn to the Important Notice on the last page of the text of the Particulars

Knight Frank  
 Hampstead  
 58-62 Heath Street  
 Hampstead NW3 1EN

**I would be delighted to tell you more.**

**Michael Hall**  
 020 7431 8686  
 michael.hall@knightfrank.com



[knightfrank.co.uk](https://www.knightfrank.co.uk)

**Connecting people & property, perfectly.**

Fixtures and fittings: A list of the fitted carpets, curtains, light fittings and other items fixed to the property which are included in the sale (or may be available by separate negotiation) will be provided by the Seller's Solicitors.

Important Notice 1. Particulars: These particulars are not an offer or contract, nor part of one. You should not rely on statements by Knight Frank LLP in the particulars or by word of mouth or in writing ("information") as being factually accurate about the property, its condition or its value. Neither Knight Frank LLP nor any joint agent has any authority to make any representations about the property, and accordingly any information given is entirely without responsibility on the part of the agents, seller(s) or lessor(s). 2. Photos etc: The photographs show only certain parts of the property as they appeared at the time they were taken. Areas, measurements and distances given are approximate only. 3. Regulations etc: Any reference to alterations to, or use of, any part of the property does not mean that any necessary planning, building regulations or other consent has been obtained. A buyer or lessee must find out by inspection or in other ways that these matters have been properly dealt with and that all information is correct. 4. VAT: The VAT position relating to the property may change without notice. 5. To find out how we process Personal Data, please refer to our Group Privacy Statement and other notices at <https://www.knightfrank.com/legals/privacy-statement>. Particulars dated February 2020 Photographs dated February 2020. Knight Frank is the trading name of Knight Frank LLP. Knight Frank LLP is a limited liability partnership registered in England and Wales with registered number OC305934. Our registered office is at 55 Baker Street, London W1U 8AN where you may look at a list of members' names. If we use the term 'partner' when referring to one of our representatives, that person will either be a member, employee, worker or consultant of Knight Frank LLP and not a partner in a partnership. If you do not want us to contact you further about our services then please contact us by either calling 020 3544 0692, email to [marketing.help@knightfrank.com](mailto:marketing.help@knightfrank.com) or post to our UK Residential Marketing Manager at our registered office (above) providing your name and address.

