



RESIDENCE
No. 15

ONE CARRINGTON

• MAYFAIR •

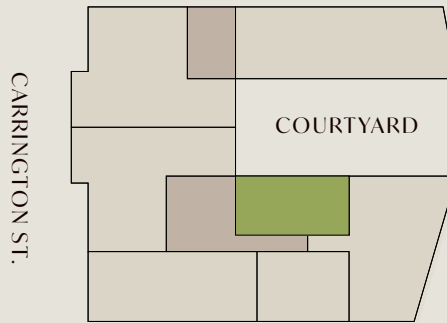
839 SQ FT
1 BEDROOM

LEVEL 2

RESIDENCE
No. 15

839 SQ FT 78 SQ M

1 BEDROOM 2 BATHROOMS



YARMOUTH PL.



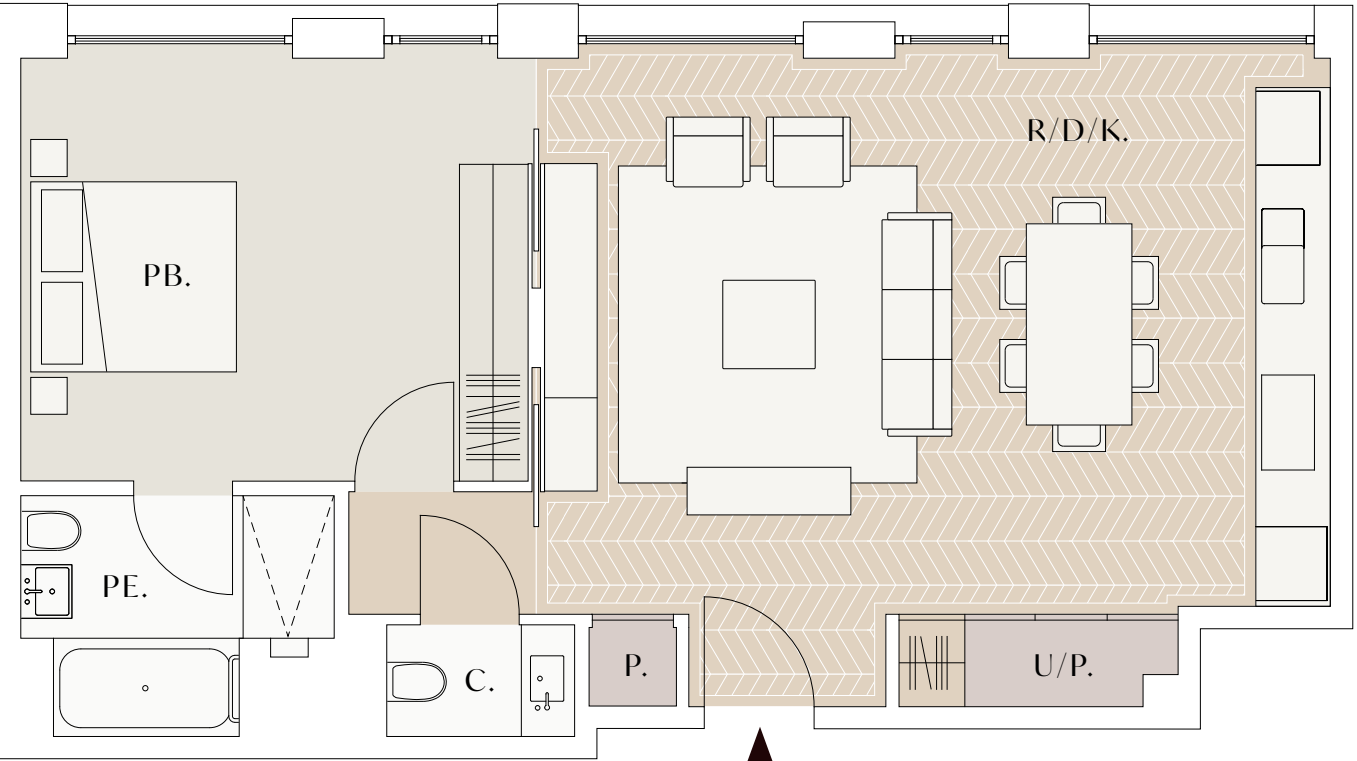
COURTYARD.

RESIDENTIAL DEVELOPMENT – NEW HOMES IMPORTANT NOTICE: 1. Particulars: these particulars are not an offer or contract nor part of one. You should not rely on statements by Knight Frank LLP in the particulars or by word of mouth or in writing as being factually accurate about the property, its condition or its value. Neither Knight Frank LLP nor any joint agent has any authority to make any representations about the property or development and accordingly any information given is entirely without responsibility on the part of the agents, sellers or lessors. 2. Images photographs and other information: Any computer generated images, plans, drawings, accommodation schedules, specification details or other information provided about the property ("information") are indicative only and not necessarily comprehensive. Any plans and drawings are not to scale. Any such information may change at any time and must not be relied upon as being factually accurate about the property. Any photographs are indicative of the quality and style of the development and location and do not represent the actual fittings and furnishings at this development. Knight Frank have not tested any services, equipment or facilities and purchasers must satisfy themselves by inspection or otherwise. 3. Regulations: Any reference to alterations to the property or use of any part of the development is not a statement that any necessary planning, building regulations or other consent has been obtained. These matters must be verified by any intending purchaser. Knight Frank LLP is a limited liability partnership registered in England with registered number OC305934. Our registered office is 55 Baker Street, London W1U 8AN, where you may look at a list of members' names. April 2025.

KEY

ROOM TYPE	ROOM DIMENSIONS	
	FT	M
R/D/K. Reception/Dining/Kitchen	24'6" x 17'3"	7.46 x 5.27
PB. Principal Bedroom	15'8" x 13'2"	4.77 x 4.01
PE. Principal En Suite		
C. Cloakroom		
U/P. Utility/Plant		
P. Plant		

COURTYARD



Entrance

OC



RESIDENCE No. 15

RESIDENCE FEATURES

- Double glazed windows with bronze powder coat finish
- Ceiling heights 2.725m to principal rooms (reception, dining, bedrooms)
- Very high acoustic specification with acoustic bearings between residences and basement level and acoustically treated party walls between apartments and to walls within apartments
- Full-height, solid wood entrance door with bespoke ironmongery in Carrington Bronze finish
- Feature wood flooring at entrances
- Engineered chevron wood flooring to reception rooms
- Hand-woven 100% pure wool salt colour carpet to bedrooms
- Bespoke built-in joinery for bedroom wardrobes and dressing areas

KITCHEN

- Bespoke kitchen design and installation by Design Space London
- Bianco Eclipsia leathered natural stone for splashback and island feature pieces
- Modulnova Frame Walnut Noche Milano (N03)
- 20mm Caeserstone Pure White for kitchen worktops
- Integrated Gaggenau appliances (includes induction hob, wine fridge, dishwasher, fridge, freezer, wine fridge, combination microwave oven, oven and warming drawer)
- Kitchen joinery
 - Tall unit and base unit fronts: Frame range Noce Milano
 - Wall shelf finish: Bianco Satin Matt Lacquer
 - Plinths: Noce Milano
 - Carcass material: Grey textured melamine
- Grohe brassware
- Modulnova bins
- Integrated, concealed lighting

UTILITY

- Miele combination washer dryers to apartments

PRINCIPAL BATHROOM

- Volakas stone to all walls vanity units and splash backs (Volakas Classic marble has a white background accented with veins of grey and swatches of pale burgundy)
- Elegant grey stone shower floor (elegant grey is a grey background with white veins)
- Bespoke stone vanity unit with joinery shelves and drawers, and feature lighting
- Fluted stone splashback (splashbacks are Bianco Eclipsia and is a white and grey quartzite with a marble and mottled effect running through it)
- Stone surround double ended bath
- MGS brassware in satin matte rose gold with knurling and thermostatic controllers
- Full height mirror joinery above vanity with metal and glass detail
- Integrated mood lighting
- Underfloor heating
- Separate WC and shower room
- Duravit Starck 3 wall mounted WC with soft close lid
- Thermosphere heated towel bars

EN SUITES

- Volakas stone (light grey) to all walls and vanity units, splash backs
- Elegant grey stone shower floor
- Bespoke stone shelf to wall mounted basin/WC
- Fluted stone splashback
- MGS brassware and thermostatic controllers
- Full height mirror joinery above vanity with metal and glass detail
- Integrated mood lighting
- Underfloor heating
- Shower room with feature glass door
- Duravit Starck 3 wall mounted WC
- Thermosphere heated towel bars

PRINCIPAL BEDROOM

- Bespoke wardrobes with timber veneer finish to match Noche Milano and integrated finger pull detail
- Integrated mood lighting

HEATING & COOLING

- Ceiling and/or wall located air conditioning throughout for comfort cooling
- Underfloor heating to all areas
- Individual zoning controls within each habitable space
- Leak detection system

LIGHTING & AUDIO VISUAL

- Lighting control for all rooms (Lutron Seetouch)
- Power provision for blinds by purchaser
- Fully integrated communications system to 24-hour concierge
- Fully future-proofed AV set up through a terminated cabling backbone built in to finished residences

SECURITY

- 24-hour monitored and staffed security in all communal areas
- Comelit video intercom system



CONTACT

FOR ALL ENQUIRIES

TOM RUNDALL
tom.rundall@knightfrank.com
+44 7876 034 851



PAUL FINCH
paul@beauchamp.com
+44 7785 725 033



A DEVELOPMENT BY  REUBEN BROTHERS